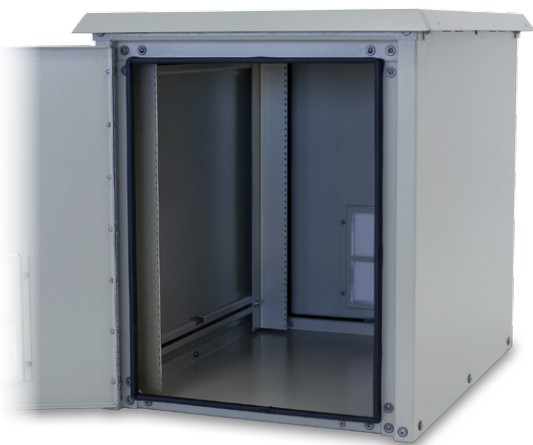


OD-30DDC

30" H x 34" D (15 RU*) Outdoor Enclosure



* Front and Rear sets of rails allow some equipment to rack both directions providing up to 30 RU

General

Weight

- 105 Lbs. assembled
- 155 Lbs. shipping weight

Doors

- 2, secured by three point locking system
- Locks via customer supplied padlocks
- Sealed with .875" aluminum filled gaskets

Material

- .125" Alumiflex®
- Finish: Painted cream
- RF properties: Non-ferrous

Vents

- 30 bottom louvers per door
- 12 top louvers – In top cover, under Alumishield®
- One removable filter panel per door
- 12 fixed filter pads in top cover

Handles

- Stainless steel, padlocking

Racking Specifications

Rails

- Two sets 19" rails standard (for additional rails see accessories)
- Alodine coated
- Holes tapped for 10-32 threads
- Each rail supported by two R-STRUTS™
- .125" Material (Alumiflex®)

Spacing

- 19" or 23" Racking available

Useable Height

- Usable racking height has been revised to only fit in the opening of the door jam which is cabinet height minus 4.25"
- Maximum: 26.75"
- Number of rack units per rail set: 15
- Total number RU's: Up to 30*

Useable Depth

- Maximum: 30.5" Minimum: 28.75"

Inside Clearance - Less Rails

Height

- 30.73"

Width

- 23.625"

Depth

- See racking specifications – Useable depth

Ratings

NEMA Class Types available

- NEMA 3R (Vented), NEMA 4 (closed loop-a/c) , NEMA 4X

Paint Tested

- 1000 Hour salt spray (textured)
- 1000 Hour immersion

Door Opening Clearance

Height

- 26.75"

Width

- 19.5"

Exterior Cabinet Dimensions

Main Body

- Height: 30.98"
- Width: 25.5"
- Depth: 34"

Alumishield®

- Hang down height: 1.75"
- Width: 28.46"
- Depth: 36.67"

Handles

- Protrude 1.875"

Total Space Occupied

- Height: 31.605"
- Width: 28.46"
- Depth: 37.75"

	*Section Starting & Ending Points	Vertical Height Per section	Effective Depth For Each Section
Top	26.75" – 30.98"	3.25"	30.50"
	26.57" – 26.75"	.18"	29.50"
	21.00" – 26.57"	5.57"	30.50"
Center	9.00" – 21.00"	12.00"	28.75"
	3.43" – 9.00"	5.57"	30.50"
	3.25" – 3.43"	.18"	29.50"
Bottom	0.00" – 3.25"	3.25"	30.50"