



DDB Unlimited, Inc.

SOD SERIES

SOD-372420



Best Warranty in the Industry

Why Choose the SOD Series?

The SOD series enclosure is the ultimate choice for your outdoor equipment racking applications when versatility is needed. Being constructed of our Alumiflex® material, you'll find it noticeably lighter than steel, yet strong enough to rack even the heaviest equipment. When choosing the SOD series, ease of installation along with pad, pole and wall mounting options provide endless possibilities for where you can locate. With many standard features including 3 point locking system, venting system with reusable filter and top solar shield; you will see the value quickly add up. Add to this a long list of available options including HVAC climate controls, electrical and cable entry solutions allows the SOD series to provide a flexibility of options that are second to none. All this with industry best lead times and competitive pricing as you have come to expect with DDB. The SOD series... a versatile, scalable design to meet a wide array of situations.



Application Types

Provides a secure, climate controlled environment for any electronic equipment.

- Telecommunications
- Wireless/Broadband
- DAS/BDA
- Fiber Optics
- Backhaul
- Base Station
- Small Cell
- Utility-Traffic
- Trailer-based Communications
- Wi-Fi
- Flexible and Scalable

Industry Standards

- NEMA 3R, 4 or 4X
- UL Listed (NEMA 3R configuration)

Base Cabinet Weight and Dimensions

Exterior Cabinet Dimensions

37"H x 24"W x 20"D

Approximate Weight

Raw 75 lbs. / Shipping 100 lbs.

Shipping dimensions

43"H x 32" x 32"
(ships on pallet)

Features

- Heavy duty outdoor construction with Front Access, Pad Mountable, and 0.125" Aluminum construction.
- 20 Rack Units (RU) - 19" (standard)
- SS External Hardware and Polypropylene filters
- UL Listed version available (contact sales for details)

2301 S. Hwy. 77 Pauls Valley, OK 73075

T: (800) 753-8459 • F: (877) 220-7236

sales@ddbunlimited.com

www.ddbunlimited.com



Made in America



Believing in American Craftsmanship



DDB Unlimited, Inc.

SOD SERIES

SOD-372420



Best Warranty in the Industry



Features

- 1. Solar Shield
- 2. EIA 19" Racking Rails
- 3. 20 Racking Units
- 4. Stainless Steel Door Hinge
- 5. Three Point Padlocking Handles
- 6. Painted Texture Cream
- 7. 1/2" Conduit Knockouts



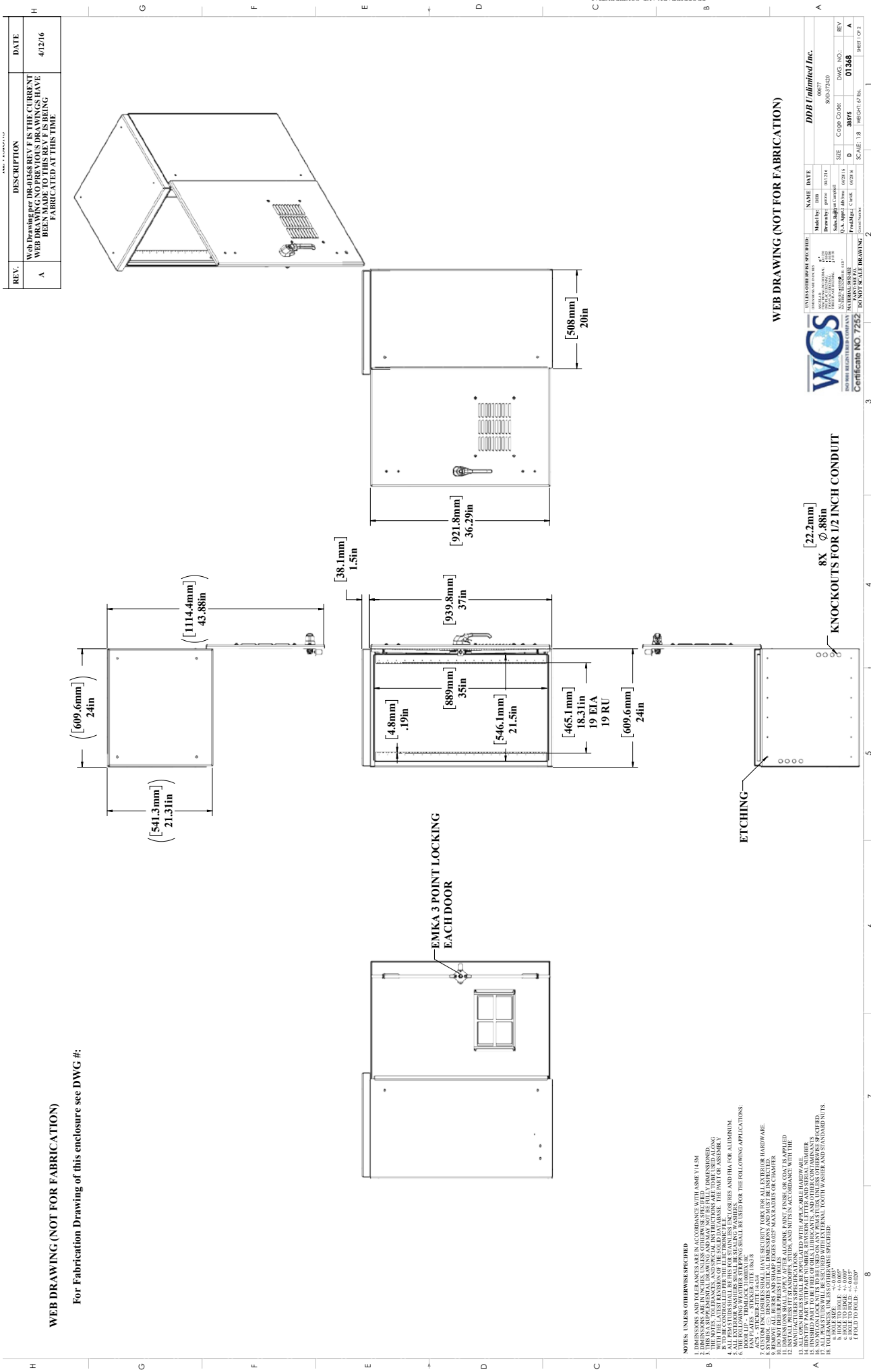
SOD SERIES

SOD-372420



WEB DRAWING (NOT FOR FABRICATION)

For Fabrication Drawing of this enclosure see DWG #:



- NOTES: UNLESS OTHERWISE SPECIFIED**
- DIMENSIONS AND TOLERANCES ARE IN ACCORDANCE WITH ASME Y14.5M
 - THIS IS A PRELIMINARY DRAWING AND MAY NOT BE FULLY DIMENSIONED.
 - THIS IS A PRELIMINARY DRAWING AND MAY NOT BE FULLY DIMENSIONED.
 - WITH THE LATEST REVISIONS OF THE SOLIDWORKS DATABASE, THE PART OR ASSEMBLY
 - ALL DIMENSIONS SHALL BE IN INCHES UNLESS OTHERWISE SPECIFIED.
 - ALL DIMENSIONS SHALL BE IN MILLIMETERS UNLESS OTHERWISE SPECIFIED.
 - THE FOLLOWING MATERIALS SHALL BE USED FOR THE FOLLOWING APPLICATIONS:
 PAN PLATES - STICKER-CLIP (18x8)
 PAN PLATES - STICKER-CLIP (18x8)
 PAN PLATES - STICKER-CLIP (18x8)
 - CUSTOM ENCLOSURES SHALL HAVE SECURITY FOR ALL EXTERIOR HARDWARE.
 - REMOVE ALL BURS AND SHARP EDGES 0625 MARK ADDRESS OR HAMMER
 - REMOVE ALL BURS AND SHARP EDGES 0625 MARK ADDRESS OR HAMMER
 - DIMENSIONS SHALL APPLY AFTER ALUMINE PAINT, FINISH, OR COAT IS APPLIED
 - DIMENSIONS SHALL APPLY AFTER ALUMINE PAINT, FINISH, OR COAT IS APPLIED
 - MANUFACTURER'S SPECIFICATIONS, DIMS, AND TOLNS IN ACCORDANCE WITH THE
 - MANUFACTURER'S SPECIFICATIONS, DIMS, AND TOLNS IN ACCORDANCE WITH THE
 - IDENTIFY PART WITH PART NUMBER, REVISION LETTER AND SERIAL NUMBER.
 - NO DIMENSIONS SHALL BE USED IN ANY DIMENSIONS UNLESS OTHERWISE SPECIFIED.
 - NO DIMENSIONS SHALL BE USED IN ANY DIMENSIONS UNLESS OTHERWISE SPECIFIED.
 - TOLERANCES, UNLESS OTHERWISE SPECIFIED:
 8. HOLE TO HOLE: $\pm .000$ "
 9. HOLE TO HOLE: $\pm .000$ "
 10. HOLE TO HOLE: $\pm .000$ "
 11. HOLE TO HOLE: $\pm .000$ "

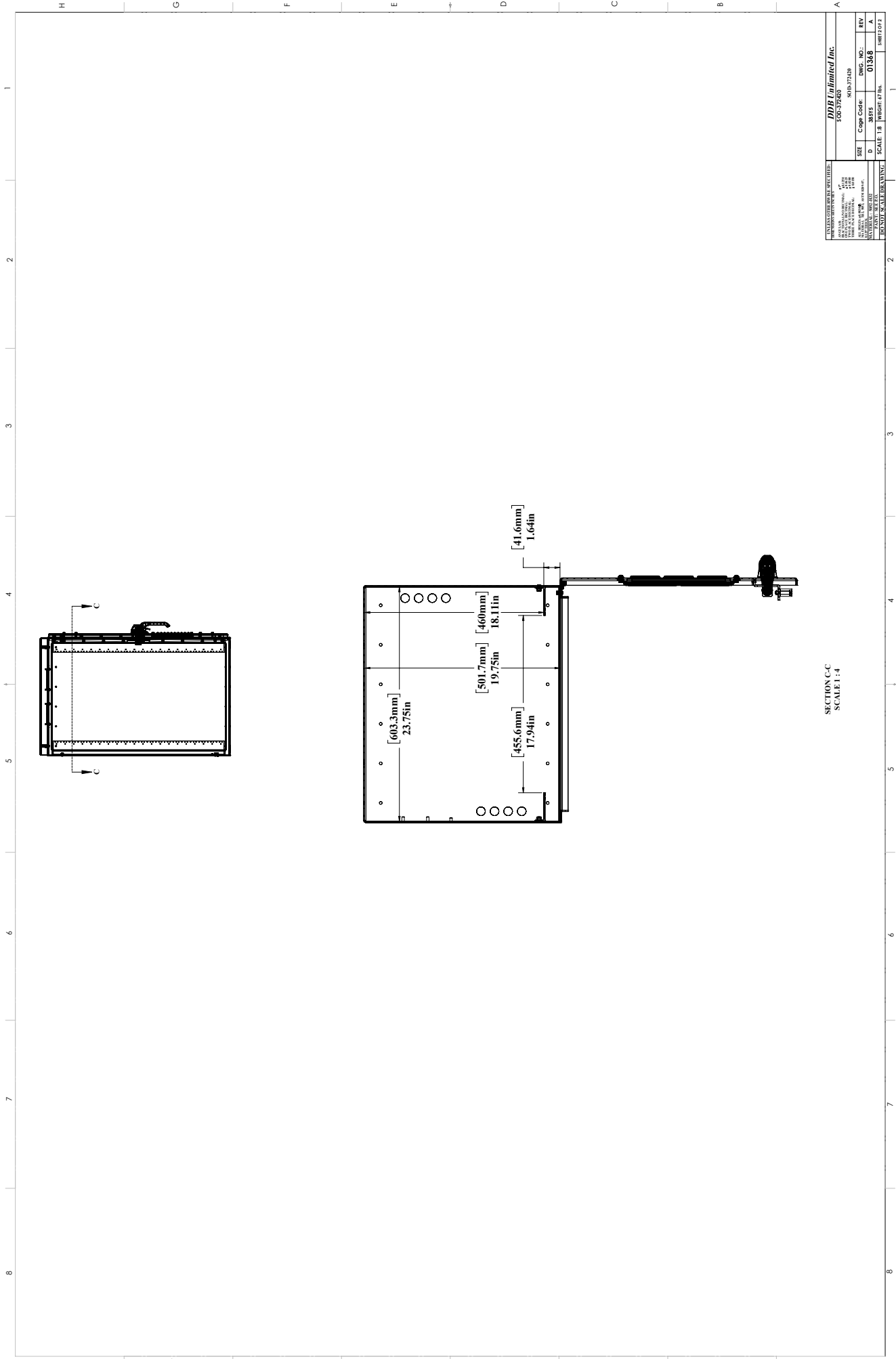
WEB DRAWING (NOT FOR FABRICATION)



KNOCKOUTS FOR 1/2 INCH CONDUIT
 [22.2mm] 8X Ø.38in

REV.	DESCRIPTION	DATE
A	Web Drawing per DR-01368 REV F IS THE CURRENT WEB DRAWING. NO PREVIOUS DRAWINGS HAVE BEEN FABRICATED AT THIS TIME.	4/02/16

SOD SERIES SOD-372420



SECTION C-C
SCALE 1:4

DDB UNLIMITED INC. 150-372420		SHEET NO. 01284	DWG. NO. 01284	REV. A
USE 80%	CORR. CODE 0	DATE 12/08/15	SCALE 1:8	SHEET NO. 1

PROPRIETARY AND CONFIDENTIAL
 REPRODUCTION IN PART OR AS A WHOLE WITHOUT THE WRITTEN PERMISSION OF DDB UNLIMITED, INC. IS PROHIBITED.