

WOD-16DDC

16.98" H 29.5" W x 34" D (7 RU) Outdoor Enclosure

110



General

*Approximate Weight

- 89 Lbs. assembled
- 159 Lbs. shipping weight

Doors

- 2, Secured by three point locking system
- Locks via customer supplied padlocks
- Sealed with .375" aluminum filled gaskets
- EMKA Wind Lock on Each Door

Material

- .125" Alumiflex®
- Finish: Painted cream
- RF properties: Non-ferrous

Vents

- 30 louvers per door
- 16 top louvers – In top cover, under Alumishield®
- One removable filter panel per door
- 16 fixed filter pads in top cover

Handles

- Zinc Die Powder-coated Black EMKA Three Point Padlocking Handles

Racking Specifications

Rails

- 2 Sets of 19" or 23" Reversible Racking Rails w/RU Markings and Pass-through Holes
- Alodine coated
- Holes tapped for 10-32 threads
- Each rail supported by two R-STRUTS™
- .125" Material (Alumiflex®)

Spacing

- 19" - 23" standard

Inside Clearance - Less Rails

- Height: 16.73"
- Width: 27.625"
- Depth: 27.75"

Ratings

NEMA Class Types available

- NEMA 3R (Vented), NEMA 4 (closed loop-a/c) , NEMA 4X

Paint Tested

- 1000 Hour salt spray (textured)
- 1000 Hour immersion

Door Opening Clearance

- Height: 12.75"
- Width: 23.5"

Exterior Cabinet Dimensions

Main Body

- Height: 16.98"
- Width: 29.5"
- Depth: 34"

Alumishield®

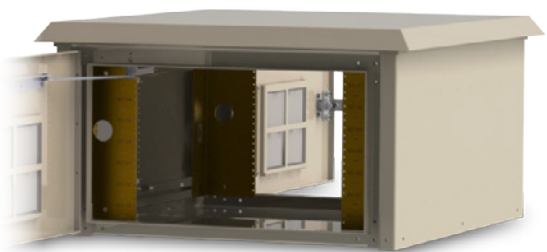
- Hang down height: 1.71"
- Width: 32.46"
- Depth: 36.67"

Handles

- Protrude 2.2"

Total Space Occupied

- Height: 17.605"
- Width: 32.46"
- Depth: 38.4"



Pictures shown are examples only.
See details for specifications.