



DDB Unlimited, Inc. CONVERSION COLLAR



Best Warranty in the Industry



Why Choose the Conversion Collar?

The DDB adapter collars provide a cost-effective solution to upgrading or replacing of your existing HVAC unit. Designed as a direct replacement for many infield units, the DDB retrofit plenums offer a simple infield retrofit of existing enclosures.

With the purchase of any new N28 or N36 series HVAC unit, DDB will include the conversion kit at no additional charge.

Call to speak to your account representative for details and sizing options and how to get your no charge conversion kit.

Features

1. Conversion collar to Pentair air conditioners
2. In field retrofit

Industry Standards

- NEMA 4

AC Plenums Weight and Dimensions Only

Exterior Conversion Collar (ACP-PLIQ4000N28)

30"H x 12.5"W x 1.5"D

Approximate Weight

Raw 6 lbs. / Shipping 10 lbs.

Shipping Dimensions

36"H x 15" W x 4"D

Exterior Conversion Collar (ACP-PLIQ6000N36)

36.75"H x 16"W x 1.5"D

Approximate Weight

Raw 8 lbs. / Shipping 19 lbs.

Shipping Dimensions

42"H x 21" W x 6"D

Exterior Conversion Collar (ACP-PLIQ8000N36)

42.625"H x 16"W x 1.5"D

Approximate Weight

Raw 11 lbs. / Shipping 20 lbs.

Shipping Dimensions

47"H x 21" W x 6"D

2301 S. Hwy. 77 Pauls Valley, OK 73075
T: (800) 753-8459 • F: (877) 220-7236
sales@ddbunlimited.com
www.ddbunlimited.com

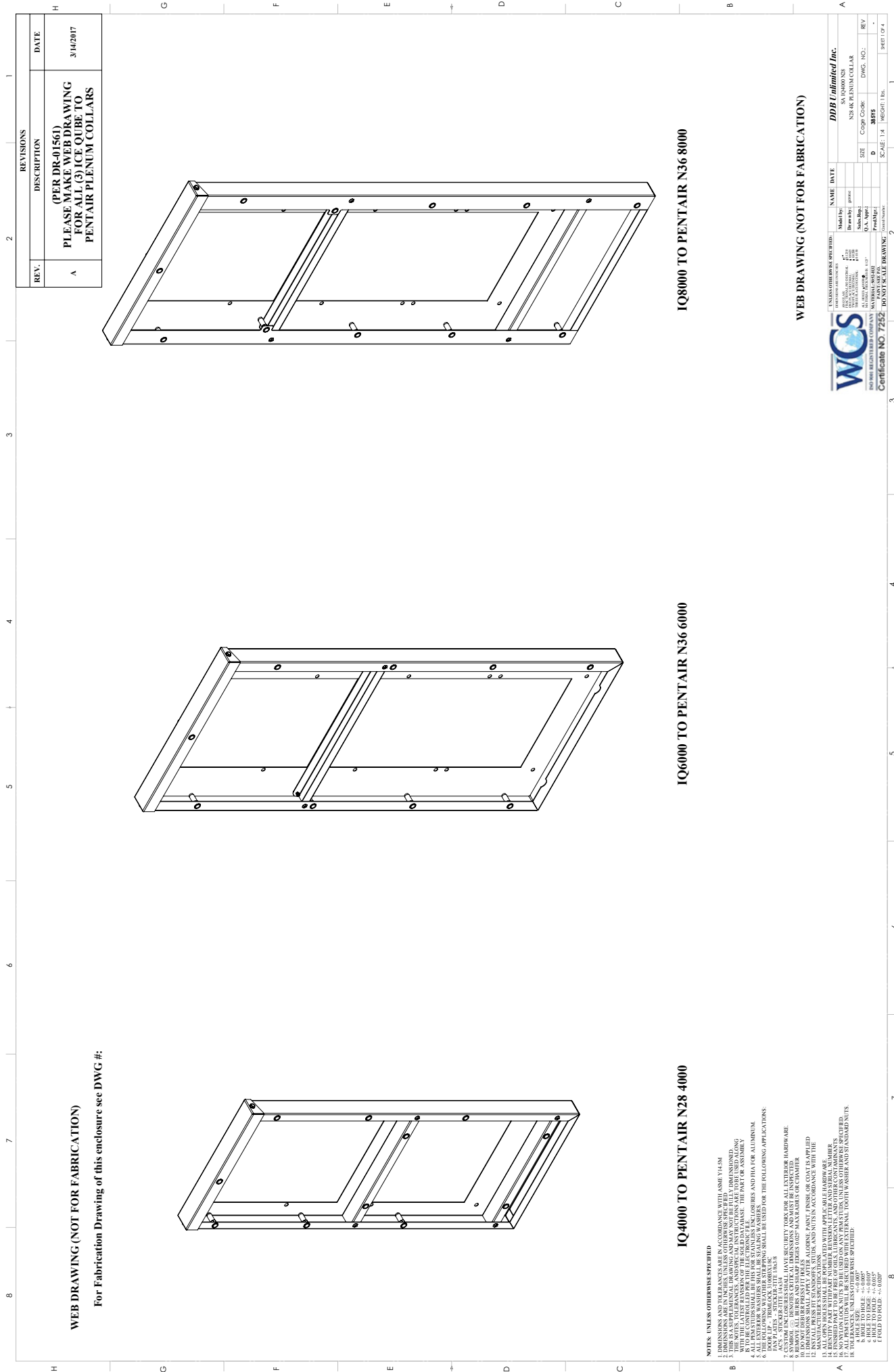


CONVERSION COLLAR



WEB DRAWING (NOT FOR FABRICATION)

For Fabrication Drawing of this enclosure see DWG #:



REV.	REVISIONS	DATE
A	PLEASE MAKE WEB DRAWING FOR ALL (3) ICE QUBE TO PENTAIR PLENUM COLLARS (PER DR-01561)	3/14/2017

IQ4000 TO PENTAIR N28 4000

IQ6000 TO PENTAIR N36 6000

IQ8000 TO PENTAIR N36 8000

- NOTES, UNLESS OTHERWISE SPECIFIED:**
1. DIMENSIONS AND TOLERANCES ARE IN ACCORDANCE WITH ASME Y14.5M.
 2. DIMENSIONS ARE IN UNITS, UNLESS OTHERWISE SPECIFIED. DIMENSIONS IN PARENTHESES ARE FOR REFERENCE ONLY.
 3. ALL DIMENSIONS ARE TO UNLESS OTHERWISE SPECIFIED.
 4. DIMENSIONS ARE TO UNLESS OTHERWISE SPECIFIED.
 5. DIMENSIONS ARE TO UNLESS OTHERWISE SPECIFIED.
 6. DIMENSIONS ARE TO UNLESS OTHERWISE SPECIFIED.
 7. DIMENSIONS ARE TO UNLESS OTHERWISE SPECIFIED.
 8. DIMENSIONS ARE TO UNLESS OTHERWISE SPECIFIED.
 9. DIMENSIONS ARE TO UNLESS OTHERWISE SPECIFIED.
 10. DIMENSIONS ARE TO UNLESS OTHERWISE SPECIFIED.
 11. DIMENSIONS ARE TO UNLESS OTHERWISE SPECIFIED.
 12. DIMENSIONS ARE TO UNLESS OTHERWISE SPECIFIED.
 13. DIMENSIONS ARE TO UNLESS OTHERWISE SPECIFIED.
 14. DIMENSIONS ARE TO UNLESS OTHERWISE SPECIFIED.
 15. DIMENSIONS ARE TO UNLESS OTHERWISE SPECIFIED.
 16. DIMENSIONS ARE TO UNLESS OTHERWISE SPECIFIED.
 17. DIMENSIONS ARE TO UNLESS OTHERWISE SPECIFIED.
 18. DIMENSIONS ARE TO UNLESS OTHERWISE SPECIFIED.
 19. DIMENSIONS ARE TO UNLESS OTHERWISE SPECIFIED.
 20. DIMENSIONS ARE TO UNLESS OTHERWISE SPECIFIED.

WEB DRAWING (NOT FOR FABRICATION)

WCS
 WOODS CHRISTENSEN CONSULTANTS
 Certificate NO. 7232 - BOARD SCALE DRAWING: 2

DDP Unlimited Inc.
 50 LINDEN ST
 NEW BRITAIN, CT 06053
 (860) 441-1111
 www.ddp.com

NAME: [] DATE: []
 TITLE: []
 O.A. Appr: []
 PROJECT: []
 SCALE: 1/4" = 1'-0"

DATE: []
 DWG. NO.: []
 REV: []