



An ISO 9001
Certified company

WOD Series

WOD-16DXC



Why Choose WOD the Series?

The WOD series of enclosures are the ultimate choice for your outdoor racking requirements. Being made of our own rugged Alumiflex®, you'll find it noticeably lighter than steel, yet strong enough to rack even the heaviest equipment. When choosing the WOD series, you have handpicked the highest value in American construction. The WOD-16DXC includes the standard features you have come to expect with DDB, incorporating the versatile strut system for adjustable racking, the security of a 3-point locking system and our patented Alumishield® solar cap to manage heat loads. For those who need more than just our standard enclosure, DDB can also make a truly customized solution with our many available options including HVAC, providing a climate-controlled environment for any electronic equipment, electrical load panels and cable entry solutions to name a few. All of this comes together to create an enclosure able to meet all of the unique needs your customers have been seeking. DDB offers a state-of-the-art design, a competitive price, benchmark lead times and a guaranteed delivery, all backed up with an industry leading 15-year warranty on every enclosure. Put DDB's substantial stock to work for you today. Contact our professional staff to assist you with your made-to-order solution.



Features

- 0.125" Aluminum Construction
- Stainless Steel External Hardware/Hinge
- 3 Point Lock System
- Heavy Duty Out-Door Construction
- Front and Rear Access
- Custom Colors Available
- Cream & Red Powder-Coat in Stock
- Flexible and Scalable
- 15 Year Warranty
- Quick Shipping

Application Types

- Telecommunications
- Wireless/Broadband
- Fiber Optics
- Back Haul
- Small Cell/DAS
- Public Safety
- Utility
- Base Station
- Military
- Trailer-Based Communications
- Wi-Fi
- LTEE/4G/5G



Industry Standards:

- NEMA 3R as shown
- NEMA 4 and 4X configurable (unlisted to environmental rating)
- WOD Series Listed to UL 50/50E Type 4 Available**
- ETL listed to UL Standard 60950-1/CSA 22.2C

2301 S. HWY 77 Pauls Valley, OK 73075

T: (800) 753-8459 – F: (877) 220-7236

sales@ddbunlimited.com www.ddbunlimited.com

Weight and Dimensions

Approximate Exterior Enclosure Dimensions:

18"H x 32"W x 30"D

Shipping Dimensions:

42"W x 40"L - Palletized

Approximate Shipping Weight:

114 lbs.

WOD Series

WOD-16DXC

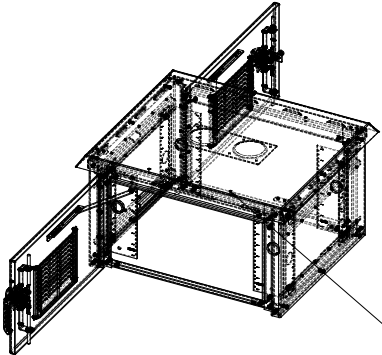
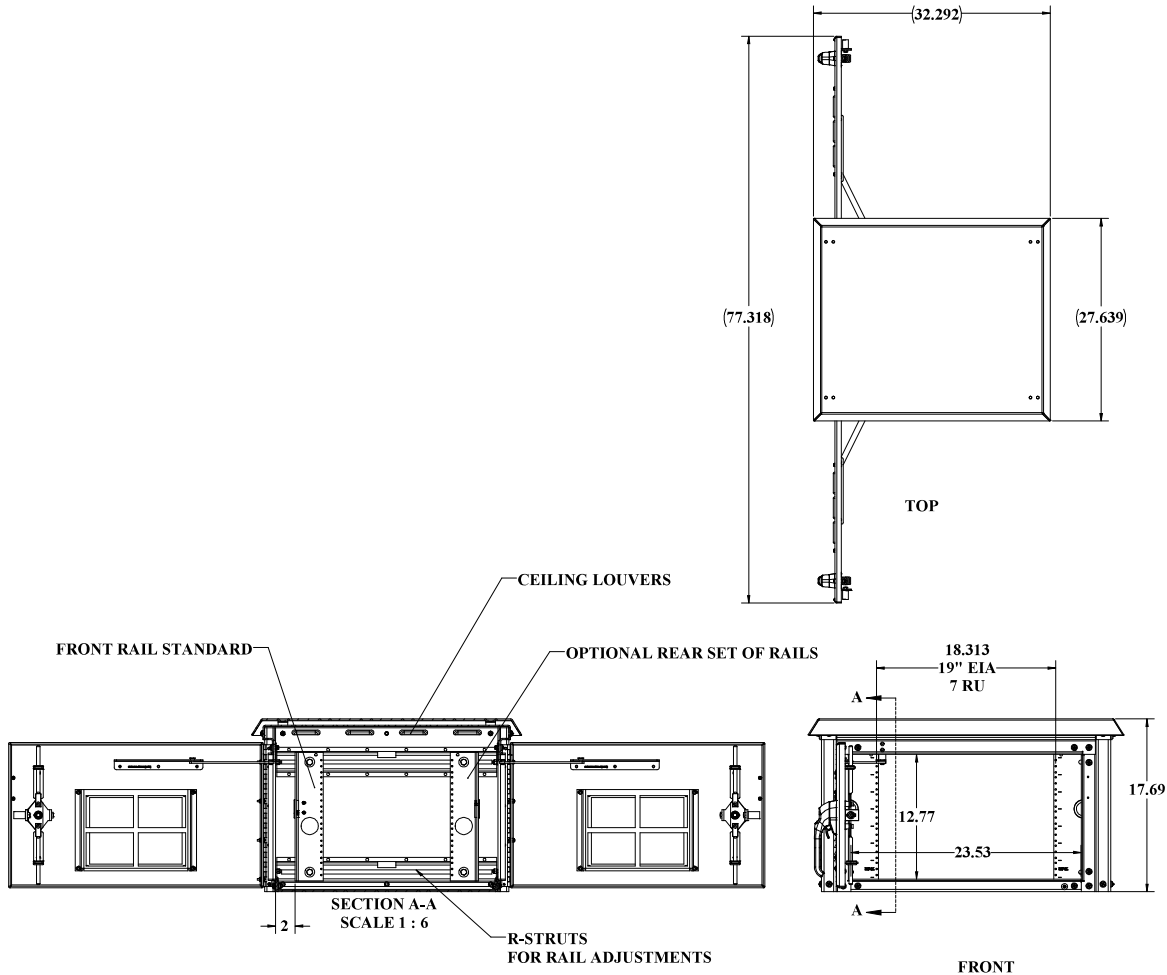


Features

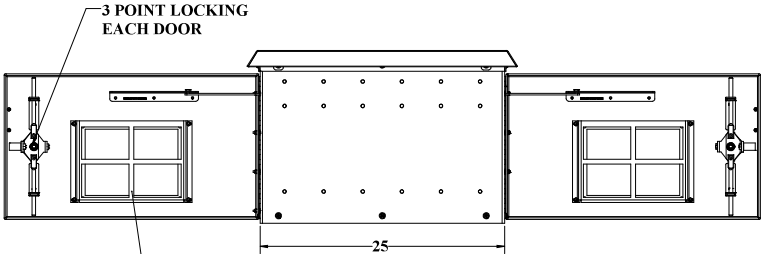
1. Solar Shield (Alumishield)
2. 19" and 23" Reversible Racking Rails
3. Rear Access Door
4. Stainless Steel Door Hinge
5. 3 Point Locking System
6. Powder-Coat Cream
7. Reusable Vent Filters
8. Automatic Wind-Lock

WEB DRAWING (NOT FOR FABRICATION)

REVISIONS		
REV.	DESCRIPTION	DATE
A	Initial Web Drawing per DR-00134	6/10/2013
B	revise to incorporate new components and new drawing template pdr DR-00904	5/12/2014
C	UPDATED FORMAT PER DR-01937	3/12/2019



STANDOFFS STANDARD FOR OPTIONAL LIGHTING OVER EACH DOOR FRON AND REAR



RIGHT SIDE

WEB DRAWING (NOT FOR FABRICATION)

UNLESS OTHERWISE SPECIFIED:		NAME	DATE	DDB Unlimited Inc.		
DESCRIPTION AND QUANTITY		Model No.	0006	03/12/19	WOD-XXXX	
PARTS LIST		Drawn by:	James	03/12/19	WOD-10TH.DX	
QUANTITY		Sales Rep:	Boys C	06/25/13		
MATERIALS		Q.A. Appr:	John H	04/15/19	SITE	
FINISHES		Prod. Mgr:	Chris	04/15/19	D	
DO NOT SCALE DRAWING		Checked by:			SCALE: 1:8	
					WEIGHT: 83 lbs.	
					SHEET 1 OF 3	

WEB DRAWING (NOT FOR FABRICATION)

4X $\phi \frac{9}{16}$ "
ETCHINGS

$\phi 26$
FLOOR ETCHINGS

20.75

18.75
RAIL FACE
TO RAIL FACE

$\phi 19\frac{1}{2}$ "
FLOOR
ETCHINGS

29 $\frac{3}{4}$ "

27 $\frac{3}{4}$ "
R-STRUT
TO R-STRUT

(2.27)

TOP VIEW
CEILING AND ALUMASHIELD NOT SHOWN

WEB DRAWING (NOT FOR FABRICATION)

DDB Unlimited Inc.			
WOD-00000			
Enduser, Family, WOD			
NAME	DATE	SIZE	Close Code
Model by: WOD	06/10/04	D	00134
Drawn by: WOD	06/10/04	D	00134
Salva Rep: WOD	06/10/04	D	00134
Q.A. Appr: WOD	06/10/04	D	00134
Prod. Mgr: WOD	06/10/04	D	00134
SCALE: 1:1 WOD			

File Location: (DDB)EPDM Vault
C:\DDB\Drawing Request\Customers\WOD WEB DWG\WOD Family WEB\WOD-00134 (WOD-140X WEB)

PROPRIETARY AND CONFIDENTIAL
THE INFORMATION CONTAINED IN THIS DRAWING IS THE SOLE PROPERTY OF DDB Unlimited, INC. ANY
REPRODUCTION IN PART OR AS A WHOLE WITHOUT THE WRITTEN PERMISSION OF DDB Unlimited, INC. IS PROHIBITED.

