



An ISO 9001  
Certified company

# OD Series

## OD-62DXC



### Why Choose OD the Series?

The OD series of enclosures are the ultimate choice for your outdoor racking requirements. Being made of our own rugged Alumiflex®, you'll find it noticeably lighter than steel, yet strong enough to rack even the heaviest equipment. When choosing the OD series, you have handpicked the highest value in American construction. The OD-62DXC includes the standard features you have come to expect with DDB, incorporating the versatile strut system for adjustable racking, the security of a 3-point locking system and our patented Alumishield® solar cap to manage heat loads. For those who need more than just our standard enclosure, DDB can also make a truly customized solution with our many available options including HVAC, providing a climate-controlled environment for any electronic equipment, electrical load panels and cable entry solutions to name a few. All of this comes together to create an enclosure able to meet all of the unique needs your customers have been seeking. DDB offers a state-of-the-art design, a competitive price, benchmark lead times and a guaranteed delivery, all backed up with an industry leading 15-year warranty on every enclosure. Put DDB's substantial stock to work for you today. Contact our professional staff to assist you with your made-to-order solution.



### Features

- 0.125" Aluminum Construction
- Stainless Steel External Hardware/Hinge
- 3 Point Lock System
- Heavy Duty Out-Door Construction
- Front and Rear Access
- Custom Colors Available
- Cream and Red Powder-Coat in Stock
- Flexible and Scalable
- 15 Year Warranty
- Quick Shipping

### Application Types

- Telecommunications
- Wireless/Broadband
- Fiber Optics
- Back Haul
- Small Cell/DAS
- Public Safety
- Utility
- Base Station
- Military
- Trailer-Based Communications
- Wi-Fi
- LTEE/4G/5G



### Industry Standards:

- NEMA 3R as shown
- NEMA 4 and 4X configurable (unlisted to environmental rating)
- OD Series Listed to UL 50/50E Type 4 Available**
- ETL Certified to UL Standard 60950/1CSA 22.2C

2301 S. HWY 77 Pauls Valley, OK 73075

T: (800) 753-8459 – F: (877) 220-7236

[sales@ddbunlimited.com](mailto:sales@ddbunlimited.com) [www.ddbunlimited.com](http://www.ddbunlimited.com)

### Weight and Dimensions

Approximate Exterior Enclosure Dimensions:

63"H x 28"W x 30"D

Shipping Dimensions:

32"W x 42"L - Palletized

Approximate Shipping Weight:

176 lbs.

# OD Series

## OD-62DXC

Made in America



Believing in American  
Craftsmanship



### Features

1. Solar Shield (Alumishield)
2. 19" Adjustable Racking Rails
3. Rear Access Door
4. Stainless Steel Door Hinge
5. 3 Point Locking System
6. Powder-Coat Cream
7. Reusable Vent Filters

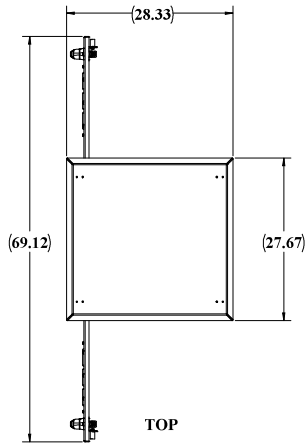
2301 S. HWY 77 Pauls Valley, OK 73075

T: (800) 753-8459 – F: (877) 220-7236

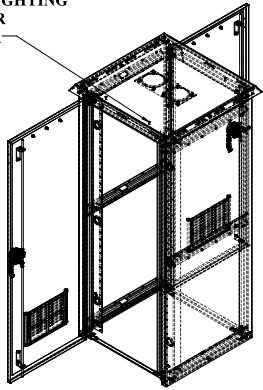
[sales@ddbunlimited.com](mailto:sales@ddbunlimited.com) [www.ddbunlimited.com](http://www.ddbunlimited.com)

WEB DRAWING (NOT FOR FABRICATION)

REVISIONS		
REV.	DESCRIPTION	DATE
A	Web Drawing per DR-00425	11/15/2011
B	Add new components and DWG template to WEB DWG per DR-00923	5/12/2014
C	UPDATED DRAWING FORMAT PER DR-01945	5/23/2019

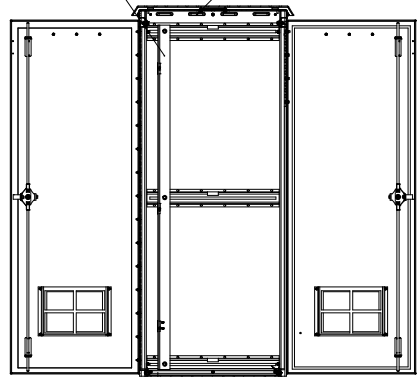


STANDOFFS STANDARD  
FOR OPTIONAL LIGHTING  
OVER EACH DOOR  
FRONT AND REAR



FRONT RAIL STANDARD

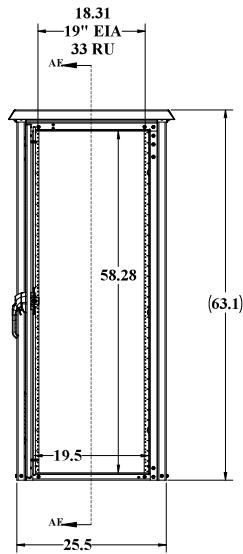
CEILING LOUVERS



2

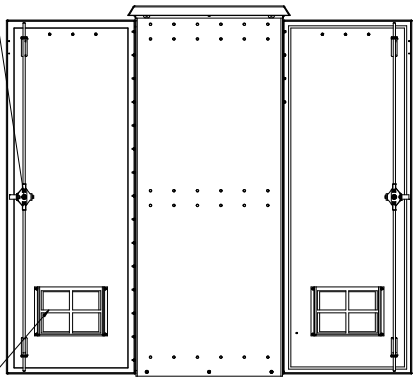
SECTION AE-AE  
SCALE 1 : 10

3 R-STRUTS  
FOR RAIL ADJUSTMENTS



3 POINT LOCKING

FILTERED VENTS

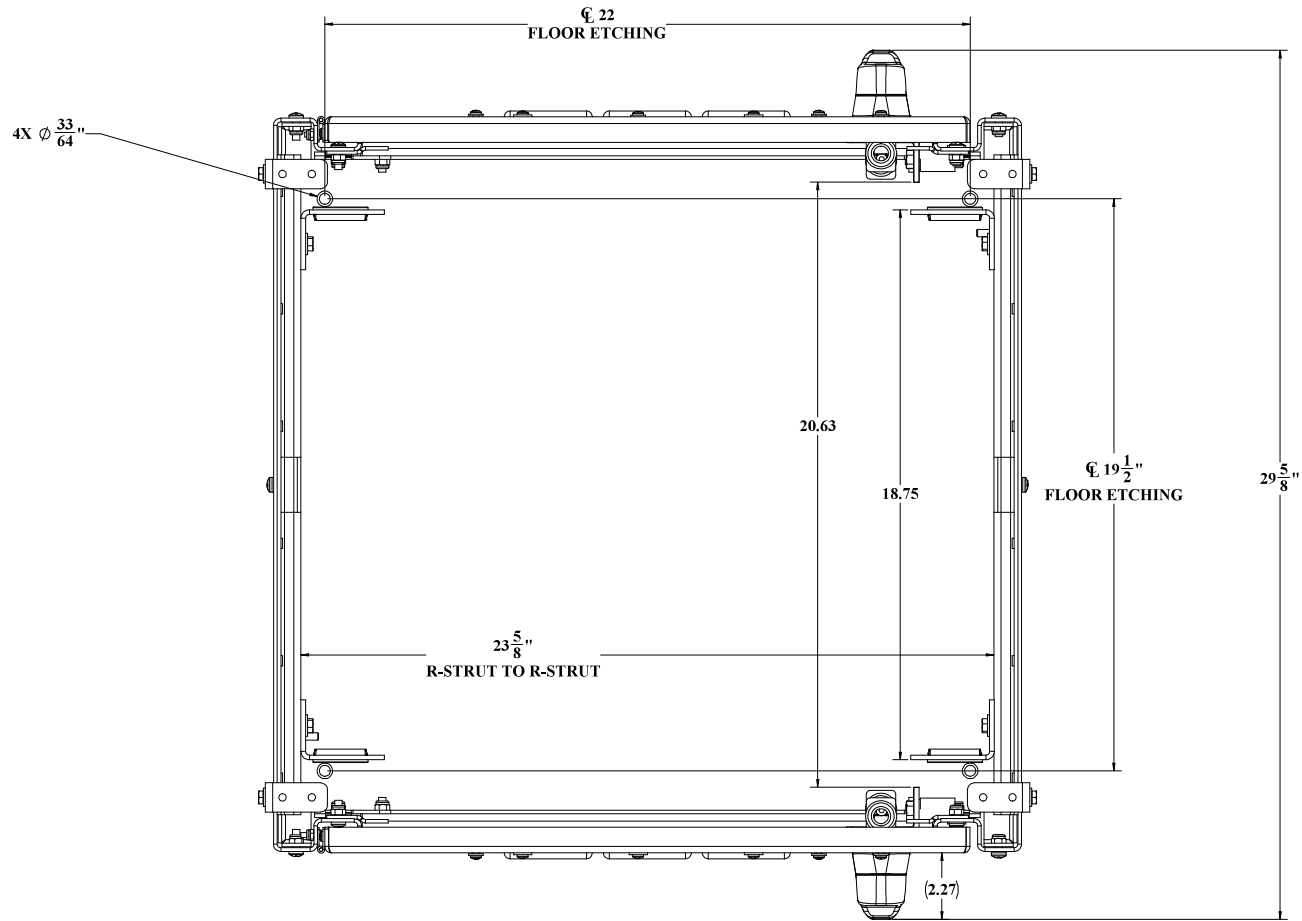


RIGHT SIDE

WEB DRAWING (NOT FOR FABRICATION)


UNLESS OTHERWISE SPECIFIED:		NAME	DATE	DDB Unlimited Inc.			
DIMENSIONS ARE IN INCHES		Model by:	11/15/2011	OD Family Endnotes			
PARTICULARS		Drawn by:	11/15/2011	Enclosure, OD, 62, DX			
DRAWING STANDARDS		Sales Rep:	11/15/2011	SITE			
DRAWING STANDARDS		Q.A. Appr:	11/15/2011	Cage Code:			
DRAWING STANDARDS		Prod. Mgr:	11/15/2011	DWG. NO.:			
DRAWING STANDARDS				REV			
DRAWING STANDARDS				00429			
DRAWING STANDARDS				C			
DRAWING STANDARDS				SCALE: 1:32 WEIGHT: 140 lbs.			
DRAWING STANDARDS				SHEET 1 OF 3			

**WEB DRAWING (NOT FOR FABRICATION)**



**TOP VIEW**  
**CEILING AND ALUMASHIELD NOT SHOWN**

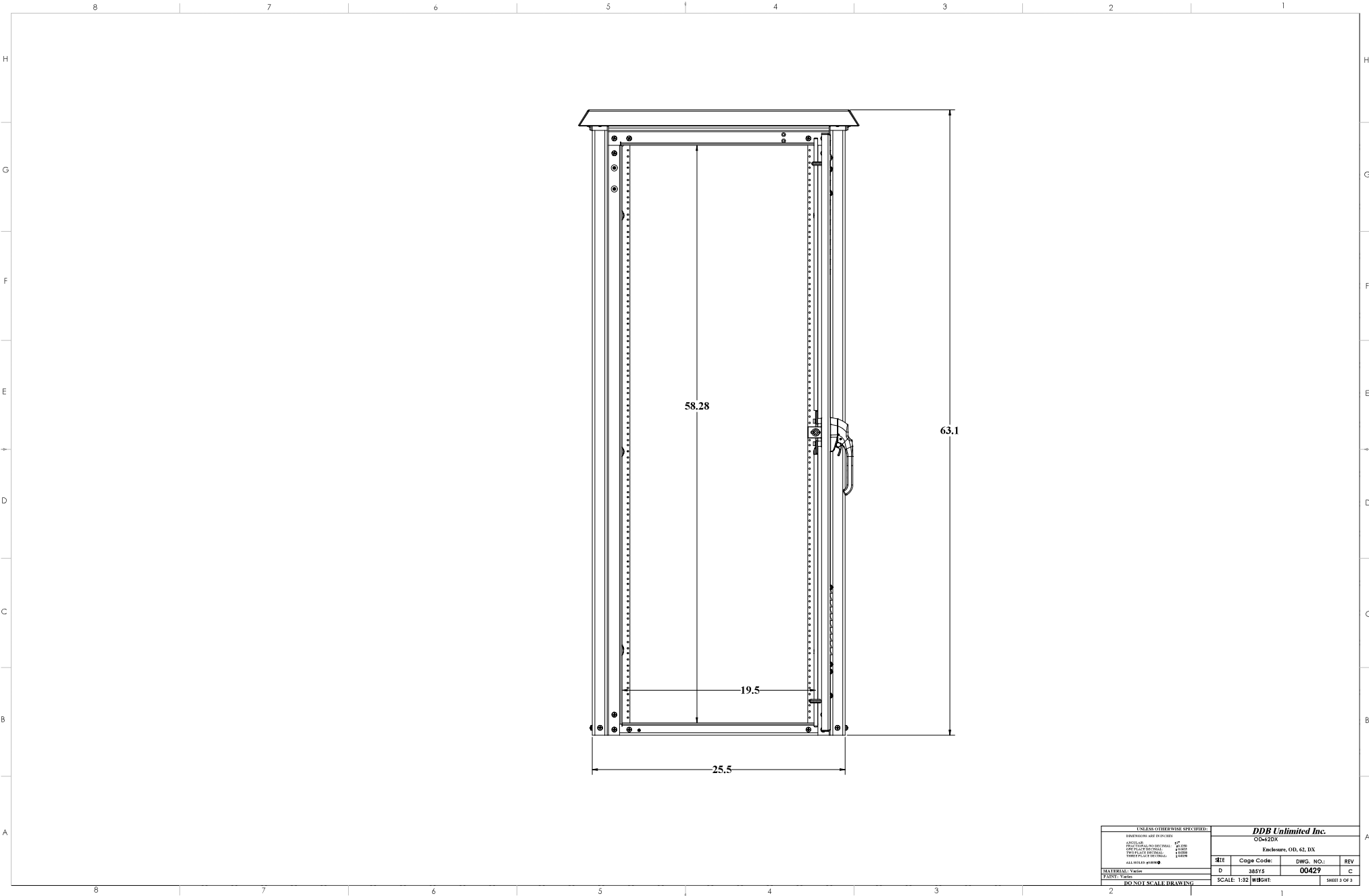
**WEB DRAWING (NOT FOR FABRICATION)**

UNLESS OTHERWISE SPECIFIED:		<b>DDB Unlimited Inc.</b>	
DIMENSIONS ARE IN INCHES		<b>DX Closed</b>	
ANGLE: 90°	1" = 1"	<b>OD Family Enclosure, DX, Closed/DX Closed</b>	
OR: 45°	1" = 1"		
OR: 135°	1" = 1"		
OR: 225°	1" = 1"		
THREE PLACE DECIMAL:	0.001		
ALL HOLES PER 			
<b>MATERIAL:</b> VITON	<b>SIZE</b>	<b>Cage Code:</b>	<b>DWG. NO.:</b>
<b>FINISH:</b> VITON	<b>D</b>	<b>385Y5</b>	<b>00429</b>
<b>DO NOT SCALE DRAWING</b>	<b>SCALE:</b> 1:32	<b>WEIGHT:</b>	<b>SHEET 2 OF 3</b>
			<b>C</b>

File Location: (DD8) (EPDM Vault):  
C:\DD8\DD8\Drawing Requests\Customers\DD8 WEB DWG\OD Family WEB\DR-00429 (OD-62DX)\

THE INFORMATION CONTAINED IN THIS DRAWING IS THE SOLE PROPERTY OF DDB Unlimited, INC. ANY REPRODUCTION IN PART OR AS A WHOLE WITHOUT THE WRITTEN PERMISSION OF DDB Unlimited, INC. IS PROHIBITED.

DDJ8 FORM 7.1-2 REV AK 08/02/17



File Location: (DDJ8) (EPDM Vau) \\  
C:\DDJ8\DDJ8\Drawing Request\C\customer\DDJ8 WEB DWG\DD Family WEB\DR-00429 (DD-  
62DX)\

UNLESS OTHERWISE SPECIFIED:		DDb Unlimited Inc.	
DIMENSIONS ARE IN INCHES		OD-420X	
ANGLE C/L	1/8"		
FRACTURAL NO. DECIMAL	1/16"		
OD PLACE DECIMAL	1/16000		
TWO PLACE DECIMAL	1/1000		
THREE PLACE DECIMAL	1/10000		
ALL DIMENSIONS IN INCHES		Enclosure, OD, 62, DX	
SIZE	Cage Code:	DWG. NO.:	REV
D	385Y5	00429	C
SCALE: 1:32		WIGHT:	SHEET 3 OF 3
MATERIAL: VARIN			
F. MNTY: VARIN			
DO NOT SCALE DRAWING			