



An ISO 9001
Certified company

SOD Series

SOD-192420



Why Choose the SOD Series?

The SOD series enclosure is the ultimate choice for your outdoor equipment racking applications when versatility is needed. Being constructed of our Alumiflex® material, you'll find it noticeably lighter than steel, yet strong enough to rack even the heaviest equipment. When choosing the SOD series, ease of installation along with pad, pole and wall mounting options provide endless possibilities for where you can locate. With many standard features including 3-point pad locking system, venting system with reusable filter and top solar shield; you will see the value quickly add up. Add to this a long list of available options including HVAC climate controls, electrical and cable entry solutions allows the SOD series to provide a flexibility of options that are second to none. DDB offers a state-of-the-art design, a competitive price, benchmark lead times and a guaranteed delivery, all backed up with an industry leading 15-year warranty on every enclosure. Put DDB's substantial stock to work for you today. Contact our professional staff to assist you with your made-to-order solution.



Features

- 0.125" Aluminum Construction
- Stainless Steel External Hardware/Hinge
- Heavy Duty Out-Door Construction
- Pad/Wall/Pole Mountable
- Front Door Access
- Custom Colors Available
- Cream & Red Powder-Coat in Stock
- Flexible and Scalable
- 15 Year Warranty
- Quick Shipping



Application Types

- Telecommunications
- Wireless/Broadband
- Fiber Optics
- Back Haul
- Small Cell/DAS
- Utility
- Base Station
- Military
- Trailer-Based Communications
- Wi-Fi
- LTEE/4G/5G

Industry Standards:

NEMA 3R as shown; NEMA 4 and 4X configurable (unlisted to environmental rating)

SOD Series Listed to UL 50/50E Type 4 and 3R Available

2301 S. HWY 77 Pauls Valley, OK 73075

T: (800) 753-8459 – F: (877) 220-7236

sales@ddbunlimited.com www.ddbunlimited.com

Weight and Dimensions

Approximate Exterior Enclosure Dimensions:

21"H x 24"W x 24"D

Shipping Dimensions:

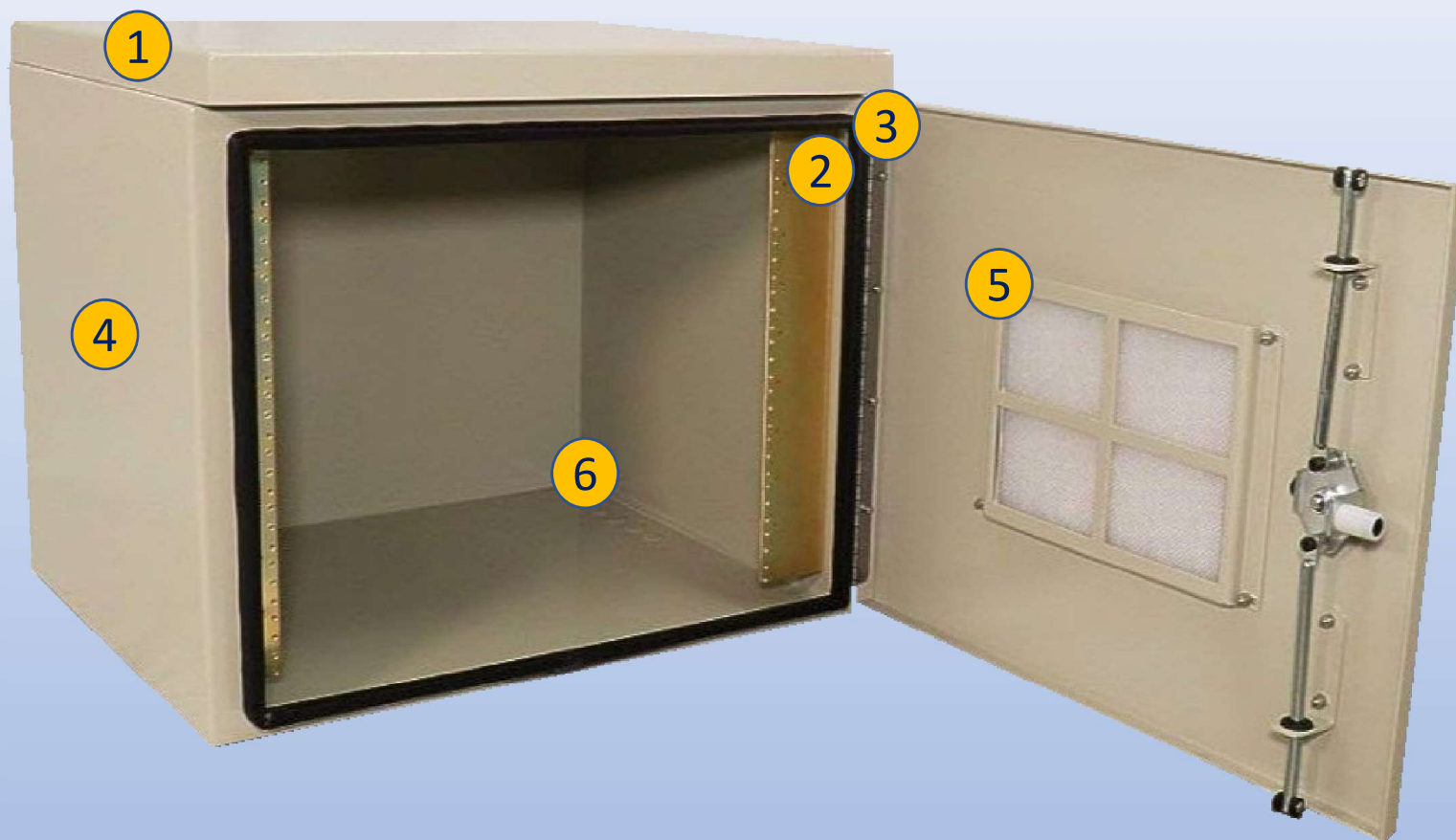
32"W x 32"L - Palletized

Approximate Shipping Weight:

66 lbs.

SOD Series

SOD-192420



Features

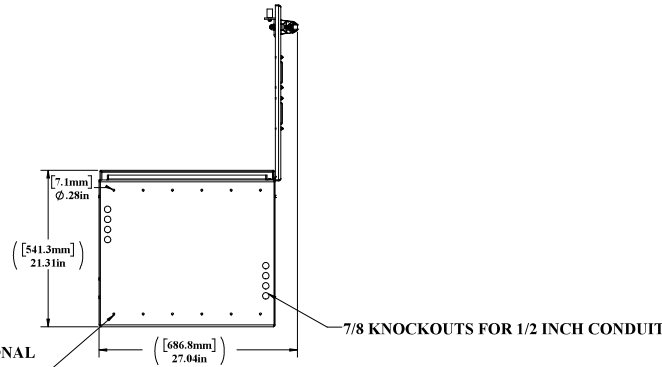
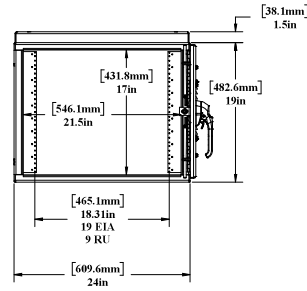
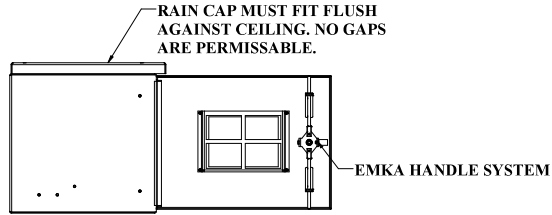
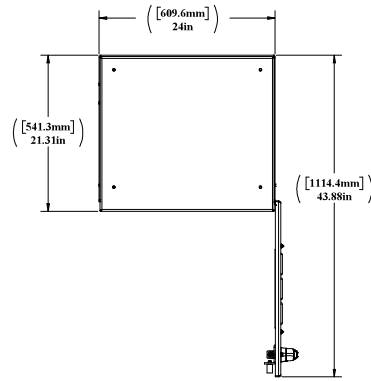
1. Solar Shield (Alumishield)
2. 19" Racking Rails
3. Stainless Steel Door Hinge
4. Powder-Coat Cream
5. Reusable Vent Filter
6. ½" Conduit Knockouts

2301 S. HWY 77 Pauls Valley, OK 73075

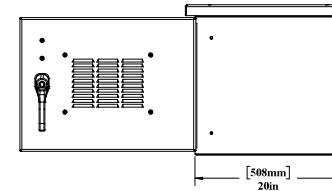
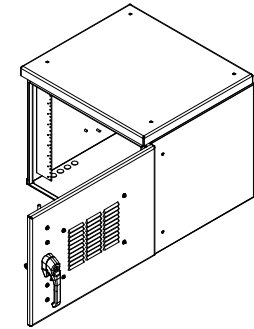
T: (800) 753-8459 – F: (877) 220-7236

sales@ddbunlimited.com www.ddbunlimited.com

WEB DRAWING (NOT FOR FABRICATION)



REVISIONS		
REV.	DESCRIPTION	DATE
A	WEB DRAWING PER DR 01367	4/12/16



NOTES: UNLESS OTHERWISE SPECIFIED

- DIMENSIONS AND TOLERANCES ARE IN ACCORDANCE WITH ASME Y14.5M
- DIMENSIONS ARE IN INCHES, UNLESS OTHERWISE SPECIFIED
- THIS IS A SUPPLEMENTAL DRAWING AND MAY NOT BE FULLY DIMENSIONED. THE NOTES, TOLERANCES, AND SPECIAL INSTRUCTIONS ARE TO BE USED ALONG WITH THE LATEST REVISION OF THE SOLID DATABASE. THE PART OR ASSEMBLY IS TO BE CONTROLLED PER THE ELECTRONIC FILE
- ALL PEM STUDS SHALL BE PHS FOR STAINLESS ENCLOSURES AND PHA FOR ALUMINUM
- ALL EXTERIOR WASHERS SHALL BE SEALING WASHERS
- THE FOLLOWING WEATHER STRIPPING SHALL BE USED FOR THE FOLLOWING APPLICATIONS:
DOOR LIP - TRIMLOCK 3100B3X18C
FAN PLATES - STRICKER-TEE 15838
- ACS - STICKER-TEE 148314
- CUSTOM ENCLOSURES SHALL HAVE SECURITY TORX FOR ALL EXTERIOR HARDWARE
- SYMBOL DENOTES CRITICAL DIMENSIONS AND MUST BE INSPECTED
- REMOVE ALL BURRS AND BEAD EDGES 0.03" MAX RADIUS OR CHAMFER
- DO NOT DRIBBLE PRESS-FIT HOLES
- DIMENSIONS SHALL APPLY AFTER ALCOHOL PAINT FINISH OR COAT IS APPLIED
- INSTALL PRESS-FIT STANDOFFS, STUDS, AND NUTS IN ACCORDANCE WITH THE MANUFACTURER'S SPECIFICATIONS
- ALL OPEN HOLES SHALL BE POPULATED WITH APPLICABLE HARDWARE
- IDENTIFY PART WITH PART NUMBER, REVISION LETTER, AND SERIAL NUMBER
- FINISHED PART TO BE FREE OF OILS, LUBRICANTS, AND OTHER CONTAMINANTS
- NO NUTS OR LOCK NUTS TO BE USED ON ANY PEM STUDS, UNLESS OTHERWISE SPECIFIED
- ALL PEM STUDS WILL BE SECURED WITH EXTERNAL TOOTH WASHER AND STANDARD NUTS
- TOLERANCES UNLESS OTHERWISE SPECIFIED:
a. HOLE SIZE: ± 0.005
b. HOLE TO HOLE: ± 0.005
c. HOLE TO EDGE: ± 0.010
d. HOLE TO FOLD: ± 0.005
e. FOLD TO FOLD: ± 0.020

ETCHING FOR OPTIONAL MOUNTING FEET.

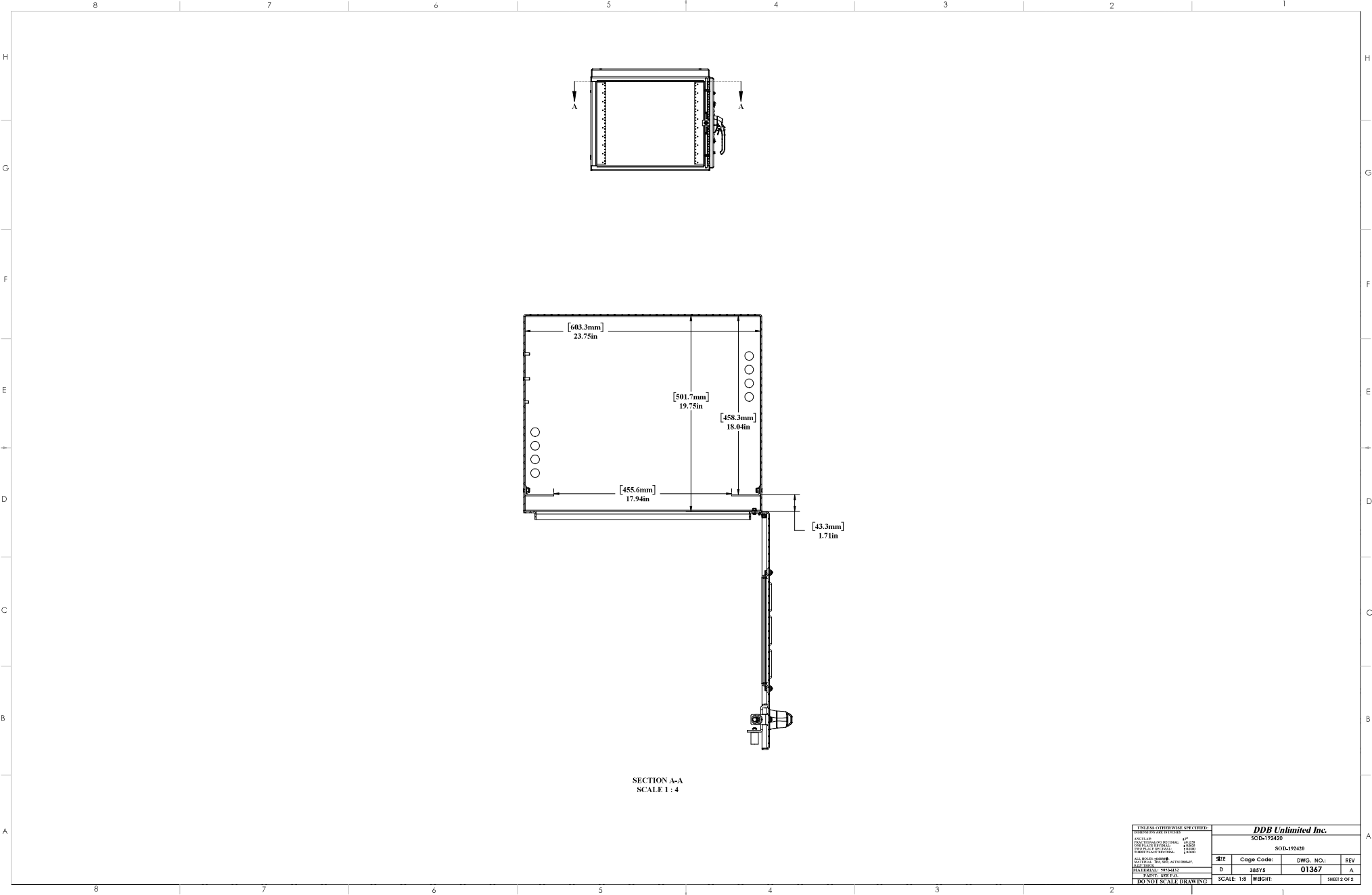
WEB DRAWING (NOT FOR FABRICATION)



UNLESS OTHERWISE SPECIFIED:		NAME	DATE	DDB Unlimited Inc.			
DESCRIPTION AND PART NO.	Model No.	0508	0067				
APPROVAL AND CONTROL:	Drawn by:	zscott	06/13/16	S03-492429			
DESIGNED BY:	Checked by:						
DATE OF DESIGN:	Sales Rep:	Compelit		SITE	Cage Code:	DWG. NO.:	REV
DATE OF MANUFACTURE:	Q.A. Appr.:	48/3844	04/28/16	D	38515	01367	A
DATE OF ASSEMBLY:	Prod.Mgr.:	Clarek	04/28/16	SCALE: 1:8	WEIGHT: 46 lbs.	SHEET 1 OF 2	
DATE OF FINISH:	PAINT: SEE P.A.						
DATE OF SHIP:	DO NOT SCALE DRAWING						

THE INFORMATION CONTAINED IN THIS DRAWING IS THE SOLE PROPERTY OF DDB Unlimited, INC. ANY REPRODUCTION IN PART OR AS A WHOLE WITHOUT THE WRITTEN PERMISSION OF DDB Unlimited, INC. IS PROHIBITED.

DDB FORM 7-1-2 REV. A 12/08/15



<small> GENERAL NOTES: 1. REFER TO DRAWING FOR DIMENSIONS. 2. ALL DIMENSIONS ARE IN MILLIMETERS UNLESS OTHERWISE SPECIFIED. 3. DIMENSIONS ARE TO FACE UNLESS OTHERWISE SPECIFIED. 4. DIMENSIONS ARE TO CENTERLINE UNLESS OTHERWISE SPECIFIED. 5. DIMENSIONS ARE TO CENTERLINE UNLESS OTHERWISE SPECIFIED. 6. DIMENSIONS ARE TO CENTERLINE UNLESS OTHERWISE SPECIFIED. 7. DIMENSIONS ARE TO CENTERLINE UNLESS OTHERWISE SPECIFIED. 8. DIMENSIONS ARE TO CENTERLINE UNLESS OTHERWISE SPECIFIED. 9. DIMENSIONS ARE TO CENTERLINE UNLESS OTHERWISE SPECIFIED. 10. DIMENSIONS ARE TO CENTERLINE UNLESS OTHERWISE SPECIFIED. </small>			
DDB Unlimited Inc.			
SQC-TY2420			
REV	Code Code:	DWG. NO.:	REV
D	28515	01367	A
SCALE 1:8		WEIGHT:	SHEET 2 OF 2

THE INFORMATION CONTAINED IN THIS DRAWING IS THE SOLE PROPERTY OF DDB Unlimited, INC. ANY REPRODUCTION IN PART OR AS A WHOLE WITHOUT THE WRITTEN PERMISSION OF DDB Unlimited, INC. IS PROHIBITED.