



An ISO 9001
Certified company

SOD Series

SOD-372420



Why Choose the SOD Series?

The SOD series enclosure is the ultimate choice for your outdoor equipment racking applications when versatility is needed. Being constructed of our Alumiflex® material, you'll find it noticeably lighter than steel, yet strong enough to rack even the heaviest equipment. When choosing the SOD series, ease of installation along with pad, pole and wall mounting options provide endless possibilities for where you can locate. With many standard features including 3-point pad locking system, venting system with reusable filter and top solar shield; you will see the value quickly add up. Add to this a long list of available options including HVAC climate controls, electrical and cable entry solutions allows the SOD series to provide a flexibility of options that are second to none. DDB offers a state-of-the-art design, a competitive price, benchmark lead times and a guaranteed delivery, all backed up with an industry leading 15-year warranty on every enclosure. Put DDB's substantial stock to work for you today. Contact our professional staff to assist you with your made-to-order solution.



Features

- 0.125" Aluminum Construction
- Stainless Steel External Hardware/Hinge
- Heavy Duty Out-Door Construction
- Pad/Wall/Pole Mountable
- Front Door Access
- Custom Colors Available
- Cream & Red Powder-Coat in Stock
- Flexible and Scalable
- 15 Year Warranty
- Quick Shipping



Application Types

- Telecommunications
- Wireless/Broadband
- Fiber Optics
- Back Haul
- Small Cell/DAS
- Utility
- Base Station
- Military
- Trailer-Based Communications
- Wi-Fi
- LTEE/4G/5G

Industry Standards:

NEMA 3R as shown; NEMA 4 and 4X configurable (unlisted to environmental rating)

SOD Series Listed to UL 50/50E Type 4 and 3R Available

2301 S. HWY 77 Pauls Valley, OK 73075

T: (800) 753-8459 – F: (877) 220-7236

sales@ddbunlimited.com www.ddbunlimited.com

Weight and Dimensions

Approximate Exterior Enclosure Dimensions:

39"H x 24"W x 24"D

Shipping Dimensions:

32"W x 32"L - Palletized

Approximate Shipping Weight:

87 lbs.

SOD Series

SOD-372420



Features

1. Solar Shield (Alumishield)
2. 19" Racking Rails
3. Stainless Steel Door Hinge
4. Powder-Coat Cream
5. Reusable Vent Filter
6. 1/2" Conduit Knockouts

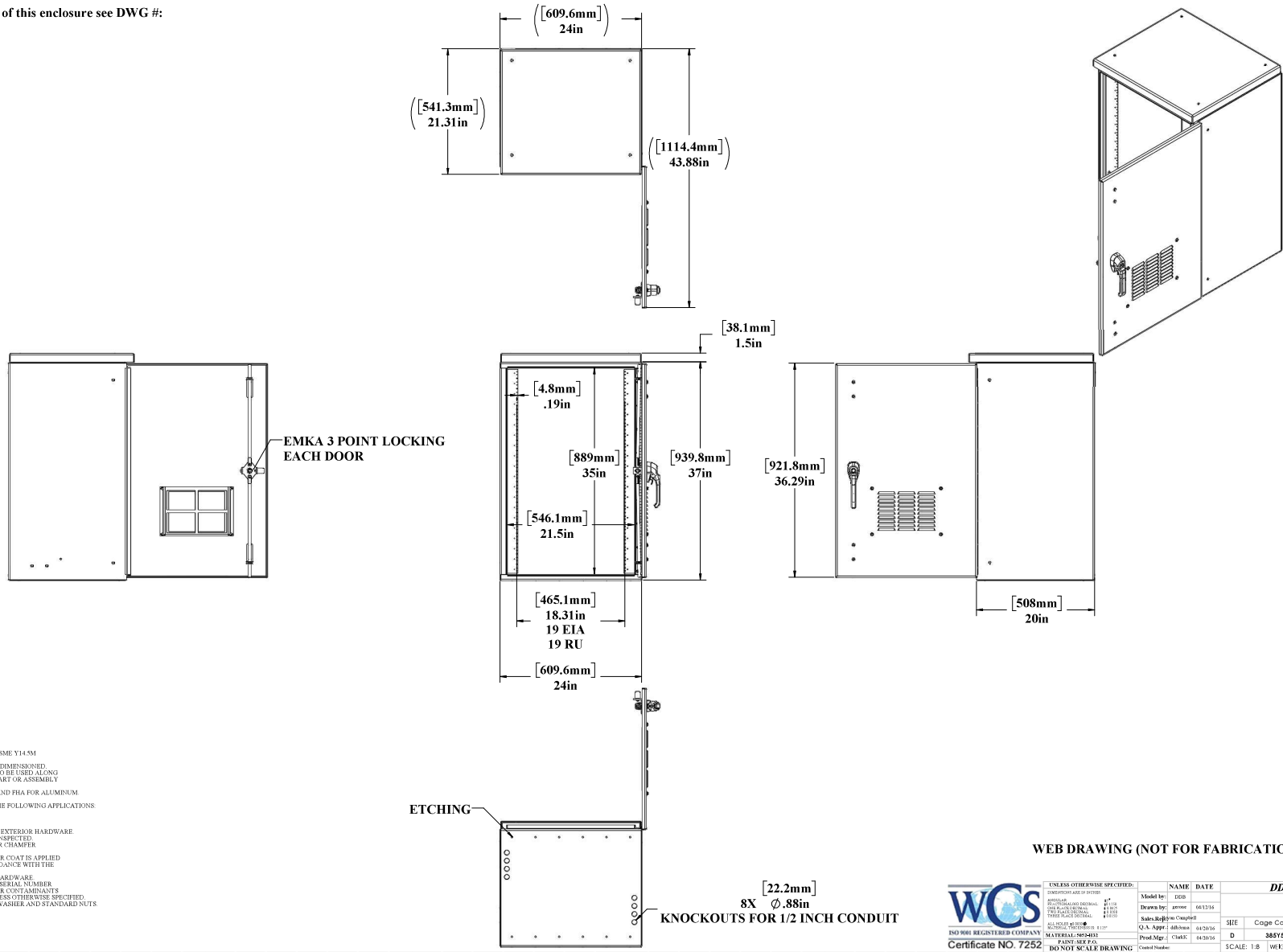
2301 S. HWY 77 Pauls Valley, OK 73075
T: (800) 753-8459 – F: (877) 220-7236

sales@ddbunlimited.com www.ddbunlimited.com

WEB DRAWING (NOT FOR FABRICATION)

For Fabrication Drawing of this enclosure see DWG #:

REVISIONS		
REV.	DESCRIPTION	DATE
A	Web Drawing per DR-01368 REV F IS THE CURRENT WEB DRAWING NO PREVIOUS DRAWINGS HAVE BEEN MADE TO THIS REV F IS BEING FABRICATED AT THIS TIME	4/12/16



NOTES - UNLESS OTHERWISE SPECIFIED

- 1 DIMENSIONS AND TOLERANCES ARE IN ACCORDANCE WITH ASME Y14.5M
- 2 DIMENSIONS ARE IN INCHES, UNLESS OTHERWISE SPECIFIED
- 3 THIS IS A SUPPLEMENTAL DRAWING AND MAY NOT BE FULLY DIMENSIONED
- 4 THE NOTES, TOLERANCES, AND SPECIAL INSTRUCTIONS ARE TO BE USED ALONG WITH THE LATEST REVISION OF THE SOLID DATABASE. THE PART OR ASSEMBLY IS TO BE CONTROLLED PER THE ELECTRONIC FILE
- 5 ALL PEM STUDS SHALL BE PHS FOR STAINLESS ENCLOSURES AND PHA FOR ALUMINUM
- 6 ALL EXTERIOR WASHERS SHALL BE SEALING WASHERS
- 7 THE FOLLOWING WEATHER STRIPPING SHALL BE USED FOR THE FOLLOWING APPLICATIONS:
DOOR LIP - TRIMLOCK 3100BX18C
FAN PLATES - STICKER-ITL 15838
- 8 ACS - STICKER-ITL 146314
- 9 CUSTOM ENCLOSURES SHALL HAVE SECURITY TORX FOR ALL EXTERIOR HARDWARE
- 10 SYMBOL \odot DENOTES CRITICAL DIMENSIONS AND MUST BE INSPECTED
- 11 REMOVE ALL BURRS AND BEAD EDGES 0.03" MAX RADIUS OR CHAMFER
- 12 DO NOT DRIBBLE PRESS-FIT HOLES
- 13 DIMENSIONS SHALL APPLY AFTER ALCOHOL PAINT FINISH OR COAT IS APPLIED
- 14 INSTALL PRESS-FIT STANDOFFS, STUDS, AND NUTS IN ACCORDANCE WITH THE MANUFACTURER'S SPECIFICATIONS
- 15 ALL OPEN HOLES SHALL BE POPULATED WITH APPLICABLE HARDWARE
- 16 IDENTIFY PART WITH PART NUMBER, REVISION LETTER, AND SERIAL NUMBER
- 17 FINISHED PART TO BE FREE OF OILS, LUBRICANTS, AND OTHER CONTAMINANTS
- 18 NO NUTS OR LOCK NUTS TO BE USED ON ANY PEM STUDS, UNLESS OTHERWISE SPECIFIED
- 19 ALL PEM STUDS WILL BE SECURED WITH EXTERNAL TOOTH WASHER AND STANDARD NUTS
- 20 TOLERANCES UNLESS OTHERWISE SPECIFIED:
a HOLE SIZE: ± 0.003
b HOLE TO HOLE: ± 0.005
c HOLE TO EDGE: ± 0.010
d HOLE TO FOLD: ± 0.005
e FOLD TO FOLD: ± 0.020

WEB DRAWING (NOT FOR FABRICATION)



UNLESS OTHERWISE SPECIFIED:		NAME	DATE	DDB Unlimited Inc.			
DESCRIPTION AND PART NO.	Model No.	0508	0067				
APPROVAL AND CONTROL:	Drawn by:	arose	06/13/16	S03-372420			
DESIGNED BY:	Checked by:						
DATE OF REVISION:	Sales Rep:	Complete					
DATE OF ORIGINAL:	Q.A. Appr:	4/8/2016	4/8/2016	SHE	Cage Code:	DWG. NO.:	REV
DATE OF THIS REVISION:	Prod.Mgr:	Clare	4/8/2016	D	38515	01368	A
DATE OF THIS REVISION:	PAINT SEE P/A			SCALE: 1:8	WEIGHT: 67 lbs.	SHEET 1 OF 2	
DATE OF THIS REVISION:	DO NOT SCALE DRAWING						

THE INFORMATION CONTAINED IN THIS DRAWING IS THE SOLE PROPERTY OF DDB Unlimited, INC. ANY REPRODUCTION IN PART OR AS A WHOLE WITHOUT THE WRITTEN PERMISSION OF DDB Unlimited, INC. IS PROHIBITED.

DDB FORM 7-12-REV E 04/25/13

8 7 6 5 4 3 2 1

H

G

F

E

D

C

B

A

H

G

F

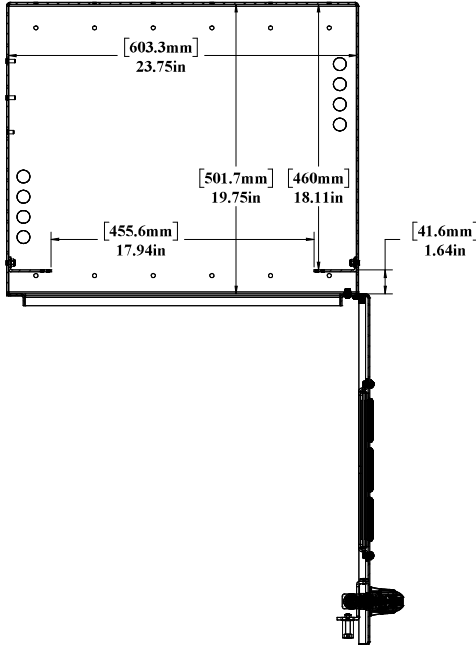
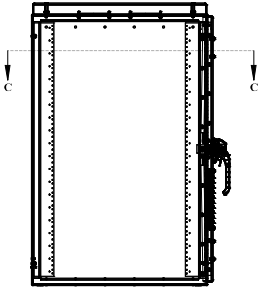
E

D

C

B

A



SECTION C-C
SCALE 1 : 4

GENERAL NOTES AND SPECIFICATIONS: DRAWING NUMBER: SOC-372420 TITLE: 90DJ-372420 DATE: 12/08/15 DRAWN BY: 12/08/15 CHECKED BY: 12/08/15 APPROVED BY: 12/08/15 MATERIAL: 12/08/15 FINISH: 12/08/15 TOLERANCES: 12/08/15 DIMENSIONS: 12/08/15 UNIT: 12/08/15 SCALE: 1:4 SHEET: 2 OF 2			
DDB Unlimited Inc.			
SHEET	Code Code:	DWG. NO.:	REV
D	38515	01348	A
SCALE 1:8		WEIGHT:	SHEET 2 OF 2

DDB FORM 7-12 REV. 1 12/08/15

THE INFORMATION CONTAINED IN THIS DRAWING IS THE SOLE PROPERTY OF DDB Unlimited, INC. ANY REPRODUCTION IN PART OR AS A WHOLE WITHOUT THE WRITTEN PERMISSION OF DDB Unlimited, INC. IS PROHIBITED.