



An ISO9001  
Certified company

# R7 Series

## R7-54DXW

Made in America



Believing in American  
Craftsmanship



## Why Choose the R7 Series?

The R7 series is built to the highest of American standards. "Rugged", "Built to last", and "American craftsmanship" are words that defined an era and built a country. The R7 series embodies these words and the spirit that comes with them. Built in the heartland of America from our own patented Alumiflex®, lighter than steel, but strong enough to take on the heaviest of your outdoor racking needs. The R7 series comes with a multitude of functional standard features such as: incorporating the versatile strut system for adjustable racking, the security of a 3 point locking system, our patented Alumishield® solar cap to manage heat loads, side spool-up cabinet for cable entry, electrical panel with internal outlets, adjustable HVAC, and much more; all focused on giving the best value and turn key solution available. Our design is purpose driven with two objectives in mind, to ease the installation process which saves you time and money and to make sure your equipment is secure once you close the doors on your enclosure. DDB offers a state-of-the-art design, a competitive price, benchmark lead times and a guaranteed delivery, all backed up with an industry leading 15-year warranty on every enclosure. Put DDB's substantial stock to work for you today. Contact our professional staff to assist you with your made-to-order solution.



## Features

- 0.125" Aluminum Construction
- Stainless Steel External Hardware/Hinge
- 3 Point Lock System
- Heavy Duty Outdoor Construction
- Front & Rear Access
- Custom Colors Available
- Flexible and Scalable
- 15 Year Warranty
- Quick Shipping

## Application Types

- Telecommunications
- Wireless/Broadband
- Fiber Optics
- Back Haul
- Small Cell/DAS
- Public Safety
- Utility
- Base Station
- Military
- Trailer-Based Communications
- Wi-Fi
- LTEE/4G/5G



## Industry Standards:

- NEMA 4 and 4X configurable (unlisted to environmental rating)
- OD Series Listed to UL 50/50E Type 4 Available
- ETL listed to UL Standard 60950-1/CSA 22.2C
- 2301 S. HWY 77 Pauls Valley, OK 73075
- T: (800) 753-8459 – F: (877) 220-7236
- [sales@ddbunlimited.com](mailto:sales@ddbunlimited.com) [www.ddbunlimited.com](http://www.ddbunlimited.com)

## Weight and Dimensions

- Approximate Exterior Enclosure Dimensions:  
56"H x 26"W x 25"D
- Shipping Dimensions:  
45" x 60" - Decked Pallet
- Approximate Shipping Weight:  
356 lbs

# R7 Series

## R7-54DXW



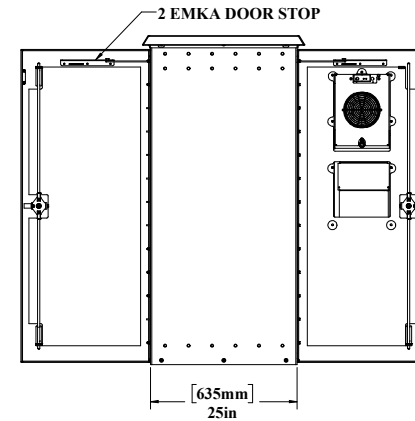
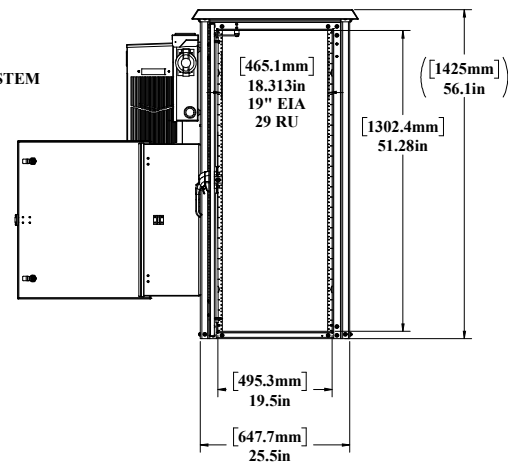
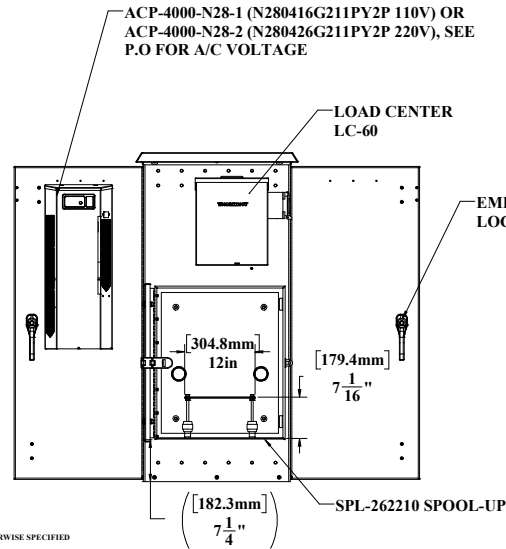
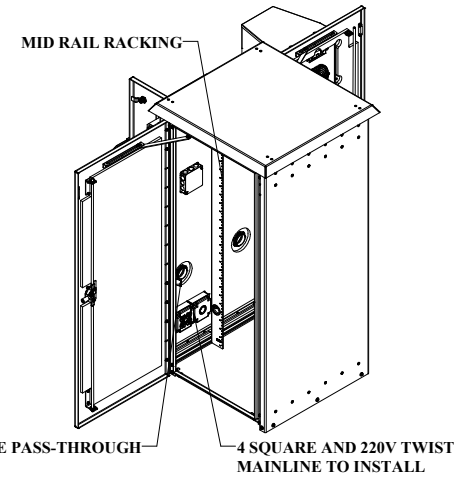
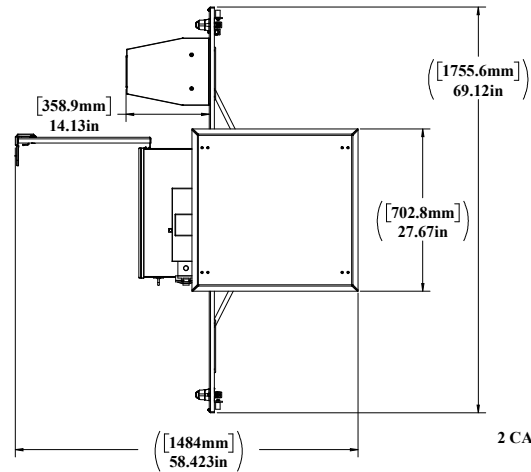
### Features

1. Solar Shield (Alumisheild)
2. Stainless Steel Door Hinge
3. HVAC Climate Control
4. Rear Door Access
5. 19" Adjustable Racking Rails
6. Cable Spool-Up Box
7. Electrical Panel
8. Internal Outlets

2301 S. HWY 77 Pauls Valley, OK 73075  
T: (800) 753-8459 – F: (877) 220-7236

[sales@ddbunlimited.com](mailto:sales@ddbunlimited.com) [www.ddbunlimited.com](http://www.ddbunlimited.com)

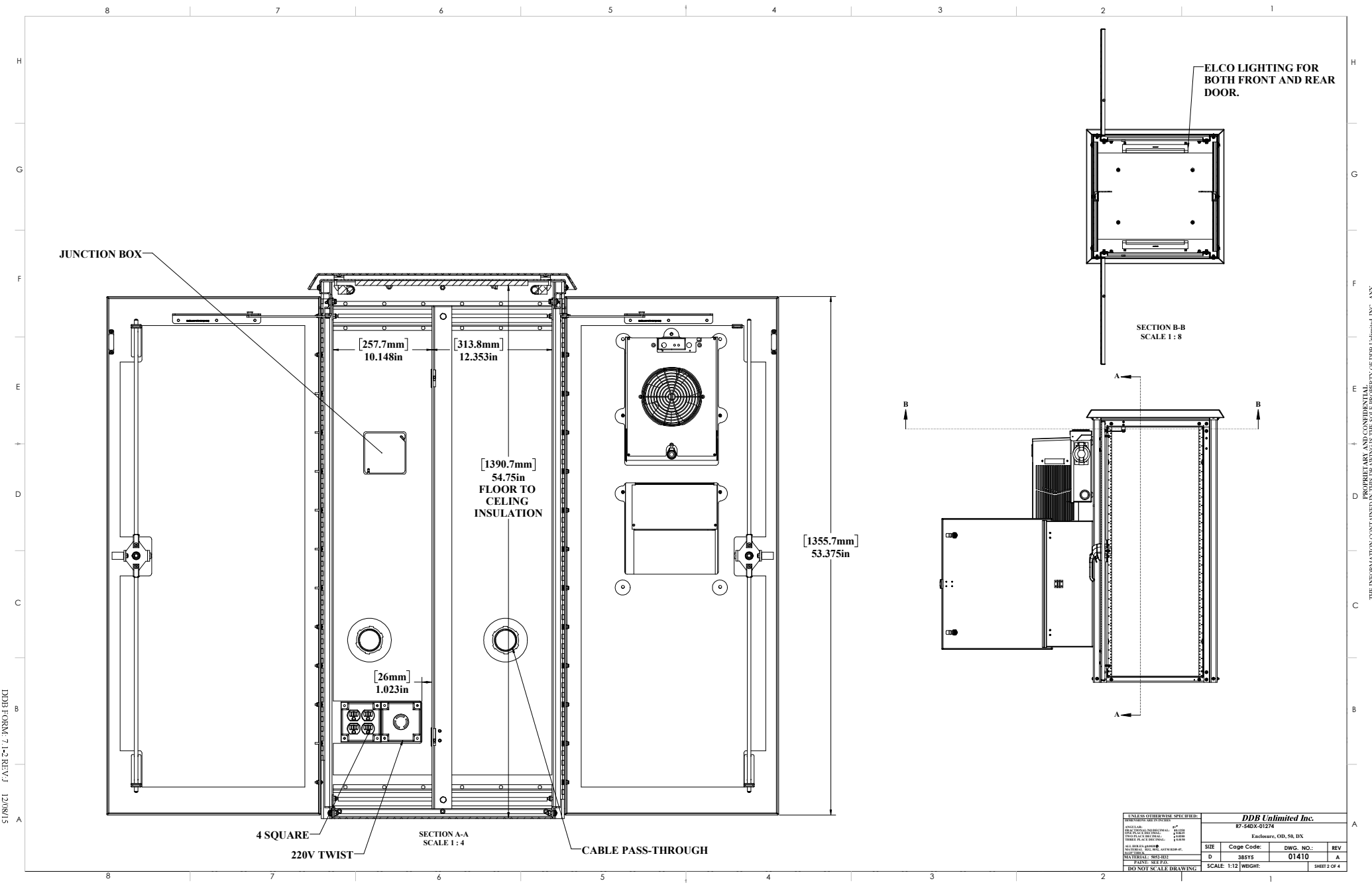
REVISIONS		
REV.	DESCRIPTION	DATE
A	CREATED WEB DWG PER DR-01410	6/2/16



NOTES: UNLESS OTHERWISE SPECIFIED

- DIMENSIONS AND TOLERANCES ARE IN ACCORDANCE WITH ASME Y14.5M
- DIMENSIONS ARE IN INCHES, UNLESS OTHERWISE SPECIFIED
- THIS IS A SUPPLEMENTAL DRAWING AND MAY NOT BE FULLY DIMENSIONED.
- THE NOTES, TOLERANCES, AND SPECIAL INSTRUCTIONS ARE TO BE USED ALONG WITH THE LATEST REVISION OF THE SOLID DATABASE. THE PART OR ASSEMBLY IS TO BE CONTROLLED PER THE ELECTRONIC FILE.
- ALL PEM STUDS SHALL BE FHS FOR STAINLESS ENCLOSURES AND FHS FOR ALUMINUM.
- ALL EXTERIOR WASHERS SHALL BE AZTEC SEALING WASHERS.
- THE FOLLOWING WEATHER STRIPPING SHALL BE USED FOR THE FOLLOWING APPLICATIONS:  
DOOR LIP - TERMOLOCK 108BXSU MC 1150 SHALL USE SANDS GASKET.  
FAN PLATES - STICKER-TITE 18638
- ALL S - STICKER-TITE 14634
- CUSTOM ENCLOSURES SHALL HAVE SECURITY MEANS FOR ALL EXTERIOR HARDWARE.
- SYMBOL (C) DENOTES CRITICAL DIMENSIONS AND MUST BE INSPECTED.
- PARENTHESES ( ) DENOTES REFERENCE DIMENSIONS ONLY.
- REMOVE ALL BURRS AND SHARP EDGES 0.02" MAX RADIUS OR CHAMFER
- DO NOT DRIBBER PRESS FIT HOLES
- DIMENSIONS SHALL APPLY AFTER PAINT, FINISH OR COAT IS APPLIED
- INSTALL PRESS FIT ST ANDOFFS, STUDS, AND NUTS IN ACCORDANCE WITH THE MANUFACTURER'S SPECIFICATIONS.
- ALL OPEN HOLES SHALL BE POPULATED WITH APPLICABLE HARDWARE.
- FINISHED PART TO BE FREE OF OILS, LUBRICANTS, AND OTHER CONTAMINANTS. SHALL BE FREE OF SURFACE CRACKS.
- NO NYLON LOCK NUTS TO BE USED ON ANY PEM STUDS, UNLESS OTHERWISE SPECIFIED.
- ALL PEM STUDS WILL BE SECURED WITH EXTERNAL TOOTH WASHER AND STANDARD NUTS.
- TOLERANCES, UNLESS OTHERWISE SPECIFIED:  
a. HOLE SIZE:  $\pm 0.005$   
b. HOLE TO HOLE:  $\pm 0.005$   
c. HOLE TO EDGE:  $\pm 0.010$   
d. HOLE TO FOLD:  $\pm 0.015$   
e. FOLD TO FOLD:  $\pm 0.020$

UNLESS OTHERWISE SPECIFIED:		NAME	DATE	DDP Unlimited Inc.			
DIMENSIONS ARE IN INCHES		Model by:	mm	17-542X-01214			
ANGLE:	0°	Drawn by:	mm	Enclosure, OD, 50, DX			
FACE FINISH:	0.002	Sales/Reception	06/07/16	SIZE	Code Code:	DWG. NO.:	REV
EDGE FINISH:	0.002	U.S. DEKAS 40000	06/07/16	D	585YS	01410	A
PERF. FINISH:	0.002	Prod.Mgr.:	Check:	06/07/16	D	585YS	01410
SCALE:	1:12 WEIGHT:	General Number:		SHEET 1 OF 4			



JUNCTION BOX

ELCO LIGHTING FOR BOTH FRONT AND REAR DOOR.

[257.7mm]  
10.148in

[313.8mm]  
12.353in

[1390.7mm]  
54.75in  
FLOOR TO  
CEILING  
INSULATION

[1355.7mm]  
53.375in

[26mm]  
1.023in

4 SQUARE

220V TWIST

SECTION A-A  
SCALE 1:4

CABLE PASS-THROUGH

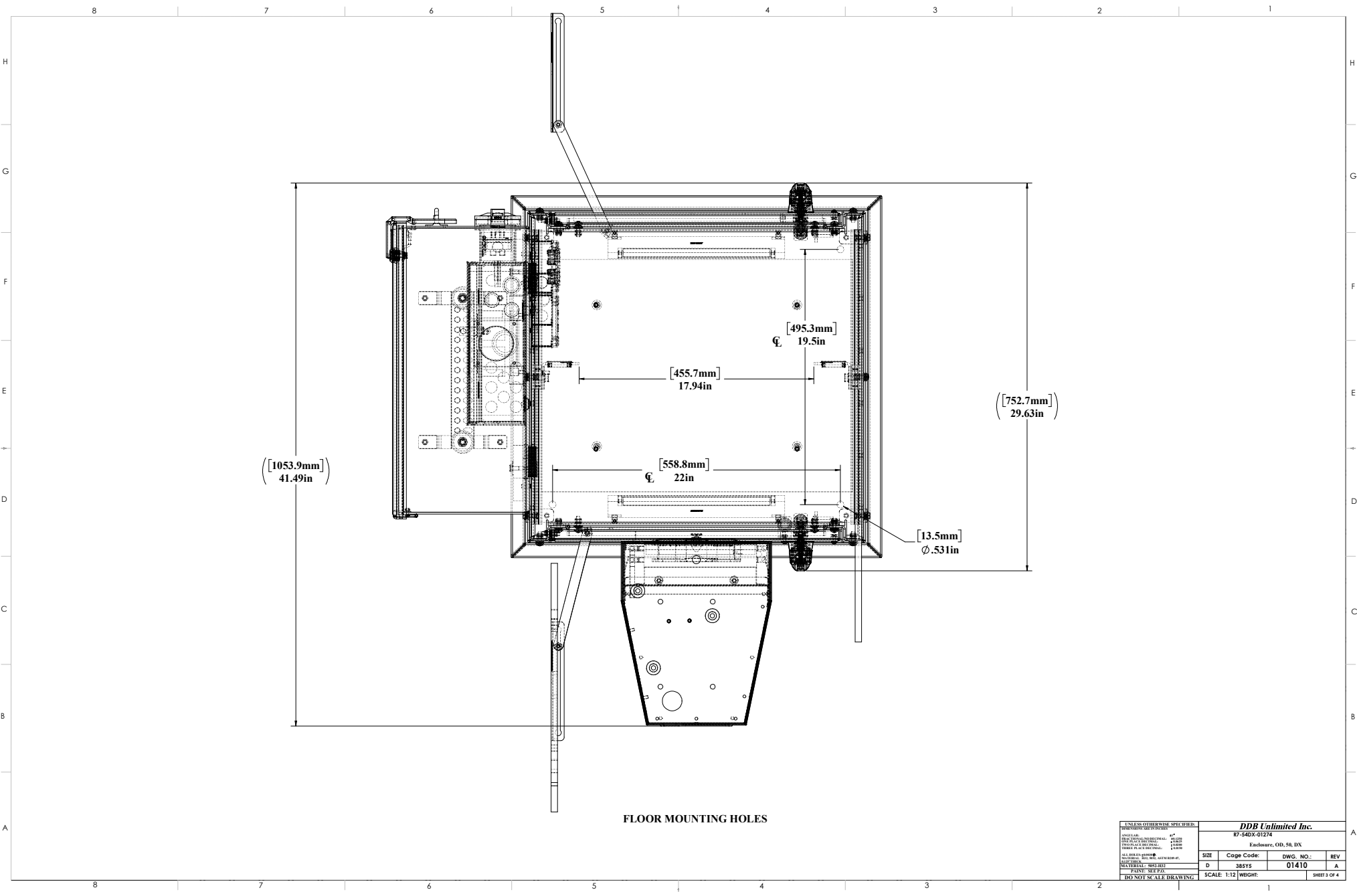
SECTION B-B  
SCALE 1:8

DDB Unlimited Inc. 87-54DX-01274 Easton, OH, 43825	
SIZE	Code Code: DWS. NO.: REV
D	385S 01410 A
SCALE 1:12 WEIGHT: SHEET 2 OF 4	

DDB UNLIMITED INC. AND/OR ITS AFFILIATED COMPANIES SHALL BE LIABLE FOR ANY AND ALL DAMAGES, INCLUDING REASONABLE ATTORNEY'S FEES, ARISING OUT OF OR FROM THIS DRAWING AS THE SOLE PROPERTY OF DDB UNLIMITED INC. ANY REPRODUCTION IN PART OR AS A WHOLE WITHOUT THE WRITTEN PERMISSION OF DDB UNLIMITED INC. IS PROHIBITED.

DDB FORM 7-1-2 REV A 12/08/15

DDBI FORM 7-1-2 REV. A 12/08/15

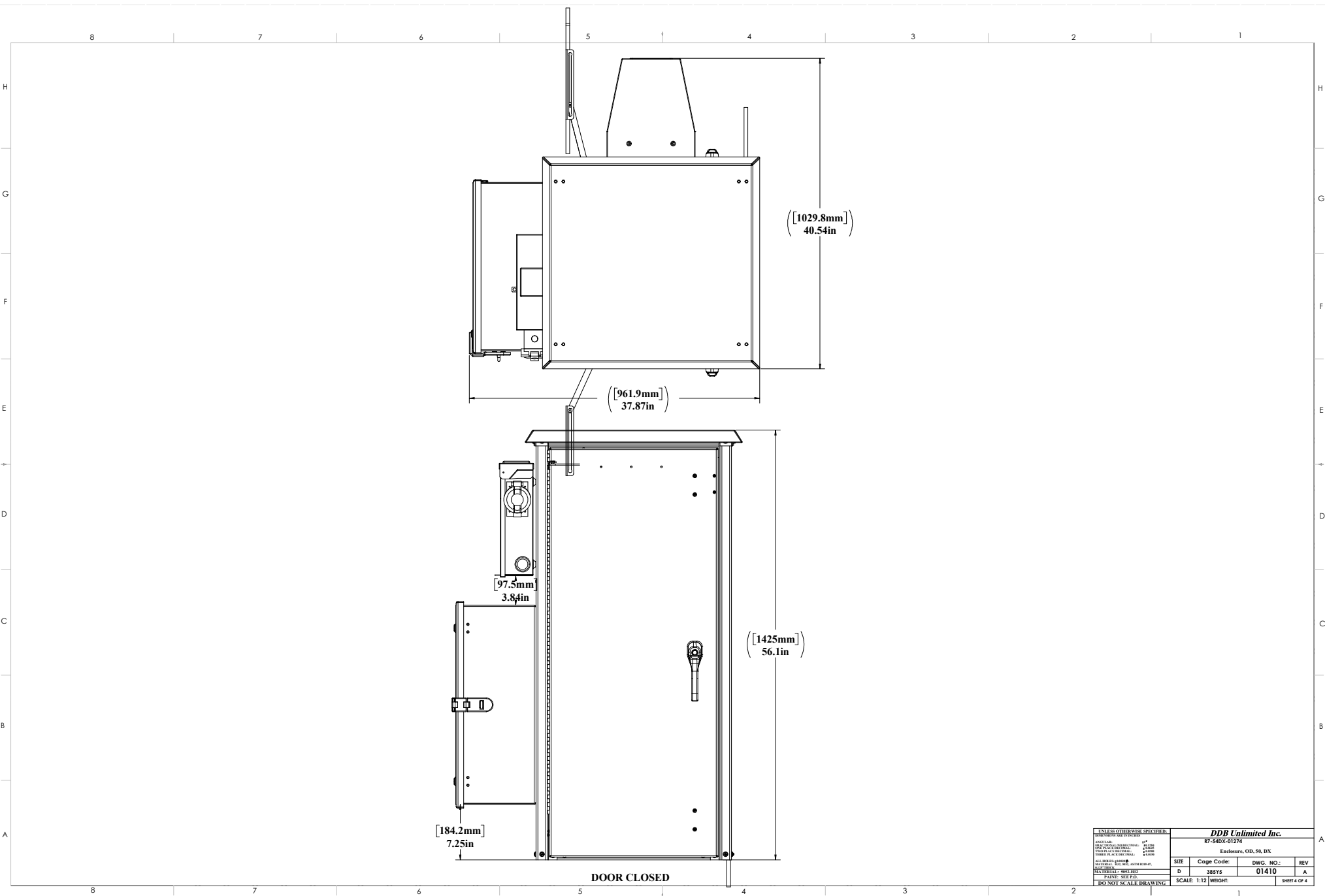


FLOOR MOUNTING HOLES

<b>UNLESS OTHERWISE SPECIFIED:</b> DIMENSIONS: MILLIMETERS FINISH: AS BUILT TOLERANCES: ±0.25mm SURFACE: POLISHED ALL DIMENSIONS UNLESS OTHERWISE SPECIFIED MATERIAL: 304 SS PAINT: SEE FD			
<b>DDBI Unlimited Inc.</b> 87-54DX-01274 Easton, OH, 43822			
SIZE	Code Code:	DWG. NO.:	REV
D	385YS	01410	A
SCALE: 1:12		WEIGHT:	SHEET 3 OF 4

DDBI, DDBI, AND DDBI UNLIMITED INC. ARE TRADEMARKS OF DDBI UNLIMITED INC. ANY REPRODUCTION OF THIS DRAWING WITHOUT THE WRITTEN PERMISSION OF DDBI UNLIMITED INC. IS PROHIBITED.

DDB FORM 7-1-2 REV A 12/08/15



DOOR CLOSED

<b>UNLESS OTHERWISE SPECIFIED:</b> DIMENSIONS UNLESS OTHERWISE SPECIFIED: DIMENSIONS IN MILLIMETERS (INCHES) DIMENSIONS IN MILLIMETERS (INCHES) DIMENSIONS IN MILLIMETERS (INCHES)			
<b>DDB Unlimited Inc.</b> 87-54DX-01274 Eastwren, OH, 58, DX			
SIZE	Code Code:	DWG. NO.:	REV
D	385YS	01410	A
SCALE: 1:12		WEIGHT:	SHEET 4 OF 4

ALL RIGHTS RESERVED AND CONSIDERED  
 THE INFORMATION CONTAINED IN THIS DRAWING IS THE SOLE PROPERTY OF DDB Unlimited, INC. ANY  
 REPRODUCTION IN PART OR AS A WHOLE WITHOUT THE WRITTEN PERMISSION OF DDB Unlimited, INC. IS PROHIBITED.