



An ISO 9001
Certified company

5G-LTE Micro



Why Choose the 5G-LTE Series?

The 5G-LTE series enclosure is the new evolution and standard for outdoor equipment racking applications. Being constructed of our Alumiflex® material, you'll find it noticeably lighter than steel, yet strong enough to rack even the heaviest equipment. We have taken everything that was great about the LTEE and made it better. With the 5G-LTE Micro, you will continue to find all the standard features you need including HVAC climate control, electrical load panel and side spool cabinet, but we didn't stop there. We have reversible 19" or 23" rack rails using our versatile "R-strut system" w/ improved the security and sealing ability of the 3-point locking system w/ door alarms to give greater security and weather protection, also including a light bar making this a superb battery enclosure. Again, and again, DDB leads the way with advanced design and features that just work. All while being the most competitively priced and readily available enclosure on the market. Put DDB's substantial stock to work for you today. Contact our professional staff to assist you with your made-to-order solution.



Features

- 0.125" Aluminum Construction
- Stainless Steel External Hardware/Hinge
- 3 Point Lock System
- Heavy Duty Out-Door Construction
- Front and Rear Access
- Flexible and Scalable
- 15 Year Warranty
- Quick Shipping

Application Types

Telecommunications
Wireless/Broadband
Fiber Optics
Back Haul
Public Safety
Utility
Base Station
Military
Wi-Fi
LTEE/4G/5G



Industry Standards:

NEMA 4 (Unlisted)
ETL listed to UL Standard 60950-1/CSA 22.2C

2301 S. HWY 77 Pauls Valley, OK 73075

T: (800) 753-8459 – F: (877) 220-7236

sales@ddbunlimited.com www.ddbunlimited.com

Weight and Dimensions

Approximate Exterior Enclosure Dimensions:

51"H x 30"W x 30"D

Shipping Dimensions:

50" x 60" - Palletized

Approximate Shipping Weight:

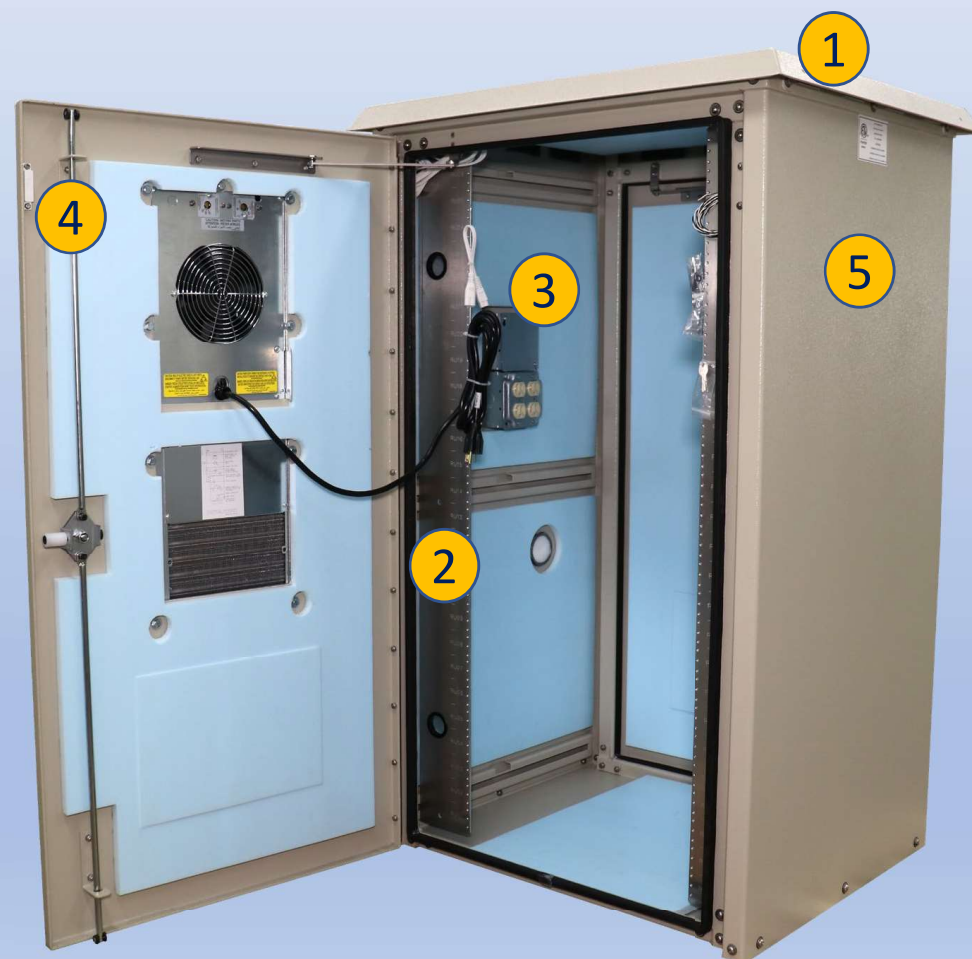
380 lbs.

5G-LTE Micro



Features

1. Solar Shield (Alumishield®)
2. 1 Set - 19" or 23" Reversible Adjustable Racking Rails
3. Electrical Outlet
4. 3 Point Locking System
5. Powder Coat Cream
6. 4000 BTU HVAC
7. Spool-Up Box w/ Pass Through Holes
8. 8 Space 100 Amp LC w/ 50 Amp Gen Plug

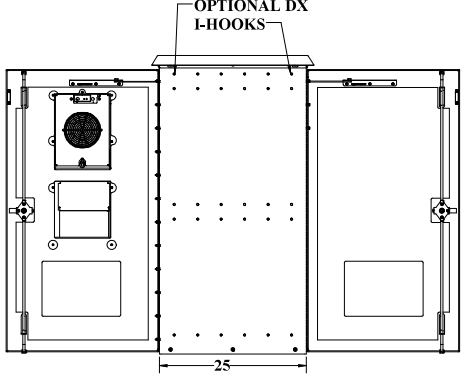
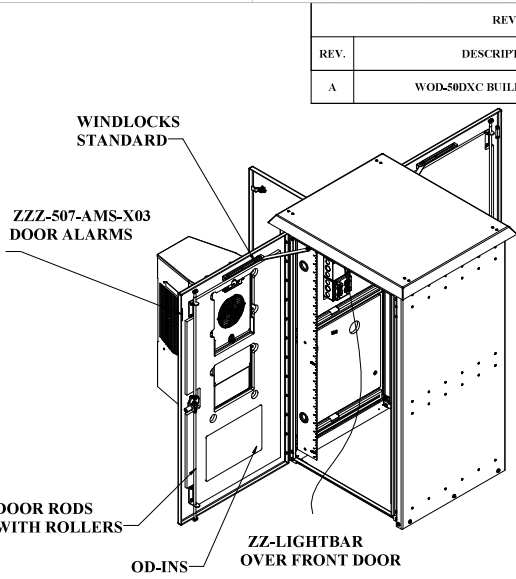
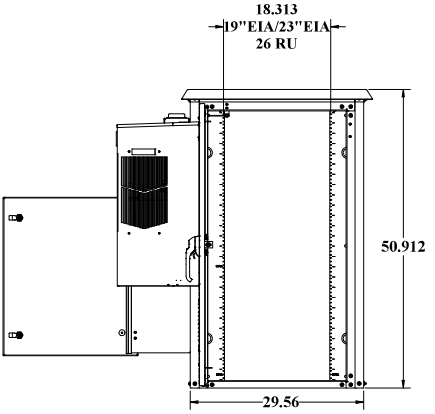
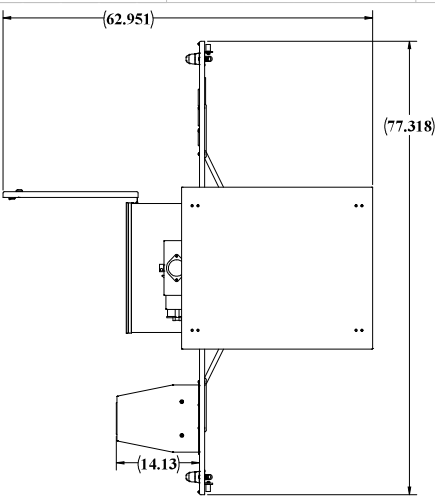
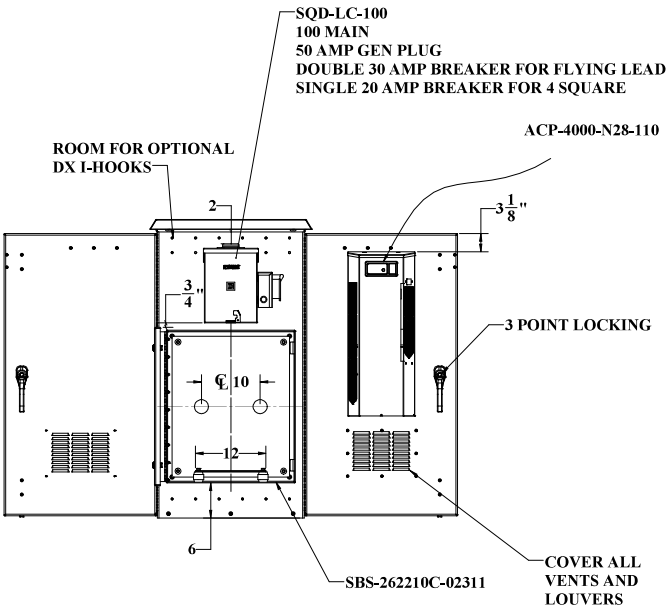


2301 S. HWY 77 Pauls Valley, OK 73075

T: (800) 753-8459 – F: (877) 220-7236

sales@ddbunlimited.com www.ddbunlimited.com

WEB DRAWING (NOT FOR FABRICATION)



WEB DRAWING (NOT FOR FABRICATION)

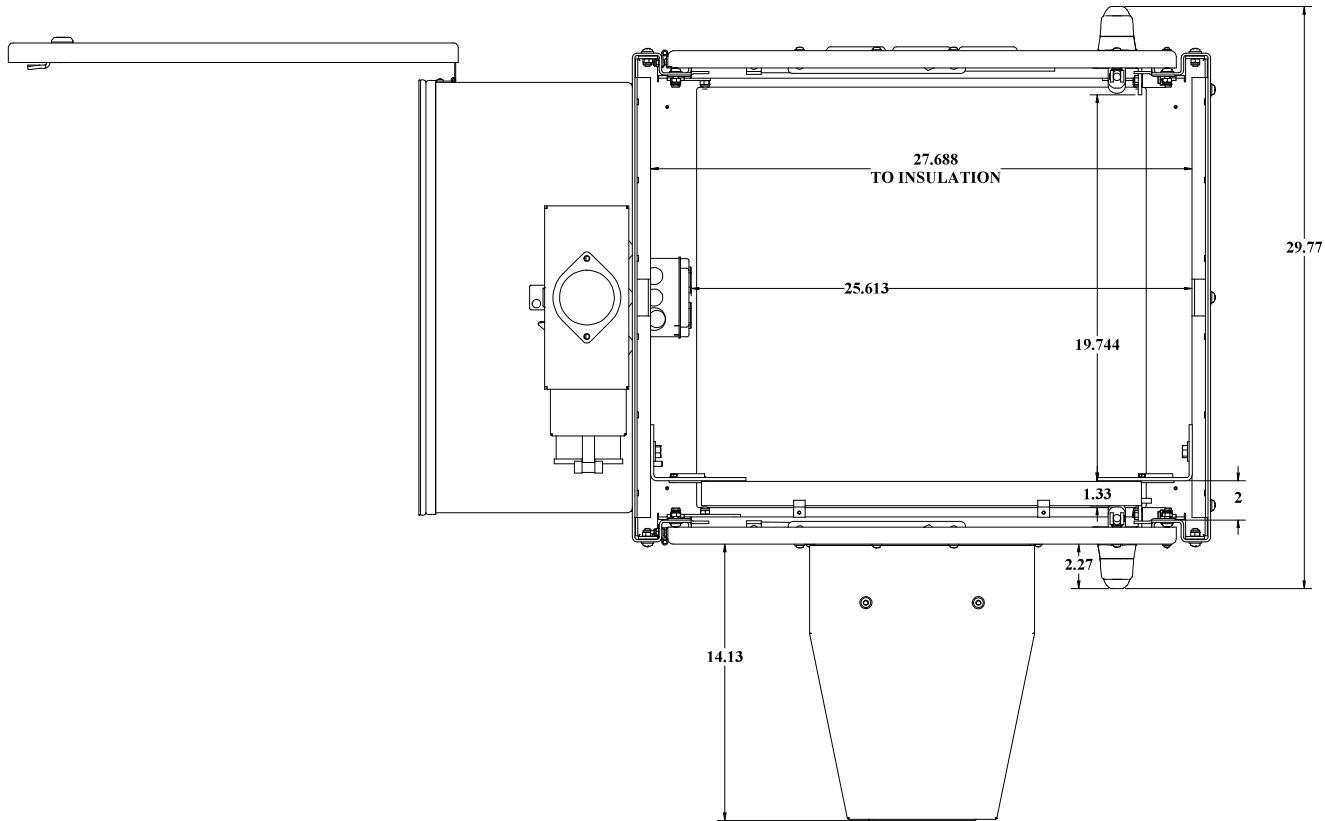
NEMA TYPE 4				IN-HOUSE					
UNLESS OTHERWISE SPECIFIED:				DDb Unlimited Inc.					
DIMENSIONS ARE IN INCHES				Model No.	DATE	SHEET MICRO			
DRAWN BY: MARCUS				Model No.	DATE	WOD-50DXC-110A128			
CHECKED BY: MARCUS				Q.A. Appr.	DATE	02322			
DESIGNED BY: MARCUS				Prod. Mgr.	DATE	A			
MATERIAL: 6061-T6 ALUMINUM				SCALE: 1:20 WEIGHT: 283 lbs.					
FINISH: ANODIZED ALUMINUM				SHEET 1 OF 3					
DO NOT SCALE DRAWING									

BUILD ASSEMBLY MADE FROM WOD-50DXC

UNCLASSIFIED PUBLIC

File Location: (DDb) (PDM) Vault
C:\DDb\Drawing Requests\Customers\DDb WEB DWG\LITE\Fam\WOD-50DXC-MICRO\

WEB DRAWING (NOT FOR FABRICATION)



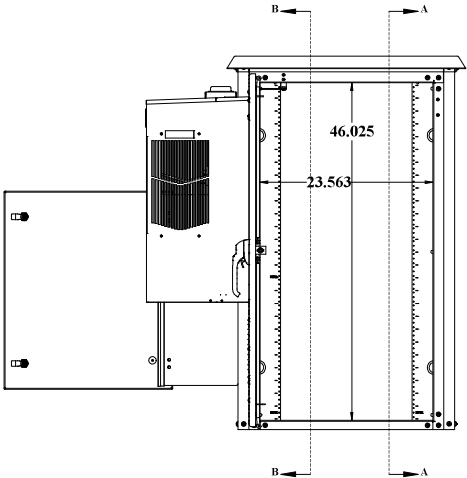
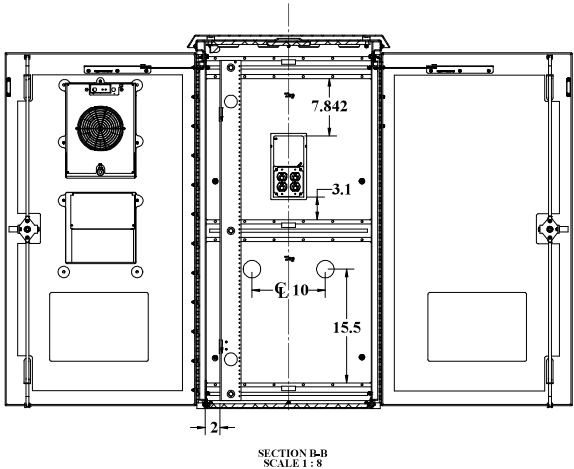
WEB DRAWING (NOT FOR FABRICATION)

UNLESS OTHERWISE SPECIFIED:				NAME		DATE		DDB Unlimited Inc.			
DIMENSIONS ARE IN INCHES				Model No.	1000			SG-LITE-MICRO			
PARTS LIST				Drawn By:	Marcel		06/05/20	W/O-SKID-LID-A125			
ALL DIMENSIONS ARE IN INCHES				Sales Rep/Rev	Complete						
MATERIAL: 100% POLYESTER 100% POLYESTER 100% POLYESTER				Q.A. Appr.	100		06/08/20	SITE	Cage Code:	DWG. NO.:	REV
PAINT: MARINE GRADE WHITE				Prod. Mgr.	Chad		06/08/20	D	88515	02322	A
DO NOT SCALE DRAWING				Checked/Revised:				SCALE: 1:20 WEIGHT:			

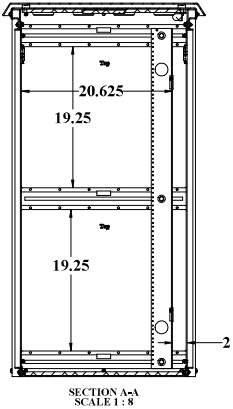
UNCLASSIFIED PUBLIC

File Location: (DDB) (PDM Vault)
C:\DDB\Drawing Request\Customers\DDB WEB DWG\LITE-Fam\5G-LITE-MICRO\

WEB DRAWING (NOT FOR FABRICATION)



3/8" DOOR BULB GASKET
IS NOT SHOWN IN THIS
VIEW



WEB DRAWING (NOT FOR FABRICATION)

UNLESS OTHERWISE SPECIFIED:		NAME	DATE	DDB Unlimited Inc.			
DIMENSIONS ARE IN INCHES		Model No.	0208	TGL-TE-MICRO			
PARTICULARS		Drawn By:	Marcel	W/O-X/DX-L/DN-128			
DRAWING SCALE		Q.A. Appr:	tray	02322			
MATERIAL: 100% POLYESTER SATIN FINISH		Prod.Mgr:	Chad	A			
PAINT: BAKKING ENAMEL		Scale	1:20	WEIGHT: 1			
DO NOT SCALE DRAWING		Sheet Number	3	SHEET 3 OF 3			

UNCLASSIFIED PUBLIC

File Location: (DDB) (PDM Vault)
C:\DDB\Drawing Request\Customers\DDB WEB DWG\LITE-Fam\TGL-TE-MICRO\

DDB FORM 7-1-2 REV F 05/02/19