



An ISO 9001
Certified company

WOD Series

WOD-16DXC



Why Choose the WOD Series?

The WOD series of enclosures are the ultimate choice for your outdoor racking requirements. Being made of our own rugged Alumiflex®, you'll find it noticeably lighter than steel, yet strong enough to rack even the heaviest equipment. When choosing the WOD series, you have handpicked the highest value in American construction. The WOD-16DXC includes the standard features you have come to expect with DDB, incorporating the versatile strut system for adjustable racking, the security of a 3-point locking system and our patented Alumishield® solar cap to manage heat loads. For those who need more than just our standard enclosure, DDB can also make a truly customized solution with our many available options including HVAC, providing a climate-controlled environment for any electronic equipment, electrical load panels and cable entry solutions to name a few. All of this comes together to create an enclosure able to meet all of the unique needs your customers have been seeking. DDB offers a state-of-the-art design, a competitive price, benchmark lead times and a guaranteed delivery, all backed up with an industry leading 15-year warranty on every enclosure. Put DDB's substantial stock to work for you today. Contact our professional staff to assist you with your made-to-order solution.



Features

- 0.125" Aluminum Construction
- Stainless Steel External Hardware/Hinge
- 3 Point Lock System
- Heavy Duty Out-Door Construction
- Front and Rear Access
- Custom Colors Available
- Cream & Red Powder-Coat in Stock
- Flexible and Scalable
- 15 Year Warranty
- Quick Shipping

Application Types

- Telecommunications
- Wireless/Broadband
- Fiber Optics
- Back Haul
- Small Cell/DAS
- Public Safety
- Utility
- Base Station
- Military
- Trailer-Based Communications
- Wi-Fi
- LTEE/4G/5G



Industry Standards:

- NEMA 3R as shown
- NEMA 4 and 4X configurable (unlisted to environmental rating)
- WOD Series Listed to UL 50/50E Type 4 Available**
- ETL listed to UL Standard 60950-1/CSA 22.2C

2301 S. HWY 77 Pauls Valley, OK 73075

T: (800) 753-8459 – F: (877) 220-7236

sales@ddbunlimited.com www.ddbunlimited.com

Weight and Dimensions

Approximate Exterior Enclosure Dimensions:

18"H x 32"W x 30"D

Shipping Dimensions:

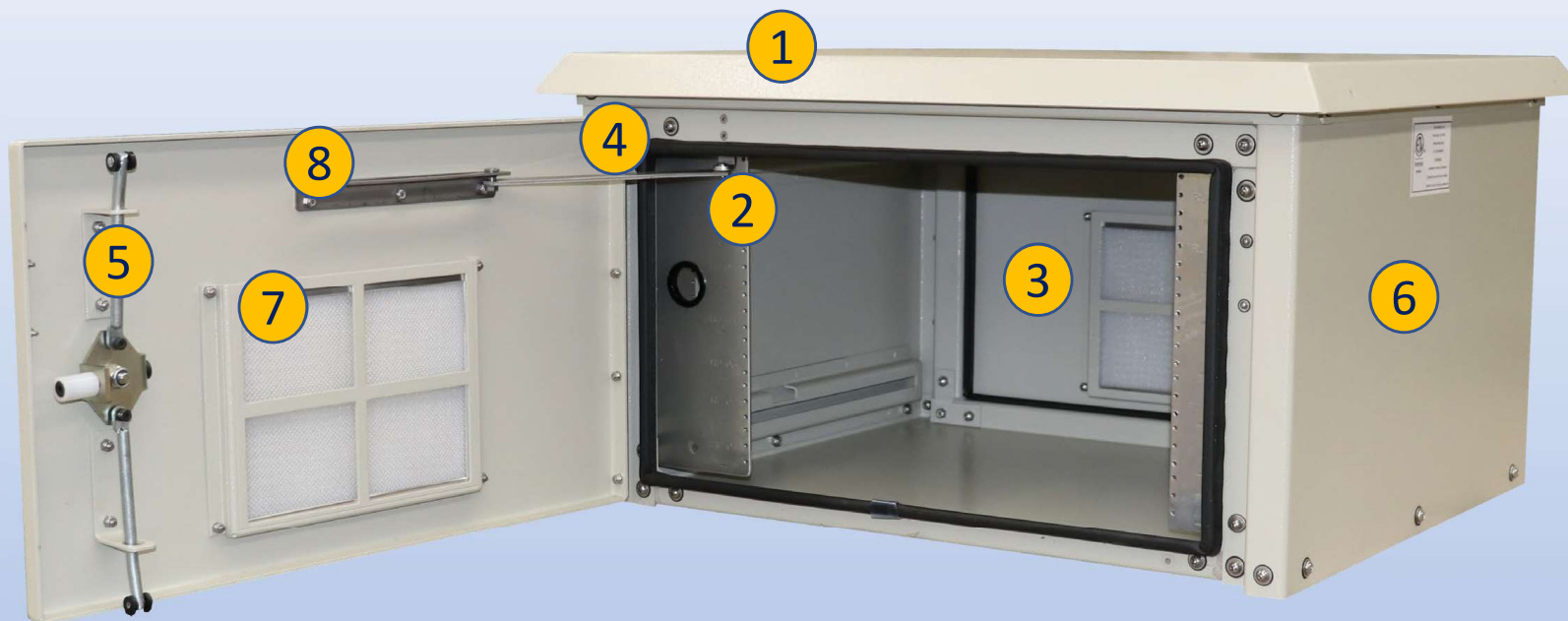
42"W x 40"L - Palletized

Approximate Shipping Weight:

130 lbs.

WOD Series

WOD-16DXC



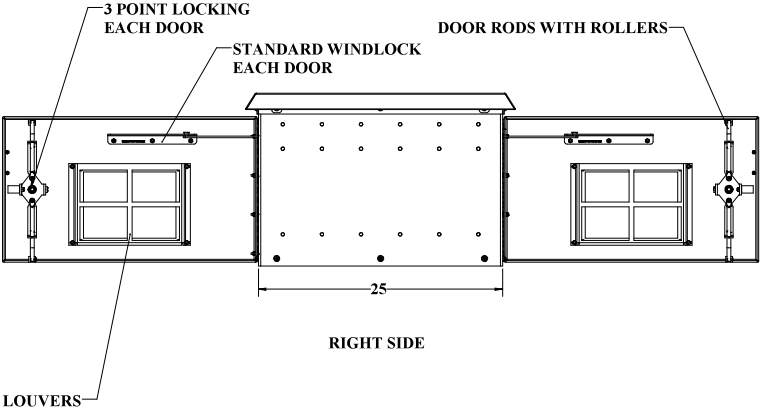
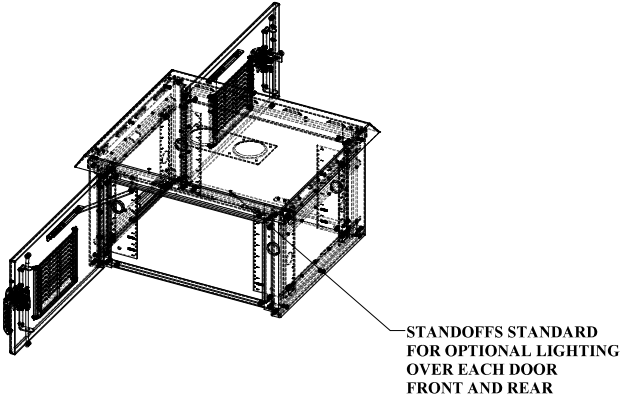
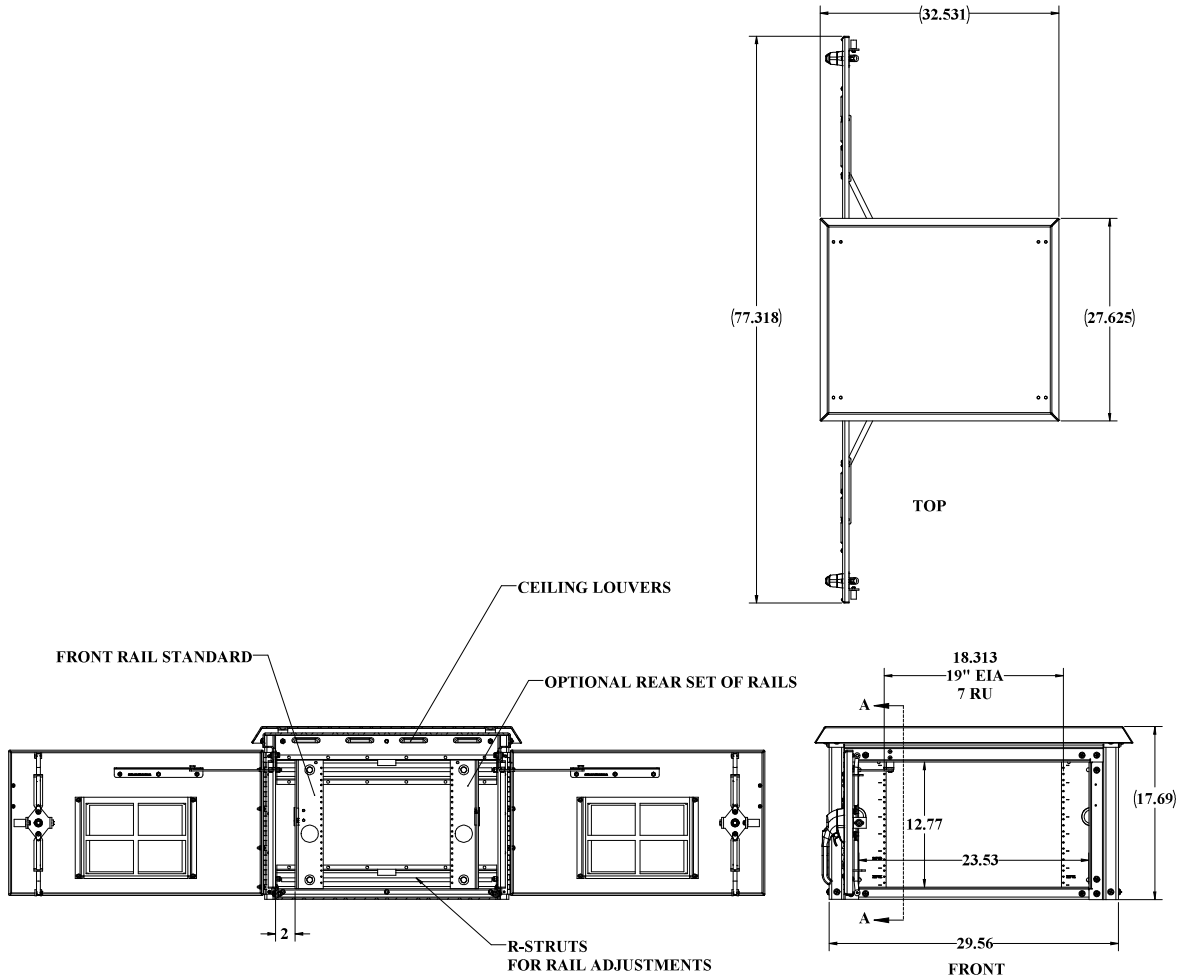
Features

1. Solar Shield (Alumishield)
2. 19" and 23" Reversible Racking Rails
3. Rear Access Door
4. Stainless Steel Door Hinge
5. 3 Point Locking System
6. Powder-Coat Cream
7. Reusable Vent Filters
8. Automatic Wind-Lock

2301 S. HWY 77 Pauls Valley, OK 73075
T: (800) 753-8459 – F: (877) 220-7236
sales@ddbunlimited.com www.ddbunlimited.com

WEB DRAWING (NOT FOR FABRICATION)

REVISIONS		
REV.	DESCRIPTION	DATE
A	Initial Web Drawing per DR-00134	6/10/2013
B	revise to incorporate new components and new drawing template pdr DR-00904	5/12/2014
C	UPDATED FORMAT PER DR-01937	3/12/2019
D	UPDATED DRAWING WITH DOOR RODS WITH ROLLERS PER DR-02265	4/21/2020



WEB DRAWING (NOT FOR FABRICATION)

UNLESS OTHERWISE SPECIFIED:		NAME	DATE	DDB Unlimited Inc.			
DIMENSIONS ARE IN INCHES		Model by	DGB	WOD-XXXX			
PARTS LIST		Drawn by	seene	WOD, 16TH, DX			
FOR FABRICATION		Sales/Rep	on Campus	WOD-25.13			
FOR FABRICATION		Q/A Appr.	yes	WOD-10TH, DX			
FOR FABRICATION		Prod. Mgr.	ChadK	WOD-10TH, DX			
FOR FABRICATION		Control		WOD-10TH, DX			
FOR FABRICATION				WOD-10TH, DX			
FOR FABRICATION				WOD-10TH, DX			
FOR FABRICATION				WOD-10TH, DX			
FOR FABRICATION				WOD-10TH, DX			
FOR FABRICATION				WOD-10TH, DX			
FOR FABRICATION				WOD-10TH, DX			
FOR FABRICATION				WOD-10TH, DX			
FOR FABRICATION				WOD-10TH, DX			
FOR FABRICATION				WOD-10TH, DX			
FOR FABRICATION				WOD-10TH, DX			
FOR FABRICATION				WOD-10TH, DX			
FOR FABRICATION				WOD-10TH, DX			
FOR FABRICATION				WOD-10TH, DX			
FOR FABRICATION				WOD-10TH, DX			
FOR FABRICATION				WOD-10TH, DX			
FOR FABRICATION				WOD-10TH, DX			
FOR FABRICATION				WOD-10TH, DX			
FOR FABRICATION				WOD-10TH, DX			
FOR FABRICATION				WOD-10TH, DX			
FOR FABRICATION				WOD-10TH, DX			
FOR FABRICATION				WOD-10TH, DX			
FOR FABRICATION				WOD-10TH, DX			
FOR FABRICATION				WOD-10TH, DX			
FOR FABRICATION				WOD-10TH, DX			
FOR FABRICATION				WOD-10TH, DX			
FOR FABRICATION				WOD-10TH, DX			
FOR FABRICATION				WOD-10TH, DX			
FOR FABRICATION				WOD-10TH, DX			
FOR FABRICATION				WOD-10TH, DX			
FOR FABRICATION				WOD-10TH, DX			
FOR FABRICATION				WOD-10TH, DX			
FOR FABRICATION				WOD-10TH, DX			
FOR FABRICATION				WOD-10TH, DX			
FOR FABRICATION				WOD-10TH, DX			
FOR FABRICATION				WOD-10TH, DX			
FOR FABRICATION				WOD-10TH, DX			
FOR FABRICATION				WOD-10TH, DX			
FOR FABRICATION				WOD-10TH, DX			
FOR FABRICATION				WOD-10TH, DX			
FOR FABRICATION				WOD-10TH, DX			
FOR FABRICATION				WOD-10TH, DX			
FOR FABRICATION				WOD-10TH, DX			
FOR FABRICATION				WOD-10TH, DX			
FOR FABRICATION				WOD-10TH, DX			
FOR FABRICATION				WOD-10TH, DX			
FOR FABRICATION				WOD-10TH, DX			
FOR FABRICATION				WOD-10TH, DX			
FOR FABRICATION				WOD-10TH, DX			
FOR FABRICATION				WOD-10TH, DX			
FOR FABRICATION				WOD-10TH, DX			
FOR FABRICATION				WOD-10TH, DX			
FOR FABRICATION				WOD-10TH, DX			
FOR FABRICATION				WOD-10TH, DX			
FOR FABRICATION				WOD-10TH, DX			
FOR FABRICATION				WOD-10TH, DX			
FOR FABRICATION				WOD-10TH, DX			
FOR FABRICATION				WOD-10TH, DX			
FOR FABRICATION				WOD-10TH, DX			
FOR FABRICATION				WOD-10TH, DX			
FOR FABRICATION				WOD-10TH, DX			
FOR FABRICATION				WOD-10TH, DX			
FOR FABRICATION				WOD-10TH, DX			
FOR FABRICATION				WOD-10TH, DX			
FOR FABRICATION				WOD-10TH, DX			
FOR FABRICATION				WOD-10TH, DX			
FOR FABRICATION				WOD-10TH, DX			
FOR FABRICATION				WOD-10TH, DX			
FOR FABRICATION				WOD-10TH, DX			
FOR FABRICATION				WOD-10TH, DX			
FOR FABRICATION				WOD-10TH, DX			
FOR FABRICATION				WOD-10TH, DX			
FOR FABRICATION				WOD-10TH, DX			
FOR FABRICATION				WOD-10TH, DX			
FOR FABRICATION				WOD-10TH, DX			
FOR FABRICATION				WOD-10TH, DX			
FOR FABRICATION				WOD-10TH, DX			
FOR FABRICATION				WOD-10TH, DX			
FOR FABRICATION				WOD-10TH, DX			
FOR FABRICATION				WOD-10TH, DX			
FOR FABRICATION				WOD-10TH, DX			
FOR FABRICATION				WOD-10TH, DX			
FOR FABRICATION				WOD-10TH, DX			
FOR FABRICATION				WOD-10TH, DX			
FOR FABRICATION				WOD-10TH, DX			
FOR FABRICATION				WOD-10TH, DX			
FOR FABRICATION				WOD-10TH, DX			
FOR FABRICATION				WOD-10TH, DX			
FOR FABRICATION				WOD-10TH, DX			
FOR FABRICATION				WOD-10TH, DX			
FOR FABRICATION				WOD-10TH, DX			
FOR FABRICATION				WOD-10TH, DX			
FOR FABRICATION				WOD-10TH, DX			
FOR FABRICATION				WOD-10TH, DX			
FOR FABRICATION				WOD-10TH, DX			
FOR FABRICATION				WOD-10TH, DX			
FOR FABRICATION				WOD-10TH, DX			
FOR FABRICATION				WOD-10TH, DX			
FOR FABRICATION				WOD-10TH, DX			
FOR FABRICATION				WOD-10TH, DX			
FOR FABRICATION				WOD-10TH, DX			
FOR FABRICATION				WOD-10TH, DX			
FOR FABRICATION				WOD-10TH, DX			
FOR FABRICATION				WOD-10TH, DX			
FOR FABRICATION				WOD-10TH, DX			
FOR FABRICATION				WOD-10TH, DX			
FOR FABRICATION				WOD-10TH, DX			
FOR FABRICATION				WOD-10TH, DX			
FOR FABRICATION				WOD-10TH, DX			
FOR FABRICATION				WOD-10TH, DX			
FOR FABRICATION				WOD-10TH, DX			
FOR FABRICATION				WOD-10TH, DX			
FOR FABRICATION				WOD-10TH, DX			
FOR FABRICATION				WOD-10TH, DX			
FOR FABRICATION				WOD-10TH, DX			
FOR FABRICATION				WOD-10TH, DX			
FOR FABRICATION				WOD-10TH, DX			
FOR FABRICATION				WOD-10TH, DX			
FOR FABRICATION				WOD-10TH, DX			
FOR FABRICATION				WOD-10TH, DX			
FOR FABRICATION				WOD-10TH, DX			

4X $\phi \frac{5}{32}$ "
ETCHINGS

— **£ 26**
FLOOR ETCHINGS

20.74

18.75
RAIL FACE
TO RAIL FACE

19 $\frac{1}{2}$ "
FLOOR
ETCHINGS

 $29\frac{3}{4}"$

27 $\frac{3}{4}$ "
— R-STRUT
TO R-STRUT

$$(2.27)$$

WEB DRAWING (NOT FOR FABRICATION)

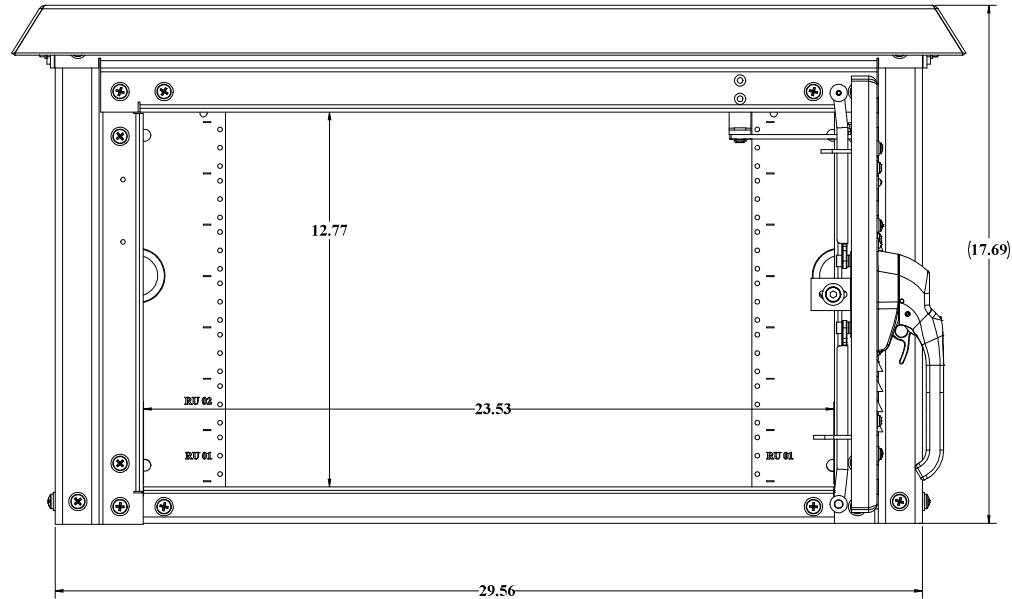
UNLESS OTHERWISE SPECIFIED:		DDB Unlimited Inc. DX Closed Enclosure, Family, WOD DX Closed			
DIMENSIONS ARE IN INCHES ANGULAR PER FORNAL NO. DECIMAL ONE PLACE DECIMAL TWO PLACE DECIMAL THREE PLACE DECIMAL ALL HOLEY PEGS		1" = 1'-0" 1/8" = 1'-0" 1/16" = 1'-0" 1/32" = 1'-0" 1/64" = 1'-0" 1/128" = 1'-0" 1/256" = 1'-0" 1/512" = 1'-0" 1/1024" = 1'-0" 1/2048" = 1'-0" 1/4096" = 1'-0" 1/8192" = 1'-0" 1/16384" = 1'-0" 1/32768" = 1'-0" 1/65536" = 1'-0" 1/131072" = 1'-0" 1/262144" = 1'-0" 1/524288" = 1'-0" 1/1048576" = 1'-0" 1/2097152" = 1'-0" 1/4194304" = 1'-0" 1/8388608" = 1'-0" 1/16777216" = 1'-0" 1/33554432" = 1'-0" 1/67108864" = 1'-0" 1/134217728" = 1'-0" 1/268435456" = 1'-0" 1/536870912" = 1'-0" 1/1073741824" = 1'-0" 1/2147483648" = 1'-0" 1/4294967296" = 1'-0" 1/8589934592" = 1'-0" 1/17179869184" = 1'-0" 1/34359738368" = 1'-0" 1/68719476736" = 1'-0" 1/137438953472" = 1'-0" 1/274877906944" = 1'-0" 1/549755813888" = 1'-0" 1/1099511627776" = 1'-0" 1/2199023255552" = 1'-0" 1/4398046511104" = 1'-0" 1/8796093022208" = 1'-0" 1/17592186044416" = 1'-0" 1/35184372088832" = 1'-0" 1/70368744177664" = 1'-0" 1/140737488355328" = 1'-0" 1/281474976710656" = 1'-0" 1/562949953421312" = 1'-0" 1/1125899906842624" = 1'-0" 1/2251799813685248" = 1'-0" 1/4503599627370496" = 1'-0" 1/9007199254740992" = 1'-0" 1/18014398509481984" = 1'-0" 1/36028797018963968" = 1'-0" 1/72057594037927936" = 1'-0" 1/144115188075855872" = 1'-0" 1/288230376151711744" = 1'-0" 1/576460752303423488" = 1'-0" 1/1152921504606846976" = 1'-0" 1/2305843009213693952" = 1'-0" 1/4611686018427387904" = 1'-0" 1/9223372036854775808" = 1'-0" 1/18446744073709551616" = 1'-0" 1/36893488147419103232" = 1'-0" 1/73786976294838206464" = 1'-0" 1/147573952589676412928" = 1'-0" 1/295147905179352825856" = 1'-0" 1/590295810358705651712" = 1'-0" 1/1180591620717411303424" = 1'-0" 1/2361183241434822606848" = 1'-0" 1/4722366482869645213696" = 1'-0" 1/9444732965739290427392" = 1'-0" 1/18889465931478580854784" = 1'-0" 1/37778931862957161709568" = 1'-0" 1/75557863725914323419136" = 1'-0" 1/151115727451828646838272" = 1'-0" 1/302231454903657293676544" = 1'-0" 1/604462909807314587353088" = 1'-0" 1/1208925819614629174706176" = 1'-0" 1/2417851639229258349412352" = 1'-0" 1/4835703278458516698824704" = 1'-0" 1/9671406556917033397649408" = 1'-0" 1/19342813113834066795298816" = 1'-0" 1/38685626227668133590597632" = 1'-0" 1/77371252455336267181195264" = 1'-0" 1/154742504910672534362390528" = 1'-0" 1/309485009821345068724781056" = 1'-0" 1/618970019642690137449562112" = 1'-0" 1/1237940039285380274899124224" = 1'-0" 1/2475880078570760549798248448" = 1'-0" 1/4951760157141521099596496896" = 1'-0" 1/9903520314283042199192993792" = 1'-0" 1/19807040628566084398385987584" = 1'-0" 1/39614081257132168796771975168" = 1'-0" 1/79228162514264337593543950336" = 1'-0" 1/158456325028528675187087900672" = 1'-0" 1/316912650057057350374175801344" = 1'-0" 1/633825300114114700748351602688" = 1'-0" 1/1267650600228229401496703205376" = 1'-0" 1/2535301200456458802993406410752" = 1'-0" 1/5070602400912917605986812821504" = 1'-0" 1/10141204801825835211973625643008" = 1'-0" 1/20282409603651670423947251286016" = 1'-0" 1/40564819207303340847894502572032" = 1'-0" 1/81129638414606681695789005144064" = 1'-0" 1/162259276829213363391778010288128" = 1'-0" 1/324518553658426726783556020576256" = 1'-0" 1/649037107316853453567112041152512" = 1'-0" 1/1298074214633706907134224082305024" = 1'-0" 1/2596148429267413814268448164610048" = 1'-0" 1/5192296858534827628536896329220096" = 1'-0" 1/10384593717069655257073792658440192" = 1'-0" 1/20769187434139310514147585316880384" = 1'-0" 1/41538374868278621028295170633760768" = 1'-0" 1/83076749736557242056590341267521536" = 1'-0" 1/166153499473114484113180682535042688" = 1'-0" 1/332306998946228968226361365070085376" = 1'-0" 1/664613997892457936452722730140170752" = 1'-0" 1/132922799578491587290544546028034112" = 1'-0" 1/265845599156983174581089092056068224			

UNCLASSIFIED PUBLIC
THE INFORMATION CONTAINED IN THIS DRAWING IS THE SOLE PROPERTY OF DDB Unlimited, INC. ANY
REPRODUCTION IN PART OR AS A WHOLE WITHOUT THE WRITTEN PERMISSION OF DDB Unlimited, INC. IS PROHIBITED.

File Location: (DD8) (EPDM Vault:)
C:\DD8\Drawing Requests\Customers\DD8 WEB DWG\WOD Family\WEB\DR-00134 (WOD-16DX

DDB FORM: 7.1-2 REV:K 08/02/17

WEB DRAWING (NOT FOR FABRICATION)



**BACK VIEW
GASKET NOT SHOWN**

WEB DRAWING (NOT FOR FABRICATION)

UNLESS OTHERWISE SPECIFIED:		DDB Unlimited Inc. WOD-16DX WOD, 16", DX	
DIMENSIONS ARE IN POUNDS ANGULAR RECTANGULAR NO. DECIMAL OR FLAT PLATE DECIMAL TWO PLACE DECIMAL THREE PLACE DECIMAL ALL BOLTS PLATE	1" = #10 #1005 #1006 #1007	SIZE Cage Code: DWG. NO.: REV	D 385Y 00134 D
MATERIAL: 6063AL321N-235 1/4"X36"X309H PAINT: EPOXY/FLUOR POLYMER/FLUOR POLYMER/PT-4030		SCALE: 1:8 SHEET 3 OF 3	SHEET 3 OF 3

UNCLASSIFIED PUBLIC

THE INFORMATION CONTAINED IN THIS DRAWING IS THE SOLE PROPERTY OF DDB Unlimited, INC. ANY REPRODUCTION IN PART OR AS A WHOLE WITHOUT THE WRITTEN PERMISSION OF DDB Unlimited, INC. IS PROHIBITED.

File Location: (DD8) (EPDM Vault:)
C:\DD8\Drawing Requests\Customers\DD8 WEB DWG\WOD Family\WEB\DR-00134 (WOD-16DX