



An ISO 9001/27001  
Certified company

# OD-UL Series

## OD-30DXC-UL50

Made in America



Believing in American  
Craftsmanship



## Why Choose the OD-UL Series?

The OD-UL series of enclosures are the ultimate choice for your outdoor racking requirements. Being made of our own rugged Alumiflex®, you'll find it noticeably lighter than steel, yet strong enough to rack even the heaviest equipment. When choosing the OD-UL series, you have handpicked the highest value in American construction. The OD-UL series includes the standard features you have come to expect with DDB, incorporating the versatile strut system for adjustable racking, the security of a 3- point locking system, our patented Alumishield® solar cap to manage heat loads, UL listed grounding straps, & UL listed gasketing. For those who need more than just our standard enclosure, DDB can also make a truly customized solution with our many available options including HVAC, providing a climate-controlled environment for any electronic equipment, electrical load panels and cable entry solutions to name a few. All of this comes together to create an enclosure able to meet all of the unique needs your customers have been seeking. DDB offers a state-of-the-art design, a competitive price, benchmark lead times and a guaranteed delivery, all backed up with an industry leading 15-year warranty on every enclosure. Put DDB's substantial stock to work for you today. Contact our professional staff to assist you with your made-to-order solution.

## Application Types

- Telecommunications
- Wireless/Broadband
- Fiber Optics
- Back Haul
- Small Cell/DAS
- Public Safety
- Utility
- Base Station
- Military
- Trailer-Based Communications
- Wi-Fi
- LTEE/4G/5G



## Industry Standards:

**OD Series Listed to UL 50/50E Type 4**  
ETL listed to UL Standard 60950-1/CSA 22.2C

2301 S. HWY 77 Pauls Valley, OK 73075

T: (800) 753-8459 – F: (877) 220-7236

[sales@ddbunlimited.com](mailto:sales@ddbunlimited.com) [www.ddbunlimited.com](http://www.ddbunlimited.com)



## Features

- 0.125" Aluminum Construction
- Stainless Steel External Hardware/Hinge
- Fully Welded Construction
- 3 Point Lock System
- Front and Rear Access
- Custom Colors Available
- Cream Powder-Coat in Stock
- Flexible and Scalable
- 15 Year Warranty
- Quick Shipping
- Water/Rain/Sleet/Dust Tight

## Weight and Dimensions

Approximate Exterior Enclosure Dimensions:

32"H x 28"W x 30"D

Shipping Dimensions:

32"W x 42"L - Palletized

Approximate Shipping Weight:

130 lbs.

# OD-UL Series

## OD-30DXC-UL50

Made in America



Believing in American  
Craftsmanship



### Features

1. Solar Shield (Alumishield)
2. 1 Set of 19" Adjustable Racking Rails
3. 15 Racking Units
4. Rear Access Door
5. 3 Point Locking System
6. Ground Strap - UL Listed
7. Frame Gasket - UL Listed

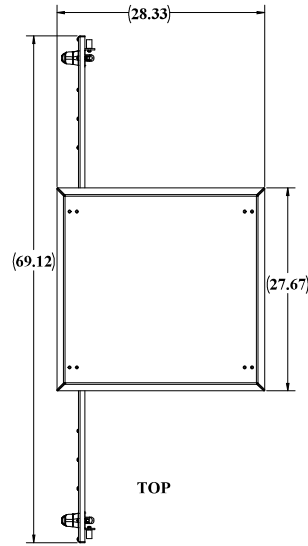
2301 S. HWY 77 Pauls Valley, OK 73075

T: (800) 753-8459 – F: (877) 220-7236

[sales@ddbunlimited.com](mailto:sales@ddbunlimited.com) [www.ddbunlimited.com](http://www.ddbunlimited.com)

WEB DRAWING (NOT FOR FABRICATION)

For Fabrication Drawing of this enclosure see DWG #:

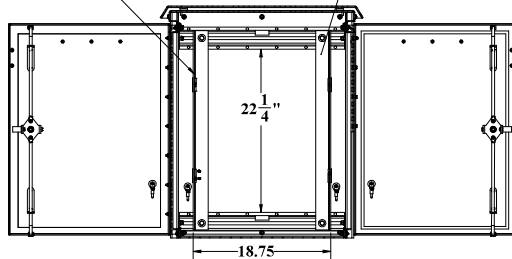


4X GROUNDING STUDS

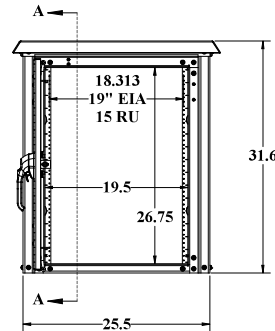
STANDOFFS STANDARD FOR OPTIONAL LIGHTING OVER EACH DOOR.

FRONT RAIL STANDARD.

REAR RAIL OPTIONAL

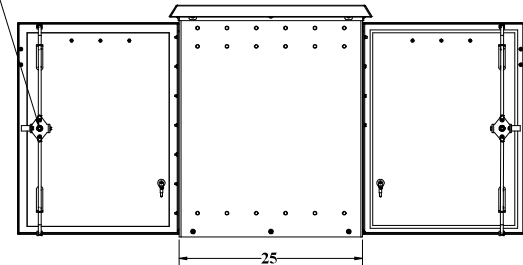


SECTION A-A



FRONT

3 POINT LOCKING EACH DOOR



RIGHT SIDE

WEB DRAWING (NOT FOR FABRICATION)

NOTES: UNLESS OTHERWISE SPECIFIED

1. DIMENSIONS AND TOLERANCES ARE IN ACCORDANCE WITH ASME Y14.5M
2. DIMENSIONS ARE IN INCHES, UNLESS OTHERWISE SPECIFIED
3. THIS IS A SUPPLEMENTAL DRAWING AND MAY NOT BE FULLY DIMENSIONED
4. THE NOTES, TOLERANCES, AND SPECIAL INSTRUCTIONS ARE TO BE USED ALONG WITH THE LATEST REVISION OF THE SOLID DATABASE. THE PART OR ASSEMBLY IS TO BE CONTROLLED PER THE ELECTRONIC FILE
5. ALL PEM STUDS SHALL BE PER FOR STAINLESS ENCLOSURES AND PHA FOR ALUMINUM
6. ALL EXTERIOR WASHERS SHALL BE SEALING WASHERS
7. THE FOLLOWING WEATHER STRIPPING SHALL BE USED FOR THE FOLLOWING APPLICATIONS:  
DOOR LIP - TRIMLOCK 3100BX18C  
FAN PLATES - STICKER-ITE 10838  
AC/S - STICKER-ITE 10834
8. CUSTOM ENCLOSURES SHALL HAVE SECURITY TORX FOR ALL EXTERIOR HARDWARE
9. SYMBOL DENOTES CRITICAL DIMENSIONS AND MUST BE INSPECTED
10. REMOVE ALL BURRS AND BEAM EDGES 0.03" MAX RADIUS OR CHAMFER
11. DO NOT DRILL OR PRESS FIT HOLES
12. DIMENSIONS SHALL APPLY AFTER ALCOYNE PAINT, FINISH, OR COAT IS APPLIED
13. INSTALL PRESS FIT STANDOFFS, STUDS, AND NUTS IN ACCORDANCE WITH THE MANUFACTURER'S SPECIFICATIONS
14. ALL OPEN HOLES SHALL BE POPULATED WITH APPLICABLE HARDWARE
15. IDENTIFY PART WITH PART NUMBER, REVISION LETTER, AND SERIAL NUMBER
16. FINISHED PART TO BE FREE OF OILS, LUBRICANTS, AND OTHER CONTAMINANTS
17. NO NYLON LOCK NUTS TO BE USED OR ANY PEM STUDS, UNLESS OTHERWISE SPECIFIED
18. ALL PEM STUDS WILL BE SECURED WITH EXTERNAL TOOTH WASHER AND STANDARD NUTS
19. TOLERANCES UNLESS OTHERWISE SPECIFIED:  
a. HOLE SIZE:  $\pm 0.010$   
b. HOLE TO HOLE:  $\pm 0.005$   
c. HOLE TO EDGE:  $\pm 0.010$   
d. HOLE TO FOLD:  $\pm 0.015$   
e. FOLD TO FOLD:  $\pm 0.020$

REVISIONS		
REV.	DESCRIPTION	DATE
A	CREATED WEBSITE DRAWING OD-30DX-UL50	9/12/2018



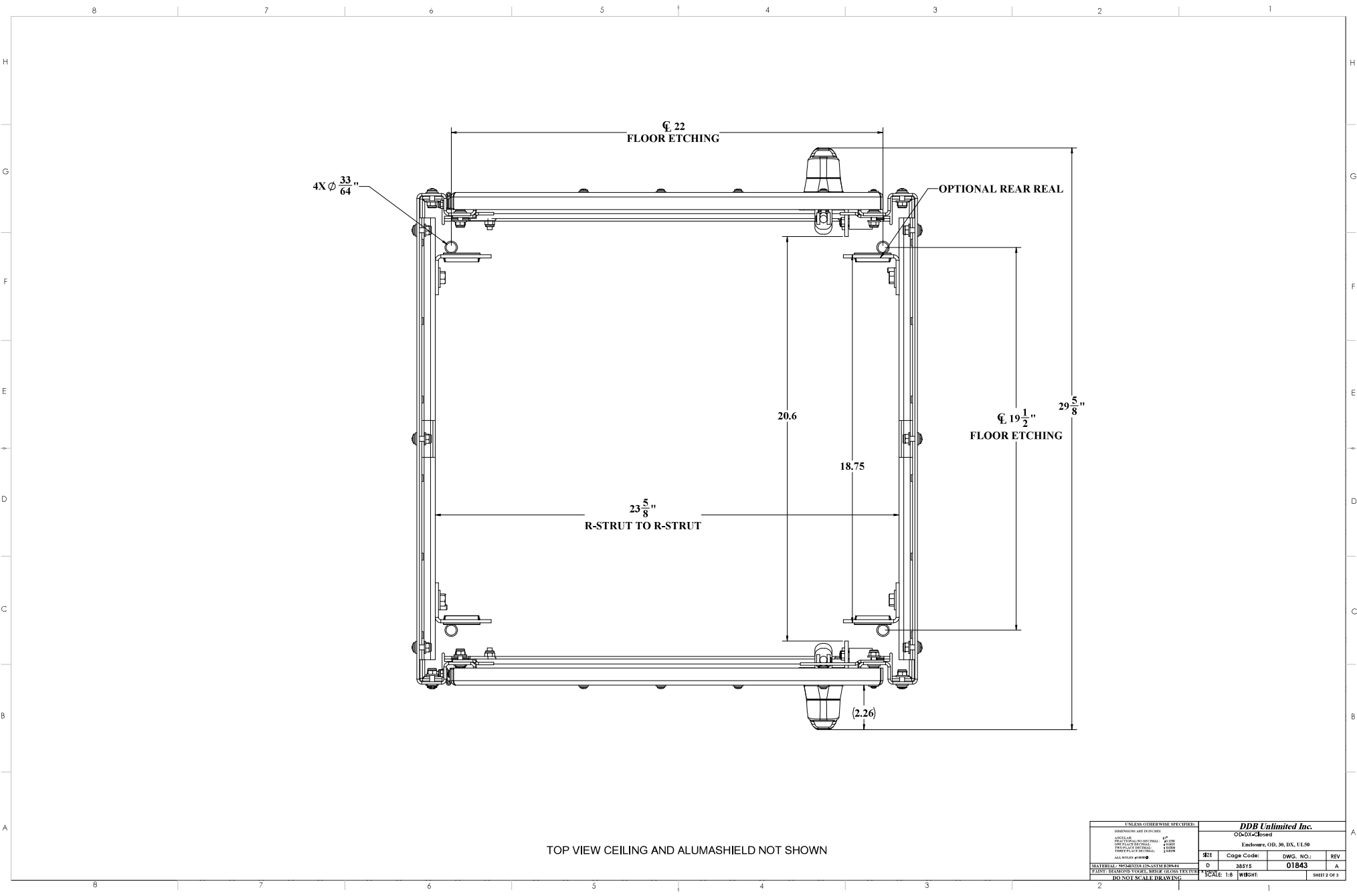
UNLESS OTHERWISE SPECIFIED:  
DIMENSIONS ARE IN INCHES  
TOLERANCES  
HOLE SIZE  
HOLE TO HOLE  
HOLE TO EDGE  
HOLE TO FOLD  
FOLD TO FOLD

Model by: JDB  
Drawn by: Marcus  
Sales Rep: [blank]  
Q.A. APP: [blank]  
MATERIAL: [blank]  
PAINT: [blank]  
DO NOT SCALE DRAWING

NAME	DATE
Model by: JDB	09/13/18
Drawn by: Marcus	09/13/18
Sales Rep: [blank]	[blank]
Q.A. APP: [blank]	09/25/18
MATERIAL: [blank]	[blank]
PAINT: [blank]	[blank]
DO NOT SCALE DRAWING	[blank]

DDB Unlimited Inc.			
OD-30DX-UL50			
Enclosure, OD, 30, DX, UL50			
SHEET	Page Code:	DWG. NO.:	REV.
D	38515	01843	A
SCALE: 1:1		WEIGHT: 86 lbs.	SHEET 1 OF 3

DDB FORM 7.1-2 REV. K (08/02/17)



UNLESS OTHERWISE SPECIFIED:		DB Unlimited Inc.	
DIMENSIONS ARE IN INCHES		OD-DX-Closed	
ANGLE	1"	Enclosure, OD, 30, DX, IL50	
DRILLING TOLERANCE	±.010	SIZE	Code Color: DWG. NO. REV
FINISH TOLERANCE	±.010		
THREAD TOLERANCE	±.010		
WELD TOLERANCE	±.010	D	385Y5 01843 A
ALL HOLES grommet		SCALE 1:8	WGHT: SHEET 2 OF 3
MATERIAL: 304/316/317/318/321/ASTM B399/44			
PAINT: DIAMOND VORTEX, REAR GLOSS FINISH			
DO NOT SCALE DRAWING			

UNLESS OTHERWISE SPECIFIED:		<b>DDB Unlimited Inc.</b>	
DIMENSIONS ARE IN INCHES		OD-30DX-U150	
ANGLE: A	1" ±	Enclosure, OD, 30, DX, U150	
PERFORATION: NO PERFORATION	0.0350		
PLATE: PLATE	0.0030		
FINISH: FINISH	0.0030		
THICKNESS: THICKNESS	0.0030		
ALL HOLE: 0.0030			
MATERIAL: 7050-41X2X125-ASTM B209-04		<b>SIZE</b>	<b>Cage Code:</b> DWG. NO.: RE
PAINT: DENSOLUX VOGEL REGR ALGON TEXTURE		<b>D</b>	<b>38515 01843</b>
FINISH: NOT REGR. REGR. ALGON TEXTURE		<b>SCALE: 1:8</b>	<b>W/817</b>
		SHEET 3 OF 4	

THE INFORMATION CONTAINED IN THIS DRAWING IS THE SOLE PROPERTY OF DDB Unlimited, INC. ANY REPRODUCTION IN PART OR AS A WHOLE WITHOUT THE WRITTEN PERMISSION OF DDB Unlimited, INC. IS PROHIBITED.