



An ISO 9001/27001  
Certified company

# OD-UL Series

## OD-30DDDC-UL50

Made in America



Believing in American  
Craftsmanship



## Why Choose the OD-UL Series?

The OD-UL series of enclosures are the ultimate choice for your outdoor racking requirements. Being made of our own rugged Alumiflex®, you'll find it noticeably lighter than steel, yet strong enough to rack even the heaviest equipment. When choosing the OD-UL series, you have handpicked the highest value in American construction. The OD-UL series includes the standard features you have come to expect with DDB, incorporating the versatile strut system for adjustable racking, the security of a 3- point locking system, our patented Alumishield® solar cap to manage heat loads, UL listed grounding straps, & UL listed gasketing. For those who need more than just our standard enclosure, DDB can also make a truly customized solution with our many available options including HVAC, providing a climate-controlled environment for any electronic equipment, electrical load panels and cable entry solutions to name a few. All of this comes together to create an enclosure able to meet all of the unique needs your customers have been seeking. DDB offers a state-of-the-art design, a competitive price, benchmark lead times and a guaranteed delivery, all backed up with an industry leading 15-year warranty on every enclosure. Put DDB's substantial stock to work for you today. Contact our professional staff to assist you with your made-to-order solution.

## Application Types

- Telecommunications
- Wireless/Broadband
- Fiber Optics
- Back Haul
- Small Cell/DAS
- Public Safety
- Utility
- Base Station
- Military
- Trailer-Based Communications
- Wi-Fi
- LTEE/4G/5G



## Industry Standards:

**OD Series Listed to UL 50/50E Type 4**  
ETL listed to UL Standard 60950-1/CSA 22.2C

2301 S. HWY 77 Pauls Valley, OK 73075  
T: (800) 753-8459 – F: (877) 220-7236  
[sales@ddbunlimited.com](mailto:sales@ddbunlimited.com) [www.ddbunlimited.com](http://www.ddbunlimited.com)



## Features

- 0.125" Aluminum Construction
- Stainless Steel External Hardware/Hinge
- Fully Welded Construction
- 3 Point Lock System
- Front and Rear Access
- Custom Colors Available
- Cream Powder-Coat in Stock
- Flexible and Scalable
- 15 Year Warranty
- Quick Shipping
- Water/Rain/Sleet/Dust Tight

## Weight and Dimensions

Approximate Exterior Enclosure Dimensions:

32"H x 28"W x 39"D

Shipping Dimensions:

35"W x 45"L - Palletized

Approximate Shipping Weight:

160 lbs.

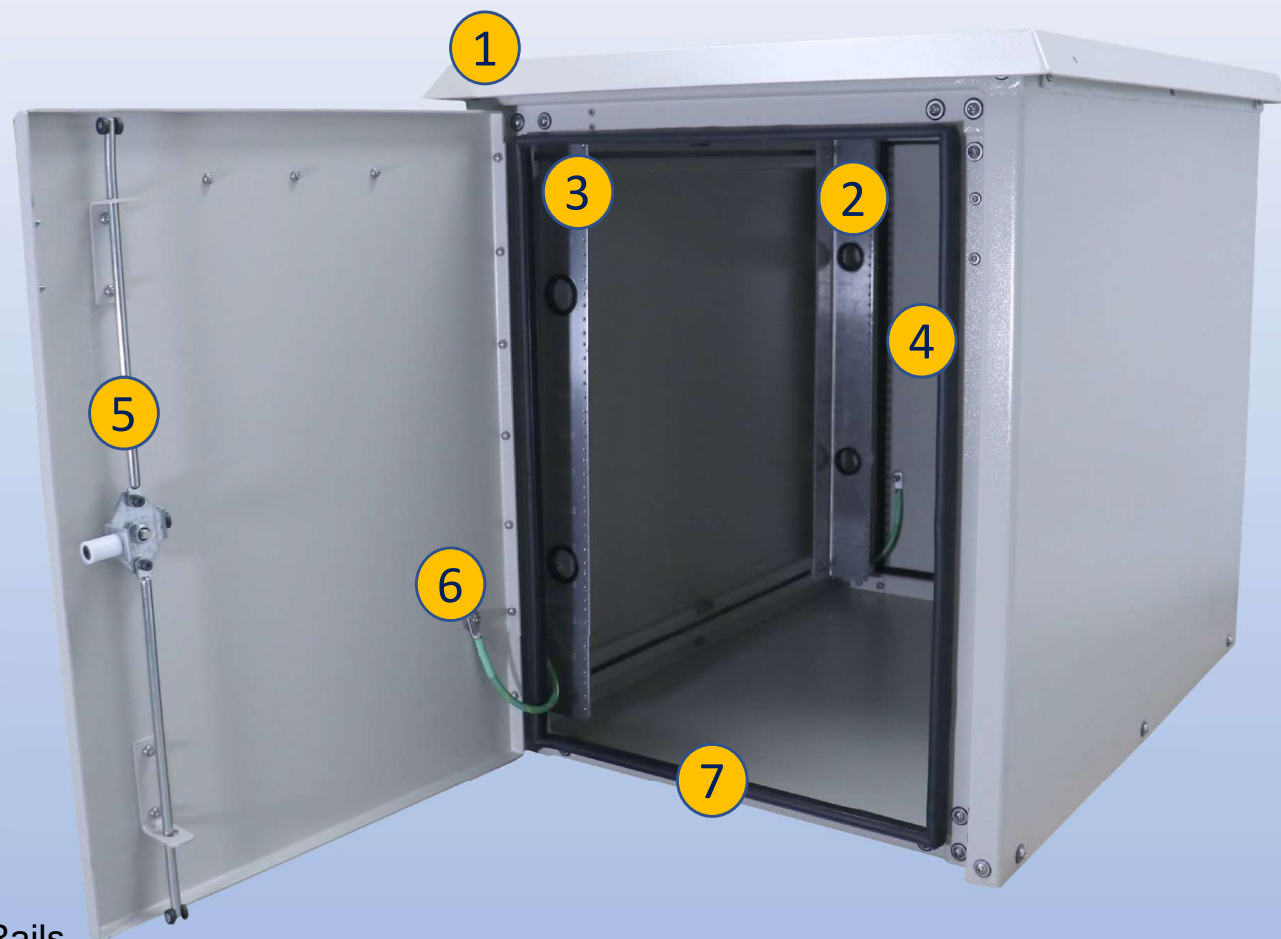
# OD-UL Series

## OD-30DDC-UL50

Made in America



Believing in American  
Craftsmanship



### Features

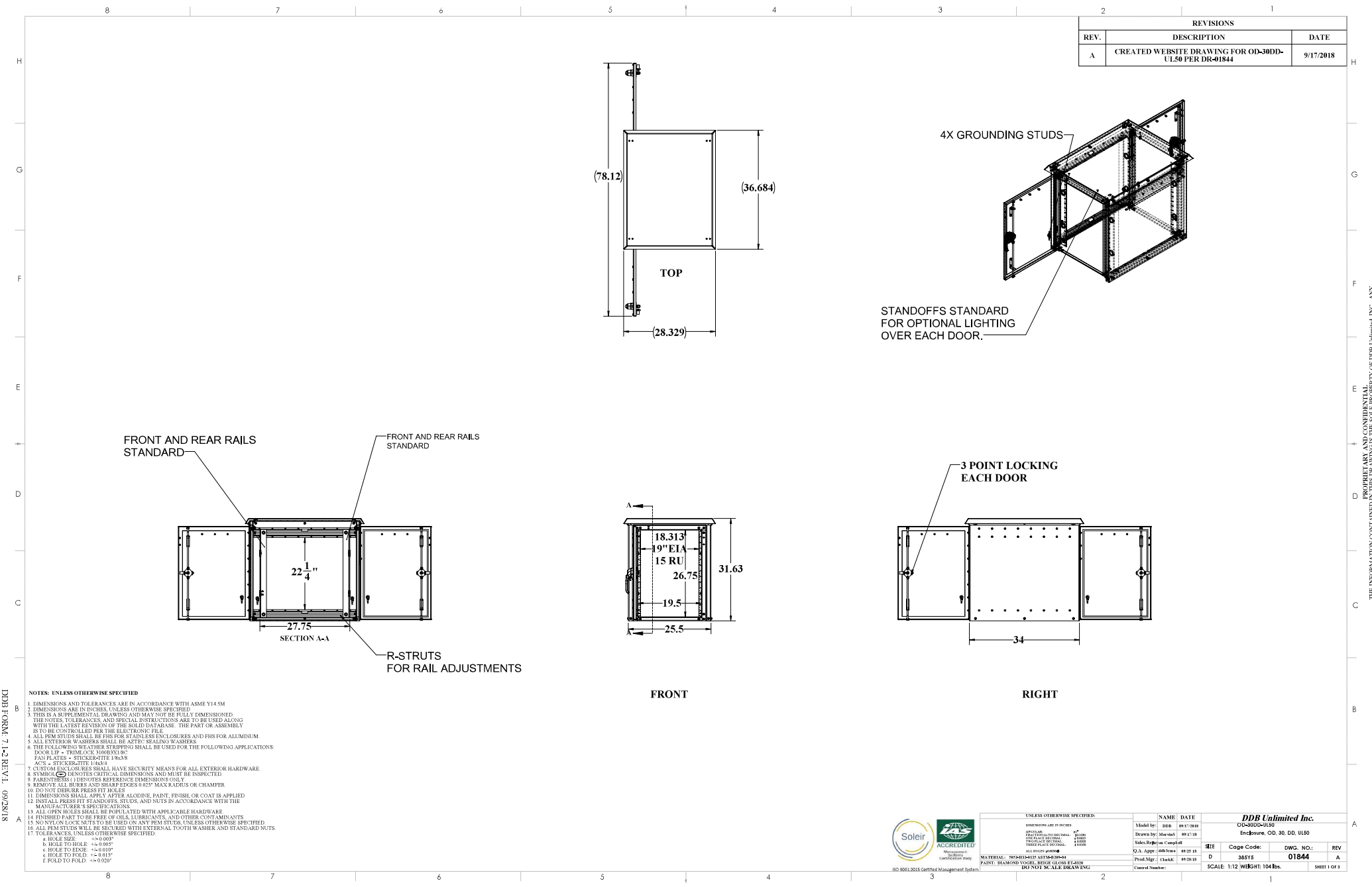
1. Solar Shield (Alumishield)
2. 2 Sets of 19" Adjustable Racking Rails
3. 15 Racking Units
4. Rear Access Door
5. 3 Point Locking System
6. Ground Strap - UL Listed
7. Frame Gasket - UL Listed

2301 S. HWY 77 Pauls Valley, OK 73075

T: (800) 753-8459 – F: (877) 220-7236

[sales@ddbunlimited.com](mailto:sales@ddbunlimited.com) [www.ddbunlimited.com](http://www.ddbunlimited.com)

DDJB FORM 7-1-2 REV 1 09/28/18



NOTES: UNLESS OTHERWISE SPECIFIED

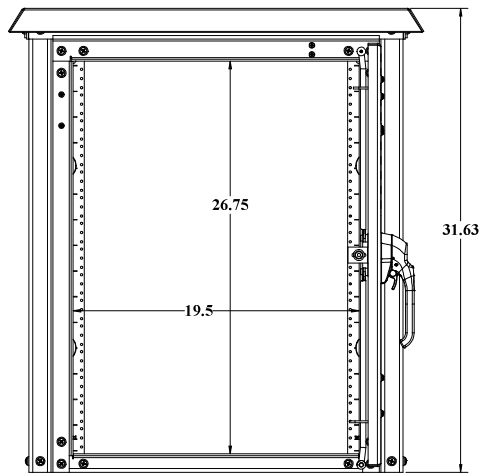
1. DIMENSIONS AND TOLERANCES ARE IN ACCORDANCE WITH ASME Y14.5M
2. DIMENSIONS ARE IN INCHES, UNLESS OTHERWISE SPECIFIED
3. THIS IS A SUPPLEMENTAL DRAWING AND MAY NOT BE FULLY DIMENSIONED
4. THE NOTES, TOLERANCES, AND SPECIAL INSTRUCTIONS ARE TO BE USED ALONG WITH THE LATEST REVISION OF THE SOLID DATABASE. THE PART OR ASSEMBLY IS TO BE CONTROLLED PER THE ELECTRONIC FILE
5. ALL PEM STUDS SHALL BE FHS FOR STAINLESS ENCLOSURES AND FHS FOR ALUMINUM
6. ALL EXTERIOR WASHERS SHALL BE A276 SEALING WASHERS
7. THE FOLLOWING WEATHER STRIPPING SHALL BE USED FOR THE FOLLOWING APPLICATIONS:  
DOOR LIP - THERMOLOCK HOBBS INC.  
FAN PLATES - STECKELTITE 10638
8. A/C'S - STICKER-TITE TACK
9. CUSTOM ENCLOSURES SHALL HAVE SECURITY MEANS FOR ALL EXTERIOR HARDWARE
10. SYMMETRY (S) DENOTES CRITICAL DIMENSIONS AND MUST BE INSPECTED
11. PARENTHESES ( ) DENOTES REFERENCE DIMENSIONS ONLY
12. REMOVE ALL BURS AND SHARP EDGES 0.025" MAX RADIUS OR CHAMFER
13. DO NOT ORDER PRESS FIT HOLES
14. DIMENSIONS SHALL APPLY AFTER ALCOHOL, PAINT, FINISH, OR COAT IS APPLIED
15. INSTALL PRESS FIT STANDOFFS, STUDS, AND NUTS IN ACCORDANCE WITH THE MANUFACTURER'S SPECIFICATIONS
16. FINISHED PART TO BE FREE OF OILS, LUBRICANTS, AND OTHER CONTAMINANTS
17. NO NOT ON LOCK NUTS TO BE USED ON ANY PEM STUDS, UNLESS OTHERWISE SPECIFIED
18. ALL PEM STUDS WILL BE SECURED WITH EXTERNAL TOOTH WASHER AND STANDARD NUTS
19. TOLERANCES, UNLESS OTHERWISE SPECIFIED:  
a. HOLE SIZE:  $\pm 0.003$   
b. HOLE TO HOLE:  $\pm 0.005$   
c. HOLE TO EDGE:  $\pm 0.010$   
d. HOLE TO FOLD:  $\pm 0.015$   
e. FOLD TO FOLD:  $\pm 0.020$



UNLESS OTHERWISE SPECIFIED:		NAME	DATE	DDJB Unlimited Inc.			
DIMENSIONS ARE TO DECIMALS		Model by:	mm	00-0000-0000			
ENCLOSURE		Drawn by:	Maxwell	Enclosure, OD, 30, OD, UL50			
ENCLOSURE		Sales Representative	Complatt	REV	Code Code:	DWG. NO.:	REV
ENCLOSURE		Q.A. Appr:	4400000	D	38515	01844	A
ENCLOSURE		Prod Mgr:	Check	SCALE: 1:12 WEIGHT: 104 lbs.			
ENCLOSURE		Control Number:		SHEET 1 OF 3			



DDb FORM 7-1-2 REV AK 08/02/17



BACK VIEW

UNLESS OTHERWISE SPECIFIED:			
DIMENSIONS ARE IN INCHES			
ANGLE	1"		
DRILLING & RECESSES	AS SHOWN		
FINISHES	AS SHOWN		
TRIM & FILL	AS SHOWN		
ALL OTHERS	AS SHOWN		
MATERIAL: UNLESS OTHERWISE SPECIFIED			
PAINT: DIAMOND VORTEX, WHITE GLOSS F-4100			
DO NOT SCALE DRAWING			
DDB Unlimited Inc.			
CG-3000-UL50			
Endicore, OD, 30, DD, UL50			
REV	Code Code:	DWG. NO.:	REV
D	28515	01844	A
SCALE: 1:12		WEIGHT:	SHEET 2 OF 3