



An ISO 9001/27001  
Certified company

# OD-UL Series

## OD-50DDC-UL50



### Why Choose the OD-UL Series?

The OD-UL series of enclosures are the ultimate choice for your outdoor racking requirements. Being made of our own rugged Alumiflex®, you'll find it noticeably lighter than steel, yet strong enough to rack even the heaviest equipment. When choosing the OD-UL series, you have handpicked the highest value in American construction. The OD-UL series includes the standard features you have come to expect with DDB, incorporating the versatile strut system for adjustable racking, the security of a 3- point locking system, our patented Alumishield® solar cap to manage heat loads, UL listed grounding straps, & UL listed gasketing. For those who need more than just our standard enclosure, DDB can also make a truly customized solution with our many available options including HVAC, providing a climate-controlled environment for any electronic equipment, electrical load panels and cable entry solutions to name a few. All of this comes together to create an enclosure able to meet all of the unique needs your customers have been seeking. DDB offers a state-of-the-art design, a competitive price, benchmark lead times and a guaranteed delivery, all backed up with an industry leading 15-year warranty on every enclosure. Put DDB's substantial stock to work for you today. Contact our professional staff to assist you with your made-to-order solution.

### Application Types

- Telecommunications
- Wireless/Broadband
- Fiber Optics
- Back Haul
- Small Cell/DAS
- Public Safety
- Utility
- Base Station
- Military
- Trailer-Based Communications
- Wi-Fi
- LTEE/4G/5G



### Industry Standards:

**OD Series Listed to UL 50/50E Type 4**  
ETL listed to UL Standard 60950-1/CSA 22.2C

2301 S. HWY 77 Pauls Valley, OK 73075  
T: (800) 753-8459 – F: (877) 220-7236  
[sales@ddbunlimited.com](mailto:sales@ddbunlimited.com) [www.ddbunlimited.com](http://www.ddbunlimited.com)



### Features

- 0.125" Aluminum Construction
- Stainless Steel External Hardware/Hinge
- Fully Welded Construction
- 3 Point Lock System
- Front and Rear Access
- Custom Colors Available
- Cream Powder-Coat in Stock
- Flexible and Scalable
- 15 Year Warranty
- Quick Shipping
- Water/Rain/Sleet/Dust Tight

### Weight and Dimensions

Approximate Exterior Enclosure Dimensions:  
51"H x 28"W x 39"D  
Shipping Dimensions:  
35"W x 45"L - Palletized  
Approximate Shipping Weight:  
200 lbs.

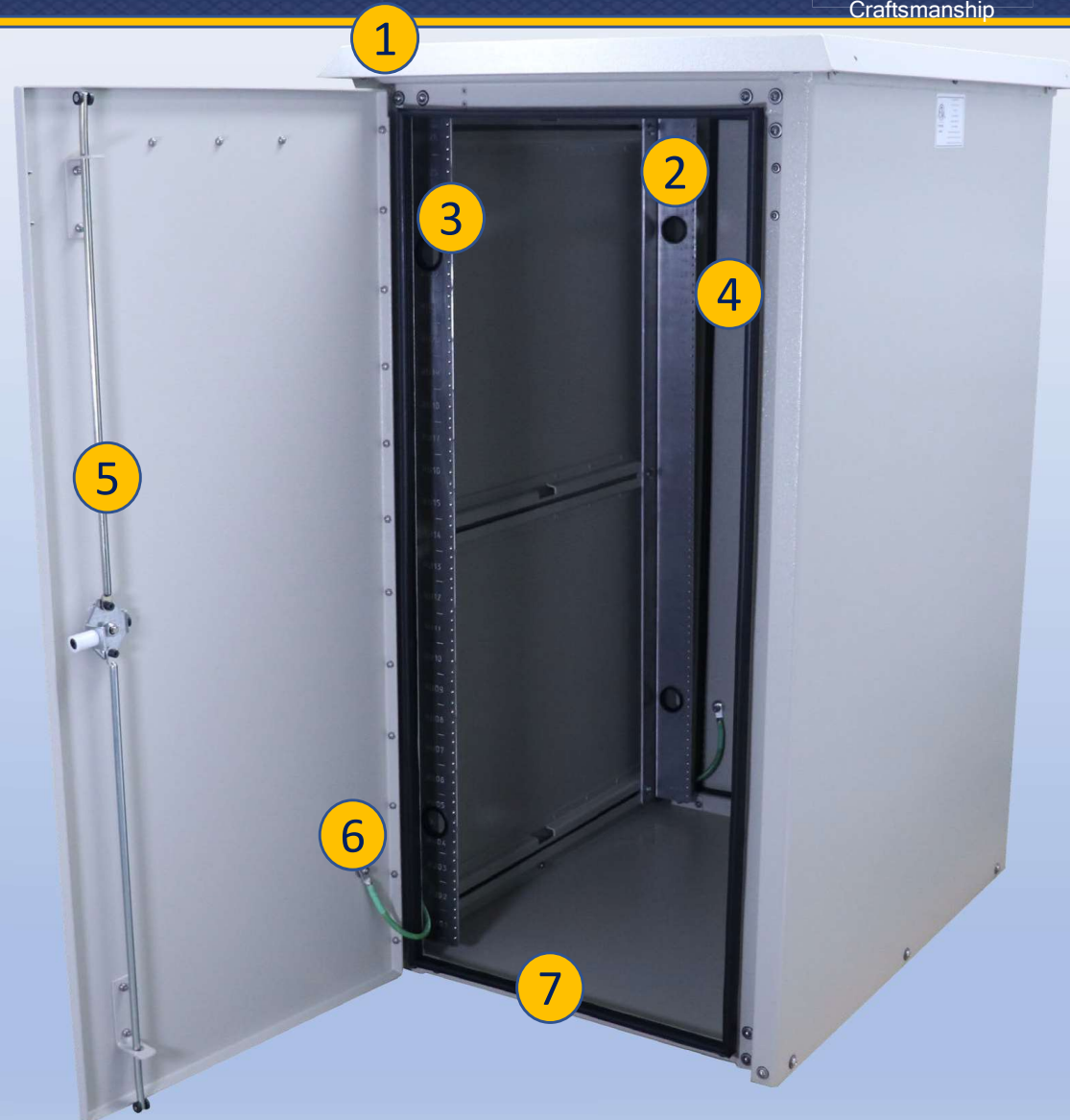
# OD-UL Series

## OD-50DDC-UL50

Made in America



Believing in American  
Craftsmanship



### Features

1. Solar Shield (Alumishield)
2. 2 Sets of 19" Adjustable Racking Rails
3. 26 Racking Units
4. Rear Access Door
5. 3 Point Locking System
6. Ground Strap - UL Listed
7. Frame Gasket - UL Listed

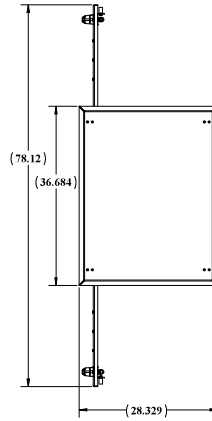
2301 S. HWY 77 Pauls Valley, OK 73075

T: (800) 753-8459 – F: (877) 220-7236

[sales@ddbunlimited.com](mailto:sales@ddbunlimited.com) [www.ddbunlimited.com](http://www.ddbunlimited.com)

DDb FORM 7-1-2 REV 04/25/13

## WEB DRAWING (NOT FOR FABRICATION)

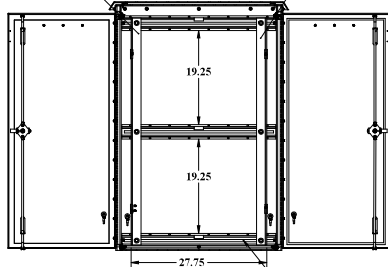


4X GROUNDING STUDS

STANDOFFS STANDARD FOR OPTIONAL LIGHTING OVER EACH DOOR

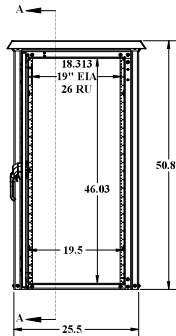
FRONT AND REAR RAILS STANDARD

FRONT AND REAR RAILS STANDARD

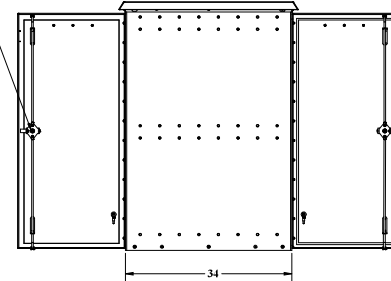


SECTION A-A

R-STRUTS FOR RAIL ADJUSTMENTS



3 POINT LOCKING EACH DOOR



### NOTES: UNLESS OTHERWISE SPECIFIED

1. DIMENSIONS AND TOLERANCES ARE IN ACCORDANCE WITH ASME Y14.5M
2. DIMENSIONS ARE IN INCHES, UNLESS OTHERWISE SPECIFIED
3. THIS IS A SUPPLEMENTAL DRAWING AND MAY NOT BE FULLY DIMENSIONED
4. THE NOTES, TOLERANCES, AND SPECIAL INSTRUCTIONS ARE TO BE USED ALONG WITH THE LATEST REVISION OF THE SOLID DATABASE. THE PART OR ASSEMBLY IS TO BE CONTROLLED PER THE ELECTRONIC FILE
5. ALL PEM STUDS SHALL BE PHA FOR STAINLESS ENCLOSURES AND PHA FOR ALUMINUM
6. ALL EXTERIOR WASHERS SHALL BE SEALING WASHERS
7. THE FOLLOWING WEATHER STRIPPING SHALL BE USED FOR THE FOLLOWING APPLICATIONS:  
DOOR LIP - TRIMLOCK 3100B(X) RC  
FAN PLATES - STICKER-TITE 10838  
AC'S - STICKER-TITE 10834  
CUSTOM ENCLOSURES SHALL HAVE SECURITY TORX FOR ALL EXTERIOR HARDWARE
8. SYMBOL (C) DENOTES CRITICAL DIMENSIONS AND MUST BE INSPECTED
9. REMOVE ALL BURRS AND BEAD EDGES 0.005" MAX RADIUS OR CHAMFER
10. DO NOT DRILL OR PRESS FIT HOLES
11. DIMENSIONS SHALL APPLY AFTER ALCOYNE PAINT FINISH OR COAT IS APPLIED
12. INSTALL PRESS FIT STANDOFFS, STUDS, AND NUTS IN ACCORDANCE WITH THE MANUFACTURER'S SPECIFICATIONS
13. ALL OPEN HOLES SHALL BE POPULATED WITH APPLICABLE HARDWARE
14. IDENTIFY PART WITH PART NUMBER, REVISION LETTER AND SERIAL NUMBER
15. FINISHED PART TO BE FREE OF OILS, LUBRICANTS, AND OTHER CONTAMINANTS
16. DO NOT USE LOCK NUTS TO BE USED OR ANY PEM STUDS, UNLESS OTHERWISE SPECIFIED
17. ALL PEM STUDS WILL BE SECURED WITH EXTERNAL TOOTH WASHER AND STANDARD NUTS
18. TOLERANCES UNLESS OTHERWISE SPECIFIED:  
a. HOLE SIZE:  $\pm 0.005$   
b. HOLE TO HOLE:  $\pm 0.005$   
c. HOLE TO EDGE:  $\pm 0.010$   
d. HOLE TO FOLD:  $\pm 0.010$   
e. FOLD TO FOLD:  $\pm 0.020$

## WEB DRAWING (NOT FOR FABRICATION)



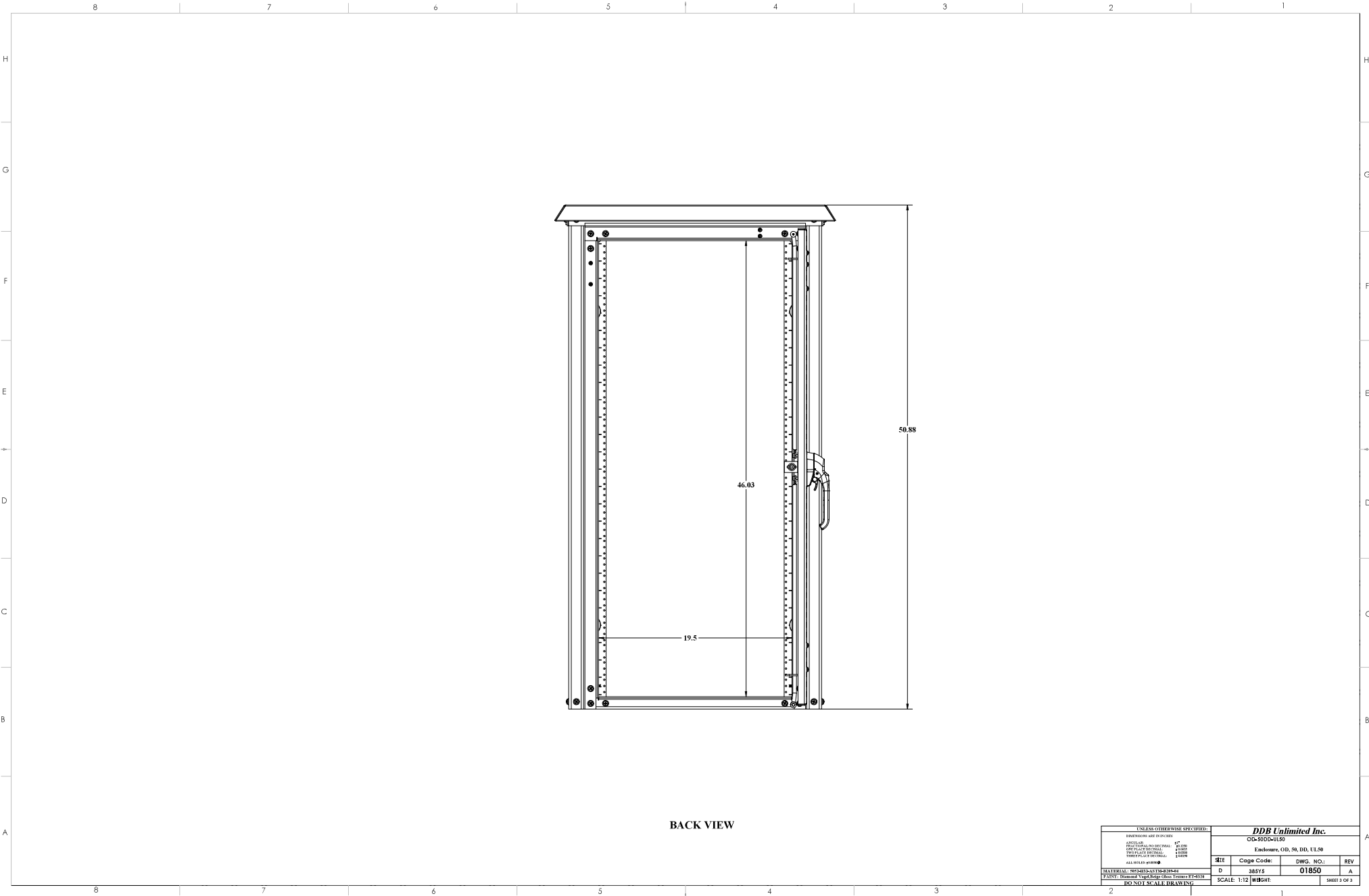
UNLESS OTHERWISE SPECIFIED:  
DIMENSIONS ARE IN INCHES  
TOLERANCES:  
Holes:  $\pm 0.005$   
Holes to Holes:  $\pm 0.005$   
Holes to Edges:  $\pm 0.010$   
Holes to Folds:  $\pm 0.010$   
Folds to Folds:  $\pm 0.020$

NAME DATE  
Model by: Mavet 09/17/2018  
Drawn by: Mavet 09/17/2018  
Sales Rep: Joe Campbell  
Q.A. Appr: ddb/ssa 09/28/18  
Prod. Mgr.: Chalk 09/28/18

**DDb Unlimited Inc.**  
01-XXXX-UL50  
Endress, CO, SO, DD, UL50  
SITE Cage Code: DWG NO.: REV  
D 01850 A  
SCALE: 1:12 WEIGHT: 144 lbs. SHEET 1 OF 3

2

DDb FORM 7.1-2 REV AK 08/02/17



BACK VIEW

UNLESS OTHERWISE SPECIFIED:		DDB Unlimited Inc.	
DIMENSIONS ARE IN INCHES		OD-500D-UL50	
ANGLE/SLANT	1" 90.000	Enclosure, OD, 50, DD, UL50	
FRONT/BACK TO FRONT/BACK	1/8" 45.000		
OD/PLATE/BACK	1/16" 22.500		
TWO PLATE/FRONT/BACK	1/32" 11.250		
FRONT/BACK	1/64" 5.625		
ALL DIMENSIONS ARE TO FACE			
MATERIAL: 7075-T6 ALUMINUM 321-4000		REV	Code Code:
PAINT: Diamond Vinyl/Brass Glass/Chrome/PT-4333		D	28515
DO NOT SCALE DRAWING		DWG. NO.: 01850	
		SCALE: 1:12	WEIGHT:
		SHEET 2 OF 3	