



An ISO 9001/27001
Certified company

WOD Series

WOD-30DDXC

Made in America



Believing in American
Craftsmanship



Why Choose the WOD Series?

The WOD series of enclosures are the ultimate choice for your outdoor racking requirements. Being made of our own rugged Alumiflex®, you'll find it noticeably lighter than steel, yet strong enough to rack even the heaviest equipment. When choosing the WOD series, you have handpicked the highest value in American construction. The WOD-30DDXC includes the standard features you have come to expect with DDB, incorporating the versatile strut system for adjustable racking, the security of a 3-point locking system and our patented Alumishield® solar cap to manage heat loads. For those who need more than just our standard enclosure, DDB can also make a truly customized solution with our many available options including HVAC, providing a climate-controlled environment for any electronic equipment, electrical load panels and cable entry solutions to name a few. All of this comes together to create an enclosure able to meet all of the unique needs your customers have been seeking. DDB offers a state-of-the-art design, a competitive price, benchmark lead times and a guaranteed delivery, all backed up with an industry leading 15-year warranty on every enclosure. Put DDB's substantial stock to work for you today. Contact our professional staff to assist you with your made-to-order solution.



Features

- 0.125" Aluminum Construction
- Stainless Steel External Hardware/Hinge
- 3 Point Lock System
- Heavy Duty Out-Door Construction
- Front and Rear Access
- Custom Colors Available
- Cream Powder Coat in Stock
- Flexible and Scalable
- 15 Year Warranty
- Quick Shipping

Application Types

Telecommunications
Wireless/Broadband
Fiber Optics
Back Haul
Small Cell/DAS
Public Safety
Utility
Base Station
Military
Trailer-Based Communications
Wi-Fi
LTEE/4G/5G



Industry Standards:

NEMA 3R as shown
NEMA 4 and 4X configurable (unlisted to environmental rating)
WOD Series Listed to UL 50/50E Type 4 Available
ETL listed to UL Standard 60950-1/CSA 22.2C

2301 S. HWY 77 Pauls Valley, OK 73075

T: (800) 753-8459 – F: (877) 220-7236

sales@ddbunlimited.com www.ddbunlimited.com

Weight and Dimensions

Approximate Exterior Enclosure Dimensions:

32"H x 32"W x 47"D

Shipping Dimensions:

45"W x 60"L - Palletized

Approximate Shipping Weight:

190 lbs.

WOD Series

WOD-30DDXC

Made in America

Believing in American
Craftsmanship

Features

1. Solar Shield (Alumishield)
2. Front and Rear 19" and 23" Reversible Racking Rails
3. Rear Access Door
4. Stainless Steel Door Hinge
5. 3 Point Locking System
6. Powder-Coat Cream
7. Reusable Vent Filters

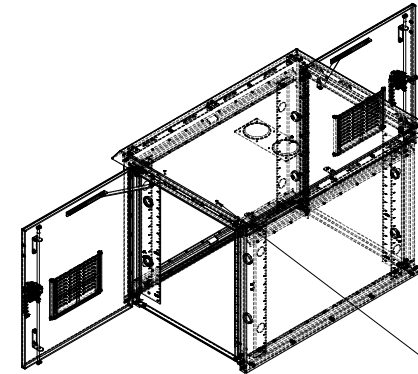
2301 S. HWY 77 Pauls Valley, OK 73075

T: (800) 753-8459 – F: (877) 220-7236

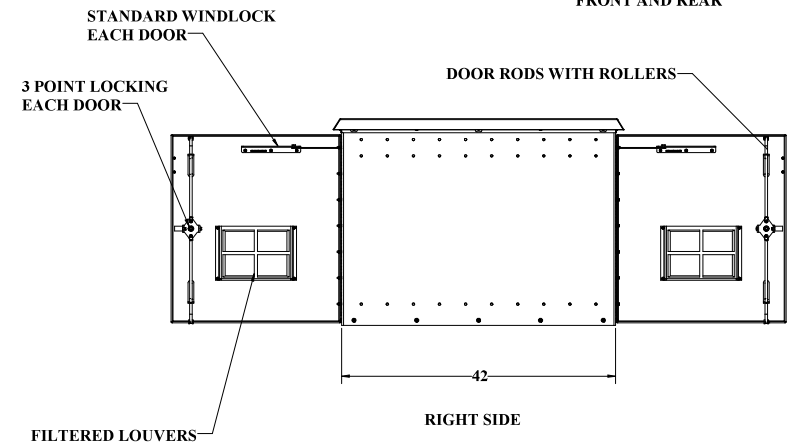
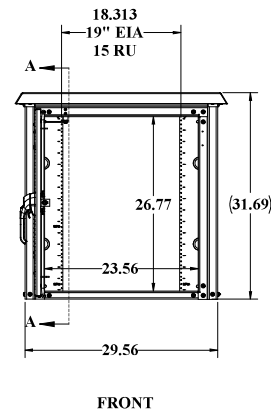
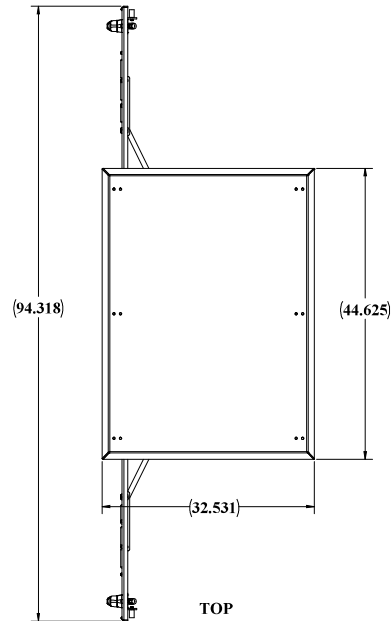
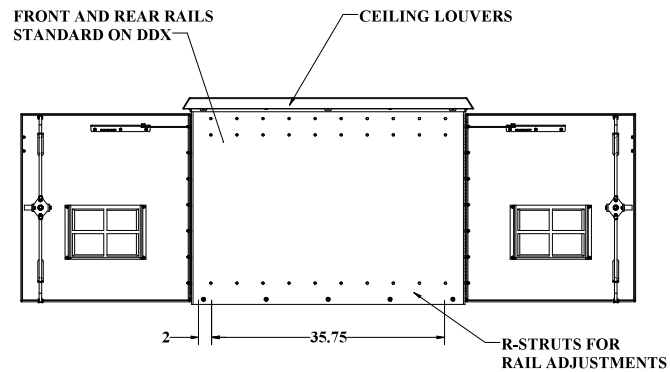
sales@ddbunlimited.com www.ddbunlimited.com

WEB DRAWING (NOT FOR FABRICATION)

REVISIONS		
REV.	DESCRIPTION	DATE
A	Initial Web Drawing per DR-00134	6/10/2013
B	Revise to incorporate new components and new drawing template pdr DR-00909	5/13/2014
C	UPDATED DRAWING TO NEW FORMAT PER DR-01941	4/10/2019
D	UPDATED WEB DRAWING WITH DOOR RODS WITH ROLLERS PER DR-02270	4/24/2020



STANDOFFS ARE STANDARD
FOR OPTIONAL LIGHTING
OVER EACH DOOR
FRONT AND REAR



WEB DRAWING (NOT FOR FABRICATION)

UNLESS OTHERWISE SPECIFIED:		NAME		DATE	
DIMENSIONS ARE IN INCHES		Model by:		DDB 3/24/2014	
ANGLE/CLAMP		Drawn by:		aroon 06/18/19	
30°		Sales Rep:		Buy c 6/21/2013	
45°		P.C. Appr:		04/27/20	
60°		Prod. Mgr:		Chick 04/28/20	
75°		Control Number:		SCALE: 1:12 WEIGH: 149 lbs.	
90°		MATERIAL: 905-9812X12-15		DWG. NO.: 00271	
105°		PART: 905-9812X12-15		REV	
120°		PAINT: Primer, 2nd, 3rd, 4th, 5th, 6th, 7th, 8th, 9th, 10th, 11th, 12th		Sheet 1 of 3	
135°		DRAWING: 905-9812X12-15			
150°					
165°					
180°					
195°					
210°					
225°					
240°					
255°					
270°					
285°					
300°					
315°					
330°					
345°					
360°					

UNCLASSIFIED PUBLIC

File Location: (DD8)\EPDM Vault:
C:\DD8\Drawing Requests\Customers\DD8 WEB DWG\WOD Family WEB\DR-00271 (WOD
30DDX WEB)\

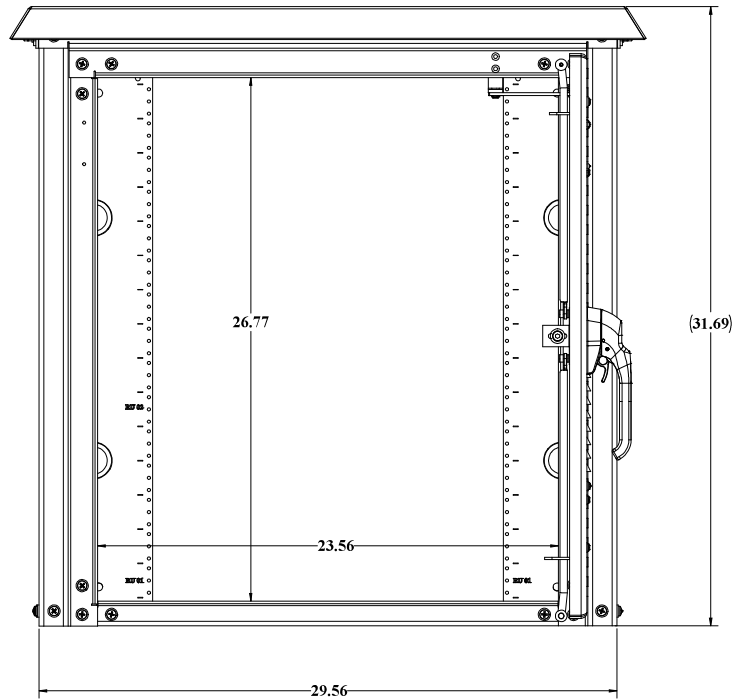


WEB DRAWING (NOT FOR FABRICATION)

UNCLASSIFIED PUBLIC

THE INFORMATION CONTAINED IN THIS DRAWING IS THE SOLE PROPERTY OF DDB Unlimited, INC. ANY REPRODUCTION IN PART OR AS A WHOLE WITHOUT THE WRITTEN PERMISSION OF DDB Unlimited, INC. IS PROHIBITED.

WEB DRAWING (NOT FOR FABRICATION)



BACK VIEW
GASKET NOT SHOWN

WEB DRAWING (NOT FOR FABRICATION)

UNLESS OTHERWISE SPECIFIED:				DDB Unlimited Inc.						
DIMENSIONS ARE IN INCHES				WOD-300DX						
ANGLE:	FRONT/FACE NO DECIMAL	1"	81.000	WOD, 36"H, DDX,WOD-300DX						
	OR BACK PLATE DECIMAL	1"	81.000							
	FRONT/FACE DECIMAL	1"	81.000							
	THREE PLACE DECIMAL	1"	81.000							
ALL BOLTS 1/2" DIA										
MATERIAL: 6061ALUMINUM 12"x12"x1/8" 304SS-304H				SIZE				Cage Code:	DWG. NO.:	REV
PAINT: EPOXY/FLUOROPOLYMER/										