



Why Choose the 5G-LTE Series?

The 5G-LTE series enclosure is the new evolution and standard for outdoor equipment racking applications. Being constructed of our Alumiflex® material, you'll find it noticeably lighter than steel, yet strong enough to rack even the heaviest equipment. We have taken everything that was great about the LTEE and made it better. With the 5G-LTE, you will continue to find all the standard features you need including, HVAC climate control, electrical load panel, and spool-up, side-box, but we didn't stop there. We have added extra battery tray support for the increasing needs of battery backup; reversable 19" or 23" rack rails, using our versatile "R-strut system"; improved the security and sealing ability of the 3-point locking system to give greater security and weather protection, making this a superb battery enclosure. Again, and again, DDB leads the way with advanced design and features that just work. All while being the most competitively priced and readily available enclosure on the market. Put DDB's substantial stock to work for you today. Contact our professional staff to assist you with your made-to-order solution.

Application Types

Telecommunications
Wireless/Broadband
Fiber Optics
Back Haul
Public Safety
Utility
Base Station
Military
Wi-Fi
LTEE/4G/5G



Environmental & Safety Ratings:

- ✓ NEMA 3R, IP 24 (battery compartment)
- ✓ NEMA 4, IP 66 (top compartment)
- ✓ ETL listed; Safety Requirements, UL 62368-1:2019 Ed.3, CSA C22.2

2301 S. HWY 77 Pauls Valley, OK 73075
T: (800) 753-8459 – F: (877) 220-7236

sales@ddbunlimited.com www.ddbunlimited.com



Features

- 0.125" Aluminum Construction
- Stainless Steel External Hardware/Hinge
- 3 Point Lock System
- Heavy Duty Out-Door Construction
- Front and Rear Access
- Flexible and Scalable
- 15 Year Warranty
- Quick Shipping

Weight and Dimensions

Approximate Exterior Enclosure Dimensions:

81"H x 30"W x 34"D

Shipping Dimensions:

50"W x 60"L - Decked Pallet

Approximate Shipping Weight:

644 lbs.

5G-LTE Enclosure

Features

1. Alumishield
2. Front & rear 19" or 23" Reversible, Adjustable, Racking Rails, 52 RU's
3. 4-Square Electrical Outlet
4. 3 Point Locking System
5. Powder Coat White
6. Battery Compartment
7. 4000 BTU HVAC
8. Spool-Up Box with cable passthrough holes
9. 8 Space 100 Amp LC
10. 12" copper, ground bar *(inside spool-up box)*
11. Reusable vent filters
12. 50A generator plug
13. 6, I-Hooks for lifting
14. 2, door grounding studs with copper grounding cables
15. 2, 48VDC fans with thermostat *(inside rear door)*
16. R3 Dupont insulation



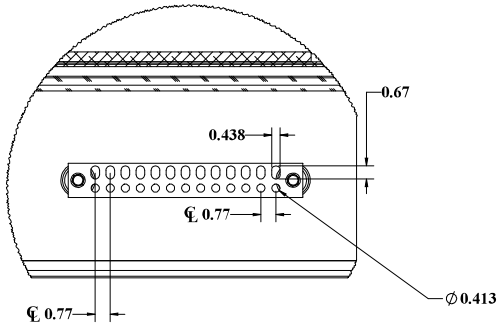
Installation, operating and safety instructions can be downloaded here

Scan this code for replacement parts

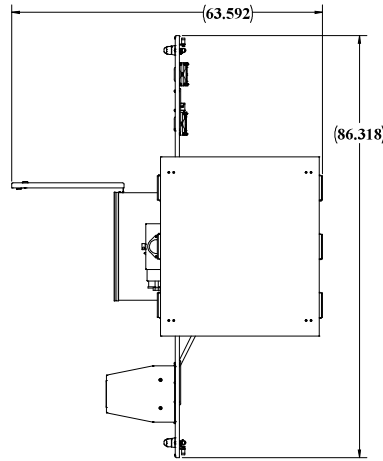


WEB DRAWING (NOT FOR FABRICATION)

REVISIONS		
REV.	DESCRIPTION	DATE
A	WEBSITE DRAWING FOR 5G-LTE	1/9/2020
B	UPDATED WITH N28 PENTAIR A/C	5/12/2020

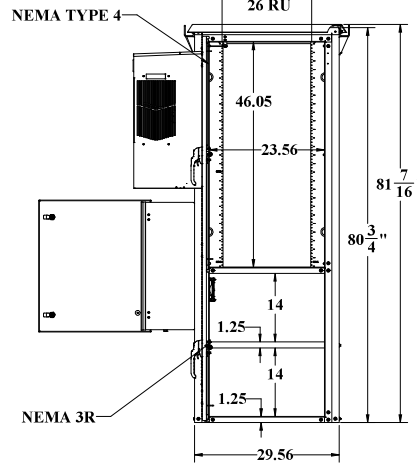
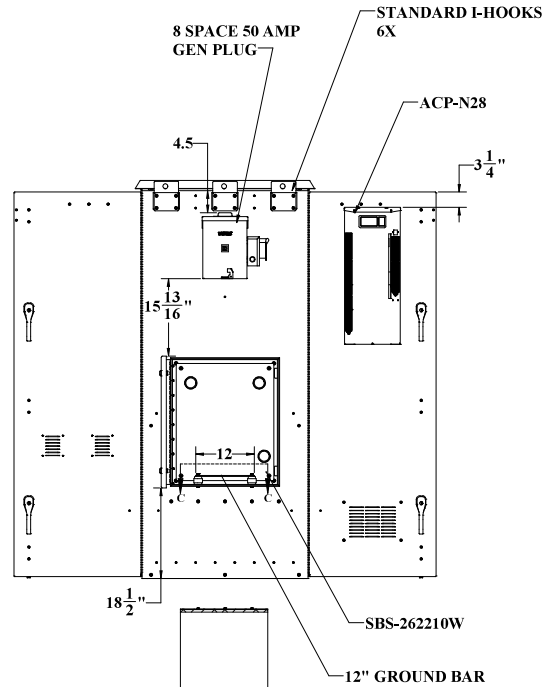
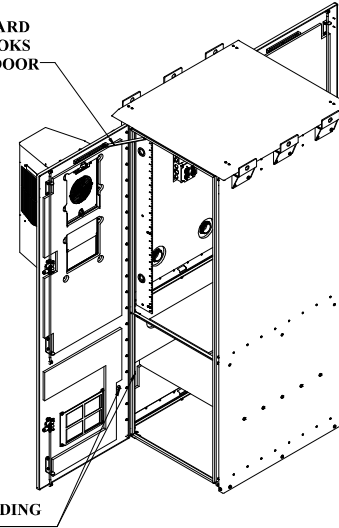


DETAIL D
SCALE 1:3



STANDARD WINDLOKS EACH DOOR

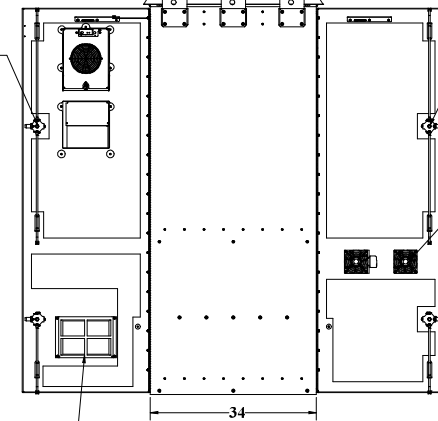
GROUNDING STUD



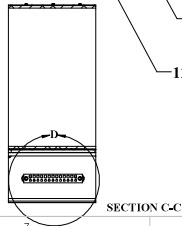
3 POINT LOCKING

3 POINT LOCKING

48 VOLT FANS



VENTS WITH FILTERS



SECTION C-C

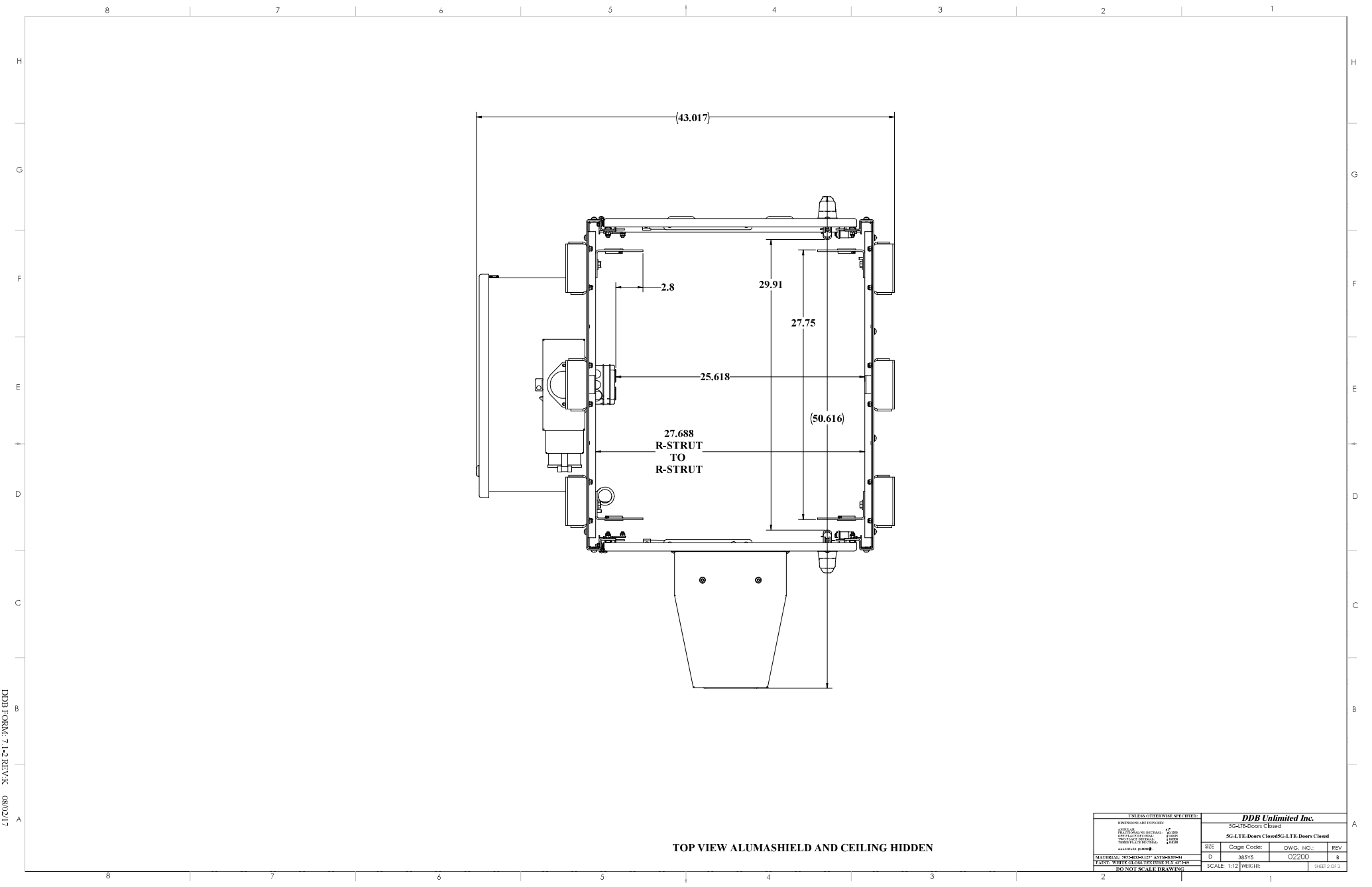
NEMA 4 (Top Compartment)(Unlisted)
NEMA 3R (Battery Compartment)(Unlisted)
ETL listed to UL Standard 60950-1/CSA 22.2C

UNLESS OTHERWISE SPECIFIED:		NAME	DATE	DDB Unlimited Inc.		
CONSTRUCTION	AS SHOWN	Model by:	0208	SCALE:		
APPROVAL	AS SHOWN	Drawn by:	Manuel	01/09/20		
DESIGN	AS SHOWN	Sales Rep/Comp/Off:		SHE	Cage Code:	DWC NO.:
PRODUCTION	AS SHOWN	Q.A. Appr:	Mary	01/12/20	88515	02200
FIELD	AS SHOWN	Prod.Mgr:	Chad	05/13/20	D	B
MATERIALS	AS SHOWN	Scale:	1:12	WEIGHT:	47.5 lbs.	SHEET:
DO NOT SCALE DRAWING						

WEB DRAWING (NOT FOR FABRICATION)

UNCLASSIFIED PUBLIC

DDB FORM 7.1-2 REV. 05/02/19



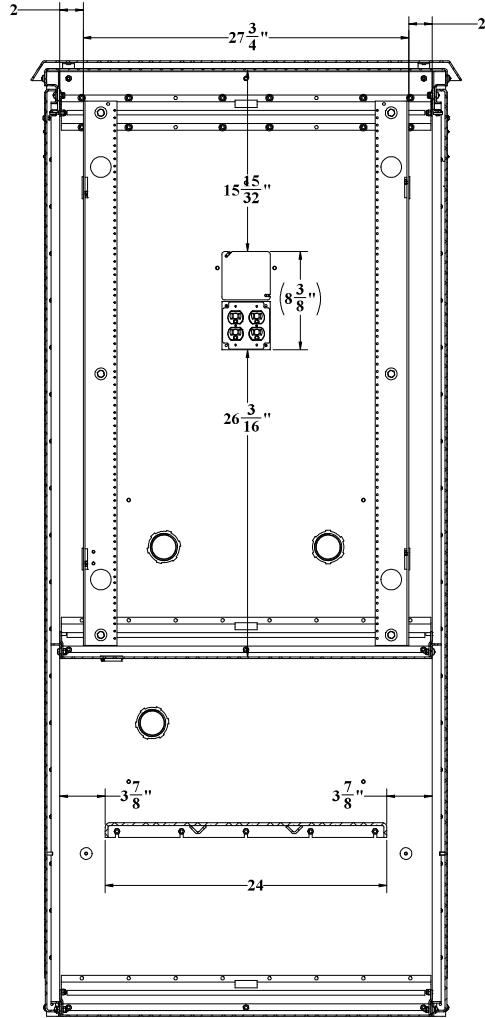
TOP VIEW ALUMASHIELD AND CEILING HIDDEN

UNLESS OTHERWISE SPECIFIED:			
DIMENSIONS ARE IN INCHES			
FINISH	1"		
DRILLING	AS SHOWN		
THREADS	AS SHOWN		
WELDING	AS SHOWN		
ALL DIMENSIONS	UNLESS OTHERWISE SPECIFIED		
MATERIAL SPECIFICATIONS: ALUMINUM			
PAINT: WHITE GLOSS TEXTURE PLY 10-540			
DO NOT SCALE DRAWING			
DDB Unlimited Inc.		SCALE: 1:12	
SC-175-Scors Closed			
Scale: If Doors Closed/If LIE-Doors Closed			
REV	Change Code:	DWG. NO.:	REV
D	88515	02200	8
SCALE: 1:12		SHEET 2 OF 3	

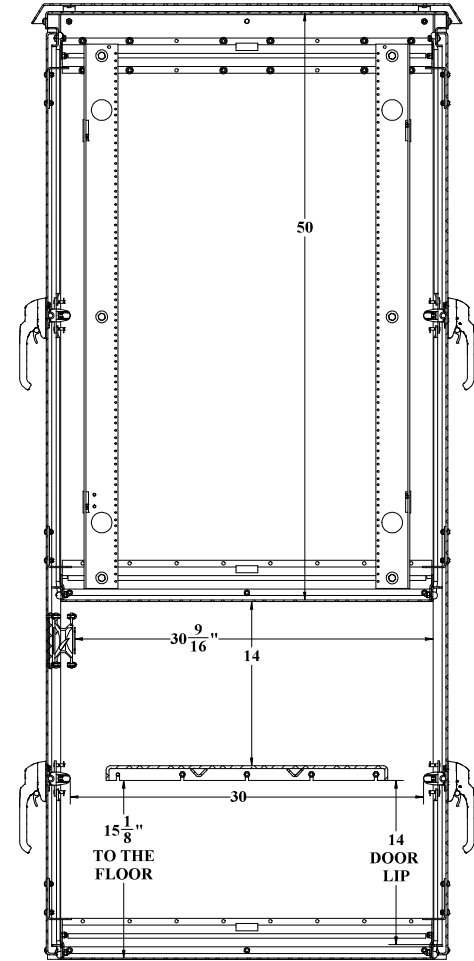
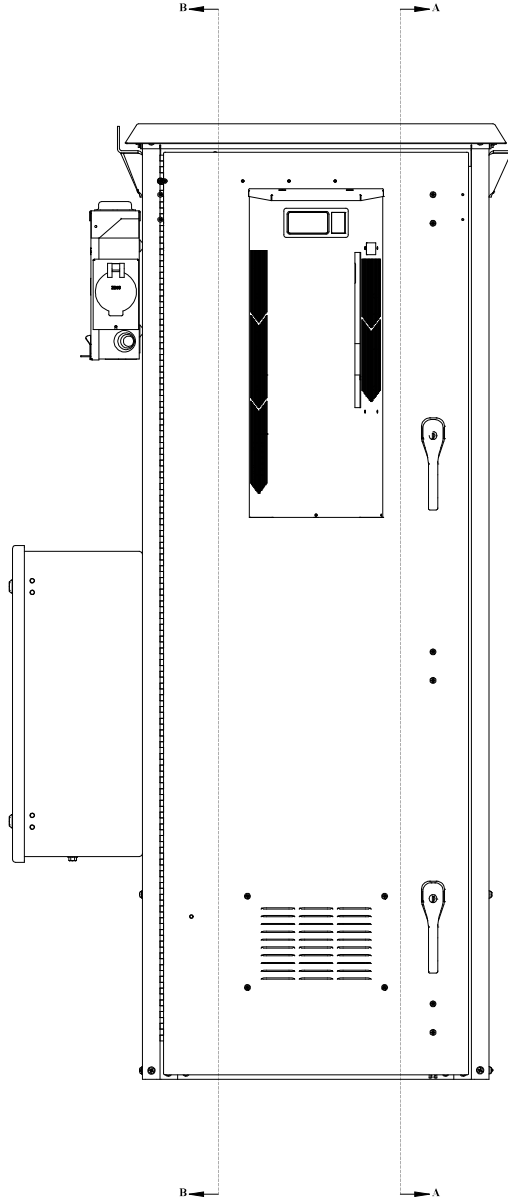
UNCLASSIFIED - PUBLIC

DDB FORM 7.1-2 REV. A 08/02/17

WEB DRAWING (NOT FOR FABRICATION)



SECTION B-B
SCALE 1:5



SECTION A-A
SCALE 1:5

WEB DRAWING (NOT FOR FABRICATION)

UNLESS OTHERWISE SPECIFIED:		NAME	DATE	DDB Unlimited Inc.			
CONSTRUCTION LINE OR STYLE	Model No.	5048		504-TE			
APPROVAL	Drawn By	Manus	01/09/20	SC-LTE-Doms Closed			
DATE OF APPROVAL	Checked By	Manus	01/09/20	SHE	Cage Code:	DWC. NO.:	REV
DATE OF DRAWING	Sales Rep./w/ Copyright			D	88515	02200	B
DATE OF REVISION	Q.A. Appr.	Mary	01/12/20	SCALE: 1:16 WKT:HT			
DATE OF REVISION	Prod.Mgr.	Chad	01/13/20	SHEET 3 OF 3			
MATERIALS: 304 STAINLESS STEEL/304HAT							
FABRICATION: 304 STAINLESS STEEL/304HAT							
DO NOT SCALE DRAWING							

UNCLASSIFIED PUBLIC