

# OD Series

## OD-16DXC



## Why Choose the OD Series?

The OD series of enclosures are the ultimate choice for your outdoor racking requirements. Being made of our own rugged Alumiflex®, you'll find it noticeably lighter than steel, yet strong enough to rack even the heaviest equipment. When choosing the OD series, you have handpicked the highest value in American construction. The OD-16DXC includes the standard features you have come to expect with DDB, incorporating the versatile rail strut (R-Strut) system for adjustable racking, the security of a 3- point locking system and our patented Alumishield® solar cap to manage heat loads. For those who need more than just our standard enclosure, DDB can also make a truly customized solution with our many available options including HVAC, providing a climate-controlled environment for any electronic equipment, electrical load panels and cable entry solutions to name a few. All of this comes together to create an enclosure able to meet all of the unique need's customers have been seeking. DDB offers a state-of-the-art design, a competitive price, benchmark lead times and a guaranteed delivery, all backed up with an industry leading 15-year warranty on every enclosure. Put DDB's substantial stock to work for you today. Contact our professional staff to assist you with your made-to-order solution.

## Application Types

Telecommunications  
Wireless/Broadband  
Fiber Optics  
Back Haul  
Small Cell/DAS  
Public Safety  
Utility  
Base Station  
Military  
Trailer-Based Communications  
Wi-Fi  
LTEE/4G/5G



## Environmental & Safety Ratings:

- ✓ NEMA 3R (shown above)
- ✓ NEMA 4 and 4X configurable (not shown)
- ✓ OD-16 Series, ETL environmentally listed to UL 50/50E, Type 4's  
Available here: <https://www.ddbunlimited.com/new-ul-50e-listed/>
- ✓ ETL listed; Safety Requirements, UL 62368-1:2019 Ed.3, CSA C22.2



## Features

- 0.125" Aluminum Construction
- Stainless Steel External Hardware/Hinge
- 3 Point Lock System
- Heavy Duty Out-Door Construction
- Front and Rear Access
- Custom Colors Available
- Cream Powder-Coat standard color
- Flexible and Scalable
- 15 Year Warranty
- Quick Shipping

## Weight and Dimensions

### Approximate Exterior Enclosure Dimensions:

18"H x 28"W x 30"D

### Shipping Dimensions:

32"W x 42"L - Palletized

### Approximate Shipping Weight:

103 lbs.

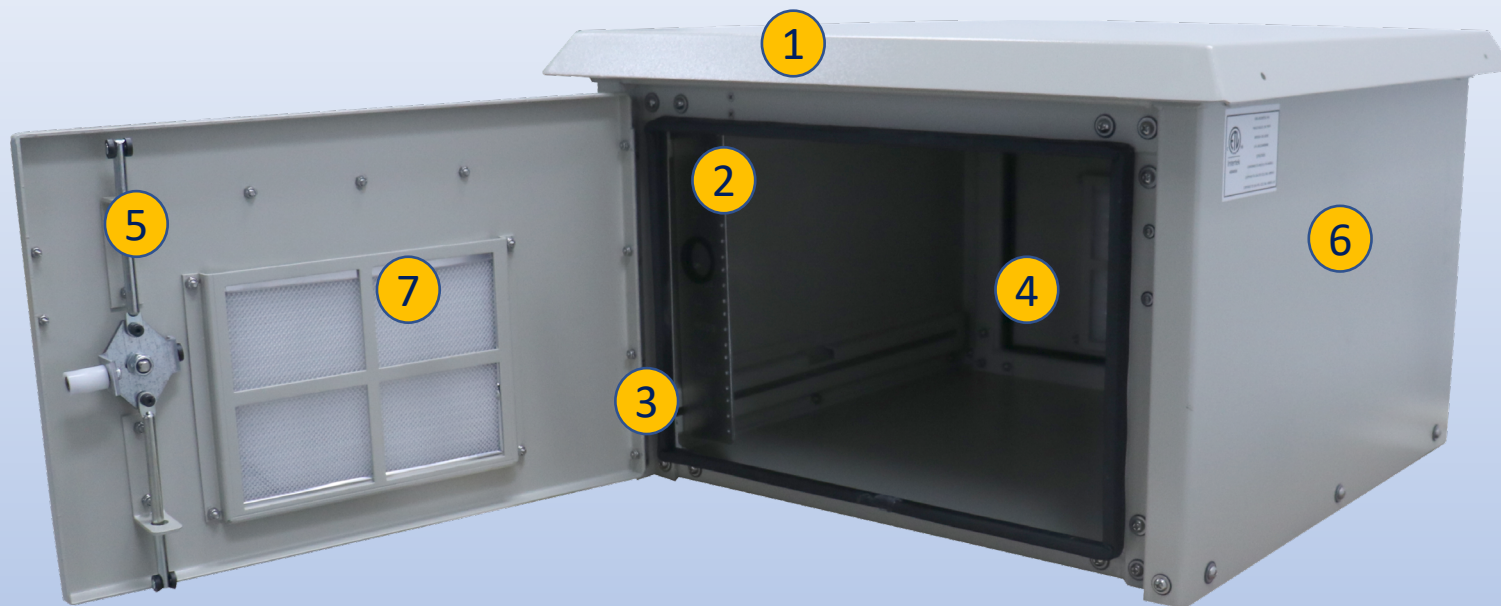
2301 S. HWY 77 Pauls Valley, OK 73075

T: (800) 753-8459 – F: (877) 220-7236

[sales@ddbunlimited.com](mailto:sales@ddbunlimited.com) [www.ddbunlimited.com](http://www.ddbunlimited.com)

# OD Series

## OD-16DXC



### Features

1. Solar Shield (Alumishield)
2. 19" Adjustable Racking Rails, 7 RU's
3. Stainless steel door hinge
4. Rear Access Door
5. 3 Point Locking System
6. Powder-Coat Cream
7. Reusable Vent Filters



Installation, operating and  
safety instructions can be  
downloaded here



Scan this code for  
replacement parts



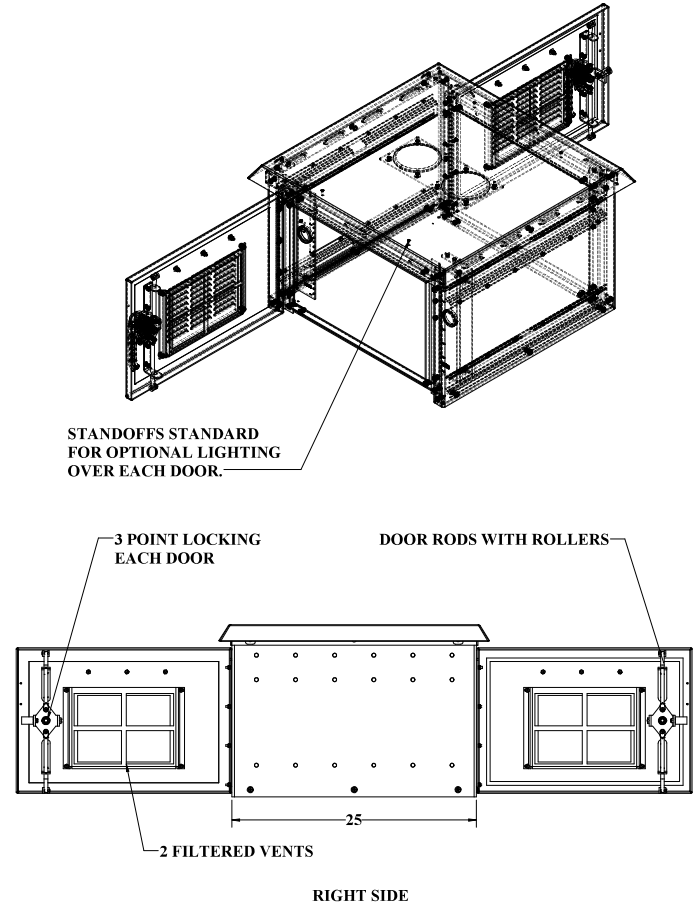
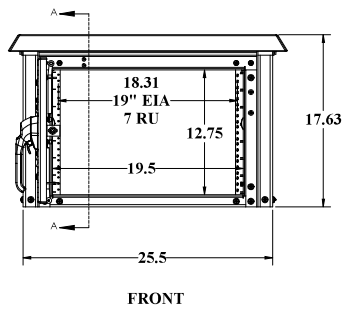
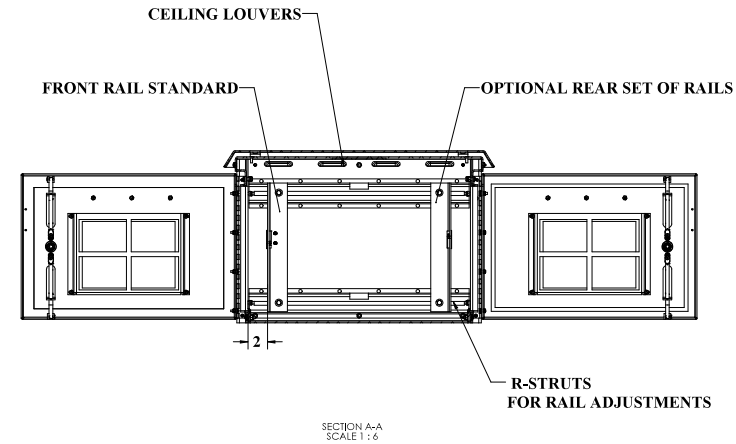
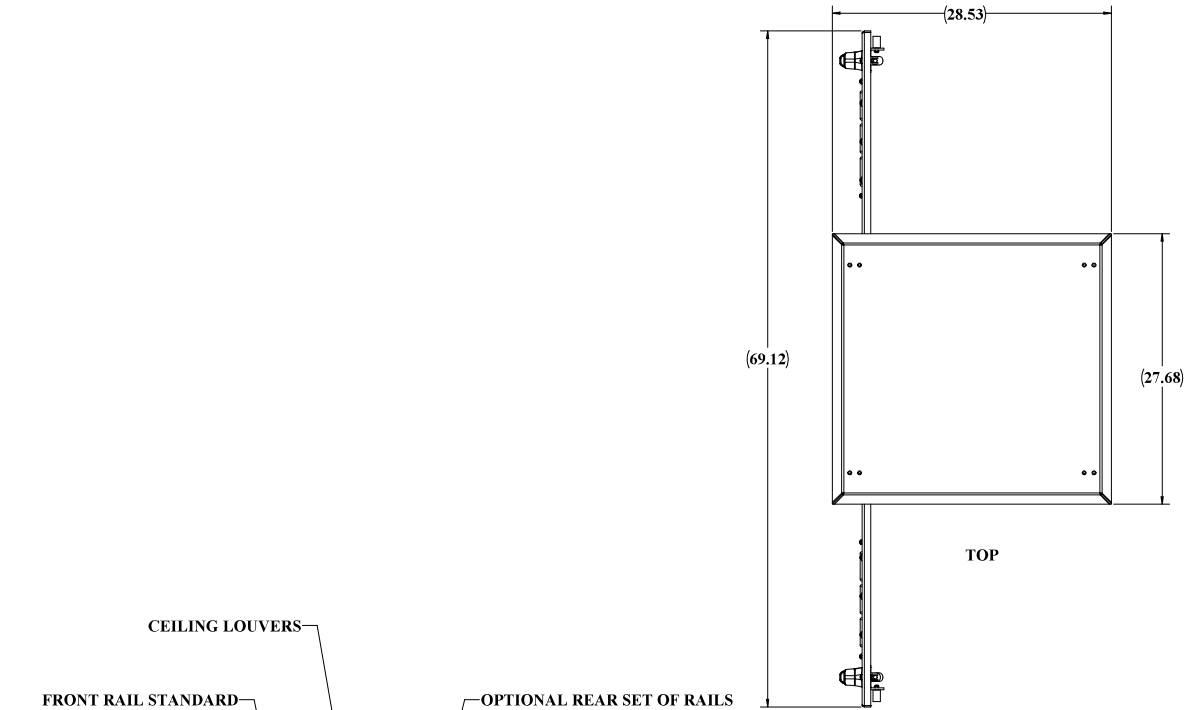
2301 S. HWY 77 Pauls Valley, OK 73075

T: (800) 753-8459 – F: (877) 220-7236

[sales@ddbunlimited.com](mailto:sales@ddbunlimited.com) [www.ddbunlimited.com](http://www.ddbunlimited.com)

WEB DRAWING (NOT FOR FABRICATION)

REVISIONS		
REV.	DESCRIPTION	DATE
A	Web Drawing per DR-00419	11/10/2011
B	Update DWG reflecting new components and new DWG template.	4/29/2014
C	UPDATED WITH 2019 FORMAT	2/11/2019
D	UPDATED DRAWING WITH DOOR ROD WITH ROLLERS PER DR-02251	4/1/2020



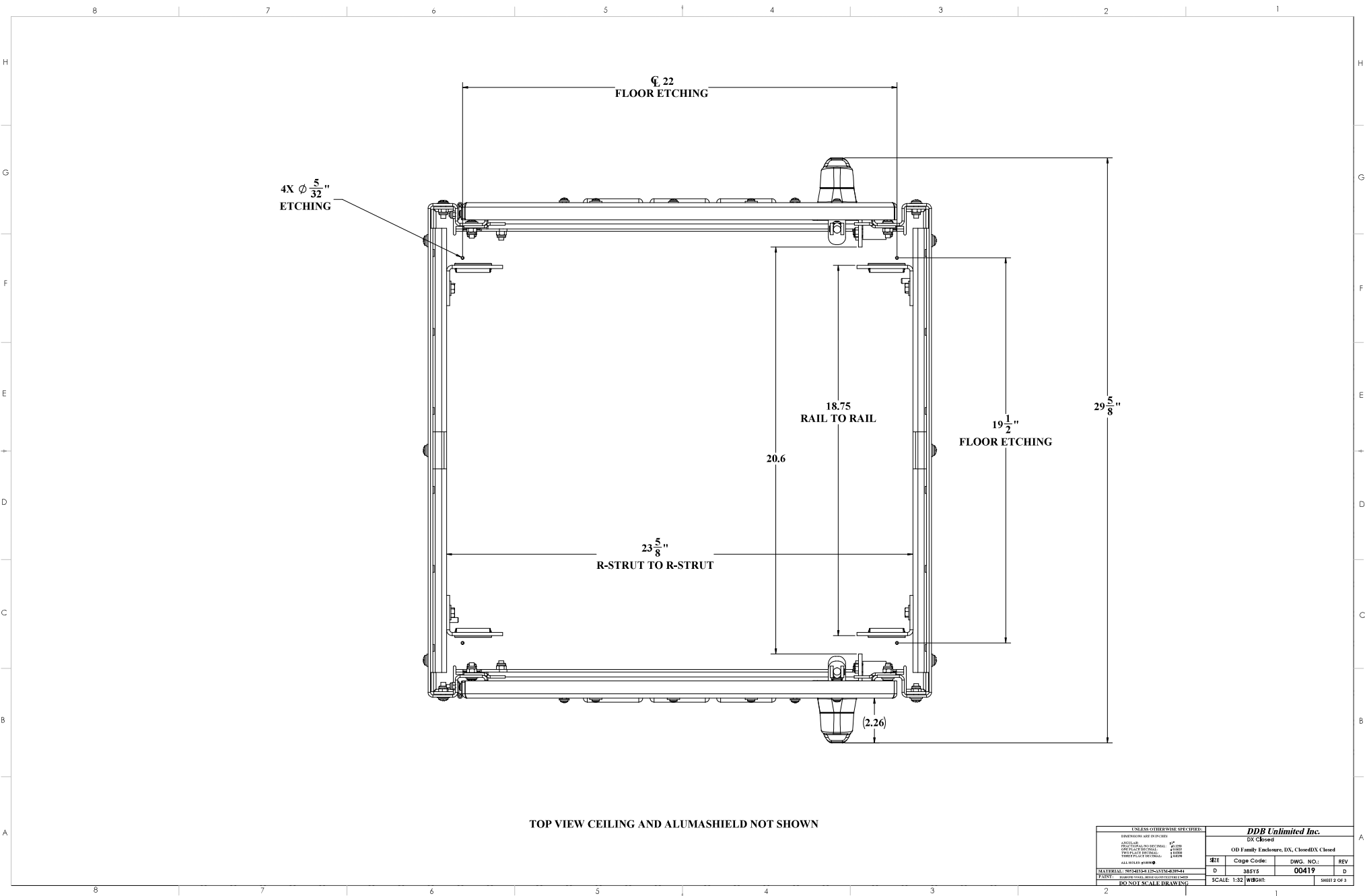
WEB DRAWING (NOT FOR FABRICATION)

UNLESS OTHERWISE SPECIFIED:			NAME DATE			DDB Unlimited Inc.		
DESCRIPTION AND IN NOTES			Model by:	0508	11/10/2011	OD Family Endnotes		
ARTICULAR			Drawn by:	Marcel	02/11/19	Enclosure, OD, 16, DX		
OD FAMILY ENDNOTE			Sales Rep:	Boys C	11/15/11	SITE		
OD FAMILY ENDNOTE			Q.A. Appr:	alshen	04/01/20	Cage Code:		
OD FAMILY ENDNOTE			Prod Mgr:	Chak	04/01/20	D		
OD FAMILY ENDNOTE			SCALE: 1:32			DWG. NO.: 00419		
OD FAMILY ENDNOTE			SHEET 1 OF 3			REV D		
OD FAMILY ENDNOTE			DO NOT SCALE DRAWING					

UNCLASSIFIED PUBLIC

File Location: (DDB)\(PDM Vault)\C:\DDB\Drawing Requests\Customers\ODD WEB DWG\OD Family WEB\DR-00419 (OD-16DX)

DDb FORM 7-1-2 REV AK 08/02/17

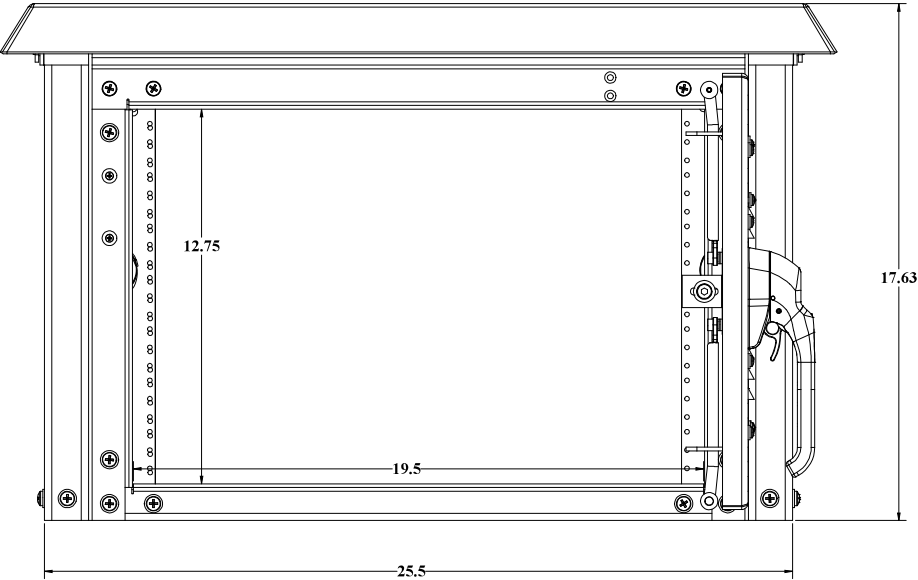


UNCLASSIFIED PUBLIC  
THE INFORMATION CONTAINED IN THIS DRAWING IS THE SOLE PROPERTY OF DDB Unlimited, INC. ANY REPRODUCTION IN PART OR AS A WHOLE WITHOUT THE WRITTEN PERMISSION OF DDB Unlimited, INC. IS PROHIBITED.

UNLESS OTHERWISE SPECIFIED:		DDB Unlimited Inc.			
DIMENSIONS ARE IN INCHES		DX Closed			
ENCLOSURE		DDB Family Enclosure, DX, Closed/DX Closed			
MATERIALS		304	304	304	304
PAINT		304	304	304	304
DO NOT SCALE DRAWING		SCALE: 1:32	WEIGHT:	SHEET 2 OF 3	

File Location: (DDB) (PDM Vault)  
C:\DDB\Drawing Requests\Customers\DDb WEB DWG\DDb Family WEB\DR-00419 (OD-14DX)\

DDB FORM 7-1-2 REV A 08/02/17



BACK VIEW GASKET NOT SHOWN

UNLESS OTHERWISE SPECIFIED:			
DIMENSIONS ARE IN INCHES			
ANGLE	1"		
DRILLING TOLERANCE	±.010		
FINISH TOLERANCE	±.010		
THREAD TOLERANCE	±.010		
WELD TOLERANCE	±.010		
ALL DIMENSIONS ARE IN INCHES			
MATERIAL: ALUMINUM 6061-T6			
FINISH: ANODIZED ALUMINUM			
DO NOT SCALE DRAWING			
DDB Unlimited Inc.			
OS-14DX			
Enduser: OD, 16, BXOD-16DX			
REV	Code Code:	DWG. NO.:	REV
D	28515	00419	D
SCALE: 1:32		SHEET 2 OF 3	

UNCLASSIFIED PUBLIC  
THE INFORMATION CONTAINED IN THIS DRAWING IS THE SOLE PROPERTY OF DDB Unlimited, INC. ANY  
REPRODUCTION IN PART OR AS A WHOLE WITHOUT THE WRITTEN PERMISSION OF DDB Unlimited, INC. IS PROHIBITED.

File Location: (DDB) (PDM Vault)  
C:\DDB\Drawing Requests\Customers\ODS WEB DWG\OD Family WEB\DR-00419 (OD-14DX)\