

# OD Series

## OD-50DX



## Why Choose OD the Series?

The OD series of enclosures are the ultimate choice for your outdoor racking requirements. Being made of our own rugged Alumiflex®, you'll find it noticeably lighter than steel, yet strong enough to rack even the heaviest equipment. When choosing the OD series, you have handpicked the highest value in American construction. The OD-50DX includes the standard features you have come to expect with DDB, incorporating the versatile strut system for adjustable racking, the security of a 3-point locking system and our patented Alumishield® solar cap to manage heat loads. For those who need more than just our standard enclosure, DDB can also make a truly customized solution with our many available options including HVAC, providing a climate-controlled environment for any electronic equipment, electrical load panels and cable entry solutions to name a few. All of this comes together to create an enclosure able to meet all of the unique needs your customers have been seeking. DDB offers a state-of-the-art design, a competitive price, benchmark lead times and a guaranteed delivery, all backed up with an industry leading 15-year warranty on every enclosure. Put DDB's substantial stock to work for you today. Contact our professional staff to assist you with your made-to-order solution.

## Application Types

- Telecommunications
- Wireless/Broadband
  - Fiber Optics
  - Back Haul
- Small Cell/DAS
- Public Safety
- Utility
- Base Station
- Military
- Trailer-Based Communications
  - Wi-Fi
  - LTEE/4G/5G



## Environmental & Safety Ratings:

- ✓ NEMA 3R (shown above)
- ✓ NEMA 4 and 4X configurable (not shown)
- ✓ OD-50 Series, ETL environmentally listed to UL 50/50E, Type 4's  
Available here: <https://www.ddbunlimited.com/new-ul-50e-listed/>
- ✓ ETL listed; Safety Requirements, UL 62368-1:2019 Ed.3, CSA C22.2

2301 S. HWY 77 Pauls Valley, OK 73075  
T: (800) 753-8459 – F: (877) 220-7236

[sales@ddbunlimited.com](mailto:sales@ddbunlimited.com) [www.ddbunlimited.com](http://www.ddbunlimited.com)



## Features

- 0.125" Aluminum Construction
- Stainless Steel External Hardware/Hinge
- 3 Point Lock System
- Heavy Duty Out-Door Construction
- Front and Rear Access
- Flexible and Scalable
- 15 Year Warranty
- Quick Shipping

## Weight and Dimensions

Approximate Exterior Enclosure Dimensions:

52"H x 28"W x 30"D

Shipping Dimensions:

32"W x 42"L - Palletized

Approximate Shipping Weight:

161 lbs.

# OD Series

## OD-50DX



### Features

1. Alumishield
2. 19" Adjustable Racking Rails, 26 RU's
3. Rear Access Door
4. Stainless Steel Door Hinge
5. 3-Point Locking System
6. Reusable Vent Filters



Installation, operating and  
safety instructions can be  
downloaded here



Scan this code for  
replacement parts



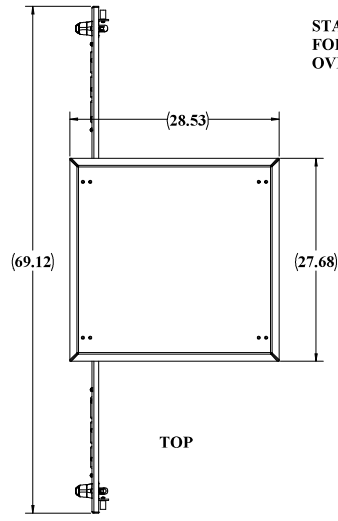
2301 S. HWY 77 Pauls Valley, OK 73075

T: (800) 753-8459 – F: (877) 220-7236

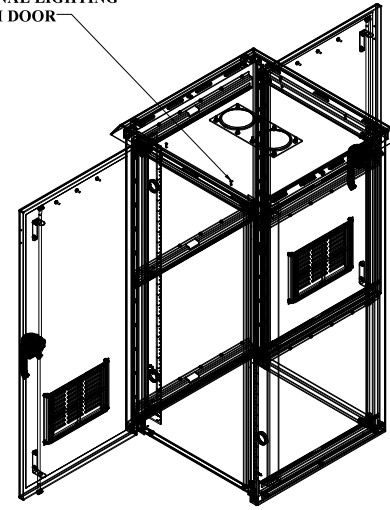
[sales@ddbunlimited.com](mailto:sales@ddbunlimited.com) [www.ddbunlimited.com](http://www.ddbunlimited.com)

WEB DRAWING (NOT FOR FABRICATION)

REVISIONS		
REV.	DESCRIPTION	DATE
A	Web Drawing per DR-00425	11/15/2011
B	Add new components and DWG template to WEB DWG per DR-00920	5/12/2014
C	UPDATED WITH 2019 FORMAT	2/25/2019
D	UPDATED DRAWING WITH DOOR RODS WITH ROLLERS PER DR-02256	4/7/2020



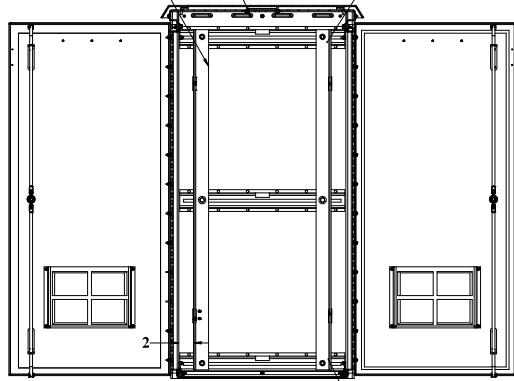
STANDOFFS STANDARD FOR OPTIONAL LIGHTING OVER EACH DOOR



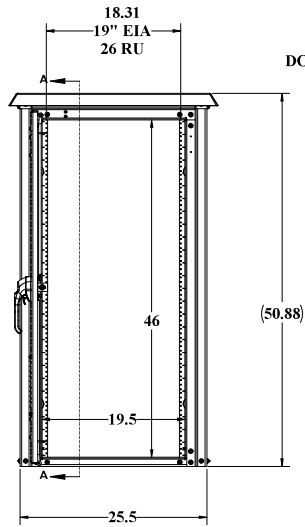
CEILING LOUVERS

FRONT RAILS STANDARD

OPTIONAL REAR SET OF RAILS



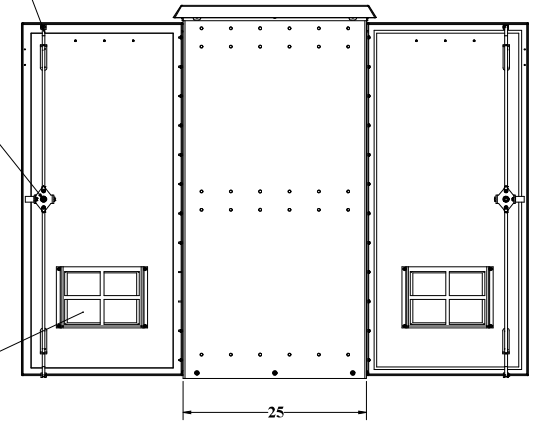
R-STRUTS FOR RAIL ADJUSTMENT



DOOR RODS WITH ROLLERS

3 POINT LOCKING

FILTERED LOUVERS



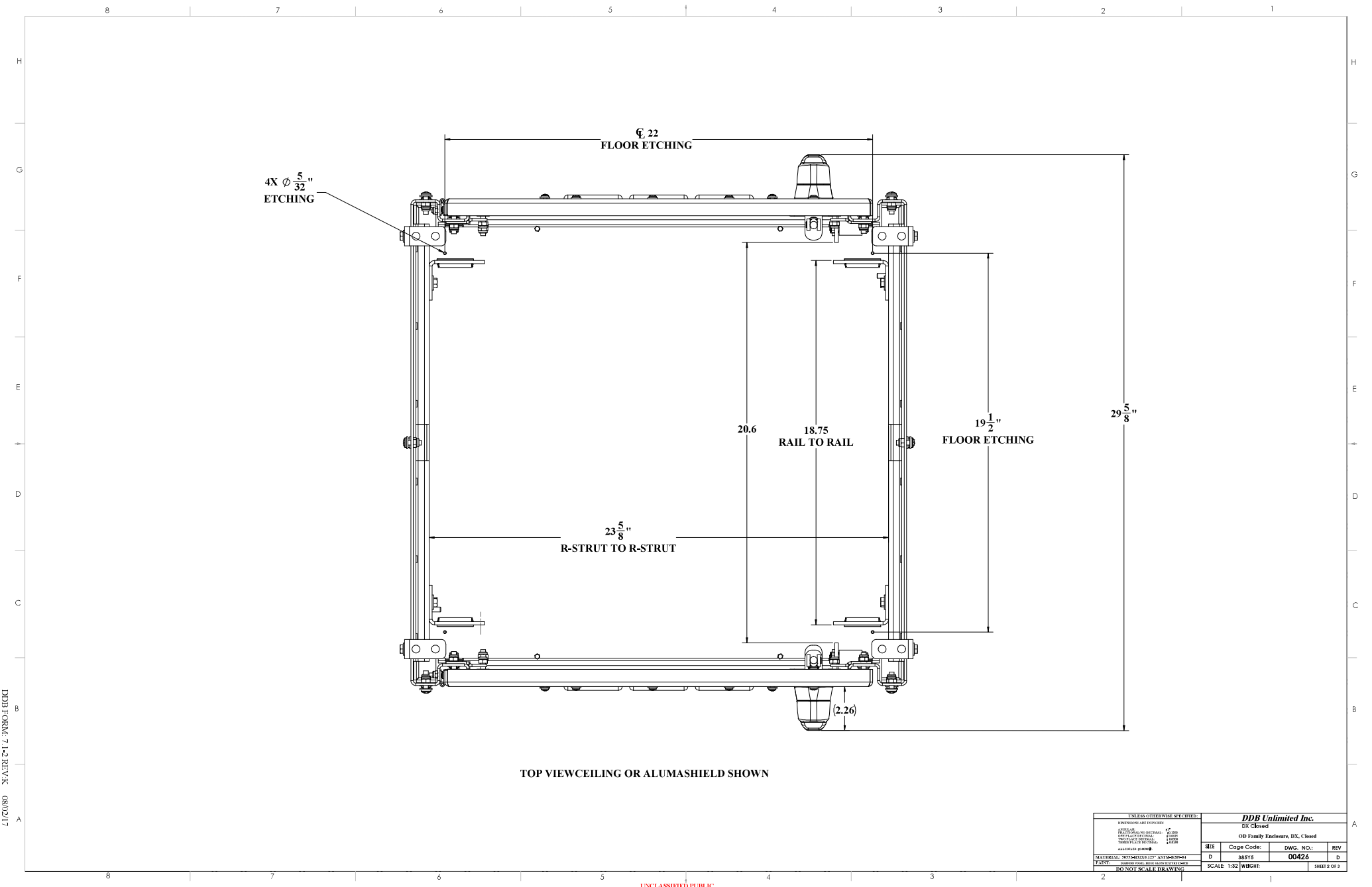
WEB DRAWING (NOT FOR FABRICATION)

UNLESS OTHERWISE SPECIFIED:		NAME	DATE	DDB Unlimited Inc.			
COMPONENTS AND FITTINGS	Model No:	0008	11/17/2018	OD Family Engineers			
APPLICABLE STANDARDS	Drawn by:	zavone	04/08/20	Enclosure, ODB, 50, EX			
DESIGN STANDARDS	Checked by:	zavone	04/08/20				
TEST STANDARDS	Sales Rep/Project Manager:	zavone	04/08/20	SHE	Cage Code:	DWG. NO.:	REV
OTHER STANDARDS	Q.A. Appr:	May	04/20/20	D	88515	00426	D
DATE OF THIS DRAWING	Prod. Mgr.:	Chick	04/21/20	SCALE: 1:32 WCH: 129 lbs. SHEET 1 OF 3			
MATERIALS: SPECIFICATIONS: PARTS LIST:	DO NOT SCALE DRAWING						

UNCLASSIFIED PUBLIC

File Location: (DDB)\EPDM Vsp\Jr\ C:\DDB\Drawing Requests\Customer\ODS WEB DWG\OD Family WEB\DR-00426 (OD-500)

DDB FORM 7.1-2 REV. 05/02/19



4X Ø 5/32"  
ETCHING

Ø 22  
FLOOR ETCHING

20.6  
18.75  
RAIL TO RAIL

19 1/2"  
FLOOR ETCHING

23 5/8"  
R-STRUT TO R-STRUT

29 5/8"

(2.26)

TOP VIEW  
CEILING OR ALUMASHIELD SHOWN

UNLESS OTHERWISE SPECIFIED:			
DIMENSIONS ARE IN INCHES			
ASSEMBLY TOLERANCES:	1"		
FINISHES:	ALUM		
DRILLING:	±0.005		
THREADS:	±0.010		
SPACING:	±0.010		
ALL DIMENSIONS PER <b>ASSEMBLY</b>			
MATERIALS: <b>ALUMINUM</b>			
FINISH: <b>ANODIZED</b>			
NO NOT SCALE DRAWING			
DDB Unlimited Inc.		DDB Unlimited Inc.	
DX Closed			
011 Family: <b>Fastmare, DX, Closed</b>			
REV	Code Code:	DWG. NO.:	REV
D	38515	00426	D
SCALE: 1:32		WEIGHT:	SHEET 2 OF 3

UNCLASSIFIED PUBLIC  
THE INFORMATION CONTAINED IN THIS DRAWING IS THE SOLE PROPERTY OF DDB Unlimited, INC. ANY REPRODUCTION IN PART OR AS A WHOLE WITHOUT THE WRITTEN PERMISSION OF DDB Unlimited, INC. IS PROHIBITED.

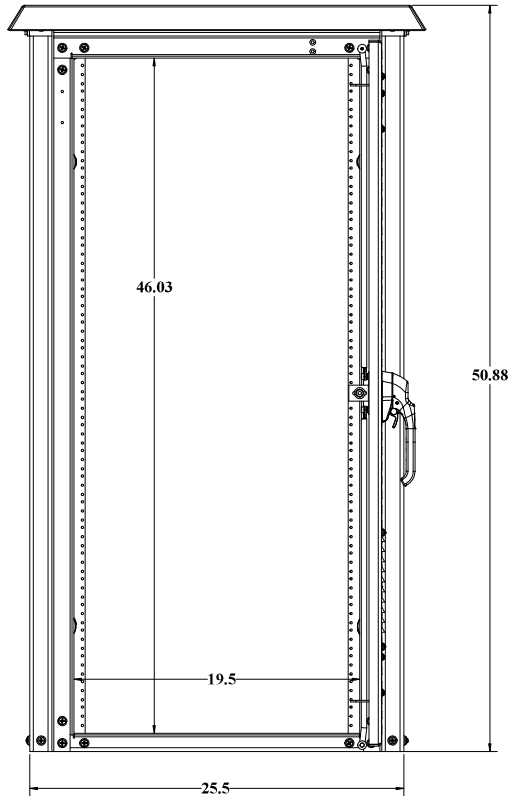
File Location: (DDB) EPDM Vault:  
C:\DDB\Drawing Requests\Customers\038 WEB DWG\038 Family WEB\DR-00426 (03-50DX)\

DDB FORM 7.1-2 REV. A (08/02/17)

8 7 6 5 4 3 2 1

H  
G  
F  
E  
D  
C  
B  
A

H  
G  
F  
E  
D  
C  
B  
A



BACK VIEW GASKET NOT SHOWN

UNLESS OTHERWISE SPECIFIED:			
DIMENSIONS ARE IN INCHES	DDB Unlimited Inc.		
ANGLE: 30° MINIMUM	OS-50DX		
FINISH: AS NOTED	Hardware: OS, SR, IX		
GLASS: AS NOTED	REV	Code Code:	DWG. NO.:
INSULATION: AS NOTED	D	28515	00426
PAINT: AS NOTED	D	28515	D
NO SCALE DRAWING		SCALE: 1:32	WEIGHT: SHEET 3 OF 3

UNCLASSIFIED PUBLIC  
THE INFORMATION CONTAINED IN THIS DRAWING IS THE SOLE PROPERTY OF DDB Unlimited, INC. ANY REPRODUCTION IN PART OR AS A WHOLE WITHOUT THE WRITTEN PERMISSION OF DDB Unlimited, INC. IS PROHIBITED.

8 7 6 5 4 3 2 1

DDB FORM 7.1-2 REV. A (08/02/17)