

OD Series

OD-78DDC



Why Choose the OD Series?

The OD series of enclosures are the ultimate choice for your outdoor racking requirements. Being made of our own rugged Alumiflex®, you'll find it noticeably lighter than steel, yet strong enough to rack even the heaviest equipment. When choosing the OD series, you have handpicked the highest value in American construction. The OD-78DDC includes the standard features you have come to expect with DDB, incorporating the versatile rail strut (R-Strut) system for adjustable racking, the security of a 3- point locking system and our patented Alumishield® solar cap to manage heat loads. For those who need more than just our standard enclosure, DDB can also make a truly customized solution with our many available options including HVAC, providing a climate-controlled environment for any electronic equipment, electrical load panels and cable entry solutions to name a few. All of this comes together to create an enclosure able to meet all of the unique needs your customers have been seeking. DDB offers a state-of-the-art design, a competitive price, benchmark lead times and a guaranteed delivery, all backed up with an industry leading 15-year warranty on every enclosure. Put DDB's substantial stock to work for you today. Contact our professional staff to assist you with your made-to-order solution.

Application Types

- Telecommunications
- Wireless/Broadband
- Fiber Optics
- Back Haul
- Small Cell/DAS
- Public Safety
- Utility
- Base Station
- Military
- Trailer-Based Communications
- Wi-Fi
- LTEE/4G/5G



Environmental & Safety Ratings:

- ✓ NEMA 3R, IP 24 (shown above)
- ✓ NEMA 4 and 4X, IP 66 configurable , (not shown)
- ✓ OD-78 Series, ETL environmentally listed to UL 50/50E, Type 4's
Available here: <https://www.ddbunlimited.com/new-ul-50e-listed/>
- ✓ ETL listed; Safety Requirements, UL 62368-1:2019 Ed.3, CSA C22.2

2301 S. HWY 77 Pauls Valley, OK 73075
T: (800) 753-8459 – F: (877) 220-7236

sales@ddbunlimited.com www.ddbunlimited.com



Features

- 0.125" Aluminum Construction
- Stainless Steel External Hardware/Hinge
- 3 Point Lock System
- Heavy Duty Out-Door Construction
- Front and Rear Access
- Custom Colors Available
- Cream Powder-Coat in Stock
- Flexible and Scalable
- 15 Year Warranty
- Quick Shipping

Weight and Dimensions

Approximate Exterior Enclosure Dimensions:

79"H x 28"W x 39"D

Shipping Dimensions:

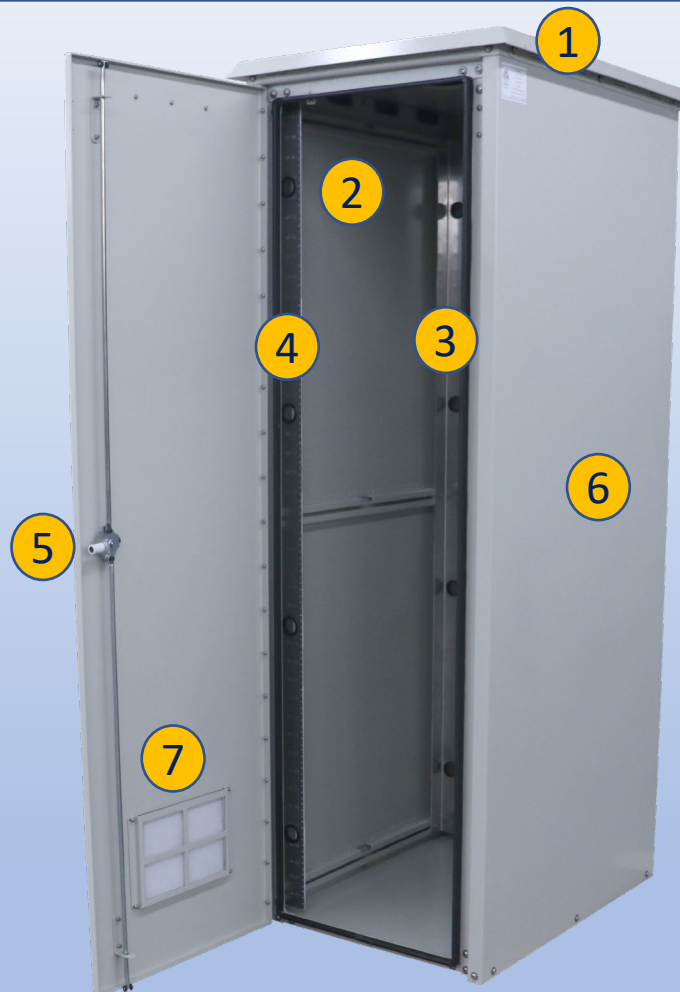
32"W x 42"L- Palletized

Approximate Shipping Weight:

238 lbs.

OD Series

OD-78DDC



Features

1. Alumishield
2. Front and Rear 19" Adjustable Racking Rails, 84 RU's
3. Rear Access Door
4. Stainless Steel Door Hinge
5. 3 Point Locking System
6. Powder-Coat Cream
7. Reusable Vent Filters



Installation, operating and safety instructions can be downloaded here



Scan this code for replacement parts



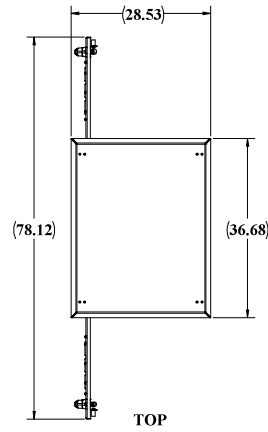
2301 S. HWY 77 Pauls Valley, OK 73075

T: (800) 753-8459 – F: (877) 220-7236

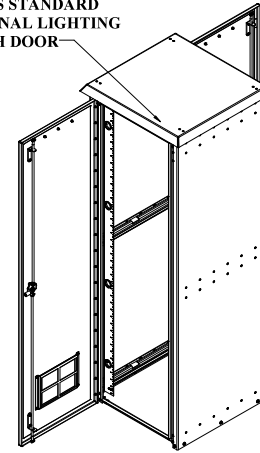
sales@ddbunlimited.com www.ddbunlimited.com

WEB DRAWING (NOT FOR FABRICATION)

REVISIONS		
REV.	DESCRIPTION	DATE
A	Web Drawing per DR-00425	11/15/2011
B	Add new components and DWG template to WEB DWG per DR-00927	5/12/2014
C	UPDATED TO 2019 FORMAT	3/4/2019
D	UPDATED DRAWING WITH DOOR RODS WITH ROLLERS PER DR-02263	4/17/2020

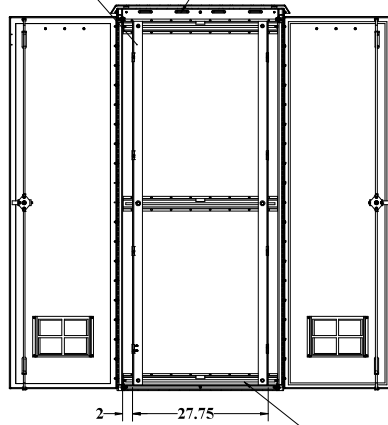


STANDOFFS STANDARD FOR OPTIONAL LIGHTING OVER EACH DOOR

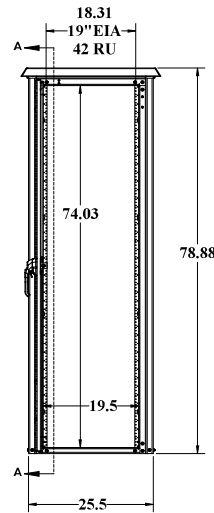


FRONT AND REAR RAIL STANDARD ON DD

CEILING LOUVERS



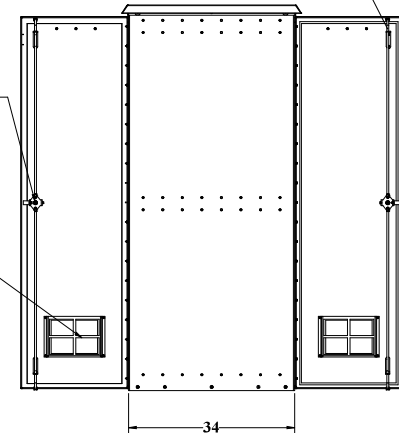
R-STRUTS FOR RAIL ADJUSTMENTS



DOOR RODS WITH ROLLERS

3 POINT LOCKING

FILTERED VENTS



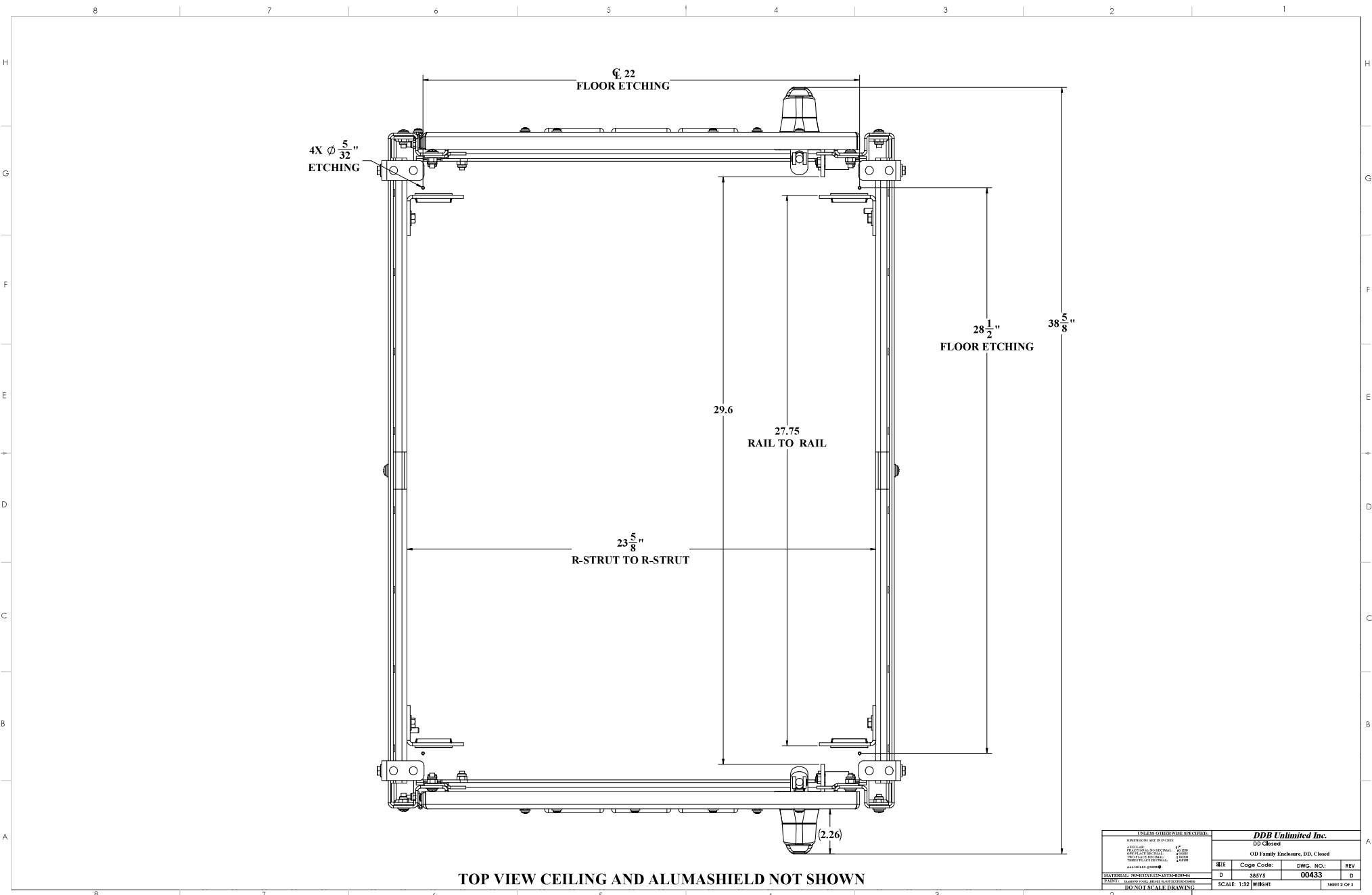
WEB DRAWING (NOT FOR FABRICATION)

UNLESS OTHERWISE SPECIFIED:		NAME	DATE	DDB Unlimited Inc.		
COMPONENTS AND FITTINGS	Model by: 0008	11/15/2011	OD Family Endnotes			
APPLICABLE	Drawn by: Marv C	09/04/19	Enclosure, ODB, 7K, DID			
FOR WORKING	Check by: Marv C	11/16/11	Sales Rep: Boyce C			
FOR CONSTRUCTION	Q.A. Appr: Marv	04/20/20	SHE	Cage Code:	DWG. NO.:	REV
FOR ASSEMBLY	Prod. Mgr: Chas	04/21/20	D	38515	00433	D
MATERIAL: 304 STAINLESS STEEL PER DR-00941	Scale: 1:32		WEEK: 203 lbs.		SHEET: 1 OF 3	
FANSE: HANSON/VEED/WEB/1.1.2/REV/F/05/02/19						
DO NOT SCALE DRAWING						

UNCLASSIFIED PUBLIC

File Location: (DDB)\EPDM_Vse\Jr
C:\DDI\Drawing Requests\Customer\ODM WEB DWG\OD Family WEB\DR-00433 (OD-782D

DDB FORM 7.1-2 REV.F 05/02/19



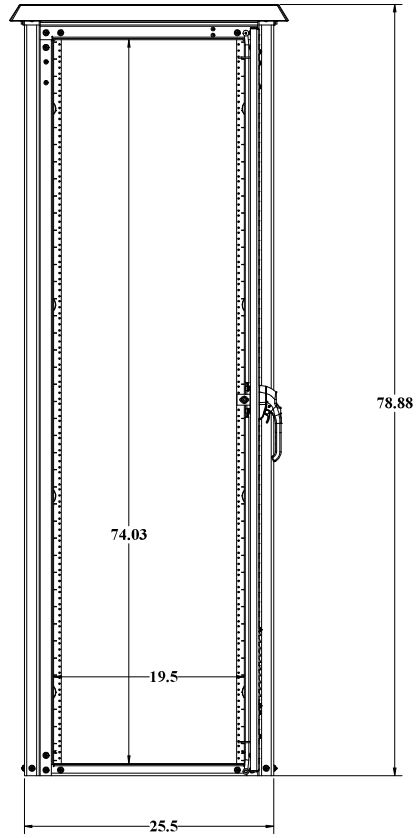
DDB FORM 7.1-2 REV. A (08/02/17)

UNLESS OTHERWISE SPECIFIED:			
DIMENSIONS ARE IN INCHES			
ASSEMBLY TOLERANCES:	1"		
FINISH SURFACE:	0.005		
DRILLING TOLERANCE:	0.005		
THREAD PITCH:	1/16"		
THREAD PITCH:	1/8"		
ALL DIMENSIONS:	±0.005		
MATERIAL: ALUMINUM 6061-T6	ALUMINUM		
PAINT: POLYURETHANE	PAINT		
DO NOT SCALE DRAWING			
DD Unlimited Inc.			
DD Closed			
01 Family Kitchens, DD, Closed			
REV	Code Code:	DWG. NO.:	REV
D	38515	00433	D
SCALE: 1:32		WEIGHT:	SHEET 2 OF 3

UNCLASSIFIED PUBLIC
 THE INFORMATION CONTAINED IN THIS DRAWING IS THE SOLE PROPERTY OF DDB Unlimited, INC. ANY
 REPRODUCTION IN PART OR AS A WHOLE WITHOUT THE WRITTEN PERMISSION OF DDB Unlimited, INC. IS PROHIBITED.

File Location: (DD) (EPDM Vault)
 C:\DD\Drawing Request\Customers\018 WEB DWG\CD Family WEB\DR-00433 (CD-780D)\

WEB DRAWING (NOT FOR FABRICATION)



BACK VIEW GASKET NOT SHOWN

WEB DRAWING (NOT FOR FABRICATION)

UNLESS OTHERWISE SPECIFIED:		DDB Unlimited Inc.		
DIMENSIONS ARE IN INCHES		OD-78DD		
ASSEMBLY TOLERANCES:	1" 1/4	Inch/mm OD, 78, DD		
INTERNAL TOLERANCES:	0.005	REV	Code Code:	DWG. NO.:
EXTERNAL TOLERANCES:	0.005	D	0433	00433
FINISH:	AS SUPPLIED	D	D	D
MATERIAL SPECIFICATION:	304SS	SCALE: 1:32		WEIGHT:
NO NOT SCALE DRAWING		SHEET 2 OF 3		

UNCLASSIFIED PUBLIC
THE INFORMATION CONTAINED IN THIS DRAWING IS THE SOLE PROPERTY OF DDB Unlimited, INC. ANY REPRODUCTION IN PART OR AS A WHOLE WITHOUT THE WRITTEN PERMISSION OF DDB Unlimited, INC. IS PROHIBITED.

File Location: (DDB)EPDM Vault)
C:\DDB\Drawing Request\Customers\Jal Web DWG\CD Family\Web\DR-00433 (OD-78DD)\

DDB FORM 7.1-2 REV A (08/02/17)