



ISO 9001 & 27001
Certified company

OD-UL Series

OD-30DXC-UL50

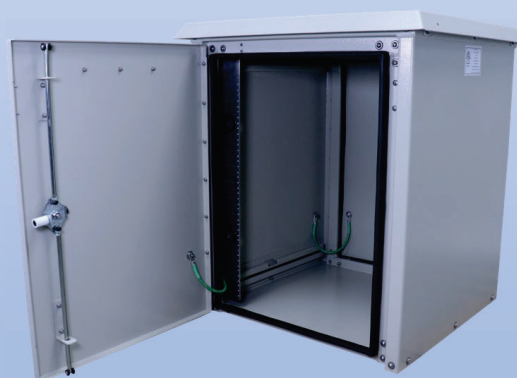


Why Choose the OD-UL Series?

The OD-UL series of enclosures are the ultimate choice for your outdoor racking requirements. Being made of our own rugged Alumiflex®, you'll find it noticeably lighter than steel, yet strong enough to rack even the heaviest equipment. When choosing the OD-UL series, you have handpicked the highest value in American construction. The OD-UL series includes the standard features you have come to expect with DDB, incorporating the versatile strut system for adjustable racking, the security of a 3- point locking system, our patented Alumishield® solar cap to manage heat loads, UL listed grounding straps, & UL listed gasketing. For those who need more than just our standard enclosure, DDB can also make a truly customized solution with our many available options including HVAC, providing a climate-controlled environment for any electronic equipment, electrical load panels and cable entry solutions to name a few. All of this comes together to create an enclosure able to meet all of the unique needs your customers have been seeking. DDB offers a state-of-the-art design, a competitive price, benchmark lead times and a guaranteed delivery, all backed up with an industry leading 15-year warranty on every enclosure. Put DDB's substantial stock to work for you today. Contact our professional staff to assist you with your made-to-order solution.

Application Types

- Telecommunications
- Wireless/Broadband
- Fiber Optics
- Back Haul
- Small Cell/DAS
- Public Safety
- Utility
- Base Station
- Military
- Trailer-Based Communications
- Wi-Fi
- LTEE/4G/5G



Environmental & Safety Ratings:

- ✓ ETL environmentally listed to UL 50/50E, IP 66, NEMA Type 4
- ✓ ETL listed; Safety Requirements, UL 62368-1:2019 Ed.3, CSA C22.2



Features

- 0.125" Aluminum Construction
- Stainless Steel External Hardware/Hinge
- Fully Welded Construction
- 3 Point Lock System
- Front and Rear Access
- Custom Colors Available
- Cream Powder-Coat in Stock
- Flexible and Scalable
- 15 Year Warranty
- Quick Shipping
- Water/Rain/Sleet/Dust Tight

Weight and Dimensions

Approximate Exterior Enclosure Dimensions:

32"H x 28"W x 30"D

Shipping Dimensions:

32"W x 42"L - Palletized

Approximate Shipping Weight:

119 lbs.

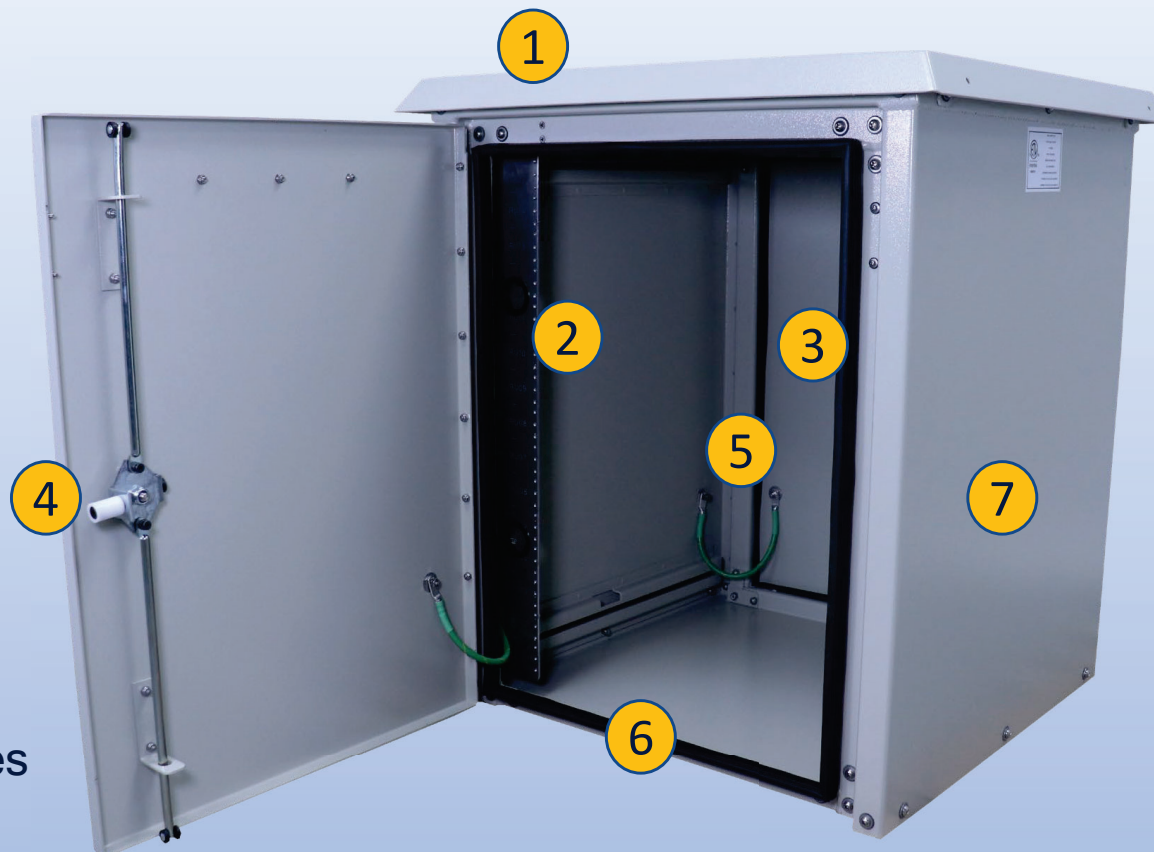
2301 S. HWY 77 Pauls Valley, OK 73075

T: (800) 753-8459 – F: (877) 220-7236

sales@ddbunlimited.com www.ddbunlimited.com

OD-UL Series

OD-30DXC-UL50



Features

1. Alumishield
2. 19", Adjustable, Racking Rails, 15 RU's
3. Rear Access Door
4. 3-Point Locking System
5. Ground (bonding) Strap & grounding studs - UL Listed
6. Frame Gasket, vulcanized corners - UL Listed
7. Powder coat, cream



Installation, operating and
safety instructions can be
downloaded here



Scan this code for
replacement parts

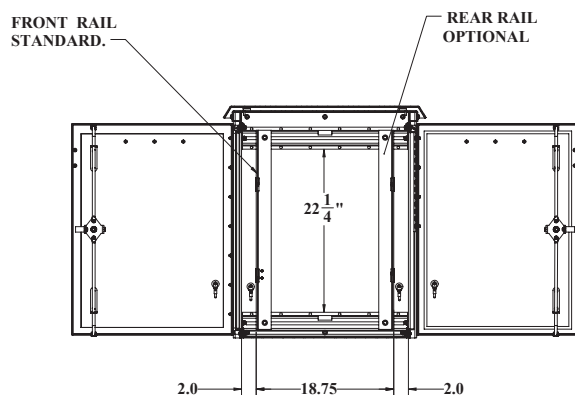
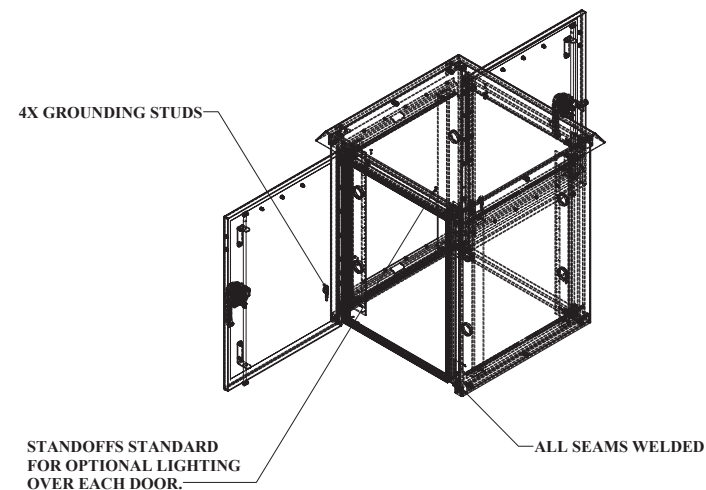
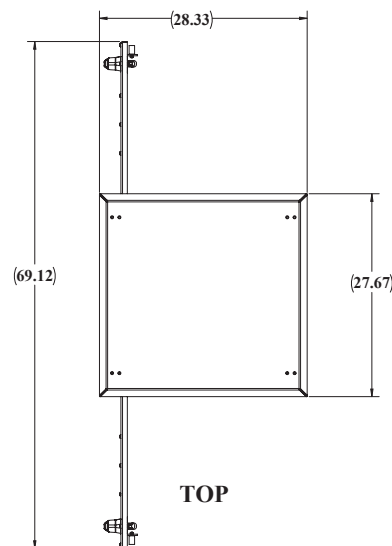


2301 S. HWY 77 Pauls Valley, OK 73075

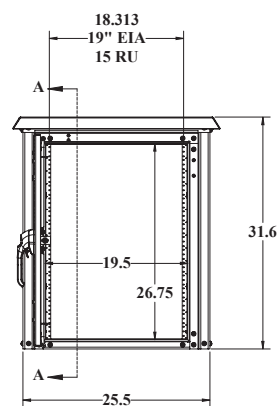
T: (800) 753-8459 – F: (877) 220-7236

sales@ddbunlimited.com www.ddbunlimited.com

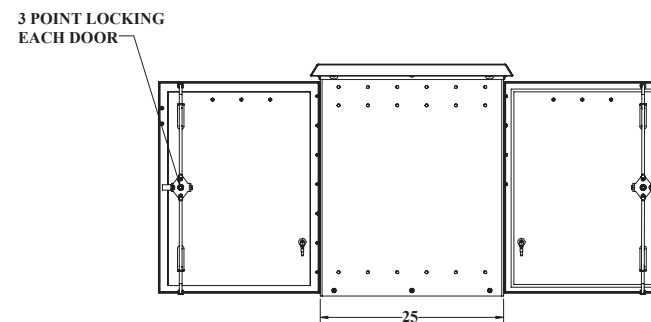
REVISIONS		
REV.	DESCRIPTION	DATE
A	CREATED WEBSITE DRAWING OD-30DX-UL50	9/12/2018
B	UPDATED SHEET FORMAT	3/28/2022



SECTION A-A



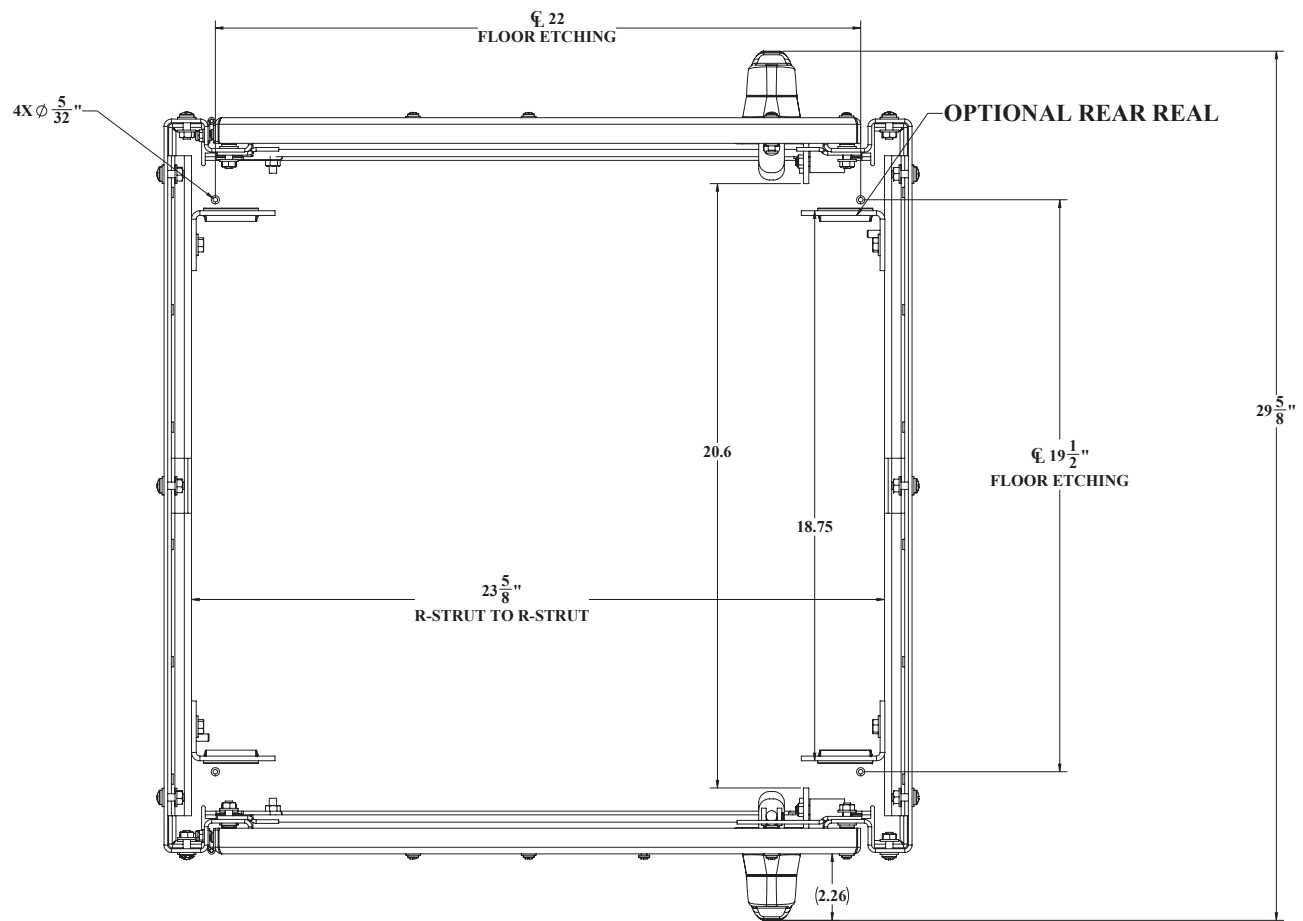
FRONT



RIGHT SIDE

WEB DRAWING (NOT FOR FABRICATION)

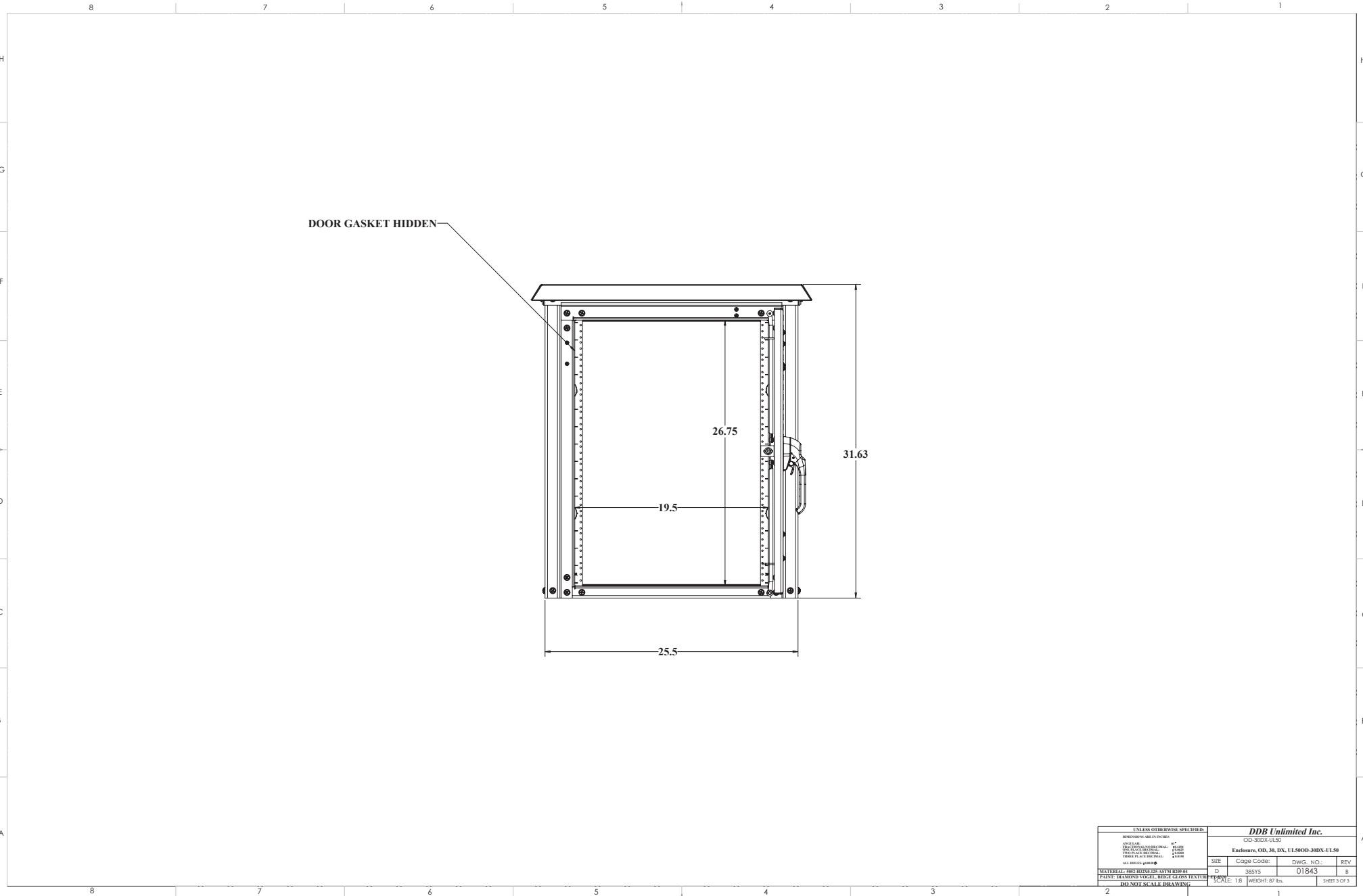
UNLESS OTHERWISE SPECIFIED:		NAME		DATE		DDB Unlimited Inc.	
DIMENSIONS ARE IN INCHES		Model by:		DOB		09/13/18	
ANGLER:		Drawn by:		Marvco		09/13/18	
FRAC-TION: 1/8" DECIMAL:		Sales Rep:		com		09/25/18	
1/16" = 0.0625"		Q.A. Appr.:		troy		01/29/19	
1/32" = 0.03125"		Prod. Mgr.:		Clark		01/29/19	
1/64" = 0.015625"		SCALE:		1:8		WEIGHT: 87 lbs.	
ALL HELLAS GROUND		D		385Y5		01843	
BATHING: 100% BATHING: 61227		S		1:8		01843	
MATERIAL: 5082-5023-125-5024-8209-64		D		385Y5		01843	
PAINT:		D		385Y5		01843	
COUNT NUMBER:		D		385Y5		01843	
SHEET 1 OF 1		D		385Y5		01843	



TOP VIEW CEILING AND ALUMASHIELD NOT SHOWN

UNCLASSIFIED PUBLIC

UNLESS OTHERWISE SPECIFIED:		DDB Unlimited Inc.			
DIMENSIONS ARE IN INCHES		CO-OK-Closed			
MATERIALS		Exhaust: OP, 3R, DX, UL500B-DX-Closed			
FINISHES		SIZE	Cage Code:	DWG. NO.:	REV
PAINT: BAKING VOCAL, BEGG GLOSS TEXTURE		D	38515	01843	S
DO NOT SCALE DRAWING		SCALE: 1/8"	WEIGHT: 87 lbs.	SHEET 2 OF 3	



UNCLASSIFIED PUBLIC

UNLESS OTHERWISE SPECIFIED:		DDB Unlimited Inc.			
DIMENSIONS ARE IN INCHES		CO-300X-UL50			
MATERIALS		Enduse: OP, 30, DX, UL50DB-300X-UL50			
FINISHES		SIZE	Cage Code:	DWG. NO.:	REV
PAINTS		D	385YS	01843	S
GLASS		SCALE: 1/8"	WEIGHT: 87 lbs.	SHEET 3 OF 3	
DO NOT SCALE DRAWING		2	1		