

Wide Cabinet Base

WCB12-DXW

Why Choose the WCB series for your WOD enclosure?

Does your single outdoor enclosure need a lift? Literally? Do you need a larger footprint for your HVAC unit? Is it dragging on the pad when you open the door? When it comes to pad mounting, working with cabling or power underneath your enclosure, or if you simply need your enclosure to sit on top of the snow drifts instead of under it, look no further than DDB's extensive line of wide enclosure bases for your WOD enclosure! All enclosure bases can be installed onto your enclosure by our professional in-house technicians guaranteeing a perfect fit every time, with an additional benefit of saving you time and money allowing you to focus on what is important. Contact our professional Sales staff to assist you with your made-to-order solution!

Application Types

WOD-16DXW
WOD-30DXW
WOD-50DXW
WOD-62DXW
WOD-78DXW



Features

- .125" Fully welded construction
- Welded corner brackets inside
- Flexible and Scalable
- 15 Year Warranty
- Quick Shipping
- Includes:
- ½" Mounting Hardware

Weight and Dimensions

- Approximate Exterior Dimensions:
29.5"W x 23"D x 12" H
- Shipping Dimensions:
25" x 25" x 13" Boxed
- Approximate Shipping Weight:
25 lbs.

2301 S. HWY 77 Pauls Valley, OK 73075
T: (800) 753-8459 – F: (877) 220-7236

sales@ddbunlimited.com www.ddbunlimited.com

Wide Cabinet Base

WCB12-DXW



Features

1. Front access window
2. Threaded mounting for ½” bolts
3. Four bottom mounting holes for concrete pad installation
4. Powder coat Arctic White, textured; 1000 hours salt fog rated
5. Welded corner gussets for added support
6. Optional 2OD mounting feet for pad mounting

2301 S. HWY 77 Pauls Valley, OK 73075

T: (800) 753-8459 – F: (877) 220-7236

sales@ddbunlimited.com www.ddbunlimited.com

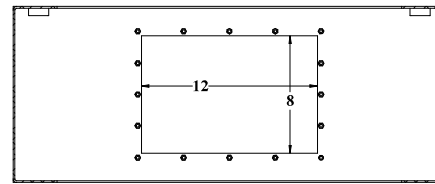
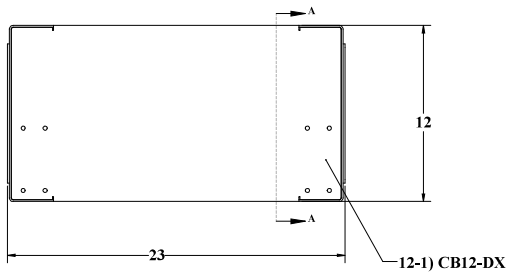
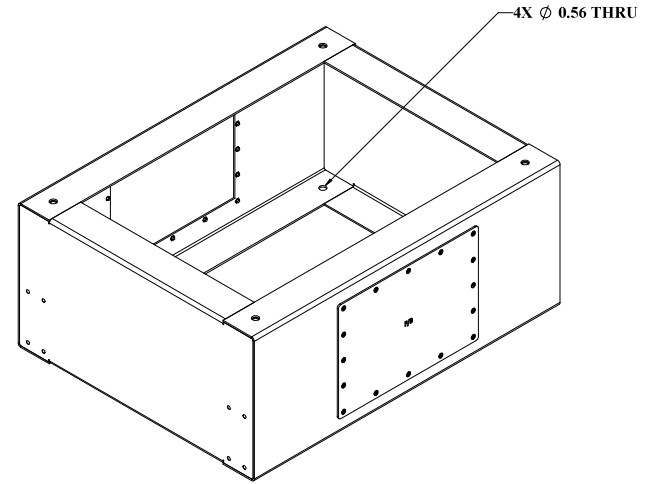
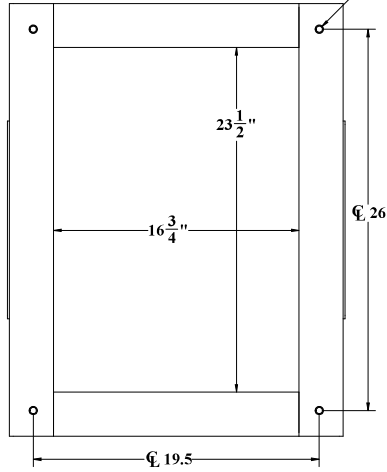
Scan this code to
visit our online store



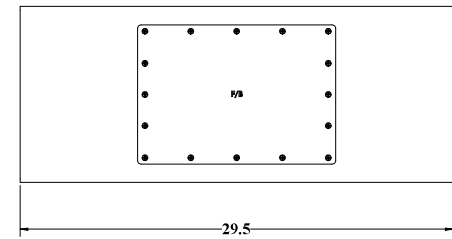
WEB DRAWING (NOT FOR FABRICATION)

REVISIONS		
REV.	DESCRIPTION	DATE
A	WCBI2-DX WEBSITE DRAWING	6/11/2020

- ∅ 0.42 THRU
- 1/2-13 UNC THRU
- ∅ 0.5 X 90°, NEAR SIDE
- ∅ 0.5 X 90°, FAR SIDE



WCBI2-DX



WEB DRAWING (NOT FOR FABRICATION)

UNLESS OTHERWISE SPECIFIED:		NAME	DATE	DDB Unlimited Inc.		
CONSTRUCTION LINE OR HATCH	Model by:	MMW		WCBI2		
APPROVAL	Drawn by:	Marv5	06/11/20	CB12-DX-W3D		
DATE	Scale:			SHEET	Cage Code:	DWG. NO.:
DATE	Q.A. Appr:	MMW	06/16/20	D	88515	02353
DATE	Prod. Mgr.:	CM6K	06/17/20			
MATERIAL: 304 STAINLESS STEEL	Checked by:			SCALE: 1:4	WEIGHT: 22 lbs.	SHEET 1 OF 1
FINISH: POLISHED						

UNCLASSIFIED - PUBLIC

File Location: (DDB) (EPDM) Vault | C:\DDB\Drawing Requests\Customer\DDB WEB DWG\kbase\WCBI2-DX\WCBI2-DX

DDB FORM 7.1-2 REV. 05/02/19