



Why Choose the 20D Series?



Features

15 Year Warranty

0.125" Aluminum Construction

3 Point Lock System

Heavy Duty Out-Door Construction

Front and Rear Access

Standard Lifting Hooks

Stainless Steel External Hardware/Hinge

Cream Powder-Coat, Standard

Quick Shipping

Weight and Dimensions

Approximate Exterior Enclosure Dimensions:

32"H x 65"W x 39"D

Shipping Dimensions:

40"H x 84"W x 54"D- Palletized

Approximate Shipping Weight:

363 lbs.

When a single bay solution just isn't sufficient, the 20D series enclosures are ideal. Constructed of our own rugged Alumiflex®, it is noticeably lighter than steel yet strong enough to rack the heaviest equipment. The 20D-30DDC includes a number of standard features, such as an adjustable racking system with a versatile rail strut system (R-Strut), a 3-point locking system for security, a reversible rack system for 19" and 23" applications, lifting hooks for easy maneuvering into place, wind locks to secure doors safely when they are open, and our patented Alumishield® solar cap for managing heat loads. Furthermore, DDB offers an array of customizable choices, which include climate control (HVAC), electrical load panels, and cable entry solutions. These possibilities combine to produce an enclosure that can be customized to meet the specific needs that your site and clients may require. The 20D undoubtedly closes the gap between single-bay enclosures and larger building "hut" solutions, giving you the flexibility to meet any need in the field without the required stamps or inspections that traditional "huts" do. With an industry-leading 15-year warranty on every enclosure, DDB provides cutting-edge design, competitive pricing, benchmark lead times, and guaranteed delivery. Whether you require a custom enclosure or something from our substantial stock, our professional staff is here to help you today.

Application Types

Telecommunications Wireless/
Broadband Fiber Optics
Back Haul
Public Safety
Utility
Base Station
Military
Trailer-Based Communications
Wi-Fi
LTEE/4G/5G



Environmental & Safety Ratings:

- ✓ NEMA 3R (shown above)
- ✓ NEMA 4 and 4X configurable (not shown)

20D Series

20D-30DDC



Features

1. Alumishield
2. 19" and 23" Adjustable Racking Rails
3. 3 Point Locking System
4. Stainless Steel Door Hinge
5. Powder-Coat Cream
6. Wind Locks
7. Rear Door Access
8. Reusable Filters
9. Heavy Duty 0.160" Doors

2301 S. HWY 77 Pauls Valley, OK 73075
T: (405)-665-2876

sales@ddbunlimited.com www.ddbunlimited.com

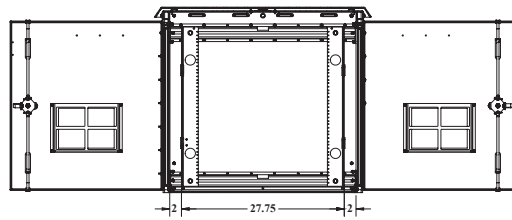
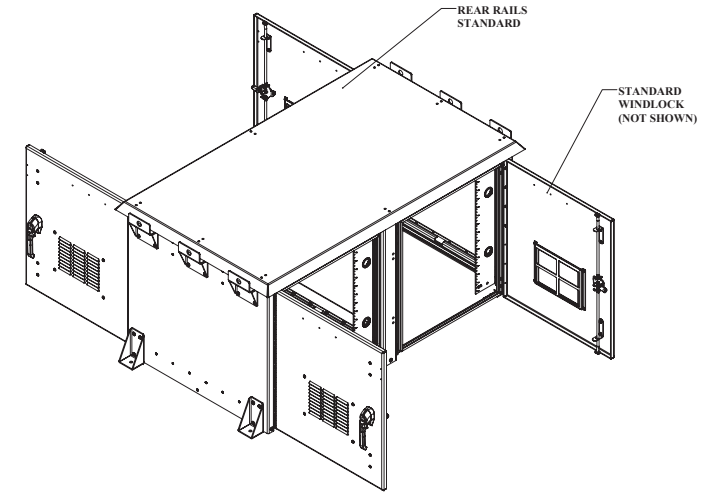
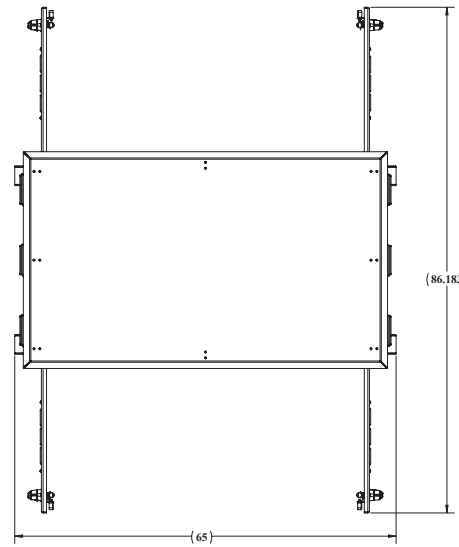
Scan this code for
Climate Control



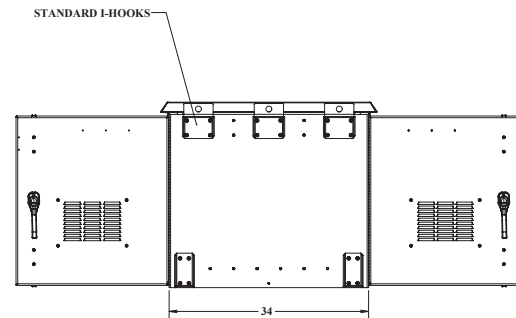
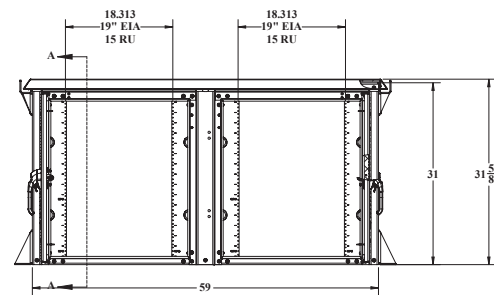
Scan this code for
Accessories



REVISIONS		
REV.	DESCRIPTION	DATE
A	Initial Release per DR-00960	5/28/2014
B	UPDATED FORMAT	11/17/2020

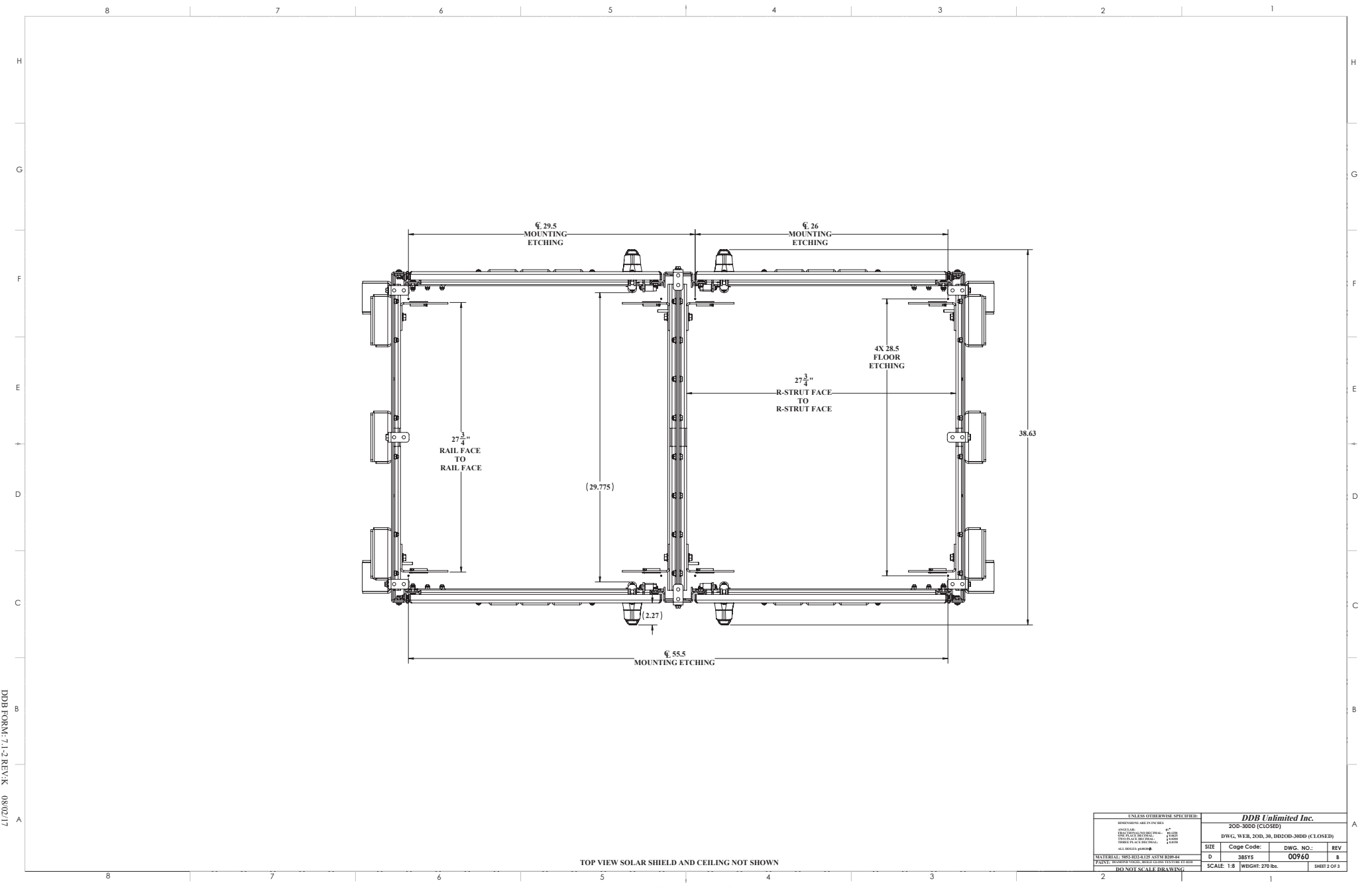


SECTION A-A
SCALE 1: 10



UNLESS OTHERWISE SPECIFIED:		DDB Unlimited Inc.			
DIMENSIONS ARE IN INCHES		23D-38DD			
MATERIAL	FINISH	DWG. NO.: DR23D-38DD			
STEEL	POUR	SIZE	CODE	DWG. NO.	REV
14 GA	14 GA	D	38YS	00960	8
ALL DIMENSIONS PER	SYSTEM DRAWING	SCALE 1:8 WEIGHT 270 lbs. SHEET 1 OF 3			
PAINTE PERMANENTLY MARKED TO IDENTIFY BY PART		DDB NOT SCALE DRAWING			

UNCLASSIFIED PUBLIC



TOP VIEW SOLAR SHIELD AND CEILING NOT SHOWN

UNCLASSIFIED PUBLIC

UNLESS OTHERWISE SPECIFIED:		DDB Unlimited Inc.			
DIMENSIONS ARE IN INCHES		200-3800 (CLOSED)			
MATERIALS UNLESS OTHERWISE SPECIFIED:		DWG. NO. 200-3800-3800 (CLOSED)			
STEEL	1/8"	SIZE	Code Code:	DWG. NO.:	REV
ALUMINUM	1/8"	D	385YS	00960	8
PAINT	AS PER SPEC	SCALE	1:8	WEIGHT	270 lbs.
DRAWN BY: [Name]		SHEET 2 OF 3			

DDB FORM: 7.1-2-REVAK 08/02/17

