



Why Choose the 2OD Series?

When a single bay solution just isn't sufficient, the 2OD series enclosures are ideal. Constructed of our own rugged Alumiflex®, it is noticeably lighter than steel yet strong enough to rack the heaviest equipment. The 2OD-62DDXC includes a number of standard features, such as an adjustable racking system with a versatile rail strut system (R-Strut), a 3-point locking system for security, a reversible rack system for 19" and 23" applications, lifting hooks for easy maneuvering into place, wind locks to secure doors safely when they are open, and our patented Alumishield® solar cap for managing heat loads. Furthermore, DDB offers an array of customizable choices, which include climate control (HVAC), electrical load panels, and cable entry solutions. These possibilities combine to produce an enclosure that can be customized to meet the specific needs that your site and clients may require. The 2OD undoubtedly closes the gap between single-bay enclosures and larger building "hut" solutions, giving you the flexibility to meet any need in the field without the required stamps or inspections that traditional "huts" do. With an industry-leading 15-year warranty on every enclosure, DDB provides cutting-edge design, competitive pricing, benchmark lead times, and guaranteed delivery. Whether you require a custom enclosure or something from our substantial stock, our professional staff is here to help you today.



Features

- 15 Year Warranty
- 0.125" Aluminum Construction
- 3 Point Lock System
- Heavy Duty Out-Door Construction
- Front and Rear Access
- Standard Lifting Hooks
- Stainless Steel External Hardware/Hinge
- Cream Powder-Coat, Standard
- Quick Shipping

Weight and Dimensions

Approximate Exterior Enclosure Dimensions:

64"H x 65"W x 47"D

Shipping Dimensions:

72"L x 82"W x 54"D - Palletized

Approximate Shipping Weight:

512 lbs.

Application Types

- Telecommunications
- Wireless/Broadband
- Fiber Optics
- Back Haul
- Public Safety
- Utility
- Base Station
- Military
- Trailer-Based Communications
- Wi-Fi
- LTEE/4G/5G



Environmental & Safety Ratings:

- ✓ NEMA 3R (shown above)
- ✓ NEMA 4 and 4X configurable (not shown)

2301 S. HWY 77 Pauls Valley, OK 73075

T: (405)-665-2876

sales@ddbunlimited.com www.ddbunlimited.com

20D Series

20D-62DDXC



Features

1. Alumishield
2. 19" and 23" Adjustable Racking Rails
3. 3 Point Locking System
4. Stainless Steel Door Hinge
5. Powder-Coat Cream
6. Wind Locks
7. Rear Access Door
8. Reusable Filters
9. Heavy Duty 0.160" Doors

2301 S. HWY 77 Pauls Valley, OK 73075

T: (405)-665-2876

sales@ddbunlimited.com www.ddbunlimited.com

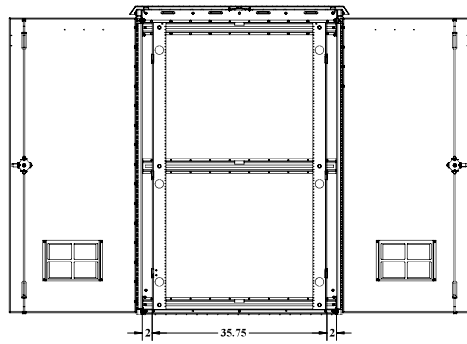
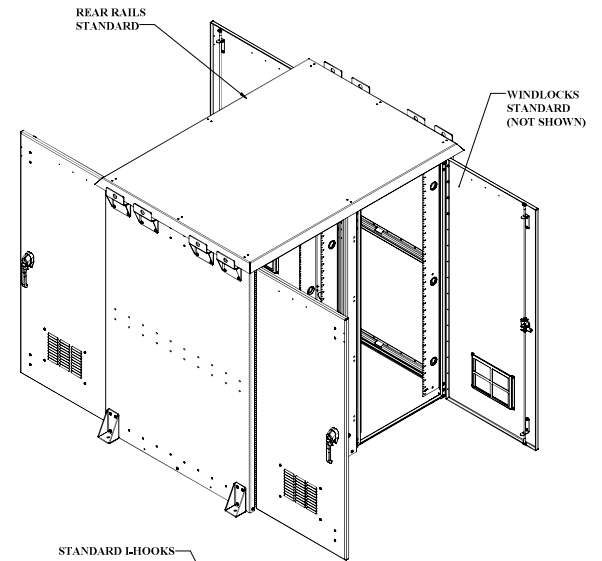
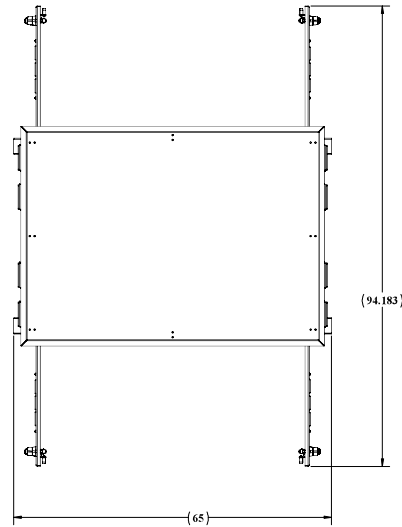
Scan this code for
Climate Control



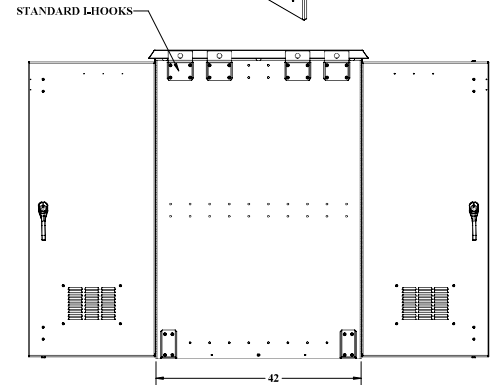
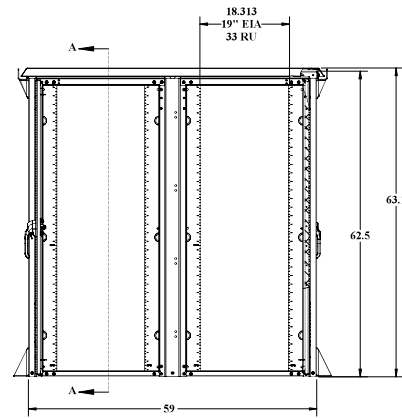
Scan this code for
Accessories



REVISIONS		
REV.	DESCRIPTION	DATE
A	Initial Release per DR-00968	5/28/2014
B	UPDATE TO NEW FORMAT	11/24/2020



SECTION A-A
SCALE 1:12

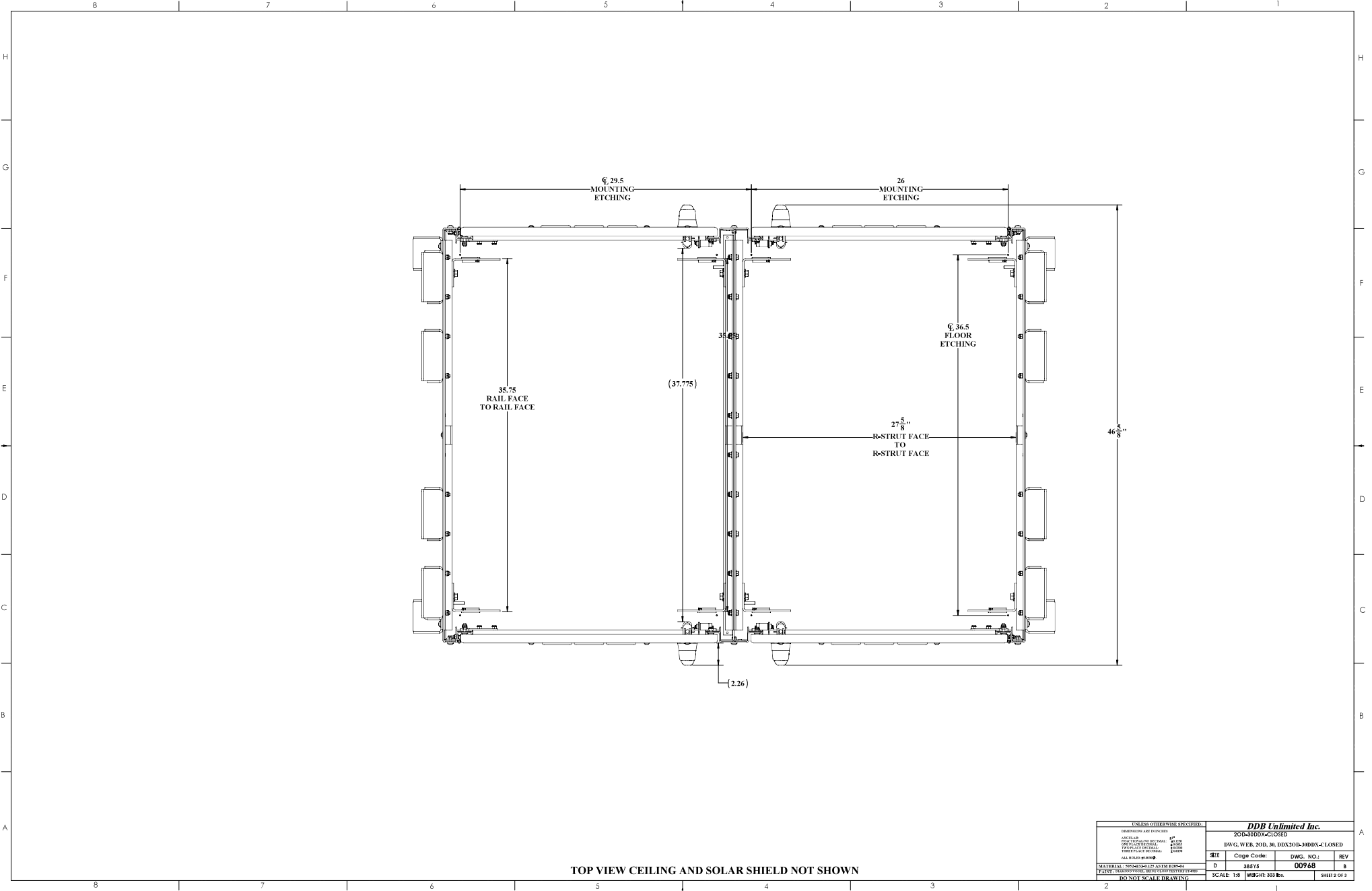


UNLESS OTHERWISE SPECIFIED:			
DIMENSIONS ARE IN INCHES	200-420DX		
WELDING TO BE PERFORMED	AS SHOWN		
DRILLING TO BE PERFORMED	AS SHOWN		
TYPICAL FINISH	AS SHOWN		
ALL DIMENSIONS	AS SHOWN		
MATERIAL SPECIFICATIONS TO BE USED	AS SHOWN		
PAINT TO BE USED	AS SHOWN		
DO NOT SCALE DRAWING			
DDB Unlimited Inc.			
DWG. NO. 100-62-DX200-420DX			
SHEET	Code Code:	DWG. NO.:	REV:
D	28515	00968	B
SCALE: 1:8		WEIGHT: 44 lbs.	SHEET 1 OF 3

UNCLASSIFIED PUBLIC

DDB FORM 7.1-2 REV A (08/02/17)

DDB FORM 7.1-2 REV. A 08/02/17

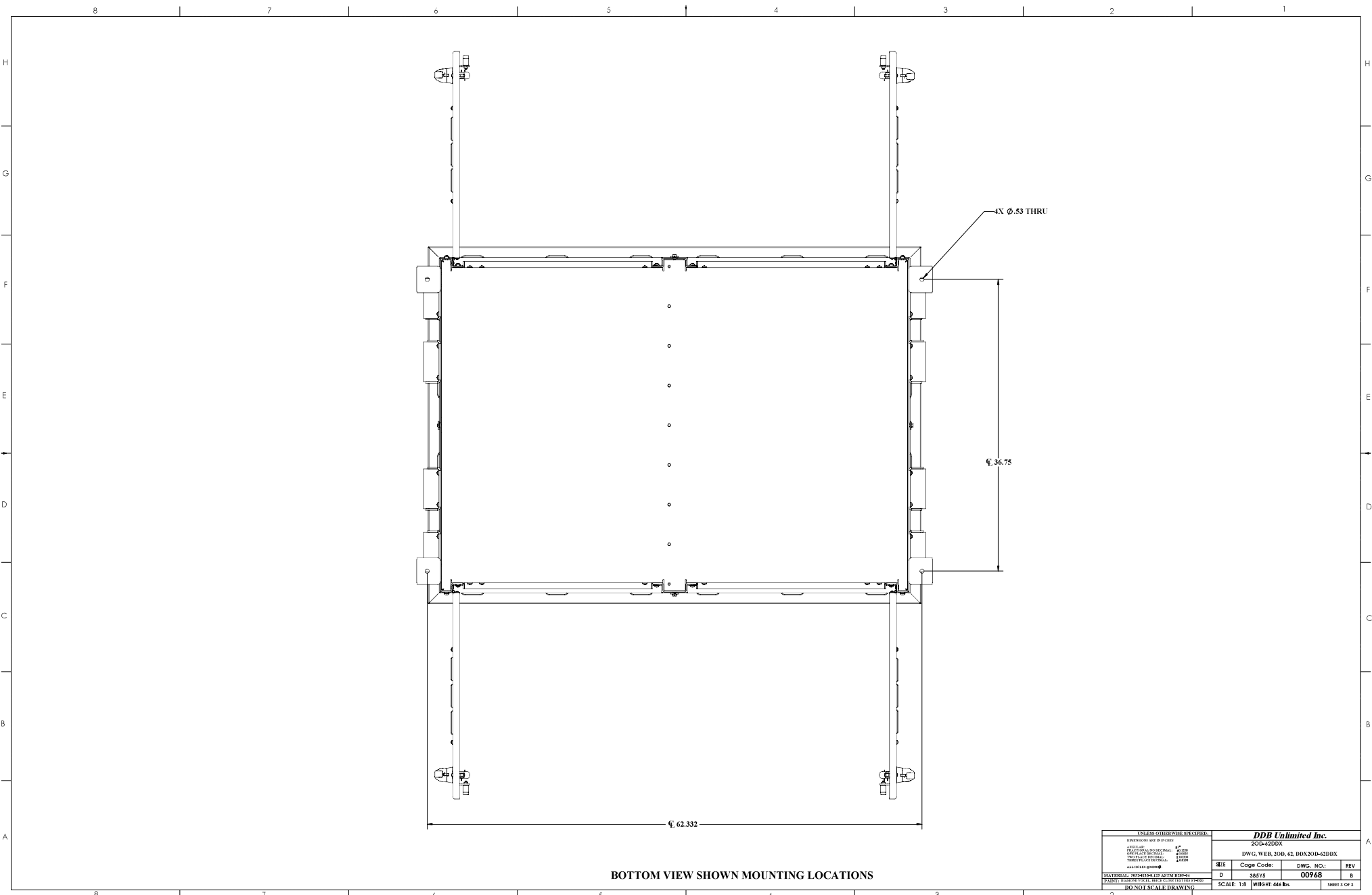


TOP VIEW CEILING AND SOLAR SHIELD NOT SHOWN

UNCLASSIFIED PUBLIC

UNLESS OTHERWISE SPECIFIED:			
DIMENSIONS ARE IN INCHES			
FINISH	FINISH	FINISH	FINISH
WALLS	CEILING	FLOOR	DOOR
PAINT	PAINT	PAINT	PAINT
DO NOT SCALE DRAWING			
DDB Unlimited Inc.			
204-300DX-CLOSED			
DWG. WEB 300_3M_DDA300-300DX-CLOSED			
REV	Code Code:	DWG. NO.:	REV
D	38515	00968	8
SCALE: 1:8		WEIGHT: 303 Lbs.	SHEET 2 OF 3

DDB FORM 7.1-2 REV. A 08/02/17



BOTTOM VIEW SHOWN MOUNTING LOCATIONS

UNCLASSIFIED PUBLIC

UNLESS OTHERWISE SPECIFIED:			
2024-12-20			
DESCRIPTION AND QUANTITY	UNIT		
QUANTITY	UNIT		
DESCRIPTION	UNIT		
QUANTITY	UNIT		
DESCRIPTION	UNIT		
QUANTITY	UNIT		
MATERIAL SPECIFICATIONS AND NOTES:			
PAINT: PRIMER/PURCHASER'S SPECIFICATION			
DO NOT SCALE DRAWING			
DDB Unlimited Inc.		DWG. NO.: 2024-12-20	
REV	Code Code:	DWG. NO.:	REV
D	28515	00968	8
SCALE: 1:8		WEIGHT: 44 lbs.	SHEET 2 OF 3