



An ISO 9001  
Certified company

# 20D Series

## 20D-78DDC

Made in America



Believing in American  
Craftsmanship



## Why Choose the OD Series?

When a single bay solution just isn't sufficient, the 20D series enclosures are ideal. Constructed of our own rugged Alumiflex®, it is noticeably lighter than steel yet strong enough to rack the heaviest equipment. The 20D-78DDC includes a number of standard features, such as an adjustable racking system with a versatile rail strut system (R-Strut), a 3-point locking system for security, a reversible rack system for 19" and 23" applications, lifting hooks for easy maneuvering into place, wind locks to secure doors safely when they are open, and our patented Alumishield® solar cap for managing heat loads. Furthermore, DDB offers an array of customizable choices, which include climate control (HVAC), electrical load panels, and cable entry solutions. These possibilities combine to produce an enclosure that can be customized to meet the specific needs that your site and clients may require. The 20D undoubtedly closes the gap between single-bay enclosures and larger building "hut" solutions, giving you the flexibility to meet any need in the field without the required stamps or inspections that traditional "huts" do. With an industry-leading 15-year warranty on every enclosure, DDB provides cutting-edge design, competitive pricing, benchmark lead times, and guaranteed delivery. Whether you require a custom enclosure or something from our substantial stock, our professional staff is here to help you today.

## Application Types

- Telecommunications
- Wireless/Broadband
- Fiber Optics
- Back Haul
- Public Safety
- Utility
- Base Station
- Military
- Trailer-Based Communications
- Wi-Fi
- LTEE/4G/5G



## Environmental & Safety Ratings:

- ✓ NEMA 3R (shown above)
- ✓ NEMA 4 and 4X configurable (not shown)



## Features

- 15 Year Warranty
- 0.125" Aluminum Construction
- 3 Point Lock System
- Heavy Duty Out-Door Construction
- Front and Rear Access
- Standard Lifting Hooks
- Stainless Steel External Hardware/Hinge
- Cream Powder-Coat, Standard
- Quick Shipping

## Weight and Dimensions

Approximate Exterior Enclosure Dimensions:

79"H x 65"W x 39"D

Shipping Dimensions:

84"L x 82"W x 54"D - Palletized

Approximate Shipping Weight:

565lbs.

2301 S. HWY 77 Pauls Valley, OK 73075

T: (405)-665-2876

[sales@ddbunlimited.com](mailto:sales@ddbunlimited.com) [www.ddbunlimited.com](http://www.ddbunlimited.com)

# 20D Series

## 20D-78DDC

Made in America



Believing in American  
Craftsmanship



### Features

1. Alumishield
2. 19" and 23" Adjustable Racking Rails
3. 3 Point Locking System
4. Stainless Steel Door Hinge
5. Powder-Coat Cream
6. Wind Lock
7. Rear Access Door
8. Reusable Filters
9. Heavy Duty 0.160" Doors



Scan this code for  
Climate Control



Scan this code for  
Accessories

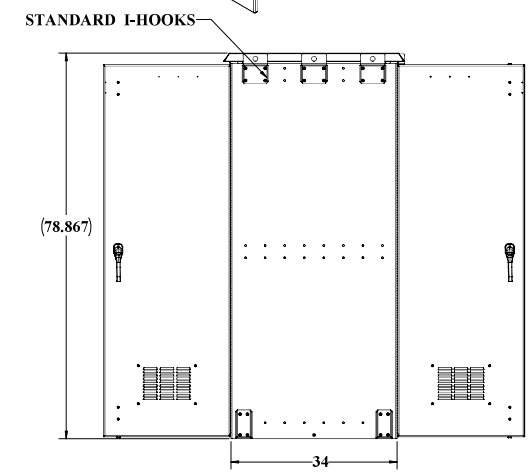
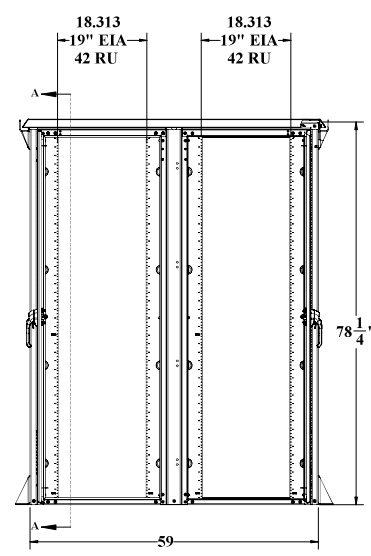
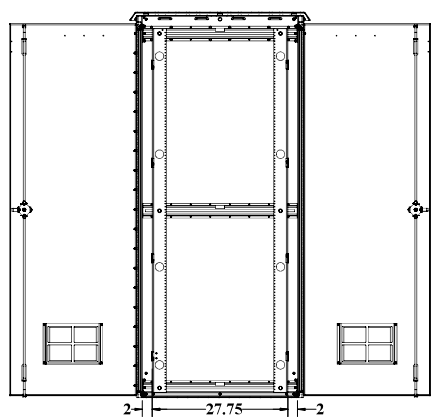
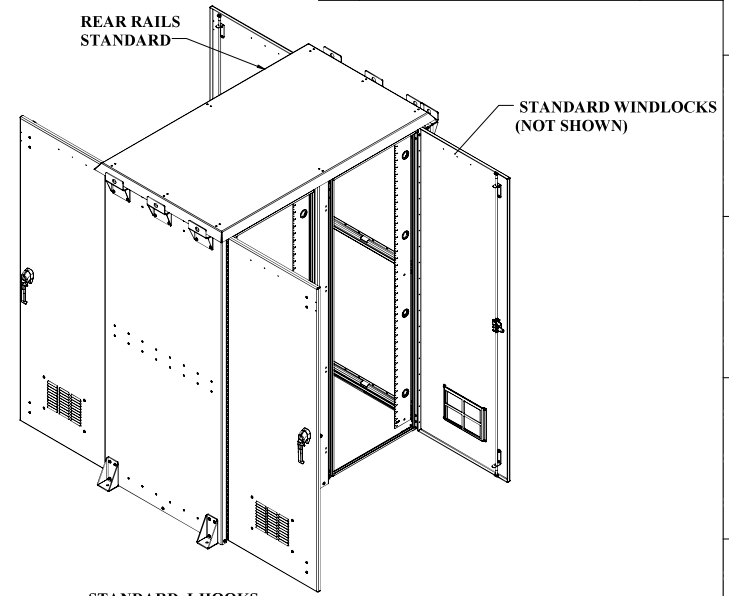
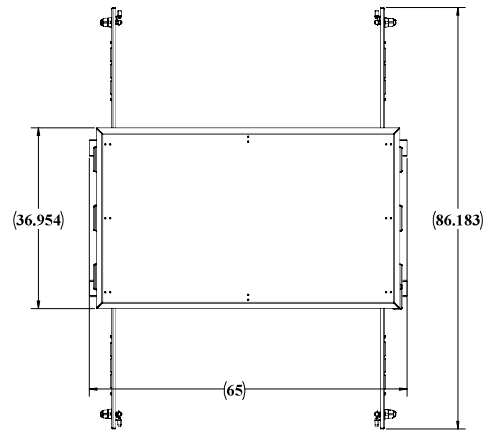


2301 S. HWY 77 Pauls Valley, OK 73075

T: (405)-665-2876

[sales@ddbunlimited.com](mailto:sales@ddbunlimited.com) [www.ddbunlimited.com](http://www.ddbunlimited.com)

REVISIONS		
REV.	DESCRIPTION	DATE
A	Initial Release per DR-00969	5/28/2014
B	UPDATED TO 2017 WEBSITE FORMAT	8/9/2017
C	UPDATED NEW FORMAT	11/25/2020



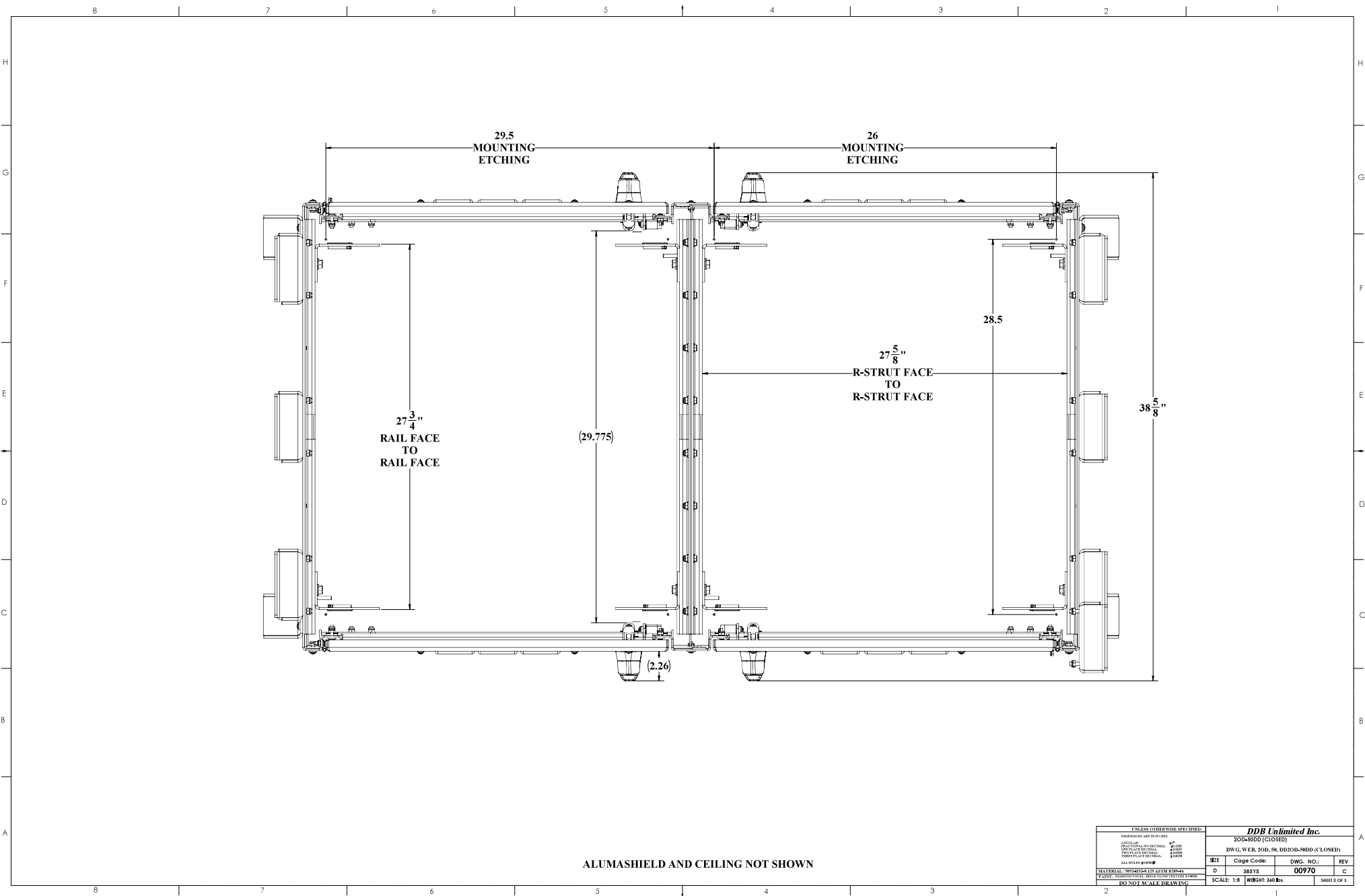
SECTION A-A  
SCALE 1:12

UNLESS OTHERWISE SPECIFIED:		
DIMENSIONS ARE IN INCHES		
ANGLE	90°	
DIAGONAL	AS SHOWN	
DRILL HOLE	AS SHOWN	
FINISH	AS SHOWN	
FASTENERS	AS SHOWN	
ALL DIMENSIONS	UNLESS OTHERWISE SPECIFIED	
MATERIALS	UNLESS OTHERWISE SPECIFIED	
PAINT	UNLESS OTHERWISE SPECIFIED	
DO NOT SCALE DRAWING		

<b>DDP Unlimited Inc.</b>			
200-7800			
DWG. WEB. 30B. 78. DB			
REV	Code Code:	DWG. NO.:	REV
D	38515	00970	C
SCALE: 1:8		WEIGHT: 474 lbs.	SHEET 1 OF 3

UNCLASSIFIED PUBLIC

DDJ8 FORM 7.1-2 REV. K (08/02/17)



ALUMASHIELD AND CEILING NOT SHOWN

UNCLASSIFIED PUBLIC

UNLESS OTHERWISE SPECIFIED:		DDJ8 Unlimited Inc.			
DIMENSIONS ARE IN INCHES		2004-8000 (CLOSED)			
DIMENSIONS ARE IN INCHES		DWG. WEB. 300. 56. DDJ800-8000 (CLOSED)			
DIMENSIONS ARE IN INCHES		REV	Code Code:	DWG. NO.:	REV
DIMENSIONS ARE IN INCHES		D	38515	00970	C
DIMENSIONS ARE IN INCHES		SCALE: 1:8		WEIGHT 340 Lbs.	
DIMENSIONS ARE IN INCHES		DO NOT SCALE DRAWING		SHEET 2 OF 3	

File Location: (DDJ8) (EPDM Vault)  
C:\DDJ8\DR Request\Customers\DDJ8 WEB DWO\300 Family WEB\DR-00970 (2004-8000 WEB

