



Why Choose the 20D Series?

When a single bay solution just isn't sufficient, the 20D series enclosures are ideal. Constructed of our own rugged Alumiflex®, it is noticeably lighter than steel yet strong enough to rack the heaviest equipment. The 20D-78DDXC includes a number of standard features, such as an adjustable racking system with a versatile rail strut system (R-Strut), a 3-point locking system for security, a reversible rack system for 19" and 23" applications, lifting hooks for easy maneuvering into place, wind locks to secure doors safely when they are open, and our patented Alumishield® solar cap for managing heat loads. Furthermore, DDB offers an array of customizable choices, which include climate control (HVAC), electrical load panels, and cable entry solutions. These possibilities combine to produce an enclosure that can be customized to meet the specific needs that your site and clients may require. The 20D undoubtedly closes the gap between single-bay enclosures and larger building "hut" solutions, giving you the flexibility to meet any need in the field without the required stamps or inspections that traditional "huts" do. With an industry-leading 15-year warranty on every enclosure, DDB provides cutting-edge design, competitive pricing, benchmark lead times, and guaranteed delivery. Whether you require a custom enclosure or something from our substantial stock, our professional staff is here to help you today.



Features

- 15 Year Warranty
- 0.125" Aluminum Construction
- 3 Point Lock System
- Heavy Duty Out-Door Construction
- Front and Rear Access
- Standard Lifting Hooks
- Stainless Steel External Hardware/Hinge
- Cream Powder-Coat, Standard
- Quick Shipping

Weight and Dimensions

- Approximate Exterior Enclosure Dimensions:
- 79"H x 65"W x 47"D
- Shipping Dimensions:
- 84"L X 82"W x 54D- Palletized
- Approximate Shipping Weight:
- 605 lbs.

Application Types

- Telecommunications
- Wireless/Broadband
 - Fiber Optics
 - Back Haul
- Public Safety
- Utility
- Base Station
- Military
- Trailer-Based Communications
 - Wi-Fi
 - LTEE/4G/5G



Environmental & Safety Ratings:

- ✓ NEMA 3R (shown above)
- ✓ NEMA 4 and 4X configurable (not shown)

2301 S. HWY 77 Pauls Valley, OK 73075
T: (405)-665-2876

20D Series

20D-78DDXC



Features

1. Alumishield
2. 19" and 23" Adjustable Racking Rails
3. 3 Point Locking System
4. Stainless Steel Door Hinge
5. Powder-Coat Cream
6. Wind Locks
7. Rear Access Door
8. Reusable Filters
9. Heavy Duty 0.160" Doors

2301 S. HWY 77 Pauls Valley, OK 73075

T: (405)-665-2876

sales@ddbunlimited.com www.ddbunlimited.com

Scan this code for
Climate Control



Scan this code for
Accessories



8

7

6

5

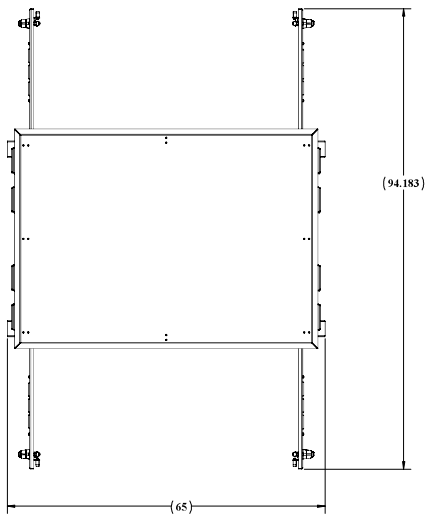
4

3

2

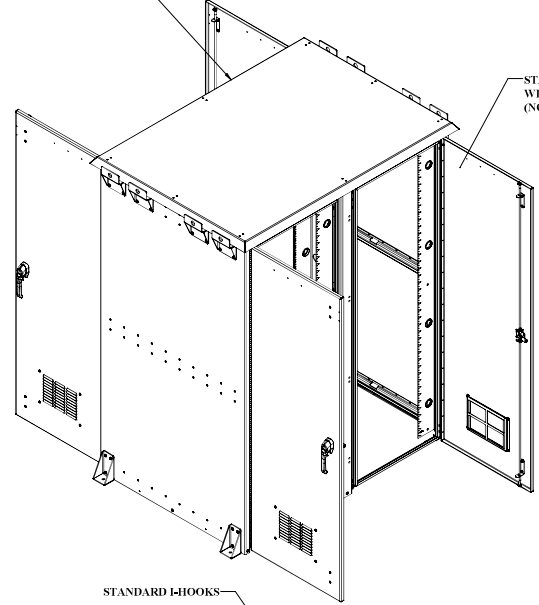
1

REVISIONS		
REV.	DESCRIPTION	DATE
A	Initial Release per DR-00971	5/28/2014
B	UPDATE TO NEW FORMAT	11/25/2020

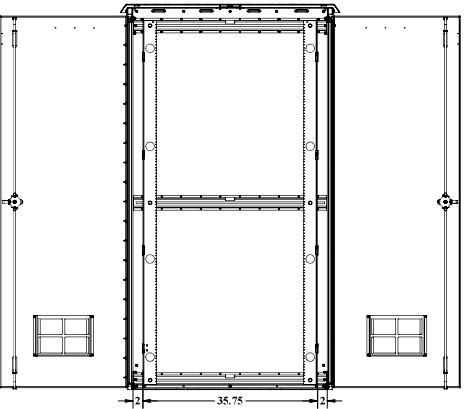


STANDARD REAR RAILS

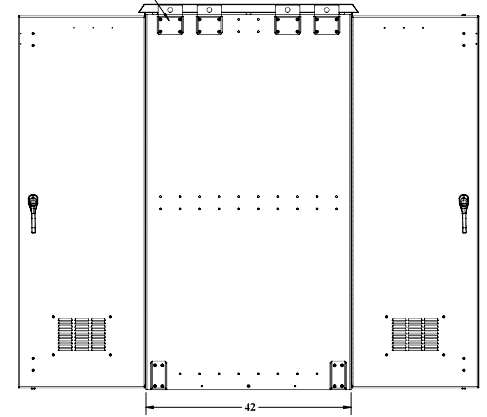
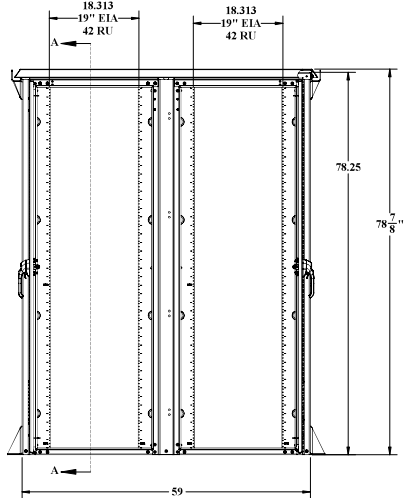
STANDARD WINDLOCKS (NOT SHOWN)



STANDARD I-HOOKS



SECTION A-A
SCALE 1:12



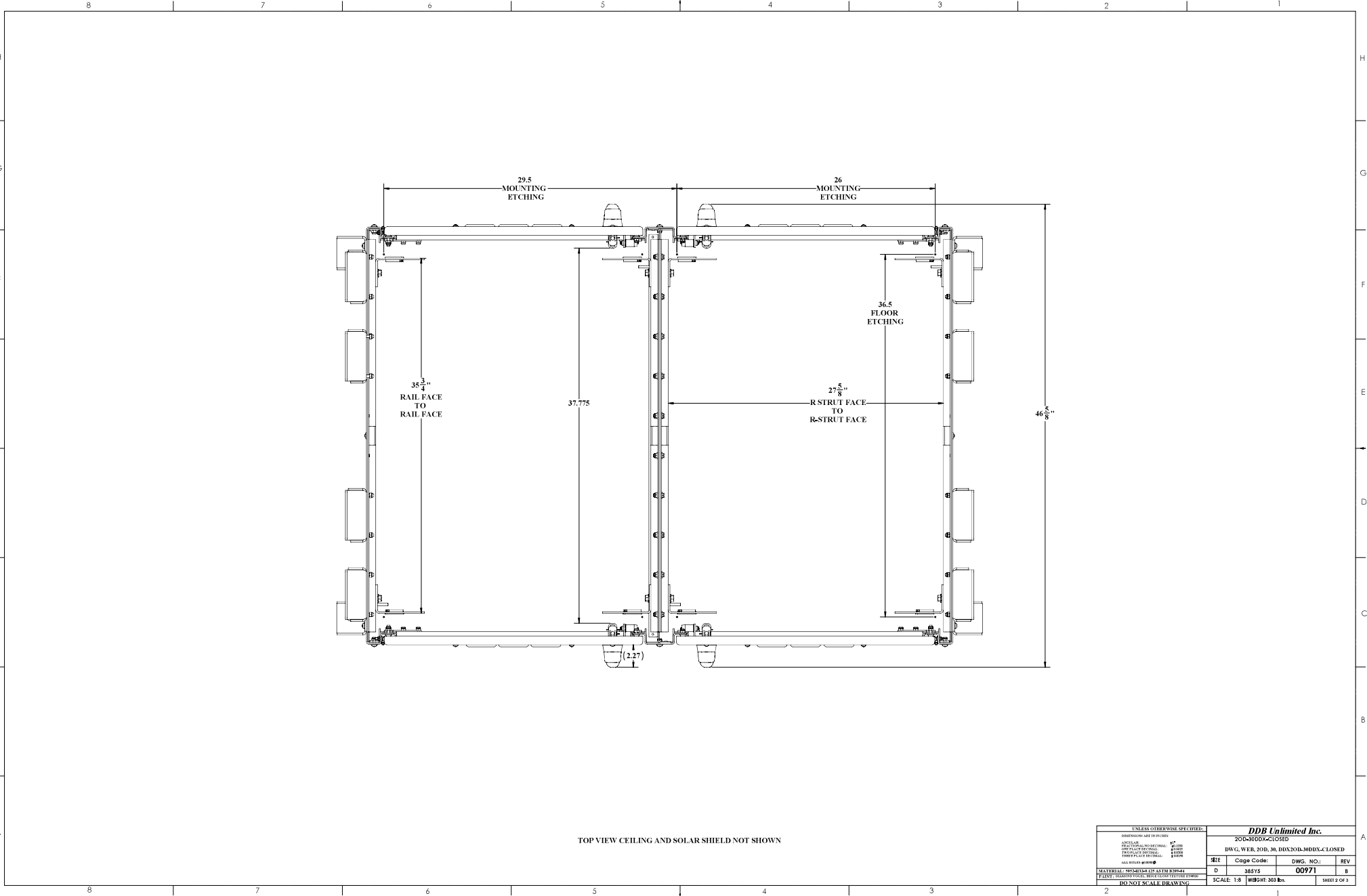
DDJ FORM 7-12 REV A 08/02/17

UNCLASSIFIED PUBLIC

UNLESS OTHERWISE SPECIFIED:			
DIMENSIONS ARE IN INCHES			
RESISTANCE TO PENETRATION	1000		
QUALITY CONTROL	100%		
DESIGN/CONSTRUCTION	100%		
ALL OTHERS	90%		
MATERIALS SPECIFIED BY ALPHA BITUMAS			
PAINT: BROWNSHIELD-BLUE/UNFINISHED			
NO NOT SCALE DRAWING			

DDJ Unlimited Inc. 203-780DX			
DWG. NO. WEB. 300. 78. BDX300L-78DX			
SHEET	Code Code:	DWG. NO.:	REV.
D	28515	00971	B
SCALE: 1:8		WEIGHT: 314 lbs.	SHEET 1 OF 3

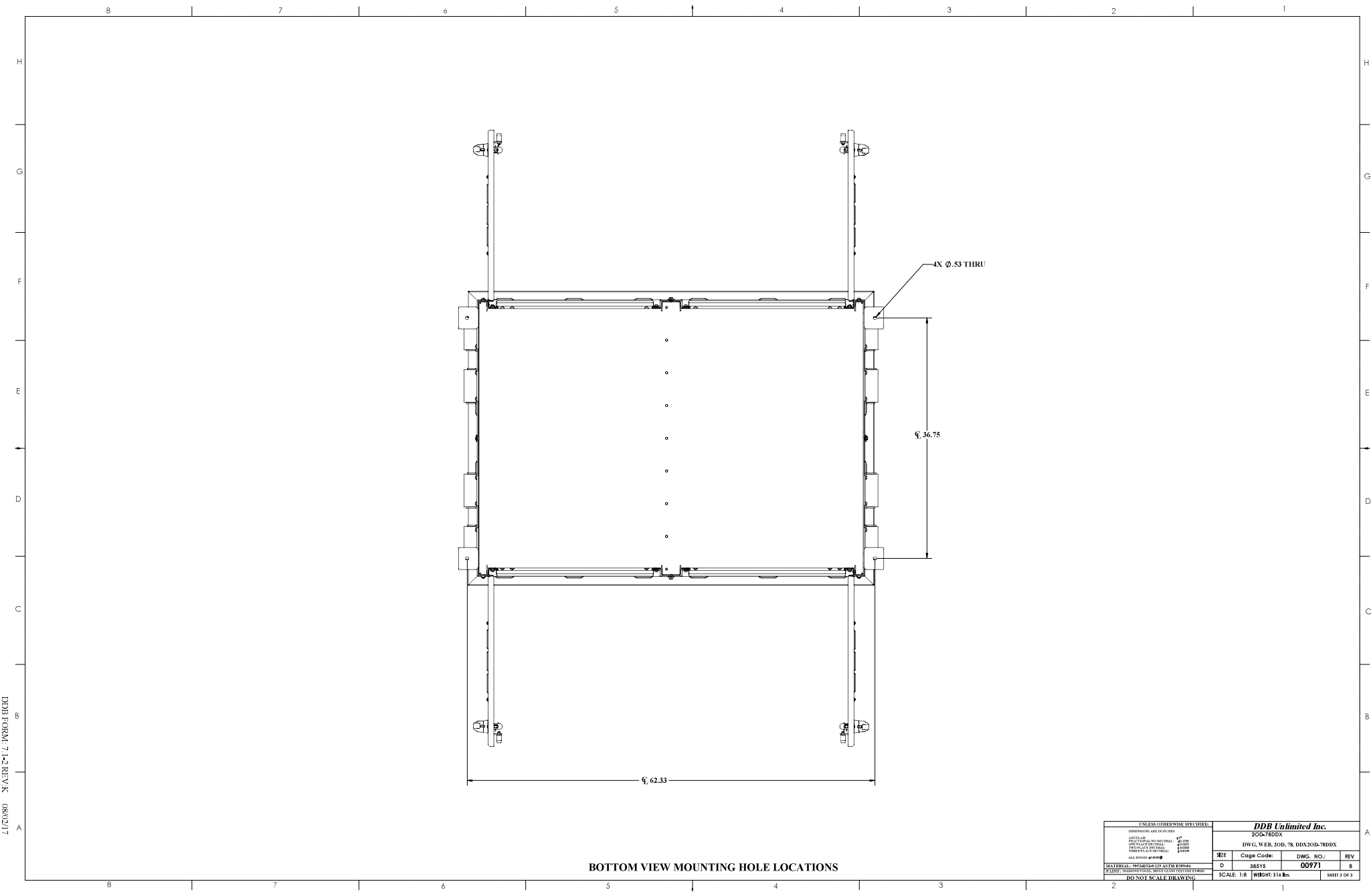
DDB FORM 7.1-2 REV. A (08/02/17)



TOP VIEW CEILING AND SOLAR SHIELD NOT SHOWN

UNCLASSIFIED PUBLIC

UNLESS OTHERWISE SPECIFIED:			
208-360DX-CLOSED			
DESCRIPTION SEE PARTS			
QUANTITY	PROFESSIONAL	1"	0000
DATE	PROFESSIONAL	1/1000	0000
DATE	PROFESSIONAL	1/1000	0000
DATE	PROFESSIONAL	1/1000	0000
ALL DIMENSIONS IN INCHES			
MATERIAL SPECIFIED BY ALTA BRYMAN			
PAINT DIMENSIONS AND DIMENSIONS IN INCHES			
DO NOT SCALE DRAWING			
DDB Unlimited Inc.			
DWG. WEB 308, 3M DDA308-308DX-CLOSED			
SHEET	Code Code:	DWG. NO.:	REV:
D	38515	00971	8
SCALE 1:8		WEIGHT 303 lbs.	SHEET 2 OF 3



BOTTOM VIEW MOUNTING HOLE LOCATIONS

UNCLASSIFIED PUBLIC

UNLESS OTHERWISE SPECIFIED:			
2025-780DX			
DESCRIPTION AND QUANTITY	UNIT		
QUANTITY	UNIT		
DESCRIPTION	UNIT		
QUANTITY	UNIT		
DESCRIPTION	UNIT		
QUANTITY	UNIT		
ALL DIMENSIONS ARE IN INCHES			
MATERIAL SPECIFICATIONS ARE TO BE DETERMINED BY THE BUYER			
PAINT: UNLESS OTHERWISE SPECIFIED, SEE DRAWING			
FINISH: UNLESS OTHERWISE SPECIFIED, SEE DRAWING			
DDB UNLIMITED INC.			
2025-780DX			
DWG. NO. WEB. 200. 78. BDX301B-780DX			
REV	Change Code:	DWG. NO.:	REV
D	28515	00971	8
SCALE: 1:8		WEIGHT: 314 lbs.	SHEET 2 OF 3

DDB FORM 7-1-2 REV A 08/02/17