

# UL-50 WOD SERIES

## WOD-16DXC-UL50



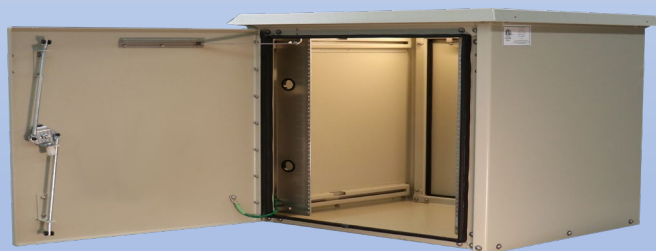
## Why Choose the WOD-UL Series?

The WOD-16DXC-UL50 enclosure is the pinnacle of enclosures. With a fully welded chassis, heavy duty vulcanized gasketing and years of design and engineering behind it, you will find this will meet the most stringent requirements of the UL-50E Type 4 listing. Fully tested by a third party Nationally Recognized Testing Laboratory and listed to the UL-50E standard, you can trust that the WOD UL series will pass any test or inspection it faces. Designed with public safety requirements in mind, these units can be placed in mission critical locations where communication or sensitive gear needs to be protected regardless of the situation. As with the standard WOD series, the WOD-UL series comes with standard 3-point locking, front and rear access with integrated wind locks, top mounted solar shield, adjustable R-strut racking, reversible 19" or 23" EIA racking, Alumiflex construction and our unmatched 15-year warranty. Moreover, there is an extensive list of optional accessories including HVAC units, electrical panels, and cable entry solutions to name a few. No matter the application, DDB provides cutting-edge design, competitive pricing, benchmark lead times, and guaranteed delivery. Whether you require a custom enclosure or something from our substantial stock, our professional staff is here to help you today.



## Application Types

- Telecommunications
- Wireless/Broadband
- Fiber Optics
- Back Haul
- Public Safety
- DAS
- Utility
- Base Station
- Military
- Trailer-Based Communications
- Wi-Fi
- LTEE/4G/5G



## Environmental & Safety Ratings:

- ✓ ETL environmentally listed to UL 50/50E, IP 66, Type 4
- ✓ ETL listed; Safety Requirements, UL 62368-1:2019 Ed.3, CSA C22.2

## Features

- 15 Year Warranty
- 0.125" Aluminum Construction
- 3-Point Locking System
- Heavy Duty Out-Door Construction
- Front and Rear Access
- Stainless Steel External Hardware/Hinge
- Cream Powder-Coat, Standard
- Wind Locks
- Quick Shipping

## Weight and Dimensions

Approximate Exterior Enclosure Dimensions:

18"H x 33"W x 30"D

Shipping Dimensions:

42"L x 32"W x 26"H- Palletized

Approximate Shipping Weight:

120 lbs.

2301 S. HWY 77 Pauls Valley, OK 73075

T: (405)-665-2876

[sales@ddbunlimited.com](mailto:sales@ddbunlimited.com) [www.ddbunlimited.com](http://www.ddbunlimited.com)

# UL-50 WOD SERIES

## WOD-16DXC-UL50

Made in America  
Believing in American  
Craftsmanship

### Features

1. Alumishield
2. Wind Locks
3. 19" and 23" Adjustable Racking Rails
4. Stainless Steel Door Hinge
5. 3-Point Locking System
6. Heavy Duty 0.160" Doors
7. Powder-Coat Cream
8. Rear Door Access

Scan this code for  
Climate ControlScan this code for  
Accessories

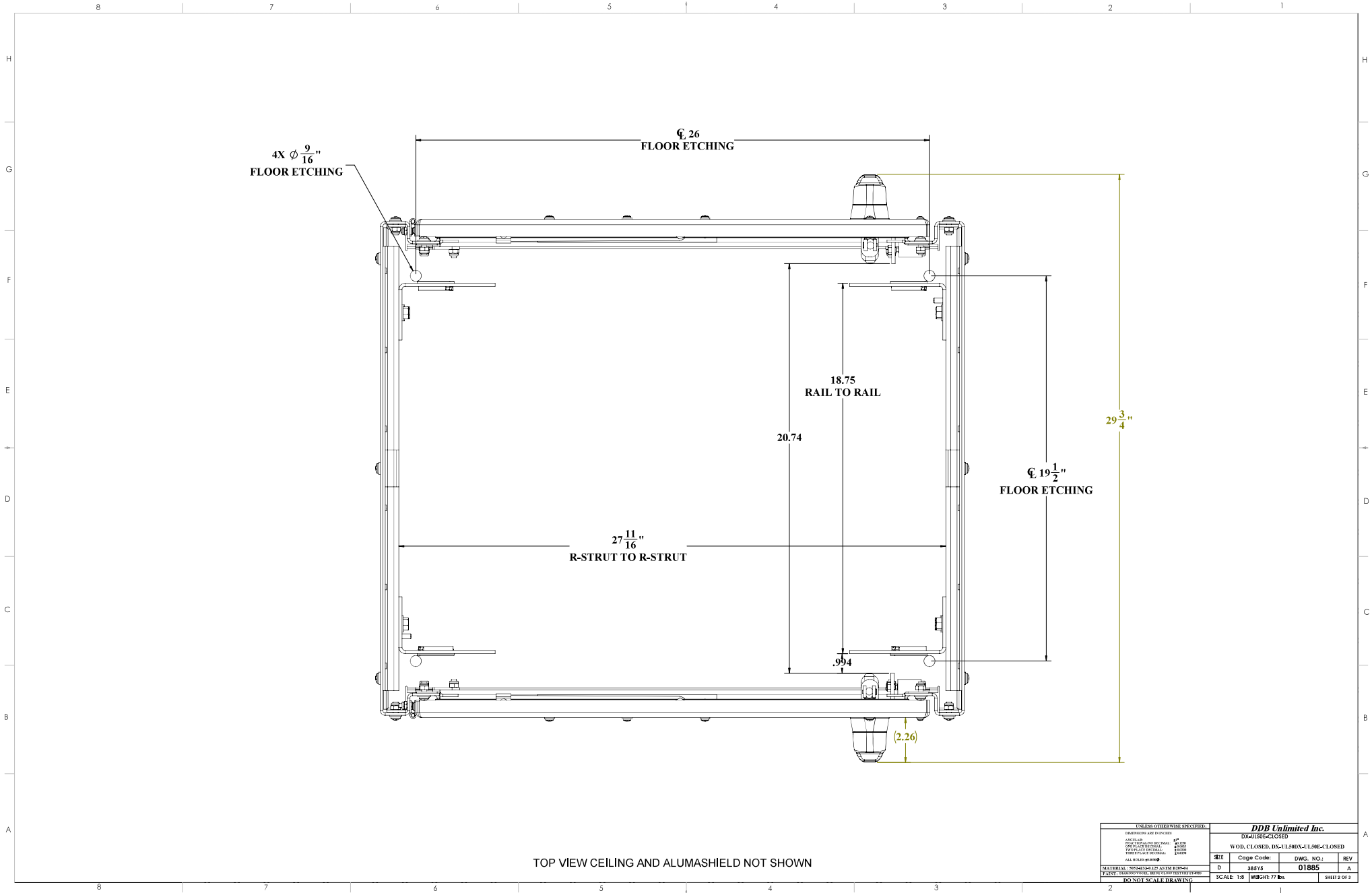
2301 S. HWY 77 Pauls Valley, OK 73075

T: (405)-665-2876

[sales@ddbunlimited.com](mailto:sales@ddbunlimited.com) [www.ddbunlimited.com](http://www.ddbunlimited.com)



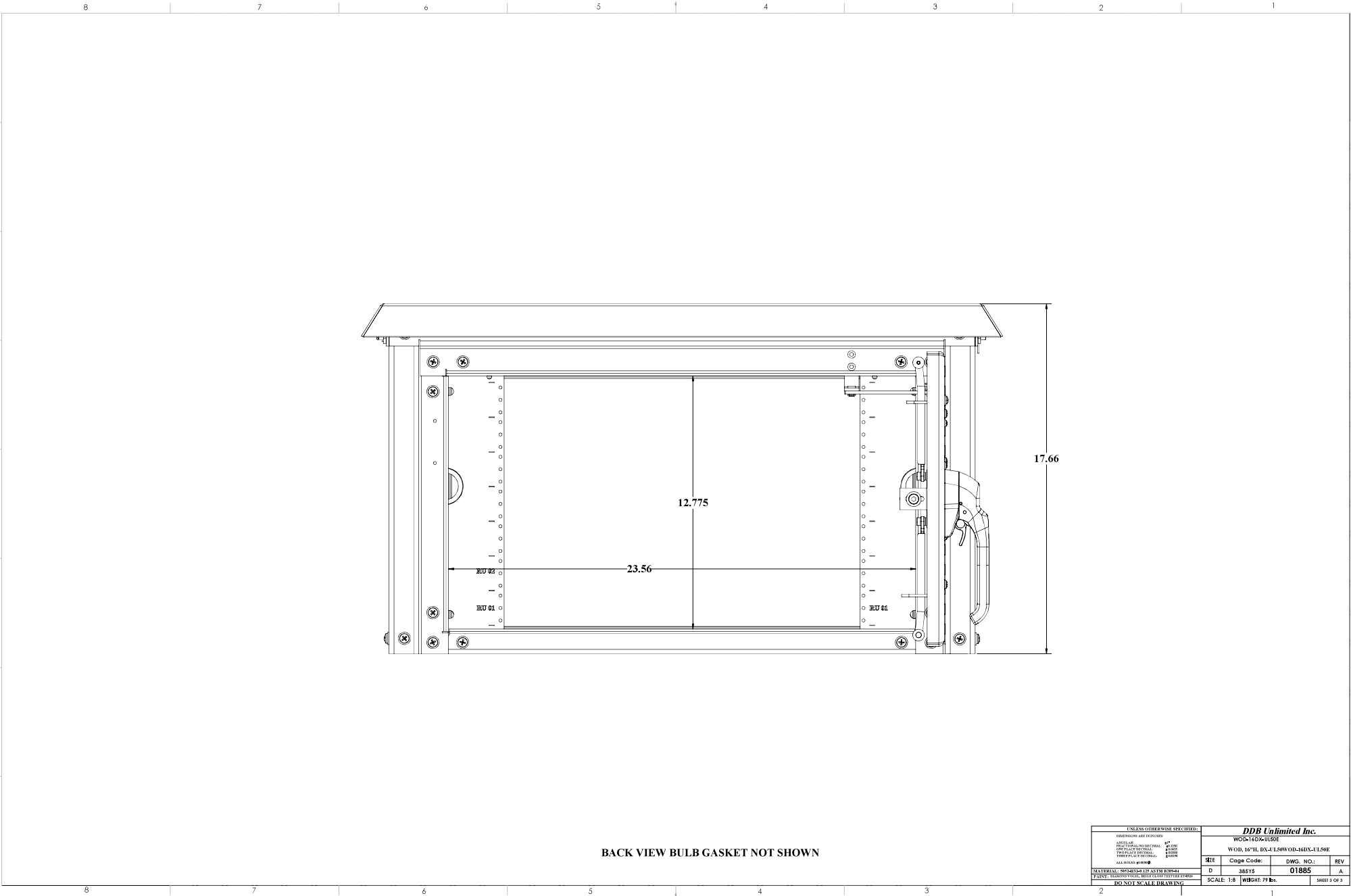
DDB FORM: 7.1.2 REV. A 08/02/17



UNCLASSIFIED PUBLIC

UNLESS OTHERWISE SPECIFIED:		DDB Unlimited Inc.			
DIMENSIONS ARE IN INCHES		DIA-UNLESS-CLOSED			
HOLE DIA.		WOB, CLOSED, DIA-ELIMINATE-UNLESS-CLOSED			
HOLE DIA. (HOLE DIA.)		REV	Code Code:	DWG. NO.:	REV
HOLE DIA. (HOLE DIA.)		D	28515	01885	A
HOLE DIA. (HOLE DIA.)		SCALE: 1:8		WEIGHT 77 lbs.	
HOLE DIA. (HOLE DIA.)		DO NOT SCALE DRAWING		SHEET 2 OF 3	

File Location: [DDB] (PDM Vault)  
C:\DDB\DR Request\Customer\DDB WEB DWG\WOD Family\_IL50 WEB\WOD-16D\JUL50 WEB\



BACK VIEW BULB GASKET NOT SHOWN

UNCLASSIFIED PUBLIC

UNLESS OTHERWISE SPECIFIED:		DDB Unlimited Inc.			
DIMENSIONS ARE IN INCHES		WOD-160X-UL50E			
ASSEMBLY		WOD-167H-DX-UL50WYOD-160X-UL50E			
DRAWING NO. SPECIAL		REV	Code Code:	DWG. NO.:	REV
DRAWING NO. STANDARD		D	28515	01885	A
DRAWING NO. TYPICAL		SCALE: 1:8			
DRAWING NO. TYPICAL		WEIGHT 79 lbs.			
MATERIAL: ALUMINUM EXTRUSION		SHEET 2 OF 3			
PAINT: POWDER COAT, RAL 9005 (BLACK)					
DO NOT SCALE DRAWING					