



An ISO 9001  
Certified company

# UL-50 WOD SERIES

## WOD-50DXC-UL50

Made in America



Believing in American  
Craftsmanship



## Why Choose the WOD-UL Series?

The WOD-50DXC-UL50 enclosure is the pinnacle of enclosures. With a fully welded chassis, heavy duty vulcanized gasketing and years of design and engineering behind it, you will find this will meet the most stringent requirements of the UL-50E Type 4 listing. Fully tested by a third party Nationally Recognized Testing Laboratory and listed to the UL-50E standard, you can trust that the WOD UL series will pass any test or inspection it faces. Designed with public safety requirements in mind, these units can be placed in mission critical locations where communication or sensitive gear needs to be protected regardless of the situation. As with the standard WOD series, the WOD-UL series comes with standard 3-point locking, front and rear access with integrated wind locks, top mounted solar shield, adjustable R-strut racking, reversible 19" or 23" EIA racking, Alumiflex construction and our unmatched 15-year warranty. Moreover, there is an extensive list of optional accessories including HVAC units, electrical panels, and cable entry solutions to name a few. No matter the application, DDB provides cutting-edge design, competitive pricing, benchmark lead times, and guaranteed delivery. Whether you require a custom enclosure or something from our substantial stock, our professional staff is here to help you today.

## Application Types

- Telecommunications
- Wireless/Broadband
- Fiber Optics
- Back Haul
- Public Safety
- DAS
- Utility
- Base Station
- Military
- Trailer-Based Communications
- Wi-Fi
- LTE/4G/5G



## Environmental & Safety Ratings:

- ✓ ETL environmentally listed to UL 50/50E, IP 66, Type 4
- ✓ ETL listed; Safety Requirements, UL 62368-1:2019 Ed.3, CSA C22.2



## Features

- 15 Year Warranty
- 0.125" Aluminum Construction
- 3-Point Locking System
- Heavy Duty Out-Door Construction
- Front and Rear Access
- Stainless Steel External Hardware/Hinge
- Cream Powder-Coat, Standard
- Wind Locks
- Quick Shipping

## Weight and Dimensions

Approximate Exterior Enclosure Dimensions:

51"H x 33"W x 30"D

Shipping Dimensions:

42"L x 32"W x 62"H- Palletized

Approximate Shipping Weight:

174 lbs.

2301 S. HWY 77 Pauls Valley, OK 73075

T: (405)-665-2876

[sales@ddbunlimited.com](mailto:sales@ddbunlimited.com) [www.ddbunlimited.com](http://www.ddbunlimited.com)

# UL-50 WOD SERIES

## WOD-50DXC-UL50

Made in America



Believing in American  
Craftsmanship



### Features

1. Alumishield
2. Wind Locks
3. 19" and 23" Adjustable Racking Rails
4. Stainless Steel Door Hinge
5. 3-Point Locking System
6. Heavy Duty 0.160" Doors
7. Powder-Coat Cream
8. Rear Door Access

Scan this code for  
Climate Control



Scan this code for  
Accessories

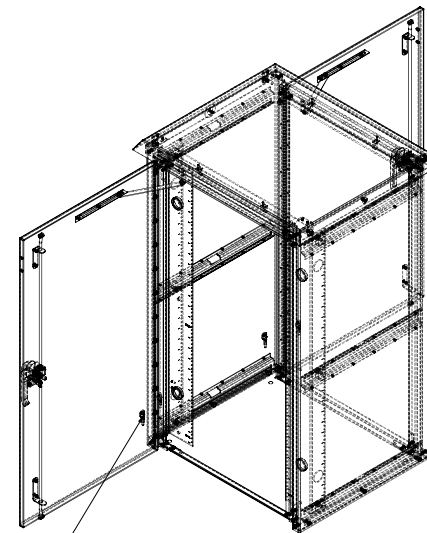
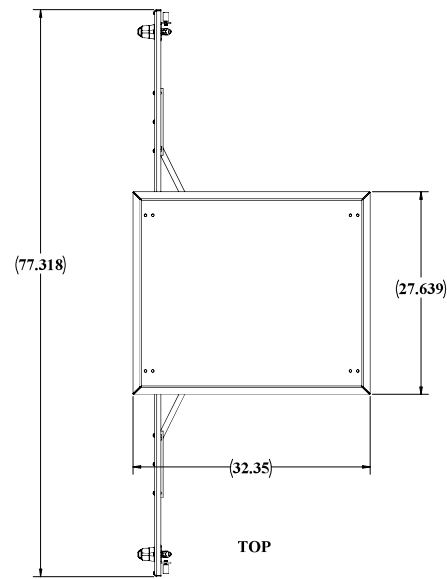


2301 S. HWY 77 Pauls Valley, OK 73075

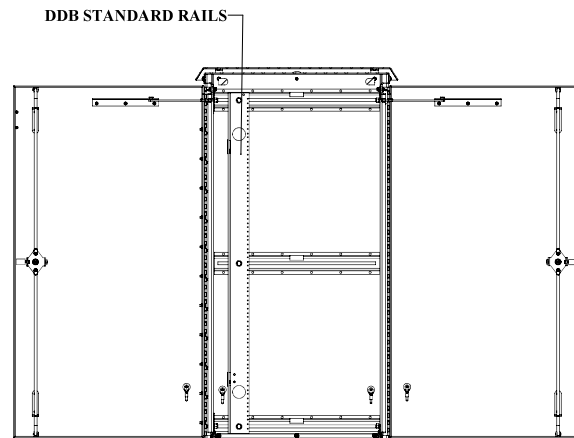
T: (405)-665-2876

[sales@ddbunlimited.com](mailto:sales@ddbunlimited.com) [www.ddbunlimited.com](http://www.ddbunlimited.com)

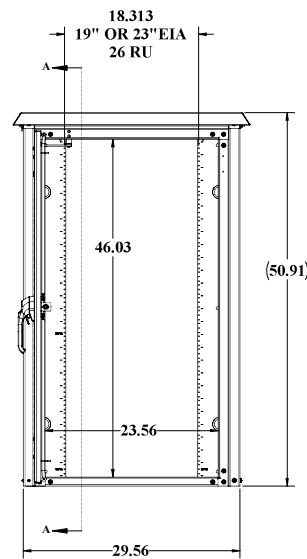
REVISIONS		
REV.	DESCRIPTION	DATE
A	CREATED DRAWING PER DR-02055	7/16/2019



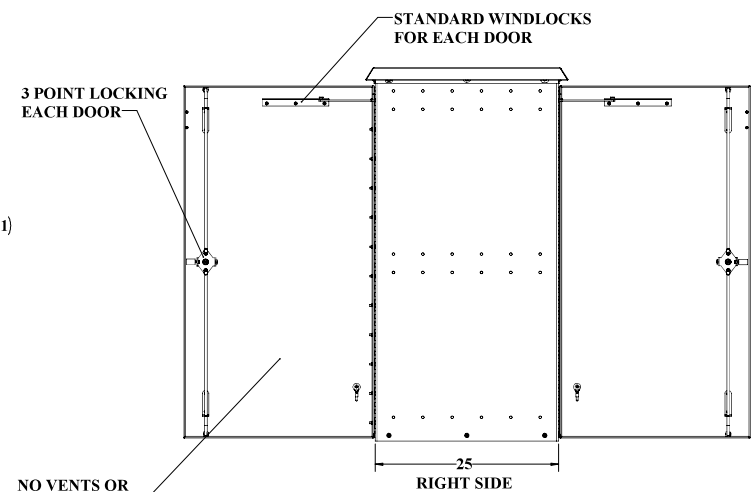
## GROUNDING STUDS



SECTION A-A  
SCALE 1 : 8



**FRONT**



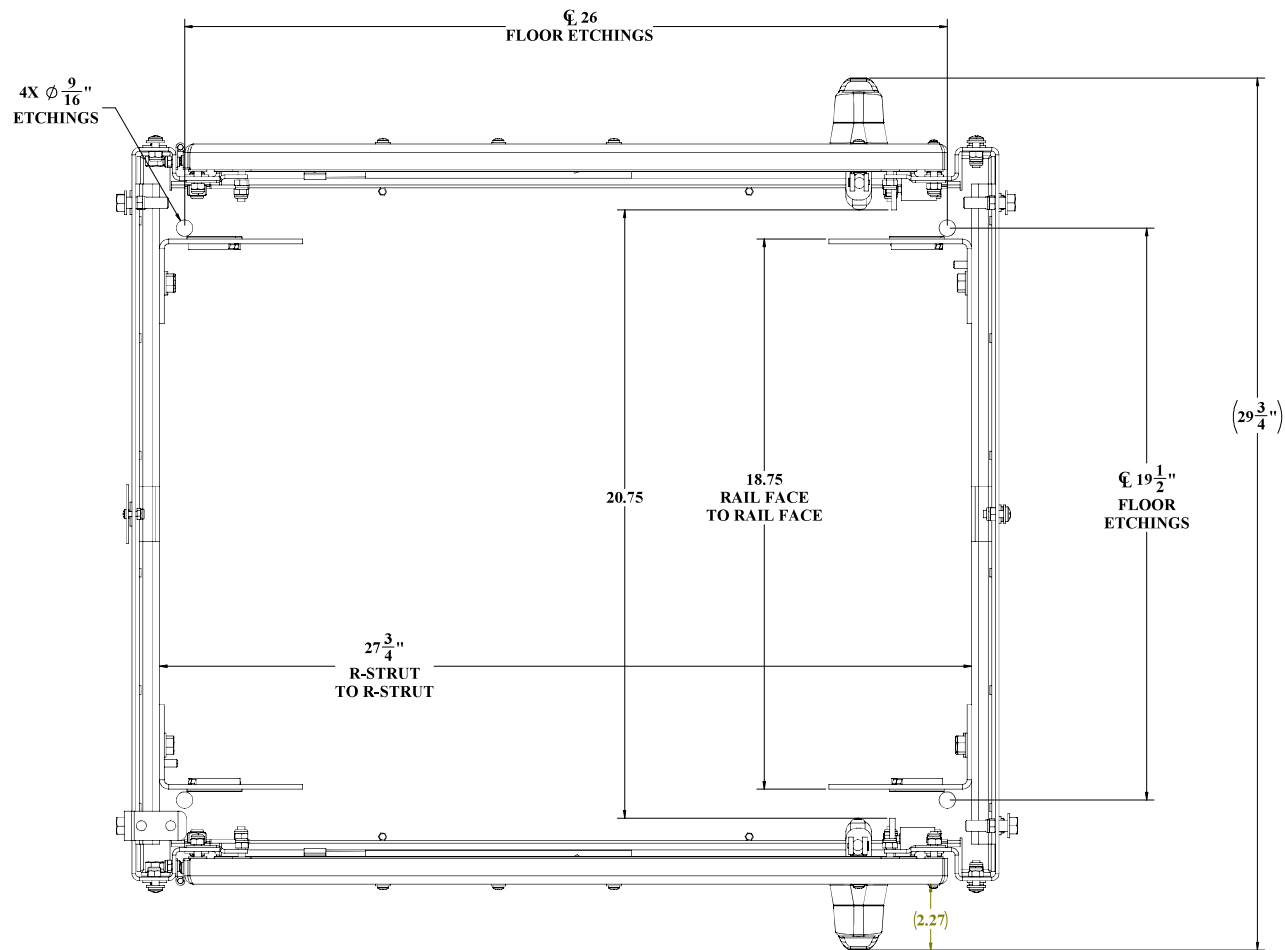
**NO VENTS OR LOUVERS**——

[illegible]

UNCLASSIFIED PUBLIC

File Location: (DD8) (EPDM Vault:)  
C:\DD8\DR Requests\Customers\DD8 WEB DWG\WOD Family\UL50 WEB\WOD-50DX-UL50 WEB\

WEB DRAWING (NOT FOR FABRICATION)



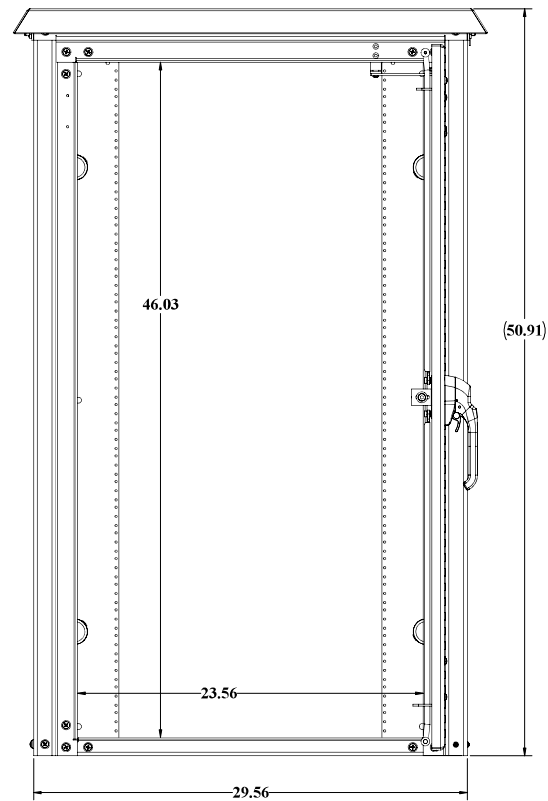
TOP VIEW  
NO CEILING OR ALUMASHIELD SHOWN

WEB DRAWING (NOT FOR FABRICATION)

UNLESS OTHERWISE SPECIFIED:			
DIMENSIONS ARE IN INCHES			
ANGULAR	1"		
PERFORATION (HORIZONTAL)	1/8"		
OR (VERTICAL)	1/16"		
PERFORATION (HORIZONTAL)	1/32"		
PERFORATION (VERTICAL)	1/64"		
THREE PLACE DECIMAL	1/1000"		
ALL BOLTS 304SS			
MATERIAL: 304SS 1/2" ASTM B264			
FINISH: POLISHED			
TOLERANCE: DIMENSIONS: ±.005, HOLE PLACES: ±.010			
DO NOT SCALE DRAWING			

DDB Unlimited Inc.			
DX-UL50E-CLOSED			
WOD, CLOSED, DX-UL50DX-UL50E-CLOSED			
REV	Cage Code:	DWG. NO.:	REV
D	38575	02055	A
SCALE: 1:12		WEIGHT: 77 lbs.	SHEET 2 OF 3

**WEB DRAWING (NOT FOR FABRICATION)**



**BACK VIEW  
GASKET NOT SHOWN**

**WEB DRAWING (NOT FOR FABRICATION)**

UNLESS OTHERWISE SPECIFIED:		<b>DDB Unlimited Inc.</b>	
DIMENSIONS ARE IN INCHES		WOD-50D-X-UL50E	
ANGLE: A	1" ±	WOD-50D-X-UL50E	
FACE TOTAL: NO. 30 CM MAX	0.0005		
OD: PLACE 20 CM MAX	0.0005		
FACE 10 CM MAX	0.0005		
FACE 10 CM MAX	0.0005		
ALL DIMENSIONS ARE IN INCHES	0.0005		
MATERIAL: 60534136-125 AST B3094		SIZE	REV
PLANT: CHANDLER TONAL, BATH, COLOR: WHITE		Cage Code:	DWG. NO.:
PART: 100554136-125 AST B3094		D	02055
		Scale: 1:12	Weight: 143 lbs.
		SHEET 3 OF 3	

UNCLASSIFIED PUBLIC