

SOD Series

SOD-102420

Why Choose the SOD Series?

The SOD-102420 enclosure is a top choice for outdoor equipment racking, offering unparalleled versatility. Constructed with our Alumiflex® material, it is notably lighter than steel yet strong enough to easily rack the heaviest equipment. The SOD series boasts easy installation for pad, pole, and wall mounting options allowing these boxes to install in any environment for any application. With standard features like a pad locking system, a venting system with a reusable filter, and a built-in solar cap to manage heat loads, the value quickly adds up. Adding to the flexibility, the SOD series is configurable to be used for indoor and outdoor applications and has an extensive list of available options, including climate controls, and electrical and cable entry solutions. All of this comes with the industry's best lead times, unmatched warranty, and competitive pricing. As expected, the DDB SOD series sets the mark as a design leader that is versatile and scalable to meet a wide array of situations. Contact our knowledgeable sales team for more information.



Features

- 15 Year Warranty
- 0.125" Aluminum Construction
- Pad Locking System
- Front Door Access
- Heavy Duty Out-Door Construction
- Stainless Steel External Hardware/Hinge
- Cream Powder-Coat, Standard
- Flexible and Scalable
- Quick Shipping

Weight and Dimensions

- Approximate Exterior Enclosure
- Dimensions:
- 12"H x 24"W x 24"D
- Shipping Dimensions:
- 30"L x 30"W x 16"H - Boxed
- Approximate Shipping Weight:
- 50 lbs.

Application Types

- Telecommunications
- Wireless/Broadband
- Fiber Optics
- Back Haul
- Small Cell/DAS
- Utility
- Base Station
- Military
- Trailer-Based Communications
- Wi-Fi
- LTEE/4G/5G

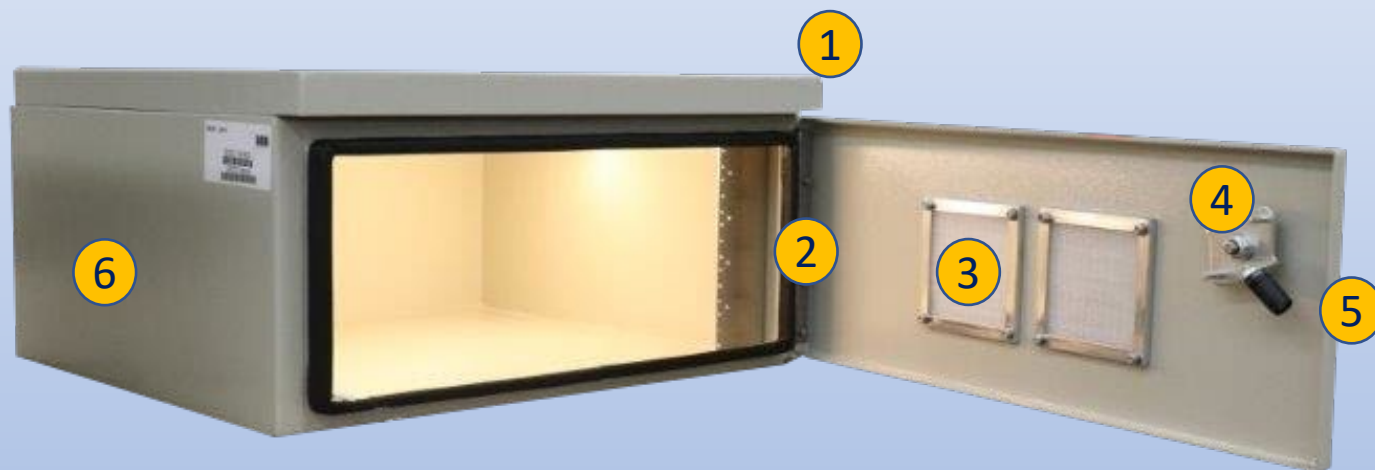


Environmental & Safety Ratings:

- ✓ NEMA 3R as shown; NEMA 4 and 4X configurable
(unlisted to environmental rating)
- ✓ UL listed 50/50E Available (not shown)

SOD Series

SOD-102420



Features

1. Solar Cap
2. Stainless Steel Door Hinge
3. Reusable Vent Filters
4. Pad Locking System
5. 0.125" Aluminum Construction
6. Powder-Coat Cream

Scan this code for
Accessories

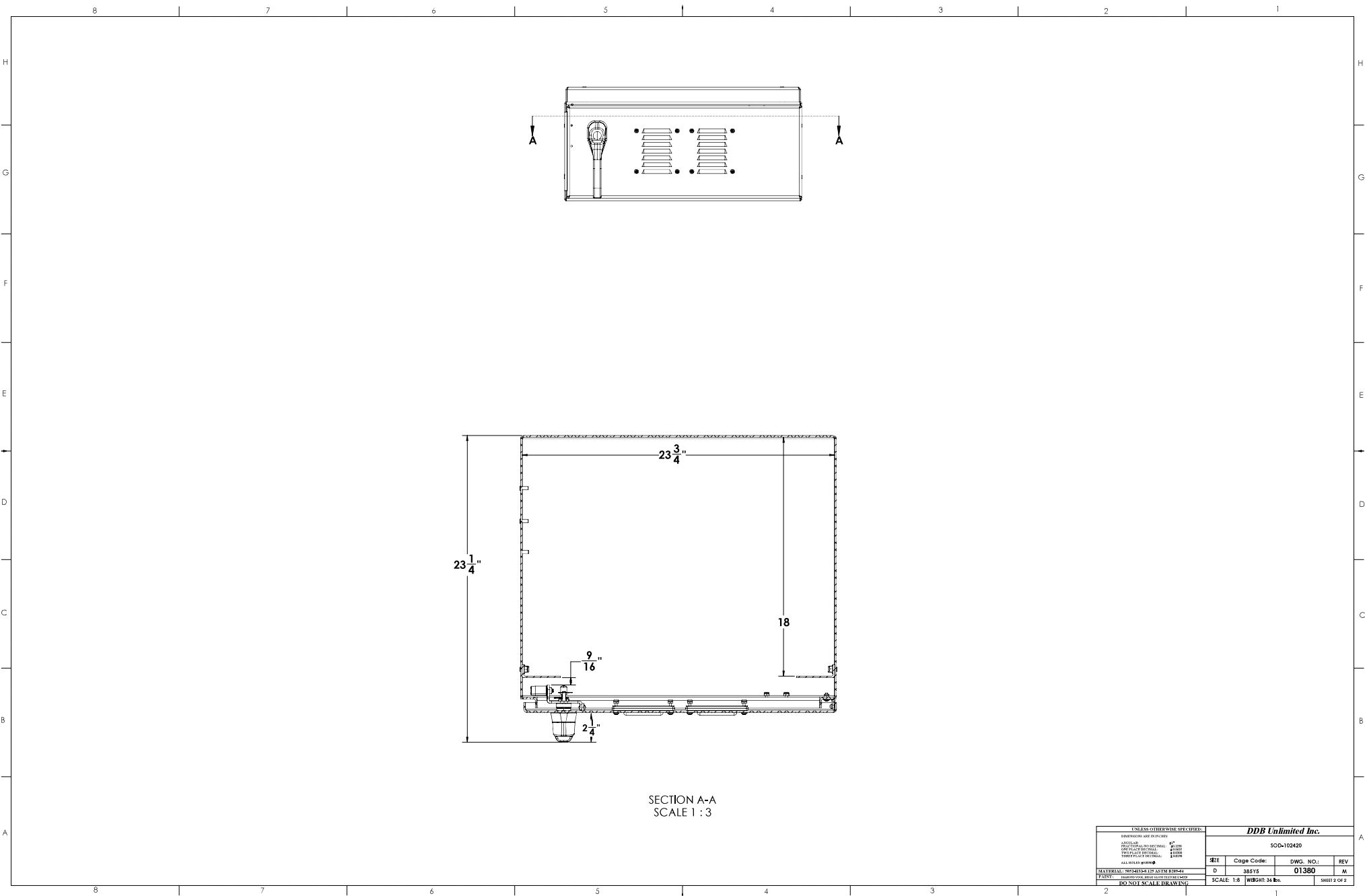


2301 S. HWY 77 Pauls Valley, OK 73075

T: (405)-665-2876

sales@ddbunlimited.com www.ddbunlimited.com

DDB FORM 7.1-2 REV AK 08/02/17



UNCLASSIFIED PUBLIC
THE INFORMATION CONTAINED IN THIS DRAWING IS THE SOLE PROPERTY OF DDB Unlimited, INC. ANY
REPRODUCTION IN PART OR AS A WHOLE WITHOUT THE WRITTEN PERMISSION OF DDB Unlimited, INC. IS PROHIBITED.

UNLESS OTHERWISE SPECIFIED:				DDB Unlimited Inc.			
DIMENSIONS ARE IN INCHES				SOD-102420			
ANGLE	90°	180°	270°	DATE	CODE	NO.	REV
ANGLE	90°	180°	270°	D	01380		IM
ANGLE	90°	180°	270°	SCALE	1:8	WEIGHT 34 lbs.	SHEET 2 OF 2
MATERIALS: UNLESS OTHERWISE SPECIFIED				DO NOT SCALE DRAWING			

File Location: (DDB) (PDM Vault)
C:\DDB\DR Requests\Customers\DDB WEB DW\35013-XXXX\10D-102420