



Why Choose the OD Series?

The OD series of enclosures are the ultimate choice for your outdoor racking requirements. Being made of our own rugged Alumiflex®, you'll find it noticeably lighter than steel, yet strong enough to rack even the heaviest equipment. When choosing the OD series, you have handpicked the highest value in American construction. The OD-16DDC includes the standard features you have come to expect with DDB, incorporating the versatile rail strut (R-Strut) system for adjustable racking, the security of a 3- point locking system and our patented Alumishield® solar cap to manage heat loads. For those who need more than just our standard enclosure, DDB can also make a truly customized solution with our many available options including HVAC, providing a climate-controlled environment for any electronic equipment, electrical load center panels and cable entry solutions to name a few. All of this comes together to create an enclosure able to meet all of the unique need's customers have been seeking. DDB offers a state-of-the-art design, a competitive price, benchmark lead times and a guaranteed delivery, all backed up with an industry leading 15-year warranty on every enclosure. Put DDB's substantial stock to work for you today. Contact our professional staff to assist you with your made-to-order solution.

Application Types

- Telecommunications
- Wireless/Broadband
- Fiber Optics
- Back Haul
- Small Cell/DAS
- Public Safety
- Utility
- Base Station
- Military
- Trailer-Based Communications
- Wi-Fi
- LTEE/4G/5G



Environmental & Safety Ratings:

- ✓ NEMA 3R (shown above)
- ✓ NEMA 4 and 4X configurable (not shown)
- ✓ OD-16 Series, ETL environmentally listed to UL 50/50E, Type 4's
Available here: <https://www.ddbunlimited.com/new-ul-50e-listed/>
- ✓ ETL listed; Safety Requirements, UL 62368-1:2019 Ed.3, CSA C22.2



Features

- 0.125" Aluminum Construction
- Stainless Steel External Hardware/Hinge
- 3 Point Lock System
- Heavy Duty Out-Door Construction
- Front and Rear Access
- Custom Colors Available
- Cream Powder-Coat standard color
- Flexible and Scalable
- 15 Year Warranty
- Quick Shipping

Weight and Dimensions

Approximate Exterior Enclosure Dimensions:

18"H x 28"W x 39"D

Shipping Dimensions:

32"W x 42"L- Palletized

Approximate Shipping Weight:

124 lbs.

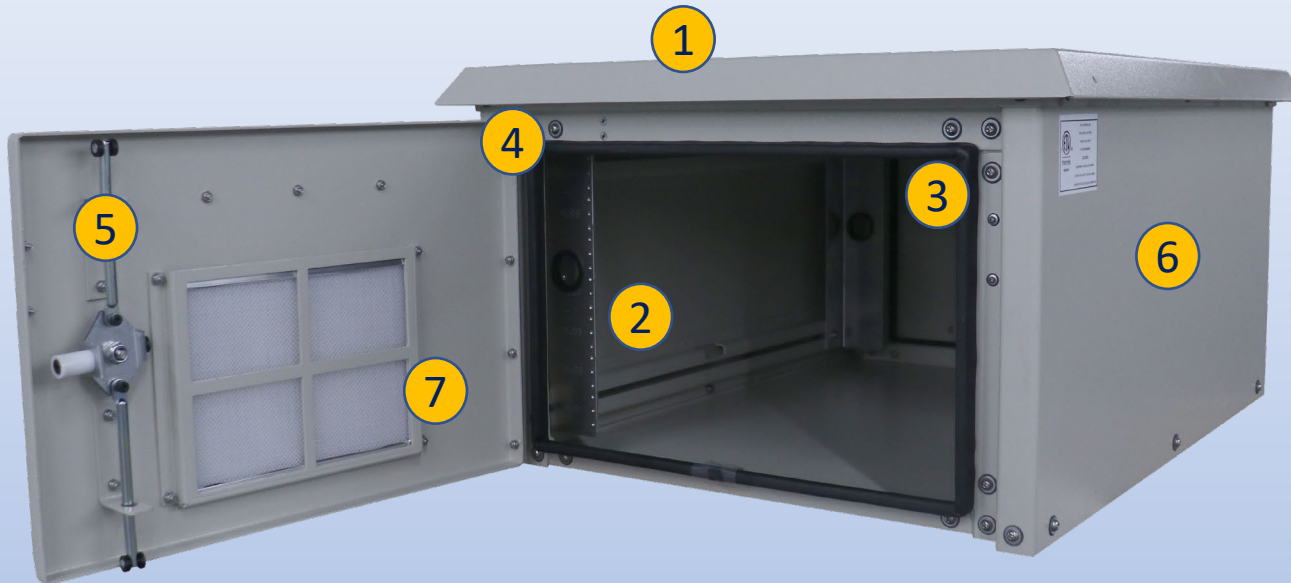
2301 S. HWY 77 Pauls Valley, OK 73075

T: (800) 753-8459 – F: (877) 220-7236

sales@ddbunlimited.com www.ddbunlimited.com

OD Series

OD-16DDC



Features

1. Alumishield
2. Front and Rear 19" Adjustable Racking Rails, 14 RU's
3. Rear Access Door
4. Stainless Steel Door Hinge
5. 3 Point Locking System
6. Powder coat cream
7. Reusable Vent Filters



Installation, operating and
safety instructions can be
downloaded here



Scan this code for
replacement parts



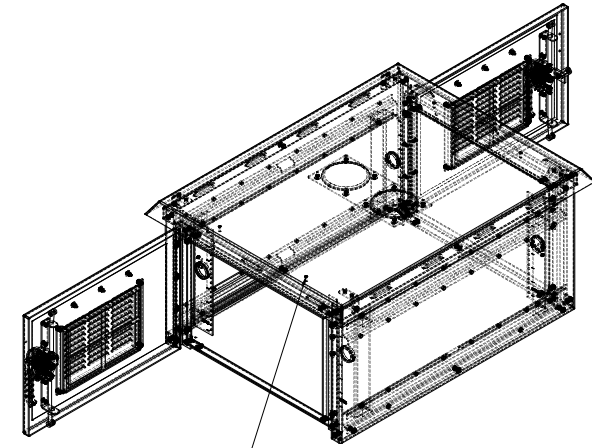
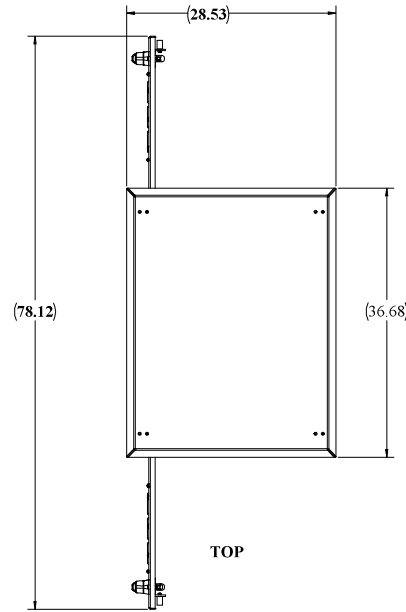
2301 S. HWY 77 Pauls Valley, OK 73075

T: (800) 753-8459 – F: (877) 220-7236

sales@ddbunlimited.com www.ddbunlimited.com

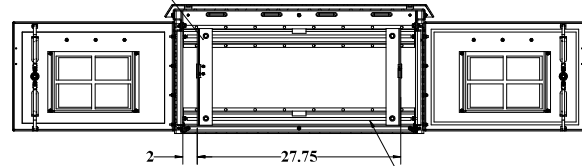
WEB DRAWING (NOT FOR FABRICATION)

REVISIONS		
REV.	DESCRIPTION	DATE
A	Web Drawing per DR-00420	11/14/2011
B	UPDATE TO REFLECT NEW COMPONENTS AND NEW DWG TEMPLATE	5/8/2014
C	UPDATED WITH 2019 FORMAT	2/11/2019
D	UPDATED DRAWING WITH DOOR RODS WITH ROLLERS PER DR-02252	3/26/2020



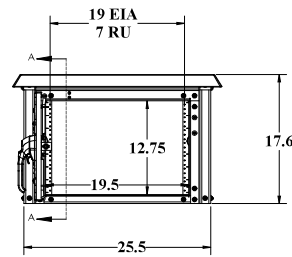
STANDOFFS STANDARD FOR OPTIONAL LIGHTING OVER EACH DOOR

FRONT AND REAR RAIL STANDARD ON DD



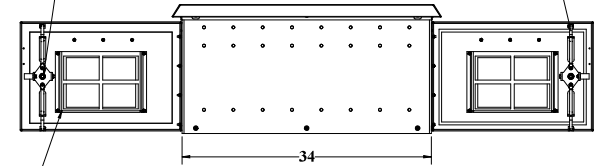
SECTION A-A
SCALE 1 : 8

R-STRUTS FOR RAIL ADJUSTMENTS



FRONT

3 POINT LOCKING EACH DOOR



RIGHT SIDE

DOOR RODS WITH ROLLERS

2 FILTERED VENTS

WEB DRAWING (NOT FOR FABRICATION)

UNLESS OTHERWISE SPECIFIED:		NAME	DATE	DDB Unlimited Inc.			
COMPONENTS AND PARTS	Model by:	0008	11/14/2011	OD Family Enclosures			
APPLICABLE STANDARDS	Drawn by:	Maxwell	02/23/19	Enclosure, OD, 16, DD			
DESIGN STANDARDS	Checked by:	01/03					
TEST STANDARDS	Sales Rep. by:	Boyc C	11/15/11	SHE	Cage Code:	DWG. NO.:	REV
ASSEMBLY STANDARDS	Q.A. Appr. by:	01/27/20		D	38515	00420	D
FINISH STANDARDS	Prod. Mgr. by:	01/27/20		SCALE: 1:32 WKT-RT: 84 Etc. SHEET 1 OF 3			
MATERIALS: www.ddb.com	DO NOT SCALE DRAWING						

UNCLASSIFIED PUBLIC

