



Why Choose the OD Series?

The OD series of enclosures are the ultimate choice for your outdoor racking requirements. Being made of our own rugged, Alumiflex®, you'll find it noticeably lighter than steel, yet strong enough to rack even the heaviest equipment. When choosing the OD series, you have handpicked the highest value in American construction. The OD-30DDC includes the standard features you have come to expect with DDB, incorporating the versatile rail strut (R-Strut) system for adjustable racking, the security of a 3- point locking system and our patented Alumishield® solar cap to manage heat loads. For those who need more than just our standard enclosure, DDB can also make a truly customized solution with our many available options including HVAC; providing a climate-controlled environment for any electronic equipment, electrical load panels and cable entry solutions to name a few. All of this comes together to create an enclosure able to meet all of the unique needs your customers have been seeking. DDB offers a state-of-the-art design, a competitive price, benchmark lead times and a guaranteed delivery, all backed up with an industry leading 15-year warranty on every enclosure. Put DDB's substantial stock to work for you today. Contact our professional staff to assist you with your made-to-order solution.

Application Types

- Telecommunications
- Wireless/Broadband
- Fiber Optics
- Back Haul
- Small Cell/DAS
- Public Safety
- Utility
- Base Station
- Military
- Trailer-Based Communications
- Wi-Fi
- LTEE/4G/5G



Environmental & Safety Ratings:

- ✓ NEMA 3R (shown above)
- ✓ NEMA 4 and 4X configurable (not shown)
- ✓ OD-30 Series, ETL environmentally listed to UL 50/50E, Type 4's
Available here: <https://www.ddbunlimited.com/new-ul-50e-listed/>
- ✓ ETL listed; Safety Requirements, UL 62368-1:2019 Ed.3, CSA C22.2

2301 S. HWY 77 Pauls Valley, OK 73075

T: (800) 753-8459 – F: (877) 220-7236

sales@ddbunlimited.com www.ddbunlimited.com



Features

- 0.125" Aluminum Construction
- Stainless Steel External Hardware/Hinge
- 3 Point Lock System
- Heavy Duty Out-Door Construction
- Front and Rear Access
- Custom Colors Available
- Cream Powder-Coat in Stock
- Flexible and Scalable
- 15 Year Warranty
- Quick Shipping

Weight and Dimensions

Approximate Exterior Enclosure Dimensions:

32"H x 28"W x 39"D

Shipping Dimensions:

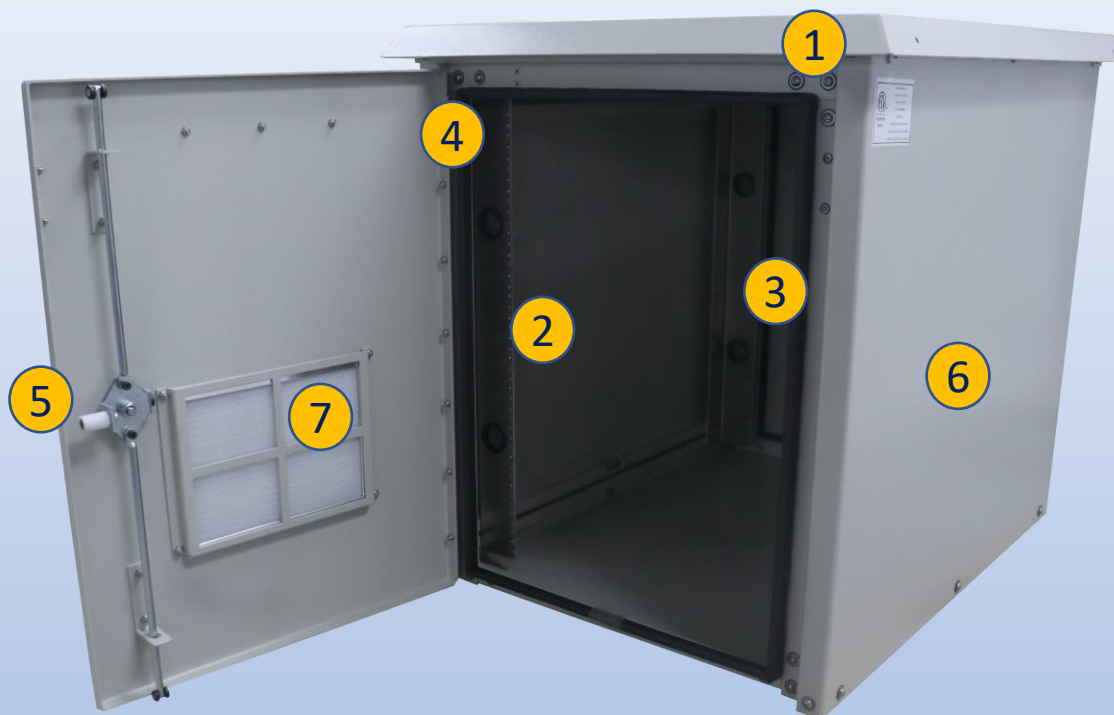
32"W x 42"L - Palletized

Approximate Shipping Weight:

150 lbs.

OD Series

OD-30DDC



Features

1. Alumishield
2. Front and Rear 19" Adjustable Racking Rails, 30 RU's
3. Rear Access Door
4. Stainless Steel Door Hinge
5. 3-Point Locking System
6. Powder coat, cream
7. Reusable Vent Filters



Installation, operating and
safety instructions can be
downloaded here



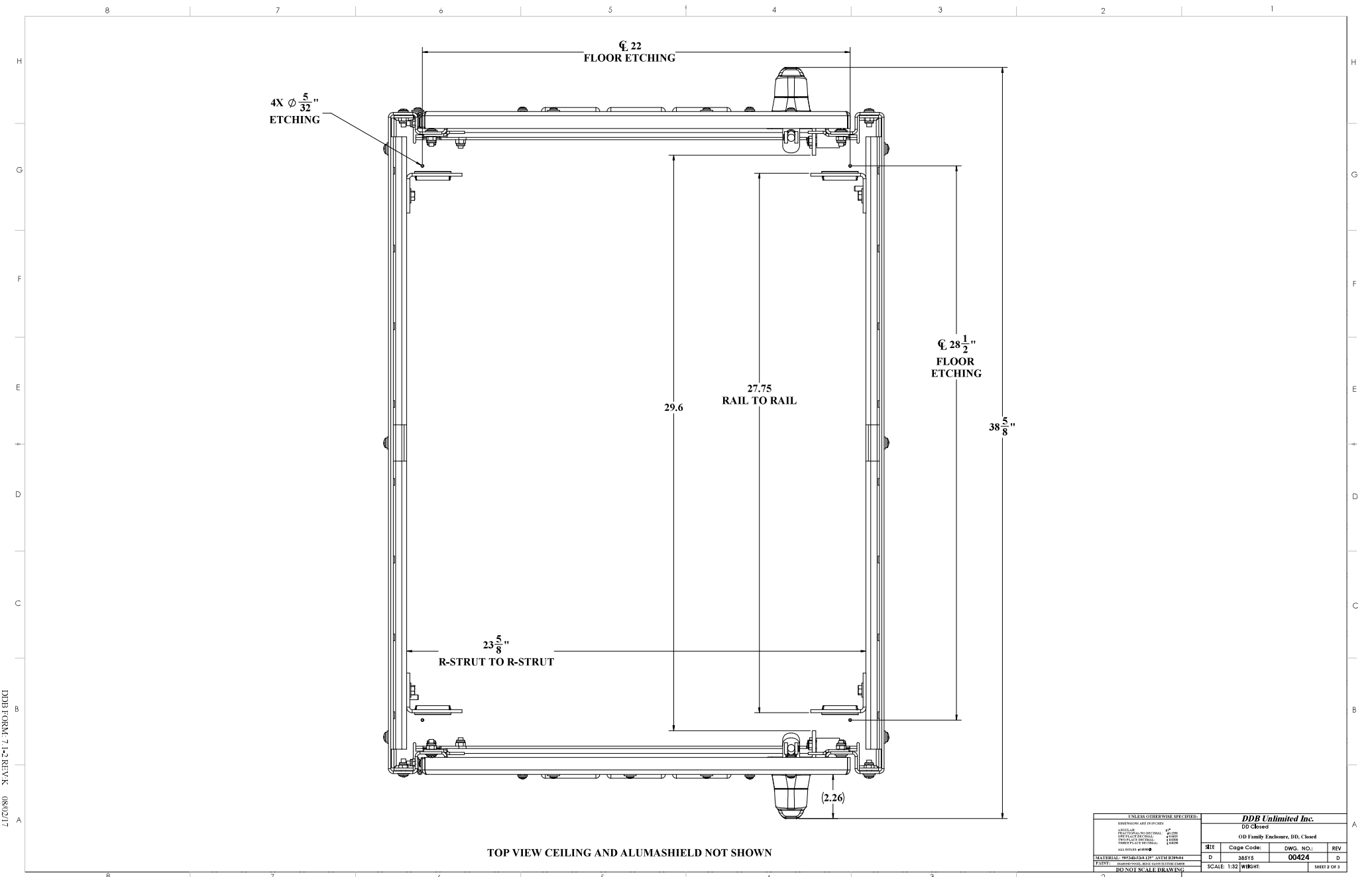
Scan this code for
replacement parts



2301 S. HWY 77 Pauls Valley, OK 73075

T: (800) 753-8459 – F: (877) 220-7236

sales@ddbunlimited.com www.ddbunlimited.com



DDB FORM 7.1-2 REV. A (08/02/17)

TOP VIEW CEILING AND ALUMASHIELD NOT SHOWN

UNCLASSIFIED PUBLIC
 THE INFORMATION CONTAINED IN THIS DRAWING IS THE SOLE PROPERTY OF DDB Unlimited, INC. ANY
 REPRODUCTION IN PART OR AS A WHOLE WITHOUT THE WRITTEN PERMISSION OF DDB Unlimited, INC. IS PROHIBITED.

<small>UNLESS OTHERWISE SPECIFIED:</small>			
DDB Unlimited Inc.			
DD Closed			
01 Family Entrance, DD, Closed			
<small>DIMENSIONS ARE IN INCHES</small>	<small>1\"/></small>	<small>NO. OF DIMENSIONS</small>	<small>REV</small>
<small>ASSEMBLY NO. SPECIAL</small>	<small>0100</small>	<small>NO. OF DIMENSIONS</small>	<small>00424</small>
<small>DESIGN NO. SPECIAL</small>	<small>1000</small>	<small>NO. OF DIMENSIONS</small>	<small>D</small>
<small>TRAVEL NO. SPECIAL</small>	<small>1000</small>	<small>NO. OF DIMENSIONS</small>	<small>D</small>
<small>DRW. NO. SPECIAL</small>	<small>1000</small>	<small>NO. OF DIMENSIONS</small>	<small>D</small>
<small>ALL DIMENSIONS ARE IN INCHES</small>		<small>NO. OF DIMENSIONS</small>	<small>D</small>
<small>MATERIAL SPECIFICATIONS ARE LISTED IN THE DRAWING</small>		<small>NO. OF DIMENSIONS</small>	<small>D</small>
<small>PAINT: UNPAINTED, SEE SPECIFICATIONS</small>		<small>NO. OF DIMENSIONS</small>	<small>D</small>
<small>DO NOT SCALE DRAWING</small>		<small>NO. OF DIMENSIONS</small>	<small>D</small>
<small>2</small>	<small>1:32</small>	<small>W/BHT</small>	<small>SHEET 2 OF 3</small>

